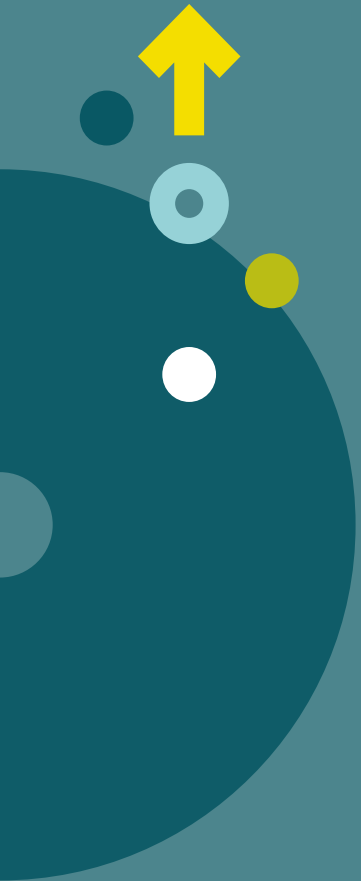




Together, we make it possible

2017 REPORT TO DONORS



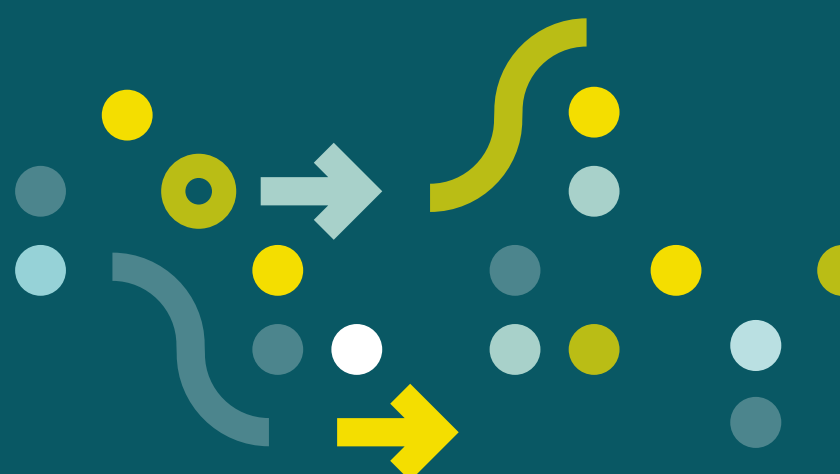
ON THE COVER
Ann and Mike Ciresi

See page 8



In this report

- 6 Letter from Linda Goldenberg, chair,
Abbott Northwestern Hospital Foundation Board of Directors
- 7 Board of Directors
- 9 Your contributions at work
- 10 2017 Highlights
- 12 Fifteen years of transformative giving
- 14 Medicine Ball
- 17 Honor Roll of Lifetime Contributors
- 18 Guarantors
- 28 President's Circle
- 30 Founders' Society
- 32 Statistical resume
- 34 Financial statements
- 35 Abbott Northwestern Hospital
Foundation staff





Together, we make it possible

At Abbott Northwestern Hospital and throughout Allina Health, we're here to help the people we serve do more, feel stronger and live better than they ever thought possible.

Doing so requires us to work as a team to best support people and their goals, and donors like you are an integral part of our team. Like our dedicated caregivers, providers, technicians and support staff, donors help us build on our strengths and pioneer new approaches that lead to better treatments for our patients. They help us take care of the little things that really matter when a person is most vulnerable. They help us change lives.

As the donor stories in this annual report illustrate, philanthropy helps us expand on what's possible. Multiply these stories by each of our donors, and you'll understand why we are immensely grateful for your support. You are making a difference for those we serve.





Dear Friends,

2017 was marked by incredible accomplishments, and all of them have one common thread: you. Together, with your support, we raised more than \$9 million for patients, research and care at Abbott Northwestern Hospital.

Your partnership with the Abbott Northwestern Hospital Foundation helps us support all the dimensions of health: mind, body, spirit and community. It allows us to be forward-thinking in delivering care, pursuing research, and nurturing the calling and shared purpose of our employees and Medical Staff. Each and every gift is meaningful and essential to our continued ability to serve our community. **Thank you.**

In the following pages you'll meet donors who are inspired by the hospital's mission. I'm proud to introduce them to you and to highlight key activities for the Foundation in 2017, touch on what the Foundation has accomplished over its 15-year history, and share some of the ways donor support helps Abbott Northwestern advance care.

On behalf of the Abbott Northwestern Hospital Foundation Board of Directors, the hospital's Medical Staff and leadership, and the patients, families and communities we serve, thank you.

Please enjoy reading about all that your contributions make possible.

Sincerely,

Linda Goldenberg
Chair, Abbott Northwestern Hospital Foundation Board

Board of Directors

2017-2018

Officers

Linda Goldenberg, chair

Kit Dahl, vice chair

Rob Sit, vice chair

Trisha Blake, secretary

Kita McVay, treasurer

Directors

Lee Arostegui, MD

Roger H. D. Lacey

Conley Brooks, Jr.

Tamera Lillemoe, MD

Cassie Burns

Ted Loftness, MD

Barbara Burwell

Donald MacMillan

Cari Erickson

Muffy MacMillan

Thom Gunderson

Lynne McDonough

Sharon Hawkins

Jason Paulnock

Carol Huttner

Ron Poole

Ben Jaffray

Robert Scott, MD

Mumtaz Kazim, MD

Julie Vanderboom

Linda Ketover, MD

Directors

Ex-Officio:

Tom O'Connor

Kristine Fortman, PhD

Richard L. Meyer

Dan O'Laughlin, MD

Chase Sovell, MD

Board Committee Leadership

DEVELOPMENT AND STEWARDSHIP

Carol Huttner, co-chair

Ted Loftness, MD, co-chair

DISTRIBUTION

Tamera Lillemoe, MD, chair

Donald MacMillan, vice chair

FINANCE AND INVESTMENT

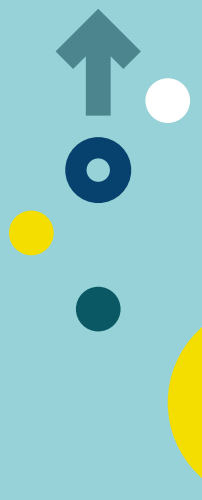
Kita McVay, chair

Jason Paulnock, vice chair

GOVERNANCE

Linda Ketover, MD, chair

Cari Erickson, vice chair





The ripple effect

Mike and Ann Ciresi's gift creates a new fund to help Abbott Northwestern employees who are experiencing a financial hardship. Their gift came about because of something unexpected: Ann's sudden hospitalization after a cancer diagnosis.

"Our doctors at Abbott Northwestern were fantastic, and we can't rave enough about the nurses and nursing assistants. We got to know many of the caregivers, and a great number were immigrants. They were so authentically true and honest in the care they provided, and extremely caring, attentive and kind. We wanted to find some way of helping employees when they have needs that affect their financial situation, because that impacts their ability to give care to patients. If you throw a pebble in the water, it has ripples – and when you help a person in need, that helps others. We're only here a short time, so we should live our lives with purpose and in collaboration with others to serve the common good."

"If you throw a pebble in the water, it has ripples – and when you help a person in need, that helps others."

Your contributions at work

We supported many important initiatives in 2017. Here are some examples of how we distributed philanthropic dollars during the past year.



Patient programs and education – \$2.9 million

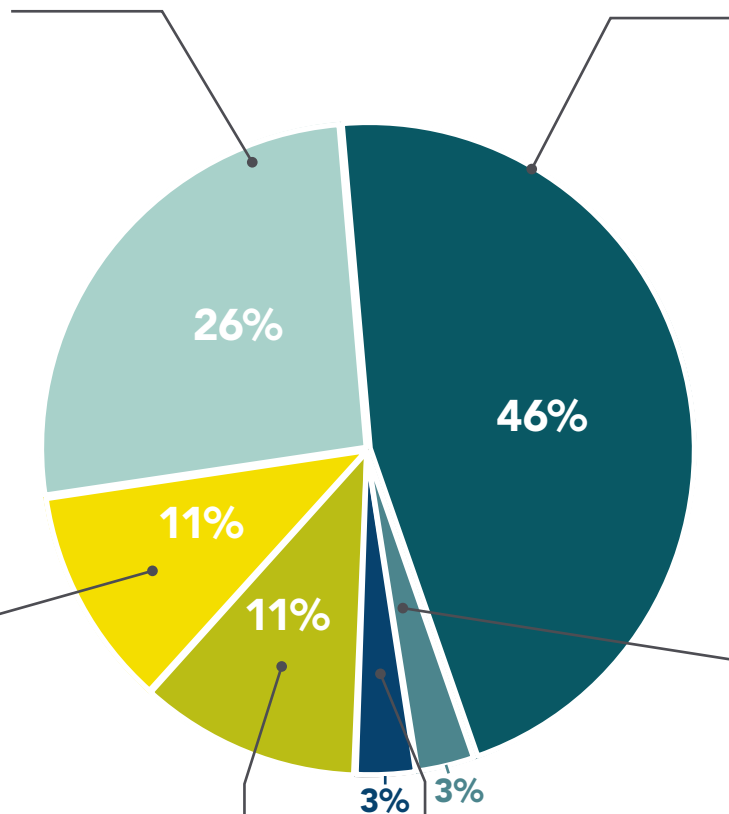
- Instructional video for patients newly diagnosed with breast and ovarian cancer to prepare them for next steps in their treatment
- Acupuncture services in the Burwell Emergency Department to treat patients' pain without the use of opioids
- Table games, puzzles, coloring books and other materials for adults and children in waiting areas to reduce their anxiety and stress



Construction and medical equipment – \$5.1 million

- Two suites in the Piper Breast Center to incorporate acupuncture into treatment
- Final construction costs for the Rodney and Barbara Burwell Emergency Department

\$11.3 million



Research – \$1.2 million

- Studying very small breast cancers to determine which patients benefit from lymph node biopsy and which patients can be spared from the procedure
- Studying the use of nitrous oxide for moms' pain management during labor
- Evaluating the effects of using the Allina Health electronic medical record system to support mental health services in the primary care setting



Clinical education – \$1.1 million

- Nurses' education, training and certification to increase their skills and maintain Abbott Northwestern's Magnet® designation
- Intercultural education for physicians, chaplains, nurses and other staff who work with patients from increasingly diverse backgrounds



Patient assistance and free care – \$390,000

- Prescription assistance for patients who could not afford their medications
- Medical care in the Abbott Northwestern Medicine Clinic for patients unable to pay
- Emergency financial assistance for breast cancer patients to help with everyday expenses



Community programs – \$338,000

- Clare Housing, which provides affordable housing, support services and compassionate care to people living with and affected by HIV/AIDS
- Project for Pride in Living, which provides community members with employment training, support services and affordable housing
- Bilingual care coordinators and supported medical, dental and mental health services for patients at two community clinics



Community Giving Campaign committee members

2017 Highlights

FINAL YEAR FOR DESSERT IN THE GARDEN

Since 2004, Jackie and Tim Overom have hosted Dessert in the Garden, a summertime event to raise support for Piper Breast Center. In later years, it became a tribute to Jackie's good friend Liz, who did not survive her battle with breast cancer.

After 13 years, the final Dessert in the Garden took place on July 10, 2017. That evening, Tamera Lillemoe, MD, Board member and lead Abbott Northwestern breast cancer pathologist, highlighted how support from Dessert in the Garden has made a difference at Piper Breast Center. She noted that all patients now have access to cancer care navigators, hundreds have received emergency financial support, and many have benefited from research to identify the best courses of treatment. She also introduced 17 Virginia Piper Cancer Institute® colleagues in attendance that evening to pay a special tribute to the Overoms and to thank them for their efforts, which in all **raised nearly \$100,000** for Piper Breast Center.

NURSING EXCELLENCE INITIATIVE GATHERS MOMENTUM

In October 2015, the Abbott Northwestern Hospital Foundation Board of Directors authorized a multi-year Nursing Excellence fundraising initiative. The goal is to raise \$7.5 million over five years to support educational opportunities and professional development for Abbott Northwestern nurses. Philanthropy will help nurses pursue educational degrees, attend conferences and become certified in a specialty, and will support the continued development of the Vanderboom Learning Center, a simulation lab in the hospital for experiential and on-the-job training for nurses and patient care teams.

In 2017, more than 170 community members **gave \$2,580,794** for Nursing Excellence. These dollars were raised with the support of a six-member Nursing Excellence Fundraising Task Force consisting of community and hospital leaders.

ALLINA HEALTH COMMUNITY GIVING CAMPAIGN RAISES \$1.53 MILLION

Each fall, Abbott Northwestern and Allina Health celebrate the Community Giving Campaign, a time when employees across the system come together to support hospital programs and community causes by making charitable donations. In 2017, Abbott Northwestern employees **contributed more than \$280,000** to causes that range from patient prescription assistance, to local food banks to cardiac care. Across Allina Health, more than 4,200 employees gave \$1.53 million in support of 137 different Allina Health programs and services, 365 local and national organizations, and 16 United Way agencies.

MEDICAL STAFF DONATE MORE THAN \$700,000 THROUGH PLUS ONE IN 2017

Abbott Northwestern physicians continue to demonstrate compassion beyond the exam room through their collective philanthropy. Since the Plus One physician giving society was established in 2006, physicians have contributed more than \$6.5 million to hospital programs to benefit research, patient care and other non-profit organizations in the communities surrounding Abbott Northwestern. Plus One is flourishing thanks to many generous physicians and physician groups who see the tangible impact of their gifts every day, perpetuating the hospital's excellence in care and service to our community.

One such generous and inspiring physician is Brian French, MD, pictured below, lead physician with the Abbott Northwestern Hospitalists Service. He rallied participation from his colleagues in a unique way to support the hospital's annual gala, Medicine Ball, to benefit Mental Health and Addiction Services.



Brian French, MD, a member of Plus One, the physician giving society

SPECIAL GATHERING CELEBRATES GENEROSITY AND FRIENDSHIP

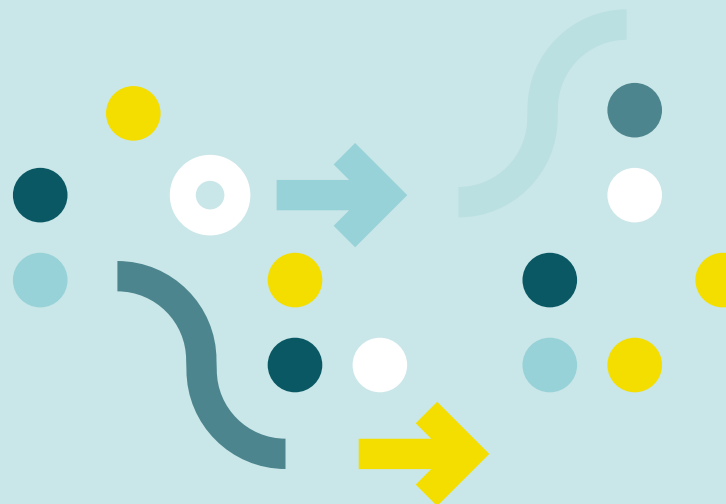
Donors who contribute \$5,000 or more annually are recognized as members of the Foundation's President's Circle. Each year, these generous supporters of Abbott Northwestern Hospital are invited to a special gathering with hospital leaders and Foundation Board members. In 2017, Abbott Northwestern Hospital Foundation Board Chair Linda Goldenberg and her husband, Jack, hosted a lively and delightful event at their home. President's Circle chair and board member Ted Loftness, MD, welcomed and thanked guests for their commitment and generosity to the hospital.



Deb Hopp and Board member Mumtaz Kazim, MD, at the President's Circle Party

HONORING A TRADITION OF NURSING EXCELLENCE

We welcomed **more than 100 retired nurses and nursing school alumni** back to campus in August for the annual Nurse Reunion. The event was filled with joy and laughter and more than a few hugs. Guests also had the opportunity to learn how philanthropy is strengthening and shaping our nurses through the Nursing Excellence Initiative.



Fifteen years of transformative giving

2003

- The Institute for Health and Healing was established at Abbott Northwestern with support from The George Family Foundation and the Ted and Roberta Mann Foundation.
- The first annual Employee Giving Campaign, now known as the Community Giving Campaign, raised \$147,000.



2007

- With support from donors, Abbott Northwestern invested in innovative technologies like the intraoperative MRI scanner to provide real-time imaging during brain surgery, and the da Vinci® Surgical System, robotic technology that makes many types of surgeries less invasive.



2009

- Abbott Northwestern achieved Magnet Recognition Program® status through the American Nurses Credentialing Center, an honor that was repeated in 2014. The Foundation has created a strong partnership with the Nursing Department to support the advanced training, education, specialty certification and nurse-led research that is required for nurses to deliver exceptional care.
- With support from more than 12,000 donors, the Foundation raised \$38 million (\$4.4 million over goal) for the Virginia Piper Cancer Institute Vision Campaign. This helped the Institute expand its research capabilities, add nurse care coordinators to its team, and build teams of specialists who work collaboratively to treat cancer. It has also expanded its reach to serve patients across the region.



2005

- The 256-bed Heart Hospital opened, providing new and expanded space for cardiovascular, neuroscience, spine and orthopedic care. Donors contributed \$52 million to support the project.

2008

- A \$6 million grant from the Robina Foundation allowed Abbott Northwestern General Medicine Associates to pilot a new primary care model for adults with chronic conditions that included using care guides to support and encourage patients.
- The Foundation concluded a \$15 million campaign for the Institute for Health and Healing. Renamed the Penny George™ Institute for Health and Healing, it has become a national leader in holistic health care and now serves patients and communities throughout the Allina Health system.

The Abbott Northwestern Hospital Foundation was established in 2002 and marked its 15th anniversary in 2017. Over the years, many of the hospital's most noteworthy achievements reflected how philanthropy drives transformative change. Some of these important milestones are highlighted here.



2013

- The Mother Baby Center at Abbott Northwestern and Children's Minnesota opened, combining under one roof all the services that moms and babies need. Muffy MacMillan and Rick Chaffee co-chaired the campaign that raised \$5.8 million from 646 donors to support the project.

2016

- The \$15 million Critical Care Campaign, led by co-chairs Ann Bentdahl and Ron Poole, wrapped up, attracting 832 donors. The Burwell Emergency Department will be completed in late 2018, and planning is underway for construction of the Richard M. Schulze Family Foundation's Center for Excellence in Neurological Care.
- Plus One, Abbott Northwestern's physician giving society, turned 10 years old. During its first decade, physicians donated more than \$5.8 million.



2010

- Under the leadership of Board member Muffy MacMillan, the Foundation established the President's Circle, a giving society for donors who give \$5,000 or more annually. MacMillan also hosted the first President's Circle party, which has become an annual event.

2014

- With funding from the Foundation and Farm Credit organizations AgStar Financial Services, AgriBank, CoBank and United FCS, the Minneapolis Heart Institute® began offering TeleHeart services so specialists can remotely treat patients in rural communities.

2017

- Abbott Northwestern began developing a 10-year plan to transform the hospital campus, the start of a new chapter of partnership with the Foundation to enhance care for patients and serve the community.



Emcee Ken Barlow



Singer Adam Levy

A guest dancing to the Purple Xperience

Medicine Ball 2017

Saturday, Sept. 23 was a night of hope, inspiration and resilience.



A record **\$1.1 million was raised** for Mental Health and Addiction Services at Abbott Northwestern Hospital. The evening was a powerful reminder that mental health conditions affect one in four adults, and one grateful patient shared her story about her journey to find healing. Abbott Northwestern is committed to developing solutions so that patients receive the right care at the right place at the right time.

Guests were transported to late-19th century Provence and danced under a starry sky to the sounds of the renowned Prince tribute band, the Purple Xperience.

**Cari Erickson and
Cynthia MacMillan**

co-chairs

STARRY NIGHT



Neal Erickson, Susan Erickson, Cari Erickson, Staci Richardson and Scott Richardson



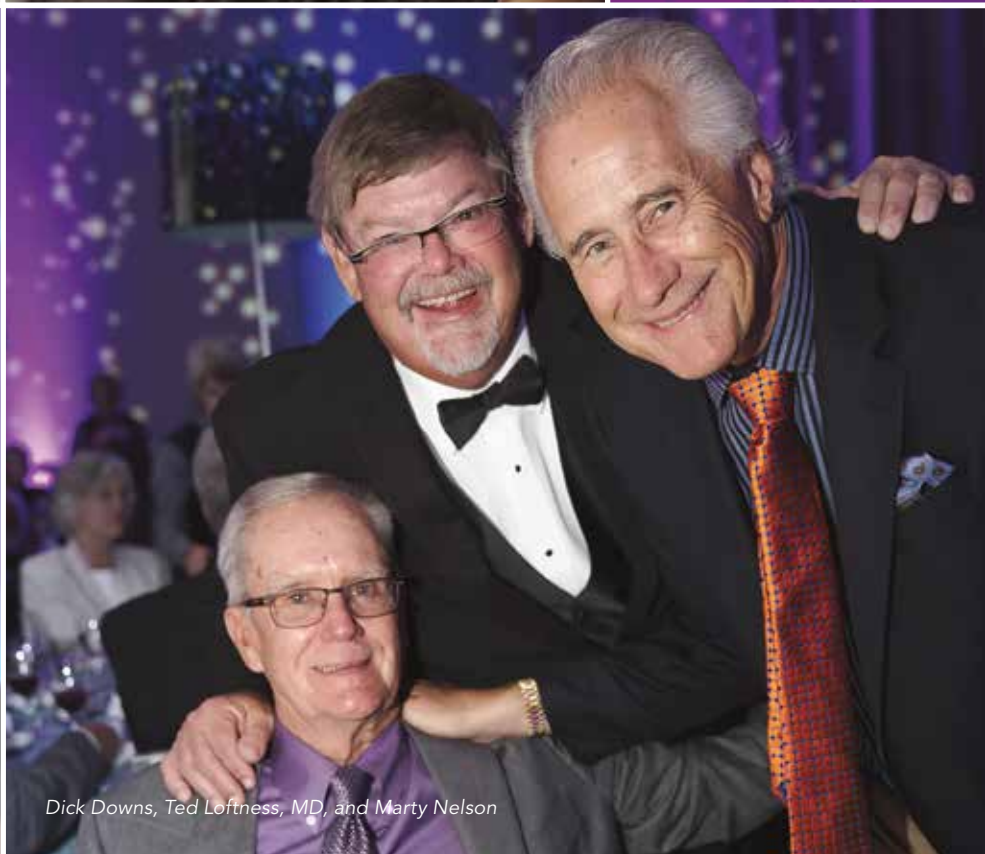
Cynthia MacMillan



Lead singer of the Purple Xperience



Mental Health Services medical director Beth LaRusso, MD



Dick Downs, Ted Loffness, MD, and Marty Nelson



Real needs, new solutions

A recent gift from Lisa Schneider, MD, pictured above, and her husband, John Nicotra, MD, helped launch a unique partnership with Minnesota's leading children's mental health center to serve children and teens with mental health needs who are seen in Abbott Northwestern's Burwell Emergency Department (ED). It places a Washburn Center for Children social worker in the ED to provide immediate support for children, expedite care within the hospital's pediatric mental health unit or at the Washburn Center, and connect families with community resources.

"Both of us were brought up in families in which charitable giving is just what you do. It's become a cornerstone of our marriage. In our travels and as we speak with people, it's clear that the two areas that can really advance society are health care and education, and that's where we've focused our philanthropy. As physicians, we see firsthand the impact of societal ills when people don't have access to good health care. We practice in a very sophisticated medical community, yet there is a real need in providing mental health services. That's why this project really spoke to us."

Honor Roll of Lifetime Contributors

The extraordinary philanthropists listed below have achieved a lifetime giving level of \$1 million or more. We offer our deepest gratitude to these individuals and organizations who have transformed how care is delivered at Abbott Northwestern Hospital.

VISIONARIES

\$1,000,000 and above

Anonymous (2)	Elizabeth B. and Eugene W. Leonard*
3M Championship	The Luther Family Foundation
3M Company General Offices	The Martha "Muffy" MacMillan Family
3M Foundation, Inc.	Whitney and Betty MacMillan
Abbott Northwestern Courage Kenny Auxiliary	Ted and Dr. Roberta Mann Foundation
Allina Health	Mr. Richard F. McCarthy*
Constance L. Bakken	The Medtronic Foundation
Dr. Paul J. Bilka*	MG Charities, Michael* and Linda Givens family
Blythe Brenden, Brenden-Mann Foundation	The Minneapolis Foundation
Mr. and Mrs. Conley Brooks, Sr.*	Mr. and Mrs. John M. Morrison
Rod* and Barbara Burwell, Rodney and Barbara Burwell Family Foundation	Dr. and Mrs. William E. Petersen
Kenneth N.* and Julia W. Dayton	Piper Family Fund of The Minneapolis Foundation
Mary Lee Dayton*	Harry and Mary Piper
Beverlee Dorn*	Tad and Cindy Piper
Merle I. Dobbs*	Virginia and Harry Piper, Jr.*
George Family Foundation, Penny and Bill George	Carl and Eloise Pohlad*
Velva S. Guesmer*	Carl and Eloise Pohlad Family Foundation
Martha B. Hartfiel	Robina Foundation
Donald and Jan Hennings	Richard M. Schulze Family Foundation
John Hollern*/Greystone Foundation	Ruth Stricker Dayton and Bruce Dayton*
Gary Holmes	The Wasie Foundation
Mary Holmes	Wood-Rill Foundation
Theodora H. Lang*	

*deceased

A warm thank you to our Lifetime Donors

We offer our heartfelt thanks to the individuals, foundations and organizations who have achieved a lifetime giving level of \$25,000 or more. They play a particularly meaningful role in supporting exceptional care for patients and families of Abbott Northwestern Hospital.

These special donors are recognized on our hospital lobby donor wall, and a complete list of these donors can be found at allinahealth.org/anwfoundation.

Guarantors

Guarantors are friends of Abbott Northwestern who donated \$250-\$4,999 to Abbott Northwestern Hospital Foundation in 2017. These generous gifts provide support to a multitude of life-saving and life-enhancing programs for patients and families.

President's Circle donors who gave \$5,000 or more in 2017 are recognized on page 28.

We strive for accuracy when preparing these lists and apologize for any errors that may appear. We invite you to notify the Abbott Northwestern Hospital Foundation office at 612-863-4126 to make any corrections.

Anonymous (22)	Deena Bartley and RuAjna Kai	Wendi G. Bowlin	Alissa Carney
Barbara and Win Adams	Patrick and Andrea Bassett	Dr. Craig and Stephanie Bowron	Elizabeth Carter
Adobe Systems Incorporated	Dr. Ken and Lori Batts	Chrissie and Dustin Boyd	Dr. Carter Casmaer
Advanced Metal Products	Ryan Behrens	Erin Brager	Roberta Cassidy
Nina and Andrew Ager	Earl and Lynnette Beitzel	Jennifer Brandenburg	Tom and Janice Cavallin
Dr. Robert and Pat Ahrens	Bell International Laboratories, Inc.	Brenda Breffle	Sarah and Ahmed Charai
Alternative Business Furniture	Dr. Joseph Bellamy	Dr. Wade and Kesha Brennom	Patrick and Shelley Chervenak
Ann and Duaine Amundson	Marshall Bendalin	Lester and Susan Breuer	Renee and Doug Christensen
Carol and Frank Anderson	Richard P. Bendel, MD	Shelly and John Brock	Scott Churchill
Dr. Kayla Anderson	Dr. Michael and Dr. Ellen Bendel-Stenzel	David C. Brown	Mary and Michael Clark
Lisa K. and Jon Anderson	Ann Bentdahl and Roger Smith	Ted and Amy Browne	Jileen Clasen Hollenback
Zenobia Anderson	Dr. Robby Bershaw	Mary and Ben Brucciani	Andrea Claussen
Peter W. and Sally A. Anson	Dr. Bryce and Pamela Beverlin	Greg and Lori Brusehaver	Dr. David and Wanda Cline
Sally A. Anson Fund of The Minneapolis Foundation	Thomas and Sherry Bianchi-Knod	Jon and Cathy Buggy	Joe and Ann Clubb
Dr. Lauren and Gregory Anthony	Colin and Janet Bird	Dr. Larry and Julie Burgart	Dr. Kimberly Cochran
Thomas Antilley	Diane C. Bishop	Dr. Andy and Sherilyn Burgdorf	Dr. Margaret and David Cochrane
Marcia Armstrong	Mary Bittner	Dr. M. Nicholas Burke and Sue Slattery-Burke	Doug and Lois Coleman
Dr. Lee and Katherine Arostegui	Pamela and Steven Bjoraker	Jack and Marsha Burmaster	Douglas and Sands Coleman Fund of The Minneapolis Foundation
Amy Asplund	Trisha and Robert Blake	David and Cassie Burns	Julie and Jonathan Cook
Associated Healthcare Credit Union	Jane Robertson Blanch	Dr. Dan and Christine Buss	Shaina Coon
Dr. Jennifer Auge	Barbara Bly	Cullen and Ann Byre	Dr. Gary and Lucia Copland
Maria Babou	Dr. Kristie Bodnar and James Ryshavy	Mary Cameron-Crone	Catherine Coppersmith
Andrew and Karla Bach	Gary and Susan Bohn	John B. Cardle, MD	Jeanne Corwin
Steven Bailey and Jackie Moen	Wayne and Linda Boike	Alan and Susan Carlson	Sandra Coudray
Barbara Ball	Dorothy Borgstrom	Dr. David and Karen Carlson	Adam Coyle
Dr. Nilanjana Banerji	April Bowen	Dr. Jessica and Darren Carlson	Dr. Jim and Roberta Craig
Bank of America Charitable Foundation	Dr. Mike and Sharon Bowen	Mary and Gary Carlson	Robert and Jill Craig
	Dr. Nathaniel and Carrie Bowler	Robert W. Carlson Foundation	Crothall Healthcare
			Jared and Heidi Crotteau
			Charlie and Kathy Cunningham



Just doing my best

Each year, employees at Abbott Northwestern are invited to donate to an Abbott Northwestern or Allina Health charitable fund, or to the charitable cause of their choice through the Community Giving Campaign. The 200-member Environmental Services Department often has one of the highest participation rates of any department of a similar size in the hospital. Among these donors is Barry Washington, a 25-year employee. For him, charitable giving is just one more way to help people.

“My job in the hospital is keeping the floors clean so that when people walk in, their first impression of the hospital is a good one. That’s important to me. I try to do my best. When I’m not at work, I am a caregiver for my sister, who is disabled, or I am visiting my 89-year-old mother in the nursing home. I donate to the Community Giving Campaign every year. I’m not rich, but I love to help people whenever I can.”



Paying it forward

There was a time when Tara Koenig couldn't imagine being able to repay Abbott Northwestern for the charity care she received as an uninsured, single mother more than 15 years ago. That's changed, now that she is co-owner of the Hen House Eatery in Minneapolis.

"I had gone to my neighborhood clinic because I was not feeling well. They immediately sent me to Abbott Northwestern where I was diagnosed with spinal meningitis. I got better within a week, but I had no insurance. The person I spoke with on the phone told me to pay what I could pay, and if I had the resources in the future, I should pay it forward. I think I laughed at the time. I was a single mom, waiting tables, and couldn't imagine being able to do that. Little did I know that 15 years later I would be in business for myself and doing well. I was able to pay it back, and I hope it can be used to help someone in the same way I was helped. In my family, we were brought up helping our neighbors. If you can do good for others, you should."

"In my family, we were brought up helping our neighbors. If you can do good for others, you should."

Christopher Dahl, Jr.	Jim and Linda Epperson	Kevin Giertsen	Chris Harwood
Jessica Dailey	Sue and Duane Erdman	Daryl Gilpin	Marialice and Nevin Harwood
Scott and Dana Dallmann	Mary Erickson	Dr. and Mrs. Douglas A. Godfrey	Robert and Leah Harrison Stich Fund
Dr. Jason and Mindy Daniels	Sandra and Donald Erickson	Dr. Paul Goering and Mike Sullivan	Frederick and Janet Hass
Dr. Milton Datta	Ted and Angie Erickson	Kaye Goldberg	Dr. Robert and Milen Haung
Rebecca Davis	Dr. Navid Estharabadi	Dr. Stanley and Luella Goldberg	Dr. Emily Hawes-Van Pelt and F. Van Pelt
Dr. Tom Davis	Robert Evenson	Stanley M. and Luella G. Goldberg Family Foundation	Deborah and Michael Hawthorne
Dr. Daniel and Dr. Deb Day	Gene and Pat Ewing	Joseph and Gayle Gondek	Steve and Joanne Hayden
Cornelia and Eric Dayton	Pat and Gene Ewing Fund of the Greater Cincinnati Foundation	Dr. Joe and Visala Goswitz	Nikole Held
Douglas and Wendy Dayton Foundation	Anne Fashant	John Gougebas	Mary Heller
Wendy Dayton	Jeanne and John Fifield	Dr. Jack and Susan Graber	Brock and Julie Heller
Catherine Dean	Dr. Caryn Fine and Beth Swedberg	GrayMatterGreetings	Maia Hendrickson
Julie Dearing	Amy Fischer	Green Building Innovations Corp.	Matthew and Anne Hendrickson
Dell Giving	Michael Fitzgerald and Cheryl Kreofsky	William Greenblat	Dr. Jesse Hennum and Pamela Marentette
Kathryn Derner	Hayden and Allison Flack	Greene Family Foundation	Dr. Julie and Steven Henseler
Jody Determan	Dr. Greg Folsom	Hunt Greene and Jane Piccard	Dr. Michele and Andy Herring
Diamond Women's Center	Kris Fortman, PhD	David and Jane Gregerson	Michele and Andy Herring Family Fund of The Minneapolis Foundation
Laurie Diercks	Christopher Foss	Mary Griffith	Dr. Karen L. Hessel
Dr. H. Parry Dilworth and Cynthia Levine	Mary Fouche-Dill	Dr. Erin Grimm and Charles Van Winkle	Rod and Susan Heuer
Corinne Dodgen	Robert Frady	Jeffrey Gross	James and Tracey Hickey
Ernie and Mary Dorn	Marcia and Charles Frame	Joanne Groten	Nicki Hines
Jill Dornbush	Dr. Elliot and Cheryl Francke	Lauren Gruendeman	Paul and Tricia Hinz
Nancy Dornfeld	Martha Frederickson	Anne Guiral	Bill Hippee
Bruce Douglas and Shari Baldinger-Douglas	Dr. Brian and Dawn French	Bradley and Kristine Gullickson	Dr. Patrick Hobbins
Paula Dulas	Dr. Sara and Scott Friedman	Thom and Stephanie Gunderson	Beth Hoffman and Wojciech Zukowski
Deb Dullinger	Ron and Joan Gaarder	Kristine Haines	Frances Hoffman
Denise Dunbar-Perkins	Steven Gantner	Jeffrey and Margaret Hall	Sandra Hoffman
Dunham Associates, Inc.	Minda Garcia	Marsha Hallstead	The Hognander Foundation
The Earth and Quirks Fund	Gudrun Gates	Rebecca Hansen	Harley and Pam Hohenstein
Nancy Garner Ebert and James Ebert	Marti and Mike Gaydos	Rosa E. Hansen	Dr. Jonathan and Jennifer Hokanson
Dr. Peter M. Eckman	Dr. Rich and Suzanne Geise	Donna Hanson	Dr. Amy and Matthew Holbrook
Ecolab, Inc.	Laura Genzler	Dr. Jeff Hanson and Dr. Margit Bretzke	Dr. Tom Horejsi and Rachel Gaynor-Horejsi
Dr. Sam and Kathy Economou	James and Nancy Gerber	Dr. Brenda Harris and Daniel Firehammer	Dr. Chuck Horwitz
Alan and Lollie Eidsness	Lisa Gersema		Denise Houser
Stephanie Eller	The Gibbs Family Charitable Account		
Dr. Marc Ellingson	Lynn Gibbs		
Michael Ellingsworth	Dr. Lynne Gibeau and Peter Thelen		
Bill and Carmelita Ellis			
Jeremy and Heather Enger			

Meredith Howell	Dr. Thomas and Pamela Keul	Mimi Lindell	Dr. Gary Mayeux
Dr. Dan Huesgen	Dr. Beth Kilburg and Louise Castner	Dr. Daniel and Martha Lips	Jennifer and Ryan McAnnany
Rusty Huff	Karen and Daniel Kinsella	Liquor Boy	James and Diane McCarthy
Katharine K. Jackson	Dr. Justin Kirven	Dr. Steve Litton	Jim and Diane McCarthy Foundation
Brian Jacobs	Lucy Klos	James Lockhart and Janie Mayeron	Katherine McClure
Louise and Gary Jacobs	Andrew Kock	Lockhart/Mayeron Family Foundation	Dr. Stanley and Judith McCormick
Peggy and Larry Janssen	Phyllis Kohler	Cory and Susan Long	Kenneth McCraley
Kathryn Jenny-Burville	Robert and Corrie Konen	Dr. Terry and Barbara Longe	Lynn McDonald
Dr. Gretchen Johnsen	Shirley and Virgil Koski	Barbara S. Longfellow	Dr. William McDonald
Arnold* and Arlys Johnson	Dr. Thomas and Stacy Kowalkowski	Dr. Phil and Madeleine Lowry	Mary Pat McGinnis and Don Pitlik
Charlie Johnson	Dr. Rebecca Krill	Katherine Lucht	Dr. Jennifer McKeand and Christopher Williams
Dan and Bridget Johnson	Corrine K. Kroehler	Bill Lurton	Dr. John and Janet McKelvey
Dr. Dawn and Troy Johnson	Dr. Paul Kuneck	H. William Lurton Foundation	Carol McKenzie
Dr. Gary and Janet Johnson	Tony and Laura Lacroix-Dalluhn	Dr. David and Sheila Lynch-Salamon	Cindy McKenzie
Mary and Dale Johnson	Kent Lacy	Christopher and Stephanie Lyons	Dr. Terry McLaughlin and Nicole Kveton
Dr. Nick and Abigail Johnson	Dr. Cindy Lais and John Walkowiak	Dr. Lisa Lyons and Timothy Walker	John and Jane McNeill
Richard Johnson	Mary and Francis Lambert	David MacCallum	Molly McShane
Thomas and Margaret Johnson	The Langdon, Inc.	Dr. Suzanne and Michael MacDonald	Dr. Peter Melchert
Dr. Dan and Kara Johnston	Dr. Mary Lardizabal and Dr. Alex Marie	Mary Jo Macklem	Dr. Margaret Menezes-Ruocco
Shanneaka Jones	Bonnie Larson Kuslich	Paula Magnuson	Dr. Mike Menzel and Kathy Iverson
Dr. Chuck and Dr. Sally Jorgensen	Cheryl Larson	Travis Maher	Meristem Family Wealth
The K Foundation	Lorrie and James R. Larson, MD	Michelle and Terry Maier	Becky Merrick
Dr. Zhanna Kabanova and Gene Shendov	Dr. Beth LaRusso	Dr. Sarah and David Mainguy	Dr. Roxana L. Merz
Arnold P. and Shirley J. Kaplan	Dr. Anne-Marie Lee	Alyssa Maizan	Annie and Rich Meyer
Dr. Chris and Molly Kapsner	Dr. Brenda Leech and Mark Talkington	Jan Malcolm	Anne Meyer-Ruppel
Sarah Kaspari	Maurita and Jeff Lehman	Bill Manning and Ruth Mickelsen	Mary Miller
Kurt and Gina Kastel	Paul and Jeanne Leighton	Marbrook Foundation	Melba Miller
Dr. Brenda Katz	Kari Lessard	Daniel Marcouiller	Minnesota Oncology
Dr. Katherine and John Katzung	Bruce and Judy Lester	Beth Marks	Molly Moede
Jane and Jim Kaufman	Dr. Judy Levitan	Kirsten Martensen	Bruce Mogren
Jane and Jim Kaufman Fund of The Minneapolis Foundation	Roxanne Lewis	Dr. Jena Martin	Don Monaco
Dr. Ron and Pam Kaufman	Todd and Jane Lewis	Sue and Lee Martinsen	Sara and Bruce Monick
Dr. Warren Kearney	Gregg and Laurie Lien	Dr. Adnan and Asma Masood	Tonya and Monty Montesinos
Kathleen Keller	John Lientz	Dean and Sue Mathews	Dr. Kelly Morrison and John Willoughby
Jim and Patty Kelley	Lori Lindahl	Dr. Ayman Matta and Cherine Fahmy	Dr. Amy and Mark Morrow
Jean and Edward Kellogg	Jana Lindberg	Charlie Maxwell	Dr. Mark Mount
Kate Kersten	Kevin and Laurie Linde		



Knowledge is everything

A gift from Julie Vanderboom, shown above during a simulation training session, and her husband, Steve Vanderboom, established the Vanderboom Learning Center, a simulation center that helps nurses and other care providers develop critical, in-the-moment skills and adapt to rapidly changing technology.

“As we learned what was planned for this center, we became very excited about the opportunity to support it. I’ve been a nurse for 33 years, and when I reflect on what I would have changed over that time, it would be to find ways to support new nurses just starting out in practice. We have lots of opportunities for formal education and certifications for nurses, but nurses have lacked a place where they can develop clinical skills in a safe environment. Also, nursing does not practice in isolation. The Learning Center simulations can involve other providers and help promote teamwork – for example, in responding to a cardiac arrest. Abbott Northwestern is doing so many things right in relation to patient care. If we want to ensure better outcomes and improved lives, we have to give nurses and other providers the right tools to do their jobs well.”

“If we want to ensure better outcomes and improved lives, we have to give nurses and other providers the right tools to do their jobs well.”



From lemons to lemonade

Donna Brandell, at right, who was treated for a brain tumor in 2009, and her daughter, Alyson, at left, donate more than half of the proceeds from their online Etsy shop, GrayMatterGreetings, to support brain tumor research through the Givens Brain Tumor Center at Abbott Northwestern.

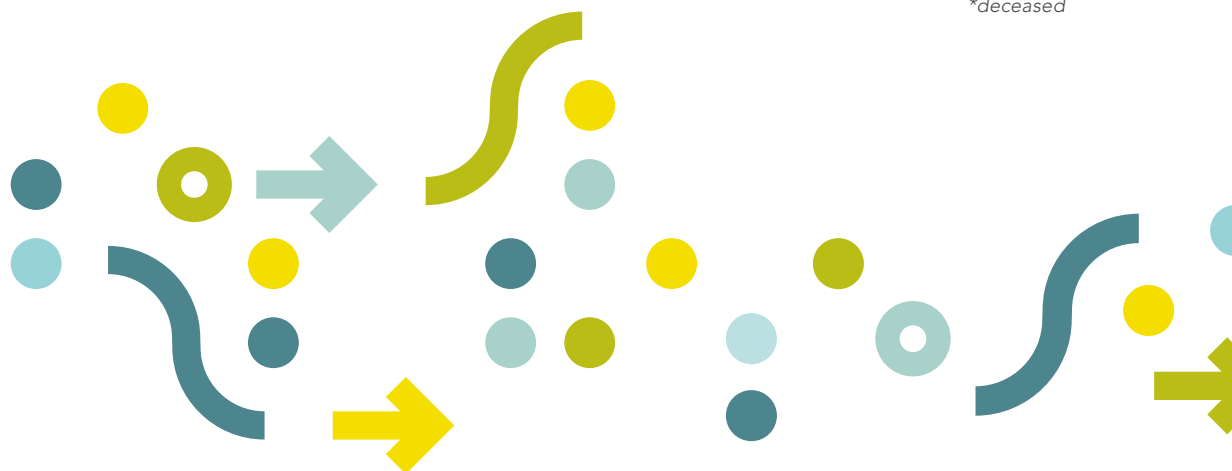
"I had been a teacher for 30 years when I learned I had a large brain tumor. I was in the hospital for two months and in rehabilitation for two years. I couldn't go back to teaching, and I missed it dearly. I began volunteering with Courage Kenny Rehabilitation Institute patients at Mercy Hospital and decided some of the bulletin boards in the hospital needed brightening up, so I made decorations. Then I started making cards for people at the hospital, and people began asking me to make cards for them. That's when the light bulb went on, and my daughter suggested we start a card shop on Etsy. I just want to brighten someone else's day. I had a long recovery, and I know what a difference that can make. As Alyson wrote on our Etsy page, this is the result of taking lemons and making lemonade."

"I just want to brighten someone else's day. I had a long recovery, and I know what a difference that can make."

Dr. Tonia Mowbray-Donahue and Christopher Donahue	Dr. Gene and Julie Ollila Douglas and Mary Olson	Dr. Mary and Jim Radomski Ben and Mimi Rae	Carol Rueppel and Gregory Reiland
Bill Mueller	Nancee Olson	Dr. Geoffrey and Cheryl Raile	Lorna Rupp
Dr. Maximillian Mulder Corrochano and Maria Franco Pino	Jenny O'Malley	Lori Ramig	Dr. Brent and Dr. Lori Ryan
Dr. Phillip and Sarah Mumm	Bart and Kandi Osborn	Mary Randolph	Dr. Ramiro Saavedra Romero and Brenda Saavedra
Brian and Amanda Murphy	S. Bartley Osborn Family Charitable Trust	Jamie Rassett	Dr. Pamela Sakkinen
Judith Murphy	Dr. Michael O'Sullivan	Mary Rassmussen	Carol Ann Sander
Patti L. Murphy	Ronald and Marlys Ousky	Walter B. Rasula	Dr. Schuyler Sanderson
Anne Muster	Dr. John Overton and Dr. Ann Lowry	Kevin and Trudy Rautio	Mohammad Saremi
Neil Naftalin	Dr. Diana and Vidhu Pandey	Deett Rayman	Dr. Paul Satterlee and Leslie Katz-Satterlee
Judith Napier and Bryan Aaker	Dr. Bill and Susan Parham	Dr. Jason and Susan Reed	Cynthia Savage-Oman
National Christian Foundation Twin Cities	Park Nicollet Foundation	John J. Reinartz, MD	Douglas and Joanne Savitt
Alexander Nazarenko	Dr. John and JoAnn Pastorius	Nancy and Dan Reiners	Rob and Aly Sayre
Bill Neiman	Dr. Love and Ruchi Patel	Connie and Lew Remele	Joan Scherrer
Dr. Dana Nelson and Brent Schroeder	John Patrikus	The Remele Family Fund	Mary Schiltgen-Bobzien
Mike and Barb Nelson	Dr. Francisco and Carly Paz	Renaissance Charitable Foundation, Inc.	Patricia W. Schirmers
Rhonda Nelson	Roger and Estelle Pearson	David Reul	Margaret Schmidt
Franklin and Mary Newell	Sandy and Joe Peasha	Patrice Rhode	Dr. Tom and Suzanne Schriefer
Philip and Mary Newhall	Dr. Andrew and Carrie Peltier	Dr. Hallie and Dr. Steve Richards	Carol and Elmer Schwankl
Mary Newman	Dr. Pat Penovich and Dr. Gerald Moriarty	Dr. Linda Riley and Randy Smith	Dr. Bob and Belle Scott
Robert and Jennifer Nicholson	Bradley Pester	Ms. Elizabeth M. Ringer	Deborah Scott
Renee Norbeck	Carolyn Peterson	Ronald Rising	Kelli Scullen
Susan and Ken Nordberg	Dr. Dave and Sheri Peterson	Betty L. Ritchie	Scott and Susan Seiberlich
Dr. Mary Norris	Ralph Peterson*	Riverbridge Partners Community Fund	Sue Sendelbach
North Oaks Golf Club	Ronald Pflipsen	Barbara and Richard Robinson	Dr. Valeed Shaikh and Sabina Khan
Dr. Erin M. Novak	Connie Phillips	Tom and Kathy Rockvam	Dr. Jack Shelton
Dr. Christopher Obetz and Paola Nunez-Obetz	Buzz and Carolyn Pierce Family Fund of The Minneapolis Foundation	Dr. Donna Rodel and Bernie Waibel	Warren Shepard
Ann and Vince O'Brien	Carolyn and Buzz Pierce	Dr. Joanne Rogin-Abrams and Ron Abrams	Jennifer Sherwood
Suzanne and Kevin O'Brien	Louise B. Plank	Troy and Lori Roovers	Jonathan Shoemaker and Alana Bergman
Obstetrics and Gynecology Associates	Dr. Elizabeth Plocher	Rosborough Family Fund	Julie and William Singewald
Natalia Obuhov	Dr. Mike Plunkett	Dr. Terrill and Patricia Rosborough	Dayton Sjostrom
Gloria I. O'Connell	Faith Pollock	Dr. Brooke Rosonke and Sunidh Jani	Ski Adventures by Tom Gray
Tom and Jo O'Connor	Presbyterian Homes & Services	Michael Rosow and Mona Peterson-Rosow	John Smith
Dr. Dennis and Mary O'Hare	Jeanette Pudas	L.J. Rotman	Mike and Dana Smith
Daniel and Mary O'Keefe	Emily Quick		Cindy and Steve Snyder
Dr. Daniel and Dr. Juliana O'Laughlin	Patricia A. Quigley		Diane and Scott Soderstrom
	Linda and Gaylin Raab		Jennifer Sofie
			Dr. Mike Spencer and Laurie Wilson Spencer

St. Catherine University	Sweet Sioux Garden Club	Dr. Louise Turkula	Stacy Weldon
Chester* and Shirley Stanek	Dr. Karen and Mark Swenson	Andrew and Linnea Turner	Jim Welter
Dr. Michael and Suzi Stanley	Brian Swiglo	The Andrew and Linnea Turner Family Fund	Lindsay Wessels
Tami Steichen	Melissa Symoniak	Craig Twedt	Dr. Sue and Dr. Robert Wheaton
Michelle Stenbeck	Dr. Anil Tadavarthy	Robert Tyberg	Tracy and David White
Brenda Sterner	Mayuree Tanawongsuwan and Rick Sartell	David and Tena Ubl	Dr. Ben and Susan Whitten
Bob and Leah Stich	Dr. Chuen and Angela Tang	John and Mary Ursu	Dr. Bob and Tina Wieland
Dr. Kevin Stieglbauer	Bob and Dorothy Tengdin	Joseph Van Sloun and Benita Bjorgo	Dr. Laura Willson
Addie Stofer	Ailsa and Ken Tessier	Patricia Voigt	Shawna Wilson
Dr. Erik Stoltenberg and Stephanie Peng	Dr. Naomi and Dr. David Tetzlaff	Joanne W. Von Blon	Eleanor and Fred Winston – The Longview Foundation
Dr. Erik and Trupti Storlie	Dr. Chris and Melanie Thiel	Dr. Stanley and Barbara Von Drashek	Fred and Eleanor Winston
Michele and Chad Stout	Mark Thompson	Steven and Tamara Waderich	Lynn Winter
Michelle Streitz	Trent and Kimberly Thompson	Sharon Wahl	Women Anglers of Minnesota, Inc.
Dr. John and Joan Strickler	Thrivent Financial for Lutherans Foundation	Harold and Maryalice Wahlquist	Teddy and Laura Wong
Dr. Dick and Pamela Sturgeon	Amy and John Tillotson	The Wakefield Family Foundation	Dr. Don and Kaye Wothe
Dr. Eric and Kim Sturlaugson	George and Rosemary Townsend	Jeff and Anne Walker Langaard	Dr. Karen Wright and Marc Vacquier
Elisabeth Sturm	Dr. Erin Tracy and Michael Petersen	Rodney Wasem	Nancy and Richard Wyatt
Dr. Patsa Sullivan	Tim and Terri Traudt	Candice and Raymond Washington	Sheng Yang
Dr. Tim and Amy Sullivan	Carol and Mark Tressler	Dr. Jean Watson and Christopher McLaughlin	Kirsten and Marc Yeager
Dr. Omer Sultan	Catherine Trost	Carrie Weaver	Dr. Clara Zamorano and Colin Monette
Doris Sumner	Lynn and Carol Truesdell	Ann Weber	Maria Zarambo
Dr. Barbara Susnik	Truist	Robert and Elizabeth Weides	Jennifer Zielinski
Dr. Paul and Julia Sutter	Dr. Gary and Geri Trummel	Liz Weiner	Kelsey Zielke
Dr. Robert D. Suurmeyer	Dr. Mike and Donna Trump	Brian and Mindy Weinreis	Dr. Larry and Carol Zieske
Dr. John and Amelia Svenningsen	Dawn Tucker		
Claudia and Richard Swager	Dr. Laura and Stephen Tudor		
R.E. Swager Family Foundation			
Jessica Swearingen			
Douglas and Ann* Sweet			

*deceased





Honoring a life well lived

When Sheldon Wert died in 2016, countless stories emerged about people he had helped throughout his life and in his banking, finance and real estate career. The stories, many of which the family knew little of or not at all, spoke to the strong, humble and quiet counsel that Shel provided. Today, that legacy continues, thanks to the generosity of his wife, Jean, and their children. Their contribution in Shel's honor will touch people for years to come – by supporting research at Minneapolis Heart Institute® that leads to better care for patients, and by helping cardiovascular nurses advance their education and strengthen their clinical skills.

“Shel's connection with the Minneapolis Heart Institute® began in 1994 when he needed heart surgery. Then he served on the board and was very involved in building the Heart Hospital. Because of his business background, he really enjoyed being able to provide that kind of help through his volunteer work. He felt strongly about supporting Abbott Northwestern because of the care that our family has received there. He actually requested before he passed that we continue our support, and it's important to me to honor his memory in this way.”

President's Circle

Donors who gave \$5,000 and above in 2017.

Anonymous (2)	Marlene Bixby	Engelsma Family Foundation	Hope Chest for Breast Cancer Foundation
3M Company	Blue Cross and Blue Shield of Minnesota Foundation	Alfred W. Erickson Foundation	Michael and Susan Horovitz
3M Foundation, Inc.	Michael Blum and Abigail Rose	Brian and Susan Erickson	Hospital Pathology Associates, PA
Abbott Northwestern Hospital	Bowling for Brains	Cari Erickson	Mr. and Mrs. William G. Huttner
Abbott Northwestern Hospitalists	Carol and Conley Brooks, Jr.	Gerry and Kay Erickson	Benjamin Jaffray
Abbott Northwestern Intensivists	George and Marsha Buchok	Michael Erickson	JE Dunn Construction
Abbott Northwestern Medical Staff	Rod* and Barbara Burwell	Neal D. and Susan B. Erickson	John A. Haugen Associates, PA
Abbott Vascular Devices	Rodney and Barbara Burwell Family Foundation	Ronald A. and Kristine S. Erickson	Marlys M. Johnson
Accredited Investors Wealth Management	Campbell Foundation	Event Pro, Inc.	Dr. Mumtaz Kazim and Dr. Hossein Aliabadi
Allina Health	James and Carmen Campbell	Kathy and Bill Farley	Dr. Linda and Dr. Scott Ketover
Alton Foundation	Kristin Carlton	Fidelity Charitable	KG Foundation
Howard* and Camilla Alton	Children's Hospitals & Clinics of Minnesota	Form A Feed, Inc.	Aimee S. Klapach, MD
American Anesthesiology of Minnesota	John and Klerissa Church	Michael and Berit Francis	Hugh Klein and Judy Lebedoff
AMN Healthcare	Michael and Ann Ciresi	Dr. Michael and Dr. Lorene Freehill	Barbara G. Koch
Clifford I. and Nancy C. Anderson	Coleman Mason Events	Marna W. Fullerton	Tara Koenig
The Ankeny Foundation	Consulting Radiologists, Ltd.	Gary Gallagher	Roger H.D. and Neroli Lacey
Marie H. Ankeny Legacy Fund of The Minneapolis Foundation	David and Kitty Crosby	Gilbert Mechanical Contractors, Inc.	Dr. Nicholas LaRusso
Archetype Signmakers	Maxine Dacumos	Elaine L. Gingold*	Dr. Mary and James Lawrence
Martha and Bruce Atwater through the Prospect Creek Foundation	Kit Dahl and Deb Hopp	Michael* and Linda Givens	Larry and Jean LeJeune
Dr. Ben and Marge Bache-Wiig	Rob and Julie Daugherty	Linda and Jack Goldenberg	Steve and Sheila Lieberman
Looe and Mary Ann Baker	Julia W. Dayton	Dick and Susan Goldman	Dr. Tami and Kent Lillemoe
Linda and Robert Barrows	Pat and Lisa Denzer	Jane and Edward Griffin	Dr. Kelley Lockhart and Rich Ehrich
Walter and Jane Barry	Dessert in the Garden hosted by Jackie and Tim Overom	Charles M. Harrington*	Maren Loftness
Ralph N. and Charlotte S. Bearman Fund of the Minnesota Community Foundation	Dr. William Dickey and Dr. Karen Steiner	Harris Companies	Dr. Ted and Mary Loftness
Scott and Susan Becker	DJM and CMJR Charitable Foundation	The Hawkins Family	The Longview Foundation
Ramona and Bernie Benson	Mark Donahoe	Hawley Family Foundation	Love Your Melon
Chris and Evon Bent	Pete and Martha Eckerline	Douglas* and Martha Head	Mrs. Harriet T. Ludwick
	Ecolab Foundation	Roger and Lynn Headrick	Mr. and Mrs. Charles D. Luther
	Judy Edin	Don and Jan Hennings	The Luther Family Foundation
	Elliott Contracting Corporation	HGA Architects and Engineers	Mr. Leland T. Lynch and Ms. Terry N. Saario
	Emergency Care Consultants, PA	Dr. Cline and Dianne Hickok	Cynthia and Donald MacMillan
		Hilton Minneapolis Downtown	Donna and Cargill* MacMillan, Jr.
		Thomas and Grace Ann Hinnenthal	
		Carmela Hobbins	

The Martha "Muffy" MacMillan Family	John M. & Susan M. Morrison Fund of the Community Foundation of Collier County	Dr. Lisa Schneider and Dr. John Nicotra	Dr. John Trusheim and Dr. Martha Nance
Nivin and Duncan* MacMillan Foundation	Mortenson Construction	Schwebel, Goetz & Sieben, PA	John and Leslie* Turner
Dr. Deane C. Manolis	Melvorn Mundt	Mary and Jim Schwebel	Emily Anne Staples Tuttle Fund of the Minnesota Community Foundation/Emily Anne and Gedney Tuttle*
Robert W. Maynard*	Ken Murray	Shoulak BreastFest Music Festival	Twin Cities Spine Center
Lisa and L. Pearce McCarty, III, MD	Nelson Family Companies	Judy and Jim Shoulak	UnitedHealth Group
Mr. and Mrs. Robert K. McCrea	Steve and Louise Nelson	Dr. Tim Sielaff and Paula Sell	Urology Associates, Ltd.
Lynne and Paul McDonough	Neurosurgical Associates, Ltd.	Rob and Gayle* Sit	Julie and Steve Vanderboom
The Dick and Joyce H. McFarland Family Fund of The Minneapolis Foundation	Noran Neurological Clinic, PA	Roger J. Sit	Vanguard Charitable
John G. and Lois McNutt Fund of The Minneapolis Foundation	Bob and Gail Onan	Sit Investment Associates Foundation	Visual Communications
Bonnie McPhee and James Prokopanko	The Opus Group	Sit Investment Associates, Inc.	Dr. Bill and Emily Wagner
McVay Foundation	Opus Foundation	Sherry and Jim Smith	Marjorie Weil & Marvin Edward Mitchell Foundation
Kita McVay and Jim Johnson	Greg Page	Mike Snow	David J. Weiner*
Mary M. McVay	Parsons Electric	Sodexo, Inc & Affiliates	David J. Weiner Foundation
Medtronic	Jason and Renee Paulnock	SpecialtyCare	Wells Fargo Bank
Medtronic Restorative Therapies	Perkins Foundation	Mr. and Mrs. Robert K. Spinner	Annie E. J. Wells Fund of The Minneapolis Foundation
Roman Melamed, MD	Richard Perkins	Sports & Orthopaedic Specialists, PA	Wert Family Foundation
Metropolitan Mechanical Contractors	Susan M. Petersen	Dee and Gordy Sprenger	M. Jean Wert
MG Charities	Piper Family Fund II of The Minneapolis Foundation	Stephanie A. Staebell and the family of Roger A. Leone	Penny Wheeler, MD and The Honorable Margaret Chutich
Dr. Mark and Sara Migliori	Harry and Mary Piper	Deb and Michael Stein	Whitney Foundation
Minneapolis Heart Institute Foundation	Tad and Cindy Piper	Nancy Stephens	Scott Williams
Minnesota Community Foundation	Becky and Bob Pohlad	Dr. Alexandra Stillman and Dr. Paul Crowell	Women's Health Consultants, PA
Minnesota Epilepsy Group, PA	Eloise and Carl Pohlad Family Fund	Joseph and Pamela Strauss	Dr. Mark and Gina Young
Minnesota Gastroenterology, PA	Ron and Molly Poole	Ruth Stricker Dayton	
Mithun Family Foundation	Octavio and Jody Portu	Susan B. Smith*	
Ray and Mary Mithun	Thomas and Mary Racciatti	Susan Stuart Seiler Family Foundation	
Carolyn and Carl Mohn	Rahr Corporation	Synergy Surgicalists, Inc.	
Marti Morfitt and Patrick Weber	Rahr Foundation	Taher Professional Food Service Management	
Chris and Jack Morrison	Willie and Marquelle Rahr	Bruce Taher and Janis Houston	
	Andrew and Lynne Redleaf	Carolyn Taylor	
	Michael and Brittany Reger	Anita Thompson	
	Scott and Staci Richardson	Jean E. Thomson Foundation	
	Mr. and Mrs. Gordon H. Ritz, Jr.	David and Yuiko Tilford	
	Nat and Mary Robbins		
	Robina Foundation		
	Bill and Marilyn Ryerse		

*deceased



Founders' Society

Thoughtful gifts through bequests, insurance, IRA designations, charitable trusts, gifts of property and other methods offer donors an opportunity to invest in the hospital's future.

Marie Abbott Rushing Slaton*	Mary Ann Constantine*	Mrs. Adolph E. Heins*	Lila M. Lind*
Merriam R. Adams*	Kit Dahl and Deb Hopp	Edward L. Henderson*	Emily C. Lineburg*
Mr. and Mrs. Don* L. Albertson	Martha and John Daniels*	Mr. Leon Henrickson and Ms. Sharon A. Mertz	James Linsmayer*
Frances J. Anderson*	Linnea Danielson*	Jeanette B. Herum*	Mrs. Harriet T. Ludwick
Marie Ankeny*	Angela Dennis*	Mr. and Mrs. Richard L. Hilgers	Ruth Lund Leighton*
Carole and Doug Baker, Sr.	Adeline P. Dervin*	John S.* and Jean M. Holten	Carl H. Lundgren*
Jack L. and Renee Baker	Merle and Leonard Dobbs*	John R.* and Rusty Huff	Mr. Leland T. Lynch and Ms. Terry N. Saario
Linda and Robert Barrows	Dodie Du Toit*	Mr. and Mrs. Hadlai A. Hull*	Mr. Paul A. Lynch
Henry Baumhofer*	Nally E.D. duBois*	Mr. and Mrs. William G. Huttner	William H. Manning
Winifred Bean*	Gerhard and Delores Duesterhoeft*	Kathleen M. Ingerson	Mr. and Mrs. Stanley Marshall*
Ms. Adrian A. Bennett*	William H. Dunwoody*	C. Charles Jackson*	Mr. Robert W. Maynard*
Russell* and Elizabeth M. Bennett	Vaughn W. and Hilda K. Enslow*	Helen L. and Roy F. Jacobson*	Mr. and Mrs. Robert K. McCrea
Theodore W. Bennett*	Mr. Stuart W. Erickson*	Thedora James*	Faeth McGowan*
Louise Benz Plank	Kathy and Bill Farley	Dr. Dawn and Troy Johnson	Mr. Miles W. McNally* and Ms. Carolyn E. Linner*
Paul J. Bilka, MD*	Doris J. Fernandez*	Frank and Beryl Johnson*	John G. and Lois M. McNutt*
Herbert Bissell*	Ms. Emily L. Fuerste	Janice E. Johnson*	Annie and Rich Meyer
Gordon Bowen*	Dorie Rae Gallagher	Lucile Johnson*	Mr. and Mrs. J. Donald Meyer*
Ada Brace*	Richard R. Geyerman	Mary and Dale Johnson	Arlie C. Miller*
Blythe Brenden, Brenden-Mann Foundation	Elaine L. Gingold*	Charles E. King*	John A. Moorhead*
Mr. & Mrs. Conley Brooks, Sr.*	Arlene and John Glynn	Mr. Allan and Dorothy Kjorlie Lee*	Chris and Jack Morrison
Robert Brooks*	Paul Goddard*	Mr.* and Mrs. David A. Koch	Mr. and Mrs. John M. Morrison
John and Doris* Brost	Willard Goltz*	Gerald* and Mary Koos	Mr. William A. Neiman
Dorothy L. Brown*	Mr. and Mrs. Ted Grussing	Maureen Kucera-Walsh and Michael Walsh	Dr. Frederic D. Nemer
Arliss S. Cady*	Mrs. Joyce M. Gudding	Mr. and Mrs. Robert W. Kumming	Jacqueline Nolte Jones*
James and Carmen Campbell	Velva S. Guesmer*	Theodora H. Lang*	Dr. and Mrs. Eugene W. Ollila
Mr. and Mrs. Gary T. Capen	Mr. and Mrs. Robert Guetschow	Florence S. Lasher*	Ms. Adeline M. Oveson*
Susan and Richard J. Chaffee	Margaret Gunderson*	Charlotte C. Lehman*	Glen L. Pasley*
Mrs. Dagny L. Chapman*	Esther E. Haakenstad*	Elizabeth B. and Eugene W. Leonard*	Mrs. Jeanette C. Paul*
	Charles M. Harrington*		Robert and Nancy (Higgerson) Paxton
	Shirley L. Harris*		
	Olga L. and Elmer M. Hauge*		

Arthur F. Perlin*
 Mr. Daniel F. Perschau
 Dr. and Mrs. William
 E. Petersen
 Bernice H. Peterson*
 Michele and
 Jeffrey* Peterson
 Ralph J. Peterson*
 Ruth Plane*
 Dr. David and
 Susan Plimpton
 Mr. Wallace N. Rainville*
 Jean Ramsay*
 Mrs. Elizabeth M. Ringer
 Richard S. Rodgers, MD*
 Marilyn and Bill Ryerse
 Rob and Aly Sayre
 Leone G. Schatzkin*
 Annie M. Scherer*
 Mr. Robert L. Schiesel*
 Adella H. Schroeder*
 Betty F. Silverson*
 Mr. and Mrs. Lee H. Slater*
 Susan B. Smith*
 Ms. Shirley J. Snackenber*
 John J. and Elva* Spillane
 Mr. and Mrs. Robert
 K. Spinner
 Dee and Gordy Sprenger
 Deborah M. Steele
 Mrs. Irene Steiner*
 Mrs. Genevieve Stelberg*
 Victor Swenson*
 Jennifer Syltie Johnson
 and Thomas Johnson
 Mr. and Mrs. Darwin Teeters
 Anita L. Thompson
 Dorothy A. Timm*
 Harriet A. Tourtellotte*
 Gail Toussaint*

Emily Anne Tuttle*
 Mr.* and Mrs. Peter Uyehara
 Howard O. Vaars*
 Javon Vadman*
 Dr. Robert and
 Mrs. Betty Van Tassel
 Ms. Dorothea Vanderwerf and
 Ms. Sandra McCollum
 Mr. Edward Verberg*
 Florence E. Walker*
 Mr. and Mrs. James A. Watson*
 Joyce P. Watson*

Margaret M. Webber*
 Mr. Donald Weesner*
 Mr. Roger Wegner
 Vannita L. Wesely*
 Mrs. Amelia P. Wiley
 Garrett O. Wingreene*
 Lillian Rosemary Wingreene*
 Mrs. Marjorie A. Wood*
 Charles M. Yancy, III*
 Douglas H. Yock Jr., MD
 and Doris E. Yock

**deceased*



Statistical resume



6,181
EMPLOYEES*



1,485
MEDICAL STAFF



32,096
VOLUNTEER
HOURS SERVED

Employees*	6,181
Medical Staff	1,485
Volunteers	611
Total number of volunteer hours served	32,096

MEDICAL EDUCATION

Medical students	90
Residents and fellows	132
Nursing students	460
Others	153

BEDS

Total	631
Cardiovascular	146
Medical/Surgical	181
Mental Health-adult	63
Mental Health-child/adolescent	24
Neuroscience	46
Newborn Nursery	44
Obstetric	68
Orthopedic	64
Rehabilitation	39

PATIENT CARE

Abbott Northwestern General Medicine Associates Clinic visits	4,702
Outpatient encounters	524,107
Inpatient admissions	36,324
Lab tests*	1,811,309
Radiology procedures/scans	295,386
Respiratory care procedures	104,498

SURGICAL PROCEDURES

Inpatient	13,172
Outpatient	10,537
Center for Advanced Endoscopy	3,891
Ambulatory Surgery Center	2,521

EMERGENCY CARE

Visits*	55,646
Level One Heart Attack patients	345

TRANSPLANTS AND ASSISTIVE DEVICES

Organ transplants	52
Heart transplants	14
Kidney transplants	38
Implantable ventricular assist devices	59
Temporary circulatory support/ECMO cases	83

COURAGE KENNY REHABILITATION INSTITUTE

Inpatient rehabilitation	669
Outpatient therapy (physical therapy, occupational therapy, speech language pathology)	41,921
Courage Kenny Rehabilitation Associates / Courage Kenny Psychology Associates	7,511
Community services	6,222
Transitional Rehabilitation Program	186

MENTAL HEALTH AND ADDICTION SERVICES

Inpatient adult admissions	1,690
Inpatient child and adolescent admissions	875
Clinic visits	38,481
Electroconvulsive therapy treatments	1,614



524,107

**OUTPATIENT
ENCOUNTERS**



13,172

**INPATIENT SURGICAL
PROCEDURES**



55,646

**EMERGENCY
CARE VISITS**

MINNEAPOLIS HEART INSTITUTE®

Cardiovascular lab interventional procedures	6,185
Electrophysiology procedures	2,192
Cardiovascular/thoracic surgical cases	1,229
Echocardiograms	45,641
Cardiac CT	40,108
Cardiac MRI	1,590

NEUROSCIENCE INSTITUTE

Intracranial surgery cases	484
Seizure/epilepsy patients	489
Stroke patients	785
Neurodiagnostic studies	2,351
Sleep Lab studies	516

ORTHOPEDIC INSTITUTE

Orthopedic inpatient surgery cases	2,450
Orthopedic outpatient cases	1,551
Joint Replacement surgeries	1,742

PENNY GEORGE™ INSTITUTE FOR HEALTH AND HEALING

Inpatient visits with integrative therapy interventions	4,778
Integrative therapy interventions delivered by RNs at the bedside	3,562
Outpatient Clinic visits*	18,896
LiveWell Fitness Center visits	24,250

SPINE INSTITUTE

All spine surgeries	3,865
Cervical fusions	876
Lumbar fusions	2,853

THE MOTHER BABY CENTER AT ABBOTT NORTHWESTERN AND CHILDREN'S MINNESOTA

Total births	5,082
Sets of twins	170
Sets of triplets	9
Sets of quadruplets	1

VIRGINIA PIPER CANCER INSTITUTE®

Percentage of surveyed patients willing to recommend (Virginia Piper Cancer Institute Clinic)	100%
Surgical clinic visits	5,230
Radiation oncology clinic visits	12,392
Piper Breast Center clinic visits*	5,886
Piper Breast Center mammograms including 3D*	21,328
Piper Breast Center imaging exams and procedures*	13,952

FINANCIAL

Operating revenue	1,248 million
Expenses	1,180 million
Salaries/benefits	635 million
Depreciation	50 million
Supplies	151 million
Other operating expenses	344 million

*Includes Abbott Northwestern – WestHealth in Plymouth

Statement of Financial Activities*

FOR THE YEARS ENDED DECEMBER 2017 AND 2016

	2017	2016
REVENUE, GAINS AND SUPPORT		
Contributions	\$5,985,860	\$7,579,118
Contributions from Allina Health System	70,060	122,523
Special Events Revenue: Net of Direct Benefit Expense of \$286,645 and \$337,216 respectively	702,692	517,834
Investment Return	7,027,883	3,899,530
Change in Value of Split Interest Agreements	23,780	10,176
Total Revenue, Gains and Support	13,810,275	12,129,181
EXPENSES		
Grants and Transfers to Affiliates	10,473,596	10,507,205
Grants to Community Programs	517,476	625,207
Change in Liability, Collateral Agreement	(15,846)	3,219
Total Expenses	10,975,226	11,135,631
NET ADMINISTRATIVE AND FUNDRAISING		
Support from Allina Health System	2,139,854	2,063,000
Administrative	(1,318,439)	(1,293,862)
Fundraising	(821,415)	(778,912)
Total Net Administrative and Fundraising	0	(9,774)
CHANGE IN NET ASSETS		
Net Assets – Beginning of Year	80,789,673	79,805,897
Net Assets – End of Year	\$83,624,722	\$80,789,673

Statement of Financial Position*

FOR THE YEARS ENDED DECEMBER 2017 AND 2016

	2017	2016
ASSETS		
Pledges Receivable, Net	\$4,028,845	\$4,164,786
Due from Allina Health System	1,194,015	–
Notes Receivable	–	–
Charitable Gift Annuity	8,785	30,351
Investments	78,363,681	76,637,554
Beneficial Interest in Charitable Remainder Trust	143,664	143,664
Other Assets	274,119	253,845
Total Assets	\$84,013,109	\$81,230,200
LIABILITIES AND NET ASSETS		
LIABILITIES		
Grants and Other Payables	–	9,947
Charitable Gift Annuity Obligation	5,119	16,950
Long-Term Liability, Collateral Agreement	383,268	413,630
Total Liabilities	388,387	440,527
NET ASSETS		
Unrestricted Net Assets	12,551,636	11,717,571
Temporarily Restricted Net Assets	49,460,584	47,459,951
Permanently Restricted Net Assets	21,612,502	21,612,152
Total Net Assets	83,624,722	80,789,673
Total Liabilities and Net Assets	\$84,013,109	\$81,230,200



Abbott Northwestern Hospital Foundation staff

STAFF

Left to right

Kirsten Yeager,
senior development officer

Laura Narhi,
associate development officer

Anne Langaard,
director of development

Laura Olevitch,
*clinical innovation grants
coordinator*

Andrew McIlree,
senior development officer

Kathy Ingerson,
grants program manager

Nicki Hines,
senior development officer

Deena Bartley,
administrative assistant

Rich Meyer, *president*

Stacy Elsholtz,
executive assistant

MISSION

The Abbott Northwestern Hospital Foundation's mission is to raise, steward and disburse funds for the benefit of Abbott Northwestern Hospital and the communities it serves.



U.S. News & World Report
Nationally recognized in six specialties: cardiology and heart surgery (Minneapolis Heart Institute®); diabetes and endocrinology; geriatrics; gynecology; neurology and neurosurgery; and orthopedics.



Magnet Recognition Program®
Redesignated in 2014 – the Twin Cities’ only adult Magnet-designated hospital.



Commission on Cancer® of the American College of Surgeons
2016 Full Accreditation with Gold Commendation and the Outstanding Achievement Award for the third review cycle in a row – a top honor for accredited programs.

A QUALITY PROGRAM
of the AMERICAN COLLEGE
OF SURGEONS



Certified in 2017 as a **Comprehensive Stroke Center** from DNV GL Healthcare.



The Joint Commission's Gold Seal of Approval® for Advanced Total Hip and Knee Replacement
First in Minnesota and fourth in the nation to earn this 2016 certification.



Allina Health

**ABBOTT NORTHWESTERN
HOSPITAL FOUNDATION**

800 East 28th Street, MR 16509
Minneapolis, MN 55407
612-863-4126

allinahealth.org/anwfoundation