



Architectural Rendering of
Elaine S. Larson Surgical Center



Hearts of Women Event



Tom O'Connor



Elaine S. Larson with Surgical Services Staff

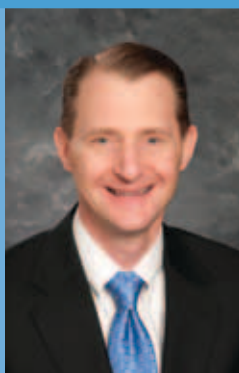
2011 Report to the Community

MINNESOTA'S LEADER IN PATIENT CARE, SERVICE & TECHNOLOGY



UNITED HOSPITAL
FOUNDATION

Letter to the Community



The first few months of 2012 for United Hospital have been a time of renewed focus sparked by new leadership, exciting progress in the Elaine S. Larson Surgical Center Campaign and continued success in the Peter J. King Emergency Care Center.

While there is already some great work behind us, we realize there are many more opportunities and accomplishments yet to achieve this year. As we look further ahead in the year and specifically into the services we want to enhance or bring to our community, we know that none of our efforts are possible without the support of our donors. On behalf of the patients, staff and physicians at United Hospital and the United Hospital Foundation, we thank you for your commitment to the health and well being of the east metro community.

Tom O'Connor Becomes President of United Hospital

Since joining United Hospital as president on Jan. 2, 2012, Tom has been focused on building relationships with physicians, staff and leaders as well as learning United's operational functions. While Tom is not new to health care or Allina, he appreciates that there are characteristics specific to United that will help define his overall goals and vision for the hospital. See page 2 for more on Tom O'Connor's professional and personal background.

Elaine S. Larson Surgical Center Campaign

Construction planning has begun for the Elaine S. Larson Surgical Center at United Hospital. See page 1 for the construction timeline and the latest updates regarding this campaign.

Peter J. King Emergency Care Center

While the need was never doubted, it is still remarkable to see the impact the Peter J. King Emergency Care Center has made in the community in its first full year of service. See page 3 for details on the number of cases, wait times and other enhancements to patient care.

As you can see, there is a lot to be proud of at United Hospital. Our hope and goal is to ensure that you continue to see and appreciate the tremendous value your support brings to the health of the communities United Hospital serves.



Top to bottom:

Tom O'Connor

President,
United Hospital

Duke Adamski

President, United
Hospital Foundation

Jack Ritt

Chair, United Hospital
Foundation Board of
Directors

Tom O'Connor

President, United Hospital
Executive Vice President of
Allina Hospitals & Clinics

Duke Adamski

President, United Hospital
Foundation

Jack Ritt

Chair, United Hospital
Foundation Board of Directors



Architect's rendering of new surgical rooms

Renovation Begins to Create New Elaine S. Larson Surgical Center



Construction will begin this spring on the Elaine S. Larson Surgical Center at United Hospital. The work to completely rebuild United's operating rooms is expected to be finished in the fall of 2013.

The Elaine S. Larson Surgical Center Campaign has a goal of \$18.5 million. In 2011, the campaign marked a major milestone with the donation of the lead gift by Elaine S. Larson of St. Paul.

Rebuilding the entire operating room area on the second floor will take place in phases so that surgeries will continue throughout the process, explained Richard Schreiner, United's director of facilities management. As one section of the surgery center is completed, staff will begin to use it and renovation will proceed in the next area.

Schreiner noted the receiving area for patients and families will be expanded, creating a welcoming, comfortable atmosphere. The crowded Doctor's Lounge also will be expanded.

Renovation is needed so that United can provide the most advanced setting for surgery, which has changed

considerably since the current operating rooms were built in the 1970s. Minimally invasive surgery and robotic surgery require more staff, more equipment and more room to store the range of equipment needed.

On average, a current operating room is 350 square feet. The 15 new operating rooms will be 600 to 650 square feet for general, orthopedic and cardiac procedures and 750 square feet for rooms for neurosurgery and robotic surgeries. Each operating room will have 200 square feet of storage. In addition, the renovation will improve computer technology, lighting, and the scheduling and flow of patients and staff.

In 2011, nearly 16,000 surgeries were performed at United. A robust surgery program is integral to many medical programs at United and essential to the hospital's financial health.

To support the Surgical Center Campaign, please contact United Hospital Foundation at 651-241-8022 or at unitedhospital.com/unitedfoundation.



Tom O'Connor

United Hospital Welcomes Tom O'Connor as New President

Tom O'Connor became president of United Hospital on Jan. 2, 2012. As system vice president of Allina Hospitals & Clinics, he also has leadership of Allina Medical Transportation, Allina Community Pharmacies and River Falls Area Hospital.

O'Connor said that his goals for United will center on these areas: patient safety and health; the patient experience and satisfaction; meaningful workplace experience for physicians and staff; and growing United's services.

O'Connor came to United from Mercy Hospital in Coon Rapids, where he had been president since 2007 and also was a senior vice president with Allina. His career at Allina started in 1997, when he led six owned and eight managed rural hospitals as vice president of operations for Allina Regional Health Services.

As corporate vice president of operations for Allina, O'Connor led the administrative redesign and system-wide financial improvement necessitated by Allina's split with Medica Health Plan in 2002. He then served as president of St. Francis Regional Medical Center in Shakopee until 2007.

O'Connor's career in health care management began in Florida and Georgia, where he served at HCA hospitals in Tallahassee, Panama City, and Atlanta. A Minnesota native, O'Connor has master's degrees in health services administration and business administration from the University of Minnesota and a bachelor's degree in economics/finance from St. Olaf College in Northfield. O'Connor and his wife Jo have three daughters and live in Inver Grove Heights.

"I look forward to meeting donors and working with them and the foundation board of directors to ensure that United has the resources and talent to provide the highest level of care," O'Connor said. "Donors play an essential role in keeping United at the forefront of medical care."

New ED Makes Impressive Gains in Serving Patients



United Hospital's new emergency department is helping more patients, faster.

The Peter J. King Emergency Care Center opened in April 2011 in renovated space, with an array of improvements in caring for patients.

United's emergency department (ED), one of the east metro area's busiest, served 9 percent more patients in 2011 compared to 2010, for a total of 47,000.

On average, patients waited only five minutes from arrival until they were escorted to a treatment room. Then, they saw a physician in an average of 15 minutes, a statistic that ranks United very favorably among EDs in Minnesota and the nation, said Steve Horstmann, emergency department director.

Overall, patients save about 40 minutes in their emergency visits, compared to the previous ED. Surveys indicate patients are significantly more satisfied with their ED experience, Horstmann noted.

The new ED offers services to provide the right care quickly:

- Equipment for CT scans, X-rays and ultrasounds
- 27 treatment rooms (double the previous number) and six treatment rooms for mental health patients
- A separate urgent care area
- Greater capacity to respond to a major emergency in the community

The staff and physicians follow protocols to start care quickly for people who are having heart attack or strokes. These measures also showed improvements, he noted. For example, the number of patients over age 30 who received an electrocardiogram in less than 10 minutes climbed to more than 70 percent in the new facilities. In the former ED, this was only 32 percent.

"United expanded the ED so that we could serve the community better," Horstmann said. "Our statistics for 2011 show we're accomplishing that."

United's Emergency Department Equipment is Helping Patients in Africa

Medical equipment from United's former emergency department is now being used in the capital city of Uganda. After the Peter J. King Emergency Care Center opened in 2011, United donated its old equipment to Hope in the City, a Minnetonka-based charity. Hope in the City sent the equipment to Mulago Hospital, which is a 1,700-bed facility and the only hospital in Kampala, Uganda.

Daniel Foley, MD, Leaves a Legacy at United



Daniel Foley, MD

Daniel Foley, MD, United Hospital's vice president for medical affairs, retired in February 2012 and ended a distinguished career with United.

For nearly 30 years, Dr. Foley has been instrumental in guiding United's development as a premiere specialty hospital. With his leadership and patient-focused approach, United has developed key programs including the Nasseff Neuroscience Center, Nasseff Heart Center, and the new Peter J. King Emergency Care Center.

"Dan has been a mainstay of clinical leadership at United and Allina for years," said Penny Wheeler, MD, chief clinical officer for Allina Hospitals & Clinics. "His incredible knowledge base, sense of organizational history, and commitment to the best supports for caregivers and optimal care for patients are not easily replaced. He will be missed."

As a physician, Dr. Foley is board-certified in emergency medicine, family practice, and medical toxicology. Dr. Foley served as United's medical director of emergency medicine from 1984 to 1988. Later, while he served as an administrator, he also chose to work as an emergency department physician at United every Wednesday and one Saturday a month. In 1998, the United Hospital Foundation honored Dr. Foley with the Service to Humanity Award.

Dr. Foley received his undergraduate degree from Creighton University in Omaha and his medical degree from the University of Parma in Italy. He completed residencies in anatomic and clinical pathology at United Hospital's Miller Division, in cardiovascular pathology at United's Jesse E. Edwards Registry of Cardiovascular Diseases, and in family practice at North Memorial Medical Center.

Fluent in Italian, Dr. Foley has maintained connections to Italy and its health care system. Throughout the years he consulted with Italian officials on health care and taught emergency medicine in Italy.

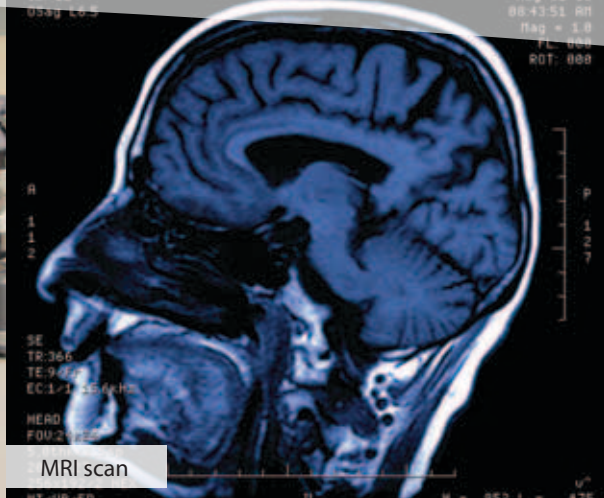
Dr. Foley also dedicated himself to community service. Since 1985, he has served on the Citizens' Board of the Minnesota Pollution Control Agency. The nine board members are appointed by the Minnesota governor and regulate Minnesota's environment. Dr. Foley has served as chair and vice-chair of the board and currently heads the Environmental Review Committee. As a physician, he has provided scientific leadership to interpret how issues before the board affect public health and has helped others understand technical information.

Another aspect of Dr. Foley's community involvement is his service with the Minnesota Army National Guard. From 1977 to 1992, he served as a flight surgeon. In 1982, the U.S. Army National Guard awarded him the Valley Forge Cross for valor. Dr. Foley had subdued a gunman who fired into a St. Paul restaurant where he was eating lunch with colleagues and family members.

"Dan's leadership has made a crucial difference in achieving the medical excellence we have at United today," said Duke Adamski, president of United Hospital Foundation. "He will be deeply missed by so many of us."



da Vinci Surgical System



MRI scan



Magnetoencephalography

United Hospital Technology Highlights

Major investments in technology keep United Hospital at the forefront of providing the high-quality care our community expects.

Robotic-Assisted Surgery

Robotic-assisted techniques are changing the way surgery is performed. United is taking a leadership role in providing this technology and training surgeons to use it. During the first quarter of 2011, United had the second-highest number of robotic-assisted surgeries among Minnesota hospitals.

Surgeons use advanced technology called the da Vinci Surgical System to perform robotic-assisted surgery. United has two such systems, purchased with funds from the United Hospital Foundation.

Using a da Vinci system, the surgeon uses a console to direct four robotic arms that hold micro-instruments and a miniature camera. This technology gives surgeons increased precision and flexibility and greater reach. Advantages for patients include small surgical incisions, shorter hospital stays and faster recovery times.

United recently acquired a da Vinci Skills Simulator for robotics training, which allows surgeons to practice in a virtual environment.

Robotic-assisted surgery has many applications in gynecology, and United has taken leadership in this area with its da Vinci Epicenter for Women's Health and Gynecology. This center, one of only 23 in the U.S., offers surgeons training in the depth, comprehensiveness, and best practices of the da Vinci system.

MRI Technology

Magnetic resonance imaging (MRI) technology used during surgery also is a recent addition to United's operating rooms. Intraoperative MRI allows for highly precise MRI images to be available to the surgeon and staff as surgery proceeds, instead of moving the patient from surgery to perform the MRI.

United's 3T MRI moved in 2011 to the Peter J. King Emergency Care Center so that emergency patients can receive MRIs more quickly.

Deep Brain Stimulation

United's Nasseff Neuroscience Center offers high-tech care in a number of areas. For example, United's Deep Brain Stimulation Program for Movement Disorders is among only four in Minnesota to offer deep brain stimulation (DBS).

DBS involves surgery to implant a medical device, much like a pacemaker, that delivers electrical signals to specific areas in the brain. DBS is a proven therapy to improve motor function in Parkinson's disease patients and those with essential tremor and/or dystonia (involuntary muscle movement).

Magnetoencephalography

United's magnetoencephalography (MEG) is non-invasive technology that aids in the pre-surgical evaluation for epilepsy and brain tumor patients. MEG is used to identify the area of seizure onset and to map the location of brain functions.

LEARN HOW THIS MERCEDES-BENZ COULD BE YOURS

United Hospital Foundation

Original MSRP \$141,000



© Daimler AG / Mercedes-Benz USA, LLC

Visit United Hospital Foundation's website and learn how this 2004 Mercedes-Benz SL600 could be yours

Customized features include:

- Valued at \$141,000 in 2004
- One of only 1,073 SL 600s sold in the USA in 2004
- 2 passenger, V12 coupe roadster
- Panorama roof with sunshade
- Hardtop convertible
- Sport package
- Automatic transmission
- AMG-design sculpted lower body work
- Pristine condition, well maintained
- Mileage 33,950
- Estimated value \$42,000



Use your smart phone to scan this code and be taken to the webpage.

Or visit our website for more details
www.unitedhospital.com/unitedfoundation

The 2012 Service to Humanity Physician Honoree

The United Hospital Foundation is proud to announce the 2012 Service to Humanity physician honoree. The Service to Humanity Award is presented to individuals or groups associated with United who have demonstrated selfless dedication and exemplary leadership in improving the health and welfare of St. Paul residents and communities we serve.



Mary Elizabeth Dunn

Mary Elizabeth (Beth) Dunn is a physician with United Neurosurgery Associates. She has a special interest in selective posterior rhizotomy, stereotaxic brain surgery, brain and spinal cord tumor, spinal cord surgery, epilepsy surgery and pediatric neurosurgery.

Mark Your Calendar for the 2012 Service to Humanity Gala

Join us September 29 at this year's Service to Humanity Gala

The United Hospital Foundation's Gala will bring together more than 1,500 people at the Saint Paul RiverCentre to raise funds that benefit United Hospital and the St. Paul community.

This fabulous evening includes a signature martini reception, silent and live auctions, gourmet dinner, car raffle, awards ceremony and dancing to music by the legendary music group, the Seville's.

Since 2003, the Gala has raised more than \$10 million to benefit these programs at United: the Nasseff Neuroscience Center; the Peter J. King Family Health Center; the Peter J. King Emergency Care Center; and the Elaine S. Larson Surgical Center. This year's proceeds will benefit the surgical center expansion campaign. The gala ranks seventh out of 25 metro area fundraising events in gross revenue.

Your help is needed with the live and silent auction

Every year more than 600 items are donated to the live and silent auction by individual donors, corporations and local businesses. If you are interested in donating or soliciting items for the silent auction, review the categories below for examples of auction items. For delivery or drop-off, please contact the foundation at 651-241-8022.

- Live Auction (luxury cruises, European trips)
- Art or Theater (tickets to the Ordway, Minnesota Orchestra, paintings)
- Dining/Catering Events or Wine/Liquor (restaurant gift certificates)
- Children's Items (clothes, electric cars or other toys)
- Home Décor/ Entertainment/Kitchen/ Electronics (cookware, creative theme baskets, cell phones, miscellaneous)
- Health, Beauty and Fitness (salon/spa gift certificates or beauty baskets)
- Jewelry (necklaces, earrings, bracelets)
- Lodging/Travel/Trips/ Transportation (donating timeshare or vacation home for a week or hotel stays)
- Sporting/Outdoors (sports memorabilia, sporting event tickets or outdoor/ camping items)

Your auction donation will ensure a fun and successful event.

Service to Humanity Gala

Auction Donation Form

Saturday, Sept. 29, 2012 | St. Paul RiverCentre | 5:30 pm.

Please complete the auction form below and return to United Hospital Foundation by **September 4, 2011**. Our deadline for the program listing is also **September 4**. If you have any questions, please call us at 651-241-8022. You may also fax this form to 651-241-5420. Thank you.

Donor name (individual or company) _____

Contact person (if different from above) _____ Phone _____

Cell phone _____ E-mail _____

Address _____ Fax _____

City _____ State _____ Zip _____ Solicitor name _____

Donated item with description

Auction category _____ Expiration date? ☐ No ☐ Yes _____

Estimated or actual value: _____ (each) x _____ = \$ _____ ☐ Cash ☐ Check donation \$ _____

Exclusions and/or restrictions? (if travel related, vacation home or other): _____

Item for donation: ☐ Has been donated ☐ Will be donated on (date) _____

I/we as signed below agree to donate the above item(s) or services to United Hospital Foundation, a not-for-profit and tax-exempt organization for the Service to Humanity Gala on Saturday, Sept. 29, 2012.

Donor signature _____ Date _____

Proceeds benefit the Elaine S. Larson Surgical Center at United Hospital.

United Hospital Foundation | 333 North Smith Avenue | Saint Paul, MN 55102 | 651-241-8022



**UNITED HOSPITAL
FOUNDATION**

Service to Humanity Gala

Pledge Card

Saturday, Sept. 29, 2012 | St. Paul RiverCentre | 5:30 pm.

SPONSORSHIP LEVELS

PREMIER SPONSOR I — \$50,000+

- Unlimited seats and dedicated tables
- Choice seating
- Ad and dedication to honorees in program
- Significant company advertising during event
- Designed company logo in program
- Company logo on our website with link to your site

PREMIER SPONSOR II — \$25,000

- 30 seats and dedicated table
- Prime seating
- Ad and dedication to honorees in program
- Company advertising during event

PREMIER SPONSOR III — \$10,000

- 20 seats and dedicated table
- Select seating
- Ad and dedication to honorees in program
- Company advertising during event

DINNER SPONSOR — \$5,000

- 10 seats and dedicated table
- Ad or dedication to honorees in program
- Limited company advertising during event

AWARD SPONSOR — \$3,500

- 10 seats
- Logo in program

SPONSORSHIP

☐ \$3,500 ☐ \$5,000 ☐ \$10,000 ☐ \$25,000 ☐ \$50,000 ☐ \$50,000+

Individual Seats

☐ Seat @ \$195 each x _____ = \$_____ (*\$145 is tax deductible per seat)

Guest name _____

Table of 10 ☐ Other \$ _____ (outright donation)

☐ \$1,800

Dedication to Honoree

☐ \$100/name with message (write message on the back of this form)

PAYMENT OPTIONS

- ☐ Check enclosed (Make checks payable to United Hospital Foundation)
- ☐ Credit card: ☐ Visa ☐ Mastercard ☐ Discover ☐ American Express

Card number _____ Expiration date _____

Name (on card) _____ Phone _____

Company _____

Address _____

City _____ State _____ Zip _____

Cell Phone _____ E-mail _____

Signature _____ Date _____

Mail to: _____

United Hospital Foundation

333 North Smith Avenue

Saint Paul, MN 55102

651-241-8022

unitedhospital.com/unitedfoundation

Proceeds benefit the Elaine S. Larson Surgical Center at United Hospital

DEADLINES:

GALA INVITATION

Submit form by June 25 to be added in the gala invitation.

GALA PROGRAM

Ads and logos are due August 20 for the gala program.

GUEST NAMES AND AUCTION DONATIONS

Submit guest names and auction donations by September 4.



UNITED HOSPITAL
FOUNDATION



Georgia Taggart, MD

Through the Eyes of a Hospitalist

During a hospital stay, whether it is a few hours or days, patients and visitors may interact with a variety of doctors, nurses, specialists and other non-clinical hospital staff members. “Through the Eyes of...” introduces the different care providers and staff members to help explain the role they play in the care provided at United Hospital.

This article focuses on the role of a hospitalist as explained by Georgia Taggart, MD, lead physician of the United Hospitalist Service.

What is a hospitalist?

Hospitalists at United Hospital are doctors who provide in-hospital care 365 days a year. The formal name of this group is the United Hospitalist Service (UHS) of the Allina Medical Clinic.

What do hospitalists do?

Since UHS doctors are in the hospital, we can respond quickly to any medical needs the patient may have. We can also arrange for a specialist to consult on a person’s care if that becomes necessary.

For most patients, care is provided by the same UHS doctor each day. However, depending upon the person’s length of stay in the hospital and whether or not the stay overlaps a change in the UHS rotation, it is possible to be seen by several UHS doctors. In that case, the doctor who has been attending the patient will thoroughly explain his or her medical information to the doctor who takes over next.

UHS doctors only attend to patients’ needs while they are in the hospital.

How does the hospitalist connect with the patient’s primary care physician?

During the patient’s hospital stay, the UHS doctor serves as the primary physician. The UHS doctor attends to the patient’s hospital care, answers questions and coordinates discharge plans.

During the hospital stay, the UHS doctor is in touch with the patient’s primary care physician to discuss treatment plans and consultations by specialty physicians, if necessary. Together, we work as a team; the hospitalists care for patients at the hospital and keep their primary care physicians informed of their condition.

When the patient is discharged from the hospital, a copy of the discharge summary, test results and medical records will be sent to the physician at the hometown clinic. The person’s care is returned to the primary care physician.

Depending on the individual’s outpatient medical needs, a specialist also may provide care.

If patients have questions about UHS, who do they talk to?

Patients in the hospital should talk with their UHS doctor about any questions or concerns. For non-patient care questions, call the UHS administrative office at 651-241-8451.



Courtney Baechler, MD, MS

United Heart & Vascular Clinic Offers New Prevention Program

My Assessment and Personal Prevention Program (MAP³) is a new clinic offered at United Heart & Vascular Clinic (UHVC), the cardiology practice at United Hospital.

The clinic offers an individualized, detailed review of a person's health and wellness. The clinic's philosophy is based on evidence showing that serious medical problems can be prevented or reduced by adopting a few basic health habits.

The clinic is located at UHVC's office on the campus of United Hospital. At the first appointment, the patient will meet with these specialists:

- **UHVC Cardiologist:** 40-minute appointment to focus on what it takes to be as healthy as possible. Includes physical assessments to measure risk and evaluation of behavioral choices.
- **Nutritionist:** A 60-minute comprehensive evaluation of eating patterns, emphasizing how to eat to feel well.
- **Exercise Physiologist:** A 30-minute session to assess the patient's activity level and ways to maximize it. No exercise or test is involved.

The first appointment will last about 2-1/2 hours. These three specialists evaluate the patient's health and prepare a risk assessment, including any medical problems they discovered.

At the next appointment, a UHVC nurse practitioner and the patient will discuss the assessment. With this information, the patient is encouraged to take action and set goals to improve his or her health. Referrals will be provided for any medical issues that would require additional follow-up.

Next, MAP³ helps the patient stay on track with the health goals. Among the tools available to assist the patient in making steady progress are an online interactive program, exercise coaching and additional nutritional counseling.

The medical director for the MAP³ clinic is Courtney Baechler, MD, MS, a UHVC cardiologist. Appointments are available by calling UHVC at 651-292-0007.

2012 United Hospital Foundation Events

United Hospital Golf Classic

July 30

White Bear Yacht Club in White Bear Lake

3M Senior PGA Championship

July 30-August 5

Tournament Players Club in Blaine

Service to Humanity Gala

September 29

St. Paul RiverCentre in St. Paul

Thank you for supporting the programs and services of United Hospital through event sponsorships. For more information, visit unitedhospital.com/unitedfoundation or call 651-241-8022.

DONOR PROFILE: Beverly Calmenson



Beverly Calmenson

Beverly Calmenson and her family feel a connection to United Hospital. She and her late husband Cal have significant ties to United as donors and patients.

The family's ties to United date back to the late 1960s, when Beverly's father Nathan Thorman was cared for at Miller Hospital. (Miller consolidated with St. Luke's Hospital in 1972 to form United.)

Late in his life Cal developed lung and

heart problems and received care from specialists at United, including internist James Quaday, MD, and pulmonologist James Flink, MD.

Beverly recalled a day when Cal had been admitted to United. The family had gathered in his room as he settled in. A nurse came into the room, looked at Cal, and rushed out. The nurse returned with Dr. Flink, and they whisked Cal away as the family watched with surprise. Although family members hadn't noticed it, the nurse promptly recognized Cal's poor breathing. A medical team quickly fitted him with a breathing apparatus.

The experience of having a nurse who was so alert to a subtle change in Cal made a big impression on the Calmensons. They established the Cal Calmenson Pulmonary & Cardiac Education Fund at the United Hospital Foundation. It provides grants to nurses so they can attend educational conferences and receive state-of-the-art training. "We never got to thank that nurse, or even find out who she was," Beverly said.

Beverly and Cal attended many of the foundation's Service to Humanity Galas. Year after year, they invited family and friends to enjoy the gala with them.

In recent years Beverly has sponsored a table so that United employees can attend the gala at no charge.

Beverly continues to see physicians who are associated with United and feels comfortable at the hospital. "I can't picture myself at any other hospital," she explained.

The Calmenson family has been part of the St. Paul business community for more than 70 years as owners of the Tractor Implement Supply Company (TISCO). Cal's older brother, Ben, started the company in 1937, selling replacement parts for tractors from the trunk of his car. Cal joined the firm in 1950, and the brothers began to expand the business. While Ben ran the headquarters in St. Paul, Cal traveled the country to build the distribution network. The business was sold in 1999.

After Cal's death in 2009, Beverly and her daughters Robyn and Susan set to work to establish the Calvin and Beverly Calmenson Family Foundation. The board of directors represents the family's three generations; the youngest member is Beverly's granddaughter, Alana Alch.

The Calmenson Family Foundation makes donations to organizations that are significant to the family, including United Hospital Foundation and the Jewish Community Center (JCC) in St. Paul. In 2011 the Calmenson family contributed to United's Nasseff Heart Center and the Elaine S. Larson Surgical Center Campaign.

The JCC has special significance for Beverly, since she served as its first woman president from 1972 to 1974. The foundation also supports the Lupus Foundation of Minnesota in memory of Robyn, who died last year from complications of the disease.

Beverly said it's important to support charitable organizations that will improve the community. "These organizations are stepping up to the plate to help people, and they need our help to do it. We need to assume that responsibility. I'm so proud of the work that we are doing through the foundation."

BOARD MEMBER PROFILE:

Terry Myhre



Terry Myhre

Terry Myhre brings to the United Hospital Foundation Board of Directors an entrepreneur's skills in helping people grow through education.

Myhre, who joined the board in December 2011, is president and owner of the Globe Education Network (GEN). The Woodbury-based private education company operates schools in 25 communities, spanning five states. GEN enrolls about 13,000 students and includes well-known colleges: Globe University, which has 10 campuses in Minnesota, Wisconsin and South Dakota; and the Minnesota School of Business, with 10 Minnesota campuses.

GEN also encompasses the Institute of Production & Recording, Minnesota School of Cosmetology, Duluth Business University, Benchmark Learning, and Broadview University, which has five campuses in Utah and Idaho.

Myhre started his business career as a computer programmer. At the same time his father Helmer was the admissions director at Globe College, which had 100 students at its campus in St. Paul. After the owner of Globe died unexpectedly in 1972, Myhre and his father bought the company. Both Globe College and the Minnesota School of Business, which the Myhres purchased in 1988, were founded in the 1800s to teach practical business skills.

The Myhres worked steadily to expand educational programs, degrees and campuses. In the 1990s and 2000s their colleges added two-year associate degrees, then bachelor's and master's degrees. Programs focus on business, creative media, legal sciences, technology, cosmetology, fine arts and health care. From 2008 to 2010 alone, the company opened 15 new campuses.

Today, Myhre and his wife Kaye lead GEN, working with their five adult children.

Myhre gains satisfaction from the students who attend a GEN college to jump-start their careers. "In many cases, our students are the first in their families to go to college," Myhre explained. "Often they graduated from high school, tried college, and it didn't work. Now they're in their late 20s, married with a family. They come back to school because they want to earn more and support the family. These are very dedicated students."

Graduation ceremonies become emotional when students tell their stories, Myhre said. "There's not a dry eye in the place, let me tell you."

As he looks ahead, Myhre understands that the need for post-secondary training will grow as members of the huge Baby Boom generation retire. "Training quality people is a huge area for health care and other fields to deal with," he noted.

Myhre has several connections to United. His colleague Jack Ritt chairs the foundation board. "Jack and I had been discussing my joining the board for a while. Now, I'm learning more about how the board operates and how I can help."

He also appreciates United from a patient's viewpoint. In the last five years, Myhre was hospitalized at United twice. Both times, he came away highly impressed by the staff and high quality of medical care. "I've always known that United was the best hospital in St. Paul."

Prevention Moves to the Forefront in New Health Care Environment

The Federal Health Reform legislation passed in 2010 is filled with new benefits, rules, penalties and projects spread throughout 10 years. While some elements in the reform law are now in place, many provisions go into effect gradually throughout the next several years.

Many patients and community members have asked questions about how the new law affects them. Below are some of the major highlights:

- Coverage will expand to 32 million individuals by 2019 through public program expansions, an individual mandate, an employer mandate and other private sector health insurance reforms.
- Health Insurance Exchanges will be formed in each state by 2014 where individuals and small businesses can purchase market-based health coverage.
- Cost savings will be achieved through reduced reimbursement rates to health care providers and payment reforms to help pay for the coverage expansions.
- Insurance industry regulation includes a requirement for plans to offer an essential benefits package, provide dependent coverage for children up to age 26, prohibit lifetime limits and prohibit pre-existing condition exclusions.

Hospitals to incorporate more prevention efforts

The legislation has resulted in a changed state of health care in which hospitals are paid more on how effectively they help patients avoid hospital stays and emergency visits rather than on the number of services provided. In response, hospitals are being asked to re-examine their role in helping patients maintain overall health and well-being outside the hospital setting. Innovative approaches focused on preventive efforts, especially those related to chronic conditions, will need to be developed to help decrease a person's need for hospitalization. These efforts will also require that patients take even more responsibility for their health.

Community engagement plays a vital role in prevention and wellness

The community engagement work of Allina Hospitals & Clinics plays an important, supportive role for hospitals as health care reform moves further along. The overarching goals and objectives of Allina's community engagement strategy include improving the health of the communities we serve and developing a culture and reputation as a compassionate, trusted community partner. Through Allina's new volunteerism and charitable contributions program, United supports local, health-related nonprofit organizations to optimize the health of our communities.

Allina and United are also working with community-based nonprofit organizations and health experts at the state and local levels to develop and support community health improvement programs. Such efforts include the six-week wellness program Power by the Hour developed to help kids take steps toward healthy living. Sponsored by Allina and in partnership with regional schools and community groups, the Power by the Hour curriculum offers nutrition and exercise fundamentals to children in grades K–6. The message is that the choices we make every day affect our physical and mental well-being. You can learn more about Power by the House at Childhood Obesity Prevention section of allina.com/community.

Become an Active Participant in Your Care

United Hospital encourages patients to maximize and enhance the care you receive with these three easy steps:

1. Talk with us and ask questions

Patients should talk to their doctor or nurse if they have questions about their care. If you do not understand why a test is being given or are confused about a procedure or medication, do not be shy; ask about it.

2. Share your family's health history

Sharing your family's health history is one of the most effective tools to help care providers assess and identify the genetic and hereditary conditions for which you may be at risk. If these can be identified, preventive efforts may be possible.

3. Follow through with care plans

Your personal future health care needs and costs may be reduced if you follow out-of-hospital care plans, including follow-up appointments, nutrition, medication, and other components.

Lending a Helping Hand in the East Metro

Providing health and wellness support to underserved communities is a well-established commitment for United Hospital staff members. Every year, several charitable, social service and other organizations throughout the metro area benefit from the time and talents shared by staff members. Below is a brief listing of some of these organizations:

- American Cancer Society
- American Red Cross
- Big Brothers Big Sisters
- CommonBond Communities
- East Metro Project Homeless Connect
- Listening House
- Neighborhood House
- Ronald McDonald House
- Second Harvest Heartland
- St. Paul Public Schools
- Women's Advocates

Thank You for Making Free Bikes 4 Kidz a Success



With tremendous support from community members and staff, United Hospital, as part of Allina Hospitals & Clinics, distributed more than 4,000 gently used bikes to underserved children in the Twin Cities metro area in December 2011.

In addition to the bikes, children were fitted with new helmets and received safety education. Thanks to Jim Kowalski and Kowalski's Markets for providing fruit as a snack for children at United's bike giveaway. He is a United Hospital Foundation board member. On behalf of the children, thank you to everyone who donated a bike and volunteered their time distributing or fixing bikes.

Supreme Court Decision

The U.S. Supreme Court reviewed the constitutionality of the federal health reform bill in March. The two major issues being debated are the individual mandate (the requirement that all individuals have health insurance) and the Medicaid expansion (the requirement that states cover all individuals under 138% of the federal poverty level). A ruling is expected during the summer.



Celebrating the Hearts of Women

On February 22, United Hospital Foundation hosted an English tea at The Saint Paul Hotel to celebrate American Heart Month and bring awareness to heart disease. Over 60 women attended the event to learn about risks and facts of heart disease and the programs and services of Nasseff Heart Center.

The speakers for the day were Courtney Baechler, MD, MS, of United Heart & Vascular Clinic (UHVC), Jennifer Thorson, heart attack survivor, Sue Moores, nutritionist from Kowalski's Markets, and Kris Coleman, manager of Milton M. Hurwitz ExerCare Fitness Center.

United Hospital and UHVC are proud to rank in the top 10 percent of hospitals in the nation for opening blocked arteries in the heart quickly. The faster a patient's arteries are opened, the greater chance for reducing heart damage and recovering successfully. This is just one of many remarkable achievements that showcase the quality partnerships, dedicated staff and state-of-the-art techniques that make the Nasseff Heart Center a state and national leader in heart care.





Kim Kretschmer, center, leads a BabyCafé session.

babycafé of United Hospital

Baby Café: Expert Advice on Breastfeeding

Every week, women and their infants gather at a church social hall in St. Paul to talk about parenthood, babies and breastfeeding. It's called Baby Café, a free community service sponsored by United Hospital.

Baby Café offers women an opportunity to get expert advice on breastfeeding in an informal atmosphere. The expert is Kim Kretschmer, a certified lactation consultant who works in United's Breastfeeding Resource Center. Kretschmer works individually with each mother-baby duo, answering questions or concerns about breastfeeding and often observing a feeding.

Baby Café adds another layer to the Birth Center's broad services that promote breastfeeding, Kretschmer said. "We want Baby Café to be the place in the community where breastfeeding is normal. Baby Café is for anyone throughout the entire

breastfeeding experience, including pregnant women, regardless of whether the woman gave birth at United."

When things don't go right for mothers and babies, Kretschmer's advice at Baby Café has been crucial in connecting families with medical resources.

Baby Café meets at St. Luke Lutheran Church, 1807 Field Ave., in St. Paul's Highland Park area. Hours are Wednesdays, noon to 2 p.m. Occasionally, Baby Café is closed or starts late due to church events. To confirm the Baby Café schedule, please call 651-241-5088.

United's Baby Café is the first one in the Midwest. Baby Cafés started in the United Kingdom, and there are more than 100 worldwide.



Jessie Schwartz and her son, 1 week-old Jeffrey, attend BabyCafé.

United Hospital 2011 Facts and Figures



Every number tells a unique story of caring. Every day, the physicians, nurses, volunteers and staff at United Hospital play a vital role in our community, touching thousands of lives.

Hospital Admissions	24,496
Emergency Department Visits	47,298
Patient Days	100,507
Average Daily Census	275
Newborn Deliveries	3,514
Surgery Cases	15,959
Licensed Beds	546 beds 40 bassinets
Individuals Employed:	1,807
Medical Staff Members	1,003
Nurses	1,289
Volunteer Hours	50,875

2011
UNITED HOSPITAL FOUNDATION
Year in Review



Your contributions make a difference! We would like to share with you how your support has contributed to foundation programs and services.

2011 Accomplishments:

- Opening of the Peter J. King Emergency Care Center
- Campaign launched for the Elaine S. Larson Surgical Center
- Funded a Bi-Plane X-ray System
- Outfitted the River Falls Area Ambulance Service with refrigerators to cool supplies and medication for post-cardiac arrest induced hypothermia
- Grand opening of the Goff and Boysen Memorial and Honoring Garden

Service to Humanity Gala

\$1.35 million raised

3M Championship

\$566,667 raised

Golf Classic

\$145,000 raised

Proceeds from the events benefit the Elaine S. Larson Surgical Center Campaign



UNITED HOSPITAL
FOUNDATION

United Hospital

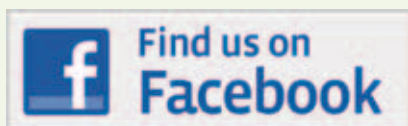
Top Ranked: *U.S. News & World Report* Best Hospitals

U.S. News & World Report named United Hospital as one of the Best Hospitals in Minneapolis/St. Paul. United was also recognized for 10 specialties.

Recognizing
Excellence



Stay Connected with United Hospital



Show your support for United Hospital by joining us at our official Facebook page at facebook.com/UnitedHospital. Become our friend, hang out with other supporters, and get health tips, news and updates from United.

Online Giving

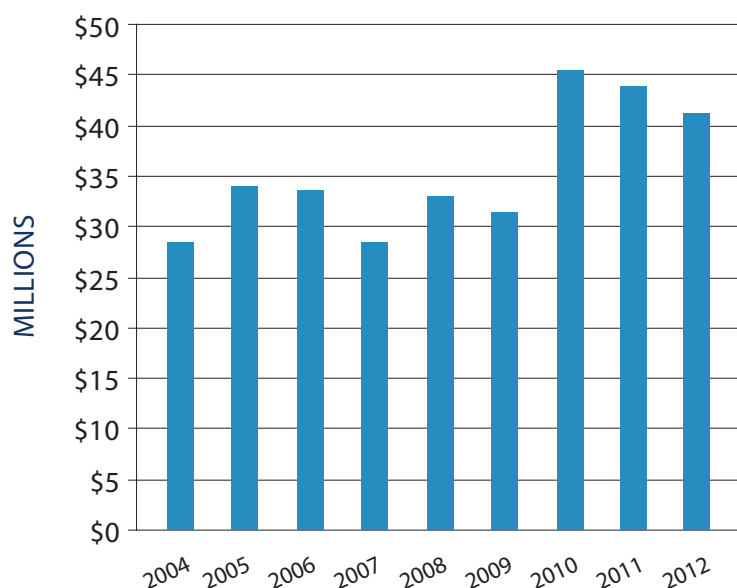
United Hospital Foundation news, events, publications and online giving options are posted at unitedhospital.com/unitedfoundation.

To access the secure and protected online giving page, visit unitedhospital.com/foundation, click on the "Give Now" button in the left-hand navigation bar and complete the form. It's that easy.

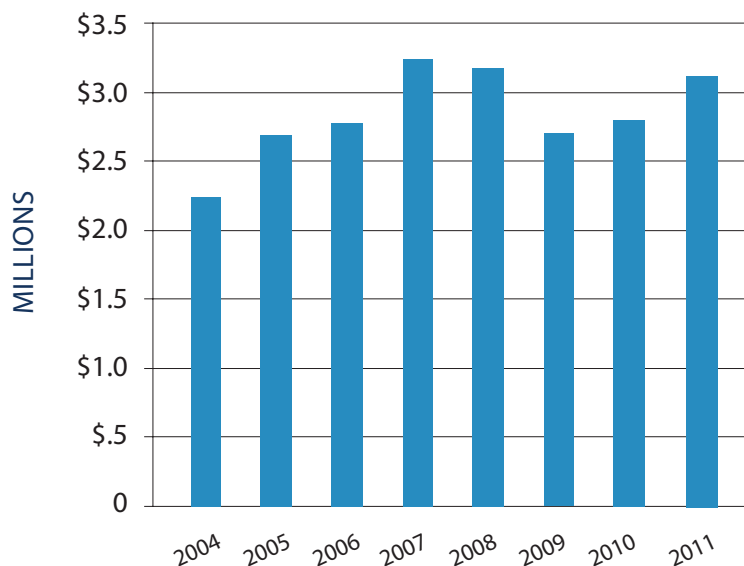
Your gift is tax deductible, and 100 percent of your gift will support the program or service to which you direct your gift.

2011 Financial Summary

ASSETS AT BEGINNING OF YEAR



ANNUAL GIVING



It is important that every not-for-profit organization is in compliance with all of the regulatory agencies that are responsible for monitoring their activities.

We are pleased to announce that we are 100 percent compliant.

In 2011, the United Hospital Foundation completed the following compliance audits:

- Federal IRS audit
- CliftonLarsonAllen, LLP Audit
- Internal hospital audit

You can feel confident that members of our board of directors are excellent stewards of your donated money.

2011 Financial Summary

Corporate Matching Gifts

We wish to thank the following companies that match individual contributions to the United Hospital Foundation:

Agribank, FCB

American Express Foundation

Ameriprise Financial

ARCH

Computer Associates

E-Funds Corporation

General Electric Company

GMAC-RFC

IBM International Foundation

ING Foundation

Johnson & Johnson

McKesson Foundation

Saint Jude Medical Inc.

Securian Foundation

TCF National Bank

Thrivent Financial for Lutherans

Travelers Inc.

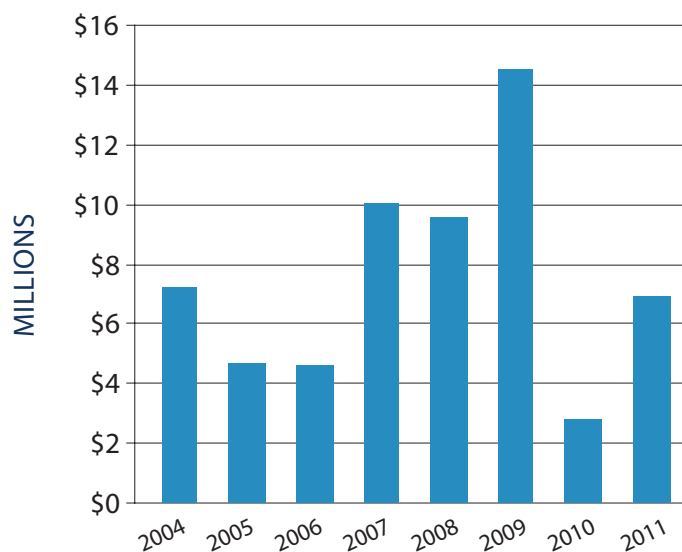
Truist

US Bancorp Matching Gift Program

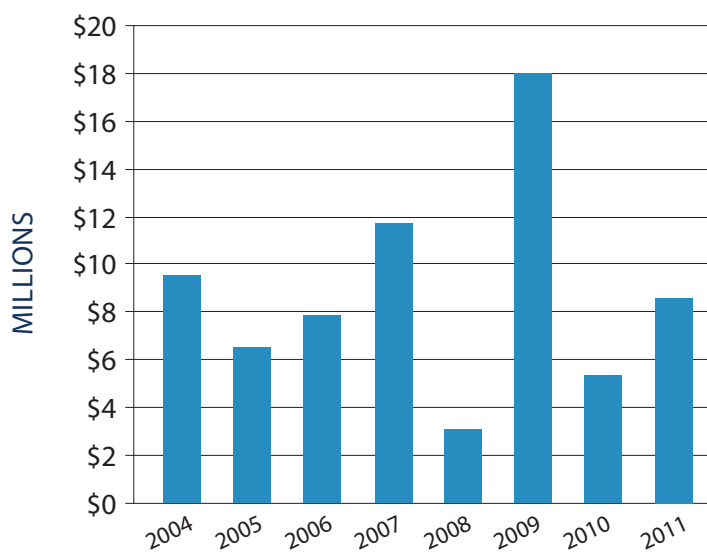
Xcel Energy Foundation

Please check with your human resource department to find out about your company's matching gift policy.

TOTAL CONTRIBUTIONS

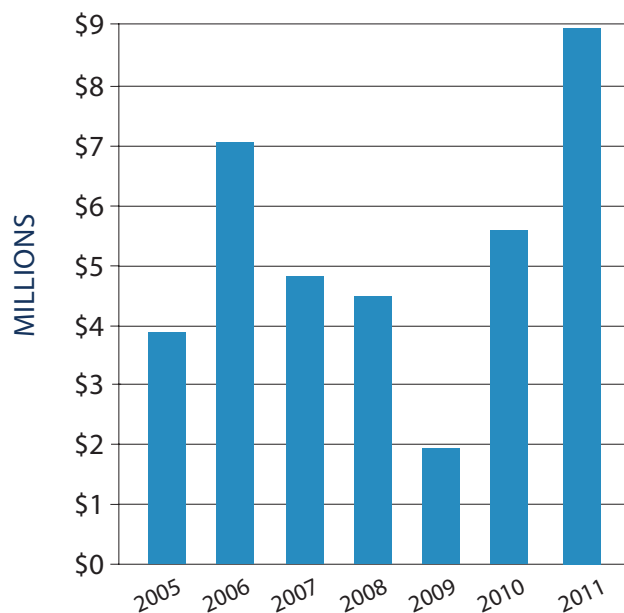


TOTAL INCOME

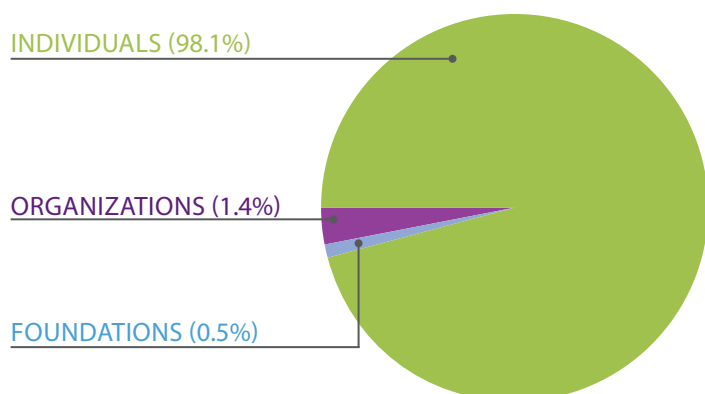


2011 Financial Summary

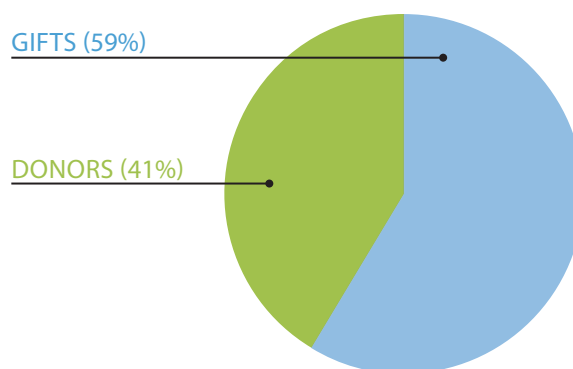
GRANTS AND ALLOCATIONS



SOURCE OF 2011 DONATIONS



SOURCE OF 2011 DONATIONS



2011 United Hospital Donors

The following pages pay tribute to all those who supported United Hospital through donations to the Foundation. The Diamond, Emerald, Sapphire, Platinum, Gold, Silver and Bronze categories reflect life-time cumulative donations to the Foundation. The remaining

categories reflect cumulative gifts of \$100 to \$4,999 to the Foundation between Jan. 1 and Dec. 31, 2011. Together in 2011, 4,603 gave \$7,045,803 to make a difference in the lives of patients and families we serve. It is with great appreciation that we recognize them.

Diamond (\$1M+)

3M Championship
3M Company
3M Foundation, Inc.
Allina Foundation
The Bentson Foundation
Arthur G. Driscoll Trust
Edwards Memorial Trust
Goldman, Sachs & Company
John and Dolores Holl Estate
Hubbard Broadcasting Foundation
King Capital Corporation
Elaine S. Larson
McGough Construction Company, Inc.
McGough Foundation
John Nasseff and Helene Houle
Peter J. King Family Foundation
The Saint Paul Foundation

Emerald (\$500k+)

Allina Hospitals & Clinics
Associated Anesthesiologists, P.A.
Carol A. Bierbrauer
F.R. Bigelow Foundation
The Driscoll Foundation
The Lawson Family
Nasseff Mechanical Contractors, Inc.
Jack and Mary Ritt/Ritt Family Foundation
Sunrise Investments LLC
United Hospital Gift Shop
United Hospital Medical Staff

Sapphire (\$100k+)

AGA Medical Corporation
Andersen Corporate Foundation
Hugh J. Andersen Foundation
Katherine B. Andersen Fund
Mr. and Mrs. Sidney Applebaum
Mrs. Harvey O. Beek Estate
Glen and Harold Bend Foundation
Otto Bremer Foundation
Mr. and Mrs. Calvin B. Calmenson
Calmenson Family Foundation
Cardiac Surgeons of St. Paul
Charlotte Janssen Interim Trust

Bruce F. Church Estate
Merry and Michael DeCourcy
Mr. and Mrs. W. John Driscoll
East Metro Radiation Oncology Associates, PLLC
Dr. and Mrs. Jesse E. Edwards
Mr. and Mrs. David R. Frauenshuh
Elsie Geiss Estate
George G. Mairs Family Fund
Michael T. Goff
Greater Twin Cities United Way
Hardenbergh Foundation
Mrs. Margaret Harmon
Clara Louise Harris Estate
Nancy Ottis Harris Estate
Marshall and Elizabeth Hatfield
HDR Architecture, Inc.
Mr. and Mrs. Louis Fors Hill
Louis W. and Elsie Hill, Jr.
Ruth and John Huss/Huss Foundation
Russell S. King
Knutson Construction Services
Komen Breast Cancer Foundation
James G. Lindell
Mrs. Samuel (Ruth) Lipschultz
Mardag Foundation
The Estate of Wyllene Pearson Marks
The McKnight Foundation
MEDICO Life ProAm Golf Tournament
The Medtronic Foundation
The Elena Melius Foundation
John and Karen Meslow
Metris Companies, Inc.
Minnesota Department of Children, Families and Learning
Minnesota State Department of Health
The John M. and Susan Morrison Family Foundation
Mrs. Virginia L. Mullaney and Mr. Frank C. Mullaney
Lorraine C. Murphy
NEI Electric
Northwest Area Foundation
Mr. and Mrs. John G. Ordway, Jr.
Our 365 Share More
Lewis and Annie F. Paper Foundation

Partners for Violence Prevention
PGA Golf Course Properties
Carl and Eloise Pohlrad Family Foundation
Shirley J. Pond Estate
Prom Management Group, Inc.
Pulmonary & Critical Care Associates, P.A.
Russell and Dorothy Ragon
Ramsey County Warrant
Paul and Irene Rifkin Estate
Clayton L. Robinson
The Rodman Foundation
Carol F. Andersen and William H. Rubenstein
Saint Jude Medical, Inc.
St. Paul Radiology, P.A.
St. Paul/Ramsey County Children's Initiative
Sears Imported Autos, Inc.
Securian Foundation
Ann J. Fee Appert Shiely
Gertrude R. Shiely
State of MN, Department of Finance
Ms. Elvera Stauffacher
Summit Orthopedics, LTD.
Travelers Foundation
United Heart & Vascular Clinic
United Hospital Administration
UnitedHealthcare Corporation
Betty Jane Walen

Platinum (\$50k+)

Duke Adamski
Sarah J. Andersen and Christopher Hayner
Dr. and Mrs. Kit V. Arom
ATS Medical, Inc.
Barbara and Dan Balik
June and Sidney Barrows
Barbara Bentson
Boston Scientific Corporation
Mr. and Mrs. Robert H. Bratnober
Mr. and Mrs. John Brodie
The Bush Foundation
Martin and Esther Capp Foundation
Mr. Robert H. Chandler

Communications Mid-America
Ideacom
Community Employment Partnership
Community Shares of Minnesota
Corval Group
Doherty Rumble & Butler, P.A.
Mr. and Mrs. Carl B. Drake, Sr.
Employees of Ecolab
Mr. and Mrs. Richard A. Engen
EPIC Systems Corporation
Falls & Nyhusmoen Construction, Inc.
David Feinberg
Felhaber, Larson, Fenlon & Vogt
Mina Fergestad
John B. Goodman
Grotto Foundation Inc.
John G. and Alice L. Harrison Family Foundation
HealthEast Foundation
HealthPartners
Anna M. Heilmaier Charitable Foundation
Dr. Todd M. Hess and William Tricker
Stan and Doris Hill
Hospital Pathology Associates, P.A.
The HRK Foundation
Mr. and Mrs. Robert E. Hunstad
Jasc Software
Craig and Patricia Jilk
Mr. and Mrs. Lynn W. Johnson
Nasser and Yvonne Kazeminy
Dr. Jerone and Penny Kennedy
Knight Foundation
Jim and Mary Anne Kowalski
Kraus-Anderson Construction Co
Richard Leven Trust
Bill and Sybil Lipschultz
Mrs. Jean R. Ljungkull
The Harvey Lubov Charitable Lead Trust
Medtronic, Inc.
Merrick Community Services
Minneapolis Cardiology Associates
Minnesota Center for Crime Victims and Services
Minnesota Epilepsy Group, PA
Minnesota Medical Foundation

Minnesota Wire
Mrs. John Miller Musser
Mr. and Mrs. Arthur J. Nasseff
Art and Sue Nasseff
Mickey Nasseff
Olmsted County
The Dwight Opperman Foundation
Opus Properties LLC
Frank E. and Seba B. Payne Foundation
Peoples Electric Company
Jay and Rose Phillips Family Foundation
George Power, Jr. Estate
RBC Wealth Management
Darwin R. and Geri Reedy
Robins, Kaplan, Miller & Ciresi, L.L.P.
Thomas J. Rose, M.D.
St. Paul Radiology Foundation
Sun Orchard
Thomson Reuters
Mr. and Mrs. Edward R. Titcomb, Jr.
Robert D. and Roberta R. Topness
United Hospital Auxiliary
Wells Fargo Bank Minnesota, N.A.
Xcel Energy, Inc.
Bart and Kay Zibrowski

Gold (\$25k+)

3M - Medical Surgical & Skin Health Divisions
Charles F. Alexander, III, M.D.
Associated Bank
Aventis Pharmaceuticals
Kenneth W. Baran, M.D.
Martin and Ramona Barrett
Baxter Healthcare Corporation
Drs. Margaret M. and J. Randolph Behars
Berwald Roofing Company, Inc
Big Top Liquor Store
Rachel Hill Boechmann
Steve and Lynette Bryant
The Gargill Foundation
Jeffery Carlson
Mr. and Mrs. Hollis E. Cavner
Central Parking System

City of St. Paul - Dept. of Planning and Economics
Coldwell Banker Burnet Realty
Stephanie Cook
Dr. Victor and Brenda Corbett
Deluxe Corporation Foundation
Olivia Dodge
Mary E. Dunn, M.D. and Gregory F. Cotterell, M.D.
Ecolab, Inc.
Curtis E. and Debra D. Enestvedt
Kathryn E. Farniok, M.D. and Erik Englebretson
First National Bank of Hudson
James Flink, M.D. and Diane Uecker Flink, R.N.
Frauenshuh Healthcare, LLC
Garelick Family Foundation
Bruce, Karen, and Charlie Gershman
Goodin Company
Sherrie and Gregory A. Granrud, M.D.
Jeff Hyer/Greenhaven Printing
Mary Livingston Griggs and Mary Griggs Burke Foundation
Gross-Given Manufacturing Company
Richard B. Guthrie, M.D.
Sherrie and Gregory A. Hegg, M.D.
Helen Sperry Lea Foundation
Hobbit Travel
Dr. Ken and Linda Holmen
Roy Hope, M.D.
Joseph Hreha
Mary L. Huberty
Dr. and Mrs. Milton Hurwitz
Intuitive Surgical, Inc.
Marc S. and Judy Isaacs
David B. Jones, Jr. and Julie A. Jones
Dr. and Mrs. Kenneth L. Jue
Mrs. James E. Kelley
Norma L. Larson
Lawson Software
Mr. and Mrs. Charles L. Leavitt, Jr.
R. C. Lilly Foundation
Lockridge Grindal Nauen P.L.L.P.
Gertrude Maiden
The Thomas G. Mairs and Marjorie P. Mairs Fund
Maslon, Edelman, Borman & Brand
Teresa and Bob McMahon
Gary Melius
Merck & Company, Inc.
Metropolitan Medical Center Foundation
Metropolitan Urologic Specialists, P.A.
Michaud, Cooley, Erickson & Associates
Michael and Elizabeth Miller

Zondal and Esther Miller 1996
Charitable Remainder Unitrust
Minnesota Gastroenterology, P.A.
Minnesota Oncology Hematology, P.A.
Minnesota Wild Hockey Club
Mark and Joan Mishek
Lucille Moeller
LeVonne Mulrooney
Dean K. Murray
Edmund C. and Mary Ann Newman
Northern Lights League
Northwest Airlines Inc.
Northwestern Bell
Gene and Bonnie Nugent
Douglas Olson, M.D.
Fane W. and Corie A. Opperman
Vance and Darin Opperman
John G. Ordway
Frederick M. Owens, Jr., M.D. and Lucy T. Owens
Richard Pettingill
Piper Jaffray, Inc.
The Potish Family
Rosella Qualey
Ramsey County Human Services
Resources for Child Caring
T. Jay Salmen
John P. and Linda A. Schroepfer
Dr. Richard D. and Mrs. Barbara W. Shank
Cy and Vi Sheehy
The Shepard Family Foundation
Mr. and Mrs. Sam Singer
Mrs. Vernon D. E. Smith
Sodexo
Spectranetics
Starkey Hearing Foundation
Dr. Scott W. and Patricia S. Tongen
Treasure Island Resort and Casino
Dr. and Mrs. Victor H. Tschida
U.S. Bank - St. Paul
United Properties-Northmarq
Waconia Farm Supply
Thomas and Dawn Walrath
West Seventh Community Center, Inc.
Patricia Whitacre
Cornelius W. Wiens
Lloyd Willbrandt
Ned W. Windmiller
Mr. and Mrs. Teddy Wong

Silver (\$10k+)

Abbott Laboratories
Abbott Northwestern Hospital
Paul M. Abbott
Dr. Stuart Adler and Carol Kast

Adolfson & Peterson Construction
American National Bank & Trust
Dr. Kurt Amplatz
Andersen Consulting
Lee R. Anderson Family Charitable Foundation
Mary Anne Anderson
Nancy J. Anderson
Applebaum Companies, Inc.
Arctic Cat
Gerald and Virginia Armstrong
Charles and Marjorie Avoles
Terrence L. and Jeanne M. Bailey
Linda and Robert Barrows
Bassford Remele
Estate of Helen Bauer
Peter R. Bauer
Peter and Janet Beaulieu
Hamon T. Becken
Jonathan T. Berget, M.D.
George S. Bergh
Eugene and Geraldine Berwald
John and Andrea Bien
Phillip J. Bifulk
Mrs. Alexandra O. Bjorklund
William Bogenberger
Boston Scientific
Briggs and Morgan
Richard Brody, M.D. and Margaret Flynn
Dr. Sandy and Cory Buckman
Luella Buetow
Edwina and Raymond Burrows
BWBR Architects, Inc.
Jerome G. Byrnes
Mr. and Mrs. Ben B. Calmenson
Mary D. Cannon
Centocor
Children's Hospitals & Clinics
Church of St. Anne
The Cities' 97 FM
City of Saint Paul
Clara Claussen
Frieda Claussen
Dr. Charles Cliffe and Mrs. Elizabeth Cliffe
Tony, Kathy, Kimberly and Andrea Clinch
Commonwealth Electric of Minnesota, Inc.
Patricia A. and Jim Cooksey
Bert Cross
Daly, Corbett, Ogden, Abid & Olive
Mr. and Mrs. Bruce E. Davis
Mrs. Edwin M. Davis
George Dejmek
Deloitte and Touche
Neil M. Derechin, M.D.

Dennis Desender
Dr. and Mrs. Mark T. Destache
Kathleen DiGiorno
District Energy St. Paul, Inc.
Doody Mechanical
Mr. and Mrs. Thomas A. Dosland
Downtowner Woodfire Grille
Harry Drake
DS&B, Ltd.
Drs. Rene P. duCret and Susan J. Roe
Dr. and Mrs. David N. Dunbar
Eagle Elevator Corporation
Ecolab Foundation
Mr. and Mrs. G. W. Egermayer, Jr.
Dr. Blake and Mary Jo Elmquist
ExerCare Fitness Center
Peter E. Fehr, M.D.
Dr. Dan and Lyn Foley
Stephen J. Foley
Clarence Frame
Fredrikson & Byron, P.A.
Benjamin Fuller, M.D.
Harry and Jeanne Gallaher
Gastroenterology Consultants, P.A.
Genentech, Inc.
General Mills Foundation
Gillette Children's Specialty Healthcare
GlaxoSmithKline
The Arthur and Constance Goodman Family Foundation
Mr. and Mrs. Stanley B. Goodman
Goodrich Foundation
Lisa A. Gray
Mr. and Mrs. Pierson "Sandy" Grieve
Mr. and Mrs. Reynolds Guyer
Elias and Grace Haddad
Dr. and Mrs. James W. Haight
Dr. Dennis and Joyce Halbe
Jerome M. and Marice L. Halper Family Foundation
Mrs. Marice L. Halper and Mr. Robert Rubenstein
Bruce E. Hanson
Doug and Marie Hanson
Pat and Al Hanzal
Jennifer Harrington, M.D.
The Harris Foundation
Robert Haugan
Dr. and Mrs. Charles W. Hauser
HealthPartners
Priscilla A. Hedberg
Mr. and Mrs. David F. Herr
Hill-Rom
Mr. and Mrs. A. D. Hulings
David D. Jaeger, M.D.
Charlotte and Martin Janssen
Dr. and Mrs. Randall K. Johnson

Dr. and Mrs. Thomas E. Johnson
Thomas H. and Kristen E. Johnson
James R. and Joan Jordan
Ione N. Kadden
Joseph L. Kapla, M.D.
Dr. and Mrs. Douglas B. Ketcham
Key Investment, Inc.
Cheryl Kirchner
Mark J. Kleinschmidt
Mr. and Mrs. Hess Kline
Dr. and Mrs. Joseph J. Klugman
Dr. and Mrs. Thomas A. Koelz
Patrick T. Koller, M.D. and Tammy A. Chiesa, M.D.
Robert J. Kosce
Kowalski's Woodbury Market, Inc.
Gary R. Kravitz, M.D. and Anna E. Schorer, M.D.
Brian K. and Rebecca LaCroix
DeLores L'Allier Houle
Mr. and Mrs. John Lambros, Jr.
Langer Real Estate Services
CliftonLarsonAllen, LLP
Darren Lawson
Le Jeune Investment, Inc.
Mr. and Mrs. Robert Leech
Mr. and Mrs. Larry Lehmkuhl
Roger R. Lenzmeier
Dr. and Mrs. Leonard H. Levitan
Dr. and Mrs. F.B. Lewis
Dr. and Mrs. Charles Lick
Mrs. Drake Lightner
David M. Lilly
Mr. and Mrs. Albert Lindeke, Jr.
Dr. and Mrs. Robert E. Lindell
Linen Effects, Inc.
Links Golf Ireland
Erma G. Lipschultz
Susan L. and Terrance Loushin
Mr. and Mrs. Thomas F. Luse
Lyndale Garden Center
Christy Mader
Dr. and Mrs. Michael T. Madison
Dr. and Mrs. Jeffrey E. Magnuson, Jr.
Mairs and Power, Inc.
George A. Mairs, III
Mr. and Mrs. Edward N. Mansur, Jr.
James Marino
Susan J. Markham
Dr. and Mrs. John Marta
Dr. and Mrs. Reid A. Martinson, M.D.
Mr. and Mrs. Hillard M. Marver
McCarthy Bjorklund Foundation
Theresa T. McCarthy Trust Estate
Thomas and Mary McKeown
McNeely Foundation
Medtronic - Spinal and Biologics
Dr. and Mrs. Eric A. Melum

2011 United Hospital Donors

Dr. Robert L. and Mrs. Charlotte T.L. Merrick
 Rita M. Meyer
 Peter W. Michalowski and Joan Hackel
 Midcontinent Media, Inc.
 Gladys and Rudolph Miller Foundation
 Victoria M. and George E. Miller, M.D.
 Dr. and Mrs. Zondal R. Miller
 Minnesota Life Insurance Company
 Minnesota Sports and Entertainment
 Minnesota Surgical Associates
 Minnesota Twins Baseball Club
 MN Coalition Against Sexual Assault
 Drs. Gerald Moriarty and Patricia Penovich
 Dan and Tammy Mott
 Joseph Murray, Jr.
 The Myers Foundation, Inc.
 Katherine B. Nason
 Steve and Tammie Nasseff
 William K. Natale
 National Speaking of Women's Health Foundation
 Neurological Associates of St. Paul, P.A.
 Dr. and Mrs. Demetre M. Nicoloff
 Mr. and Mrs. Roger F. Noreen
 North Star Bank
 Nursefinders
 Hoyt W. Nye, M.D.
 S. Rhiannon O'Connor, M.D.
 Opulent Vodka
 Mrs. Richard Ordway
 Owens & Minor
 Mr. and Mrs. Kenneth H. Paulus
 PCL Construction Services
 Penn State University
 Mr. and Mrs. Anthony Penque
 Deniz A. Perese, M.D.
 Mary C. Petrack
 Pfizer, Inc.
 Robert J. Plaszcz
 Mr. and Mrs. William M. Podas
 Pope Architects
 Susan K. and Giuseppe Puppini
 Richard C. Radman
 Robert Ratte
 William S. Reiling
 Georgiana S. Reny
 Mary Rice
 Margaret Rivers Fund
 Robert D. Roettger
 Ruth and Norman Rose
 Rosenquist Construction, Inc.
 Mr. and Mrs. Kennon V. Rothchild

Dr. and Mrs. David A. Rothenberger
 John J. Rowan
 Steven M. and Wendy H. Rubin
 Wendy and Steve Rubin Family Fund
 Dr. and Mrs. Timothy J. Rumsey
 Dr. and Mrs. Peter K. Rusterholz
 Mrs. Alan Rusterholz
 Tomi and Jim Ryba
 Saint Paul Infectious Disease Associates
 Anthony Sanneh
 The James Scarpetta Family
 Leonard D. Schloff, M.D.
 Cheryl L. Schreiner
 Richard D. Schreiner
 The Schubert Club, Inc.
 Julianne and Jeffrey Scott
 Chris and Michael Seitz
 Moe and Nazy Sharif
 Mr. and Mrs. Arthur Shuster
 Siemens Building Technologies, Inc.
 Freda Silver
 Kimbri Sorbel
 Maurice and Mitzi Spiegel Fund
 St. Paul Midway Lions Club Foundation, Inc.
 St. Paul Police Foundation
 Elenor Stafstrom
 James and Leslie Studenski
 Frank and Judith Sunberg
 Tapemark Company, Inc.
 Tenet Healthcare Foundation
 Charles Terzian, M.D.
 George and Elise Tesar
 Dr. and Mrs. P. Thienprasit
 Barbara A. Thomas
 Joan and William Thompson
 Victoria A. Tigwell
 William L. Tilton
 Timothy R. Toonen
 The Tozer Foundation
 Mary Lynn Tyler
 United Family Medicine
 United Hospital Alumni Club
 United Medical Specialties
 United Neurosurgery Associates
 University of Minnesota
 University of Minnesota - Department of Radiology
 Upper Midwest Perinatal Assoc. Ltd.
 Uptown Dermatology and SkinSpa
 Stuart B. Utgaard
 Robert A. Van Tassel, M.D.
 Pierce J. Vatterott, M.D.
 Paul and Carolyn Verret
 Hadley Verwest, Jr.
 The Victor Foundation
 Richard A. Volkman

Thomas J. VonRueden, M.D.
 Dr. David M. Wark and Mrs. Mary Ann Barrows Wark
 Dr. and Mrs. Frederick P. Washburn
 Mimi Weinberger
 Diane Weinfurter
 Dr. Russell C. Welch and Brenda Andrewson
 Wells Fargo Foundation Minnesota
 Christopher J. Wendell, M.D.
 Rosemary K. West
 West Suburban Pathology Consultants, P.A.
 Dr. Joseph J. Westwater and Ms. Virginia A. Kraus
 Mr. and Mrs. F. T. Weyerhaeuser
 Thomas A. Wiberg, M.D.
 Jeffrey T. Wicklander
 Mr. Leonard H. Wilkening
 Norb and Karen Winter
 Dr. and Mrs. Bernard J. Worth
 Max E. Zarlring, M.D.

Bronze (\$5k+)

Academy Insulation, Inc.
 Mr. and Mrs. David G. Adolfsen
 Tacoumba T. Aiken
 AirTran Airways
 Mr. and Mrs. Andrews Allen
 Allina Medical Clinic - Administration
 Allina Medical Transportation
 Jean W. Ambler
 American Brain Tumor Association
 American Security Corporation
 American State Bank
 AMGEN
 AMN Healthcare
 Dr. and Mrs. David C. Anderson
 John and Beret Anderson
 Dr. Nathan and Lyndsay Anderson
 Dr. and Mrs. Ross E. Anderson
 Apple Valley Medical Clinic, Ltd.
 Mr. and Mrs. Hash Applebaum
 Mr. and Mrs. Stuart Applebaum
 Associated Obstetricians and Gynecologists, P.A.
 Augsburg College
 Austad's The Golfers' Store
 Axel Newman Family Foundation
 Dr. and Mrs. Walter L. Bailey
 Alan J. Bank, M.D.
 William Barrows, M.D.
 Anthony Bechik
 Maxine A. Becker
 Anita M. Berg
 Dr. and Mrs. Steven C. Bergeson
 Mr. and Mrs. Andy F. Bessette
 Biotronik, Inc.

Bixby Energy
 Blue Cross Blue Shield of Minnesota
 Duane and Jean Bojack
 Norlin G. Boyum
 Lucy W. Brown
 Jimmie L. Browning, M.D.
 Dr. and Mrs. Martin G. Bruhl
 Building Bond Income-UHF
 Mr. and Mrs. Ralph W. Burnet
 Patrick Butler
 David W. Byrd
 Kenneth Caldwell, M.D.
 Candyland, Inc.
 Dr. and Mrs. John Carter
 Chapel Collection Fund
 Dr. Elliot Chesler and Dr. Rosalind Chesler
 Therese Chlebeck
 Rita Clemens-Turner
 Como Park Zoo & Conservatory
 Patrick J. Cook
 Michael J. and Dalloul G. Coury
 A.L. Crump Family Foundation
 Currenttech
 Dain Rauscher Corporation
 Dakota County Board of Commissioners
 Dakota County Financial Services
 Peter Daly, M.D.
 David Hurd Painting
 Mr. and Mrs. Robert J. Davidson
 David Real Estate Services Group, LLC
 Dayton Hudson Corporation
 Angelica D. Della Grazia-Volpi
 Dr. and Mrs. William Derechin
 William F. Diers
 Domain Property Management
 J. Donald and M. Cathy Donahue
 Mr. and Mrs. Ralph D. Ebbott
 Electric Resource Contractors
 Elite Destination Homes
 Larry Elliott, M.D.
 Employee Fund HealthOne
 Julia Endres-Spray
 E. E. Engelbert, Jr.
 Equity Services of St. Paul, Inc.
 Lynn P. Ettestad
 Mr. and Mrs. Leo F. Feeney
 Mary E. Feist
 Sandy Feldblum
 Dr. and Mrs. Davitt A. Felder
 Elizabeth P. Fesler
 Litton E. S. and Nancy Field, Sr.
 Dorothy S. Fobes
 Foley & Mansfield, P.L.L.P.
 Connie J. Foote
 Richard T. Foreman
 Roger Foussard

Evelyn Fredrickson
 The Freeman Family
 Milton Frogner
 Mr. and Mrs. Robert W. Fulton
 James and Mary Gagne Gag
 Mr. and Mrs. Herbert R. Galloway
 The B.C. Gamble & P.W. Skogmo Foundation
 Paul G. Gannon
 Michael D. Garr, M.D.
 Mary Gavin
 Dr. and Mrs. Robert W. Geist
 Anne German
 Dr. and Mrs. Howard D. Gilbert
 Mr. and Mrs. Frank N. Graham, Sr.
 Greater Minnesota Cadillac Dealers
 Warren and Sharon Green
 Greenhaven Marketing Corporation
 Richard S. Gregory, M.D.
 Griggs-Cooper Co., Inc.
 Donald and Shirley Grindstaff
 Paulette Groshens
 Guidant Foundation, Inc.
 Dr. Katherine Guthrie and John Ward
 William M. Gydesen
 H2 Development Inc.
 Haag Family Foundation
 Richard A. and Diane R. Haight
 Donald V. Harper
 Valorie K. Harshe
 Hazelden
 Health Management Systems
 Heart Leaflet Technologies, Inc.
 Lisa Helland
 Bradley A. Helms
 Mary T. Hendrickson
 Joan Herman
 Jim Heuer
 James Hilgert
 Dr. Merle and Annette Hillman
 Homespections, Inc.
 Mr. and Mrs. Raymond Houle
 William Houlton, M.D.
 Gerry and Susan Hughes
 Dr. Craig and Jean D. Humphries
 Louis and Ida Lee Hurvitz
 Hurwitz, Lerner, Butwinick, Wangsness & Nelson
 Brec A. Huseby
 Rose Hutterer
 James T. Hynes
 Intereum, Inc.
 J.B. Hudson Jeweler
 JBL Companies
 Donald Johanns
 Johnson & Johnson
 Mr. D. Ward Johnson, Sr.

The H.S. Kaplan Family Fund of the Minneapolis Foundation
 Everett H. Karon, M.D.
 Pamela A. Ketcham
 Miriam Y. Kim, M.D.
 Dr. and Mrs. David B. Kispert
 Mr. and Mrs. Robert C. Klas, Sr.
 The Klas Family Foundation
 Rosemary Klatt
 Robert C. Knutson
 James J. Kohler
 Dr. and Mrs. Brian M. Krasnow
 Paul Kraus
 Jacqueline M. Krech
 Laurie M. Lafontaine
 Elizabeth A. Lake and Phillip J. Trobaugh, Esq.
 Gerald L. L'Allier
 Daniel L. Larson
 Carol A. Leffingwell
 Dr. and Mrs. Irving J. Lerner
 Lexus of Maplewood
 Lindell Charitable Trust
 Patricia Long
 Allen Lorenz
 Hal and Carol Lyman
 Dr. and Mrs. Richard P. Lynch, M.D.
 Bob and Pamela MacDonald
 Dr. Joseph and Heather Madigan
 Mall of America
 Marriott Corporation
 Marriott Corporation - HealthCare
 Jeanette Maruska
 Master Framers Incorporated
 Mr. and Mrs. Edward O. McBride
 Mr. and Mrs. Ronald R. McCloud
 Arlie Alford McCoy
 Miriam K. McCreary, M.D.
 Thomas P. McDonough
 James and Natalie McGlade
 McKesson HBOC, Inc.
 Audrey C. Mears
 John and Sharon Medjanyk
 Berhardt and Susan Meents
 Pamela M. Melius
 Mellon Global Securities Services
 Michael Mercer, M.D.
 Christopher R. Merz
 Metropolitan OB-GYN, P.A.
 MHC Culinary Group - Morrissey Hospitality Companies
 Mr. and Mrs. Joseph S. Micallef
 Millennium Neurosurgery, P.A.
 David Miller
 David R. Miller
 Patricia S. Miller
 The Minneapolis Foundation
 Minnesota Friends of the Orphans

Moore Business Forms
 Gerald L. Moriarty, M.D.
 Morrison Management Specialists
 William Morrissey
 Mortenson Construction
 Gerald and Carol Mulcahy
 Sally A. Mullen
 Mr. and Mrs. Joe Nasseff
 Lisa M. Nasseff
 Dr. and Mrs. Peter Nasseff
 National Independent Brokers, Inc.
 Dr. and Mrs. Aerial Nelson
 Mr. and Mrs. Brock D. Nelson
 Dr. Scott and Jerilyn Nelson
 Network For Good
 Patricia A. Newton
 Nimis-Newman
 Noel Foundation
 Northern X-Ray Company
 William F. Northrup, III, M.D.
 Northwest Opticians
 Anne P. and J. Kirby Ogden
 Susan Shuman Okie
 Susan H. Olson
 Mr. and Mrs. Stephen A. Osborn
 Palanisami & Associates, Inc.
 Lewis Paper
 Ellen M. Parks
 Partners Healthcare
 The Malcolm M. Pearson Estate
 Drs. Kevin and Alison M. Peterson
 Pittway Corporation Charitable Foundation
 Pool and Yacht Club
 Prairie Properties
 Dr. James M. and Mrs. Constance N. Pries
 PureChoice, Inc.
 R.W.M., Inc.
 William B. Randall
 James W. Reagan
 Ed Regal
 John G. Reiling
 Patricia Reixoux
 Mr. and Mrs. Philip Thomas Resha
 Marty and Susan Richards
 Mr. and Mrs. Robert B. and Kathleen C. Ridder
 Karen A. Ringheim
 Riverview Hospital Auxiliary
 Mr. and Mrs. Peter G. Robb
 Joseph L. Rose
 Burton B. and Berneen R. Rudolph
 Guy Runkle
 John and Patricia Ryan
 The Saint Paul Hotel
 Robert C. Samec
 Jerry Sansby

Sauer Childrens Renew Foundation
 Joseph J. and Sandy Schaaf
 Paul K. Schilling
 Jerome J. Schorr
 Ann and Thomas Schroeder
 Bruce Scott
 Jim Seifert
 Joan Shapiro
 Rosalind Shapiro
 J.L. Shiely Company
 Ronald A. and Norma E. Signorelli
 Dr. Ranjit and Anna Singh
 Marie Slawik
 Smiley, Glotter, Associates, Inc.
 Mrs. Elmer H. Smith
 Soderberg, Inc.
 David and Judith Sonstegard
 Spectacle Shoppe
 Dr. and Mrs. Michael Spence
 Jac Sperling
 Mr. and Mrs. Maurice L. Spiegel
 Sportsman's Warehouse
 St. Paul Linoleum & Carpet Company
 St. Paul Pioneer Press
 The Standard Register Company
 Star Tribune
 Randolph C. Steer, M.D.
 Larry Stern, M.D.
 Debra Stevens
 Arthur and Margaret Stone
 Jennifer Strangis
 Stuart Companies
 SuperValu, Inc.
 Phil Sutherland and Sandy McCaul
 Susan M. Tabor
 TAP Pharmaceutical Products
 Jean M. Teigland and Russ Felkey
 Joseph Tennyson
 Ruemah H. Thompson
 Charlene F. Tieso
 Robin Tieva, Jr.
 Ben Tilsner
 Timco Construction, Inc.
 Dr. and Mrs. Jack L. Titus
 Gary Tournier
 Dr. and Mrs. Steven M. Tredal
 Mr. and Mrs. James L. Trucker
 Truist
 Dr. Michael and Donna Trump
 Kathleen Tuenge
 Cynthia S. Tunncliff
 U.S. Bancorp Matching Gift Program
 Mr. and Mrs. Richard A. Vohs
 Michele Volpi
 Thomas W. Votel, M.D.
 W.L. Hall Co.
 WAF Properties, LLC
 Stephen R. Wagner, M.D. and Teri

L. Wagner
 Janet A. and Donald C. Wegmiller
 The Western Group
 Wildside Caterers
 James R. Wingate
 Jacki and Brad Wings
 Winthrop & Weinstine P.A.
 Wipfli, LLP
 Dr. and Mrs. W. Douglas Wong
 WorkflowOne
 Mr. and Mrs. Michael D. Wurm
 Xerox Corporation
 Dr. and Mrs. Paul T. Yellin, M.D.
 Betty and David York
 Barbara Youngblood
 Merle D. Youngquist, M.D.

Summit Society (\$1,000 - \$4,999)

Aaron Carlson Corporation
 Paul M. Abbott
 Duke L. Adamski
 American Brain Tumor Association
 American Engineering Testing, Inc.
 Lawrence M. Ancrum
 Linda M. Anderson
 Nathan P. Anderson
 Apple Valley Medical Clinic, Ltd.
 Applebaum Companies, Inc.
 Sidney Applebaum
 Arch Insurance Group
 Charles W. Avoles
 Bassford Remele
 Pamela J. Berg
 Steven C. Bergeson
 John P. Bien
 Big Top Liquor Store
 Bio Instruments, LLC.
 Douglas J. Bissler
 Alexandra O. Bjorklund
 Jean M. Bojack
 Boyum & Barends PLLP
 Kristoffer M. Breien
 Briggs and Morgan
 Richard J. Brody
 Steven C. Bryant
 BWBR Architects, Inc.
 David W. Byrd
 Carl Bolander and Sons Co.
 John B. Carter
 Cemstone Products Company
 Central Parking System
 Cobb Strecker Dunphy & Zimmermann CSDZ
 Consumer Justice Center
 Cook Group Incorporated
 Victor A. Corbett
 Carol Corich

Davis Real Estate Services Group, LLC
 Bruce E. Davis
 Kathryn A. DeCourcy Knapp
 Michael Decourcy
 Jean M. Delaney Nelson
 Delta Airlines
 Dennis Brothers Liquors
 William F. Diers
 Kathleen DiGiorno
 District Energy St. Paul, Inc.
 Domain Property Management
 M. Cathy Donahue
 Scott W. Donner
 Downtowner Woodfire Grill
 Debra R. Dullinger
 Ecolab, Inc.
 EESCO - United
 Employee Campaign Special Event
 Richard A. Engen
 Lynn P. Ettestad
 ExerCare Fitness Center
 Ann M. Fankhanel
 Kimberly K. Faust
 Leo F. Feeney
 Foley & Mansfield, P.L.L.P.
 Lyn S. Foley
 Brenda M. Folska-Mercil
 Darren T. Forbes
 Ann Frankhanel
 Fredrikson & Byron, P.A.
 Friedemann Foorde, PLLC
 Eleanora M. Friederichs
 Harry E. Gallaher
 Rozalija Gannon
 Debi K. Geiwitz
 Gilead Sciences, Inc.
 Golfsmith
 Goodrich Corporation
 Andrew W. Gottfried
 Claudia D. Gray
 Lisa A. Gray
 Greater Twin Cities United Way
 Karen M. Gustafson
 Haag Family Foundation
 Patricia A. Hanzal
 Shelly J. Harvey
 Marshall R. Hatfield
 David F. Herr
 Leslie J. Hillman
 Roy E. Hope
 Intereum, Inc.
 ISC Financial Advisors
 Michael K. Johnson
 Alhasan Juhani
 Saed S. Kakish
 Shannon M. Kearney-Coborn
 Jennifer S. Kerr
 Robert C. Klas

2011 United Hospital Donors

Anders M. Knutzen
 Brian K. LaCroix
 Laurie M. Lafontaine
 John W. Lambros
 William Lipschultz
 Jean R. Ljungkull
 Susan L. Loushin
 Carol R. Lyman
 Tommy Lyons
 Mairs and Power, Inc.
 Thomas G. Mairs
 John R. Malone
 Michael L. Mann
 James R. Marino
 Susan J. Markham
 Jeanette C. Maruska
 McCarthy-Bjorklund Foundation
 Audrey C. Mears
 Med-Ed
 Sharon A. Medjanyk
 Medtronic Spinal and Biologics
 Michael S. Mercer
 Merry DeCourcy Studios
 Deborah L. Metzler
 MHC Culinary Group - Morrissey
 Hospitality Companies
 Peter W. Michalowski
 Minnesota Timberwolves FastBreak
 Foundation
 Minnesota Valley Country Club
 Corinna J. Nelson
 Neurological Associates of St. Paul,
 P.A.
 Edmund C. Newman
 Judith A. Nilan
 Oheka Castle
 Ouellette Foundation
 Philip J. Paquette
 Kenneth H. Paulus
 Patricia E. Penovich
 Peoples Electric Company
 Kenneth E. Peters
 Jack B. Petrie
 Robert J. Plaszcz
 Susan K. Puppini
 Razoo Foundation
 Rosemarie Reger-Rumsey
 James A. Ritz
 Paul W. Rogosheske
 Roseville Visitors Association
 Steven M. Rubin
 Tom P. Rusch
 James B. Ryba
 Julie A. Sabo
 Saint Paul Infectious Disease
 Associates, Ltd.
 Deb A. Sapp
 Kari A. Schmitz

Richard D. Schreiner
 Linda A. Schroeffer
 Julianne Scott
 Richard D. Shank
 Norma E. Signorelli
 Kimberli T. Sorbel
 Spectacle Shoppe
 Sherry A. Spence
 Teresa A. Sterns
 Leslie L. Studenski
 Connie K. Swanson
 Steven E. Swanson
 The Arthur and Constance Goodman
 Family Foundation
 The Briggs and Morgan Foundation
 The Medtronic Foundation
 The Minneapolis Foundation
 The Saint Paul Hotel
 ThyssenKrupp Elevator Company
 Tillges Certified Orthotic Prosthetic
 Inc.
 Timothy R. Toonen
 TPC Sawgrass
 Leah J. Tuccitto
 U.S. Bank - St. Paul
 United Family Medicine
 United Properties-Northmarq
 Uptown Dermatology and SkinSpa
 US Bank
 Robert A. Van Tassel
 Verizon Wireless
 Paul A. Verret
 Mary O. Weinberger
 Wells Fargo Bank - Capital
 Management
 Wells Fargo Bank Minnesota, N.A.
 Wendy and Steve Rubin Family
 Fund of the Saint Paul Foundation
 Willis North America, Inc.
 Winthrop & Weinstine P.A.
 Judith A. Wolf
 Teddy Wong
 Zoll Lifevest Corporation

John T. Rogers Society (\$500+)

ABRA Auto Body & Glass
 Donald W. Anderson
 Judith A. Anderson
 Mary E. Androff
 API Group, Inc.
 Mikehal J. Aschittino
 Ravi Balasubrahmanyam
 BAPS Charities
 Robert A. Barbosa
 Martin Barrett
 Edward C. Bather

Margaret M. Beahrs
 David H. Bednar
 Ronald R. Belschner
 Barbara K. Bentley
 Kristen L. Bentley
 Meghan E. Bernard
 Cathy J. Berwald
 Todd Bjorklund
 Shalini Bobra
 David L. Boll
 Ralph G. Bone
 Sarah A. Booth
 Michael Borkan
 Richard J. Bornecamp
 Sandra L. Braun
 Gloria Brodie
 Jimmie L. Browning
 Diane R. Brusius
 Ronald Butchko
 Stephanie F. Callanan
 Sharon A. Carlson
 Chandler and Brown, Ltd.
 Chandler Group
 Danyetta S. Chea
 Chicago Bears Football Club
 Chicago Marriott Downtown
 Magnificent Mile
 Michael J. Ciampi
 Clos Pegase Winery
 Gayle L. Cole
 Community Shares of Minnesota
 Continental Diamond
 Dale Studios
 Joy Lee Davis
 Mark T. Demma
 Dodd Sales and Marketing, Inc.
 Lyle C. Doerr
 Jill R. Dornbush
 Rene P. duCret
 Richard F. Dugan
 Mary E. Dunn
 Jeff H. Eckland
 Rebecca A. Edberg
 Robert D. Eibert
 Lawrence G. Erickson
 Falls & Nyhusmoen Construction,
 Inc.
 Gerald J. Farlee
 Amy E. Ferstenou
 Gerald Fine
 Frederick A. Fink
 Barbara A. Forshier
 Linda M. Funk
 Mary G. Gag
 Bruce Gershman
 Michael C. Gilbertson
 Frances S. Go
 Eleanor M. Goodall

Andrea D. Grehan
 James W. Haight
 Susan C. Haines
 Haldeman-Homme, Inc.
 Robert H. Hamer
 Donald V. Harper
 James A. Hasling
 Thomas Haugen
 Bradley A. Helms
 Hilmerson Safety Services, Inc.
 Lawrence A. Himebaugh
 Dennis A. Homel
 Raymond J. Houle
 Susan Hughes
 Marc S. Isaacs
 Vicki J. Iverson
 Jessica F. Jandric Tickner
 Margaret M. Jaworski
 Donald J. Johanns
 John Rooney Family Charity
 Foundation
 Tracy K. Johnson
 Julius B. Nelson & Son, Inc.
 Joan M. Jungkunz
 William E. Karkula
 A. K. Kastel
 William O. Kenney
 Rebecca J. Ketcham
 Russell S. King
 Deborah L. Klein
 Anthony J. Kotlarz
 Kowalski's Market
 Bonita K. Kuslich
 Lake Elmo Inn
 Lancer Service Auto Care
 Daniel L. Larson
 Linda L. Lasch
 Daniel A. Leclerc
 Bruce A. Leopold
 James W. Lewis
 Lincolnshire Resort Marriott
 John H. Lund
 Thomas C. Lyman
 Sheila A. Lynch-Salamon
 Joseph C. Madigan
 Martin Patrick 3 & I.D. Inside Design
 Robert J. Martineau
 David E. Matteson
 Patrick A. Mazorol
 Wendy M. McCabe
 Robert M. McCarthy
 Sheila S. McDonagh
 Thomas P. McDonough
 James P. McGlade
 Gregory A. McGrane
 Michael J. McGuire
 Gary Melius
 John K. Menoudakos

Merry DDS, PA
 Daniel C. Mott
 Paul F. Mulcahy
 Steve J. Nasseff
 Rosanne Nathanson
 Jason A. Nelsen
 Marcia J. Nelson
 Patricia A. Newton
 Northwest Opticians
 Lisa M. Norton
 Mary E. Nussbaum
 Joette M. Nuyen
 Deborah R. Olson
 Anita M. Ophoven
 Pazzaluna
 Tony A. Pelzel
 Gerald F. Peterson
 Jeffrey D. Peterson
 Linda Phalen
 Amy L. Poppinga
 Benjamin R. Pries
 Brian G. Prokosch
 Janine M. Quitter
 R.F. Moeller Jeweler
 Susan M. Rainey
 Matthew G. Rauenhorst
 Gayle M. Rettner
 Thomas M. Reynen
 Mark E. Robertson
 Richard A. Roessler
 Andrew J. Rolling
 Ann E. Sagnes
 Saint Paul Saints
 Kristina Scheid
 Mary J. Schiltgen Bobzien
 David C. Schoenbeck
 Schullers Tavern
 Schumacher Elevator Company
 Seacrist, LLC
 Douglas P. Seaton
 Security Bank & Trust Co
 Christine E. Sheetz
 Bruce A. Shirley
 Alan R. Siebold
 Barbara J. Slagerman
 Jennifer R. Smith Kristensen
 Gary P. Smith
 Kari L. Smith
 Mark S. Sneider
 Southwest Airlines Charitable Giving
 St. Paul Linoleum & Carpet Company
 Mary L. Suemnick
 Debra S. Suhadolnik
 Michael D. Sullivan
 Jessica Supinski
 Paul Swetland
 Kristina J. Taylor
 James C. Teal

the Reluctant Athlete
William A. Thompson
Kathleen M. Tuenge
Duane H. Turner
Kathleen Tuzinski
Unleash Your Inner Foodie
Viking Electric Supply
Richard A. Vohs
Thomas A. Waddell
Margaret A. Wallen-Friedman
Carolyn L. Walters
Frederick P. Washburn
Lisa E. Waytulonis
Jennifer Weichert
Stephen G. Wenzel
CarieAnn L. Williams
Ned W. Windmiller
Windsor Companies
Jerry E. Womack
Michael D. Wurm
Georgiann Youngdahl Anderson
Georgia K. Zachman
John D. Zellmer
Kenneth M. Zimmerman

Charles T. Miller Society (\$250+)

Aaccent Town Car and Limo
Peter J. Abts
David G. Adolfson
Advanced Dermatology Care
Agribank, FCB
Christopher Allen
Russell L. Allen
American Center for Philanthropy
Kazue Amey
Jason M. Anderson
John W. Anderson
LeAnn M. Anderson
Marvin R. Anderson
Patricia A. Anderson
Susan M. Antol
Cindy K. Archer-Burton
Karen L. Argo
Jennifer C. Baese
Jeanne M. Bailey
Bartlett J. Baker
Estelle R. Baldinger
Nancy L. Bartkowitz
Scott Barton
Julie K. Becker
Belwin Conservancy
Mark A. Benton
Bonfe's Auto Service & Body Repair
Donna M. Boreen
Noelle L. Bortscheller
John J. Boulger

Jake E. Bowar
J. Chris Brandt
Terrie L. Brandt
Patricia A. Brockley
Richard W. Brust
Elizabeth M. Buckingham
Kelsey L. Burggraft
Paul G. Busch
Dolores A. Busher
Candyland, Inc.
Joseph G. Capecci
Christine L. Carlin
Timothy J. Carrigan
Glenda M. Cartney
Kevin Cassidy
Catholic United Financial Foundation
Cynthia A. Chandler
Diane M. Chappuis
Chicago Marriott Suites O'Hare
Mark J. Chlebeck
Butch Ciresi
Ronald T. Clappier
Cheryl L. Cloutier
Cobra Imaging Products, LTD
John M. Coleman
Thomas P. Commerford
Adrian Conley
Gary T. Copland
Kenneth M. Cross
Charles E. Crutchfield
Custom Water Works
Michael O. Dalager
Raymond P. Delpiaz
Peter M. Damico
Marlyn J. Damman
Michelle R. Damon
James A. D'Aquila
Dean Foods
Karl Dedenbach
Virgil R. DeLong
Debra A. Diko
Patricia M. Dillinger
John D. DiSanto
Disney Worldwide Services, Inc.
Kirk R. Doman
Mark G. Drayna
Terri L. Dresen
DS&B, Ltd.
Jennifer L. Duff
Cindy M. Early
David W. Eijnck
Paul A. Ekberg
Robert E. Engel
Betty J. English
Eparchy of Our Lady of Lebanon
Cassandra Erickson
Jim Erickson
Robert J. Etten

Ever Cat Fuels, LLC
Song L. Fawcett
Mary E. Feist
Mary E. Feist
Michael F. Fetsch
Paul M. Floyd
James D. Foley
Melissa T. Fritz
Duncan P. Gallagher
Minda M. Garcia
Michael J. Garvey
Gary S. Koecheler & Associates
Theodore M. Gautsch
Mary Geraghty
Rene J. Gesell
Richard C. Gieske
Mary C. Gisch
Global Construction & Investment
Co. Inc
Angela Y. Goddard
Cynthia A. Godfrey
Marsha C. Gorman
Cole D. Greves
Hampton Inn - Eden Prairie
Edward J. Hanley
Thomas W. Hannasch
Perry R. Hanson
Pamela J. Hargis
William A. Hargrove
Rita Harmandayan
Rebecca K. Hasse
Robert A. Henning
Eldon D. Herum
Rodney M. Heuer
James T. Hickey
Thomas W. Hodnefield
Clifford W. Hoffman
Richard J. Holloway
Thomas J. Hopsicker
Steven J. Horstmann
Delores Houle
Cynthia B. Huber
Vladimir Hugec
Ida Lee Hurvitz
David Husom
Irie Delights Personal Chef Service
Jam Group Inc.
Heather A. Jax
Gregory G. Jeffrey
John Doll Studios
Marsha E. Johnson
Michele J. Juergens
K. R. Kline and Associates, Inc.
Frank D. Kapps
Kare 11
Brent A. Karkula
Kathleen Interiors
Harold H. Katz

KDWB 101.3 FM
Norah J. Kelly
Penny M. Kennedy
Timothy L. King
Laurel J. Kloskin
Gary S. Koecheler
Catherine L. Kordosky
Philip W. Korst
Gwendolyn M. Kosevich
Donald J. Kovarik
Kowalski's Woodbury Market, Inc.
Michael J. Kramer
William M. Kronschnabel
Maureen A. Kucera-Walsh
Byron Kuss
Langer Real Estate Services
David P. Langer
Jeffrey P. Lassig
Helen C. Lattary
Chad Lauf
Cecily A. Lawson
Cynthia Leaf
Rolfe A. Leary
William H. Leary
Roger H. Lee
Thomas J. Lee
David D. Lemke
Jane E. Letourneau
Paul J. Linstroth
Raymond J. Lorenz
Juanita Lovegren
Nakesha N. Lowe
Michael E. Luger
Vicki L. Lunz
Richard Lyons
Barbara M. Malamen
Daniel J. Malecha
Gregory D. Malik
Maplewood Imports
Maslon, Edelman, Borman & Brand,
LLP
Thomas L. Mason
Fred D. Mattila
Joe Mauer
Thomas D. McGurk
McKesson Foundation
James McNamara
Susan Meents
Meghan Doll Photography
Alison E. Mellin
Judith T. Messner
Terrence Mestnik
Metro West Closing Services, LLC
John A. Mickelson
Paula S. Miki
Minke Properties
Minneapolis Marriott City Center
Minnesota Acoustics, Inc.

Minnesota Landmarks
Minnesota Twins Baseball Club
Sharon L. Minns
Wendy J. Molitor
Maurice M. Monahan
Robin L. Moody
Molly D. Mortensen
Margaret Moss
Gerald R. Mulcahy
Murnane Brandt, P.A.
Paul L. Najarian
Averial E. Nelson
Susan K. Nestegard
New Orleans Marriott at Convention
Center
New Richmond Golf Club
Nicholson Family Foundation
Ford J. Nicholson
Jeanne E. Nierowicz
Amy J. Niess
Eileen Nikolas
Kelly J. Notch
Oak Brook Hill Marriot Resort
James E. O'Brien
Howard V. O'Connell
Linda C. Odegard
Judith A. O'Gara
Gary Osterbauer
Owens Companies, Inc
Amy Pahl
John F. Palmer
Park Plaza Hotel - Bloomington
Justin A. Pattee
Amy A. Peltz
Judith Perrault
Heather A. Peterson
Mary F. Pettiford
Kari L. Pfenning
Alice C. Piepgras
Cheryl A. Plourde
Theresa M. Pollnow
Linda R. Pontinen
David M. Potts
Ellie Putnam Brier
Radiance Medspa
Radisson Hotel Bloomington
Kimberly D. Rederth
Karen A. Reigstad
Renaissance Chicago Hotel
Renaissance Schaumburg Marriott
Brian E. Renstrom
Rick Bronson's House of Comedy
Robert Tate Foundation
Estella C. Roberts
Alice F. Robinson
Rodan and Fields Dermatologists
Ron Burg Fine Portraits
M. Jane Ruddy

2011 United Hospital Donors

Mary Ann Russo
 Patricia A. Ryan
 Salon Cheveux
 Salon Ultimo, LLC
 Paula E. Sanan
 Alan G. Sandkamp
 Sarah Kurn Skincare
 Jeffrey J. Scherer
 Frank Schiefelbein
 Linda M. Schloff
 Diane M. Schmidt
 Joseph J. Schottler
 Kathy J. Schowalter
 Elizabeth Schreiner
 William R. Schroeder
 Michelle L. Schroer
 Brian J. Schubloom
 Majken A. Schwartz
 Suzi K. Scott
 Scruples, Inc.
 Virginia L. Serey
 Marianne Shumaker
 Nicole E. Sickmann
 Danielle Sicora
 Karen L. Sipinen
 Smart Circle International, LLC
 Torre C. Smith
 Vicki L. Smith
 John L. Sowieja
 Matthew G. Specht
 Kristine K. Spiewak
 Stacy Roszkowski DDS PLLC
 Sara M. Stimpson
 Nicole E. Stoik
 Patricia A. Suess
 Summit Brewing Company
 Sundara Inn & Spa
 Maryann A. Swayze
 Gregory T. Swenson
 Brian Swiglo
 Systems Management & Balancing
 of Minnesota
 Alex A. Szczepaniak
 Jill M. Tamke
 Robert Teague
 Michael J. Tharp
 The CDC Group, Inc
 The Schubert Club, Inc.
 Jon A. Theobald
 James J. Thomas
 Janet L. Thomas
 Jon V. Thomas
 William L. Tilton
 David C. Tjosvold
 John F. Tocko
 Matt Tofanelli
 Pamela L. Triplett
 Mary L. Tyler

U.S. Water Services
 Diane Uecker-Flink
 United Heart & Vascular Clinic
 Tong D. Vang
 Susan N. Vermurlen
 Ellie Vilendrer
 Bobbi K. Vogt
 Toni Volkmeier
 Thomas W. Votel
 Mary C. Wagner
 Joseph C. Wahlberg
 Leny Wallenfriedman
 Harry M. Walsh
 Jodi J. Welch
 Jennifer L. Weller
 James N. Wells
 Rosemary K. West
 Lonnie A. Widmer
 Leonard H. Wilkening
 Stanley E. Williams
 Karen D. Wilson
 Wine Merchants of Minnesota
 Karen Wiswell
 Jennifer L. Wolf
 Stephen G. Wolters
 Judith A. Wood
 Woodbury Dental Care
 Larry L. Woodbury
 Xcel Energy Center
 Marcia H. Yanz
 Your Enchanted Florist
 Song H. Yu
 Mark Zauhar
 Paul E. Zenner
 Wylie H. Zhu
 Bart L. Zibrowski

1855 Club (\$100+)

Barbara M. Abrass
 Ahmad Abusalah
 Bruce R. Ackland
 Melanie R. Ahlstrom
 Betty E. Ahn
 Aimbridge Hospitality
 Jay A. Alberio
 Naif Aljahdali
 Catherine M. Allan
 Allstar Plumbing LLC
 Carol E. Almquist
 Robert D. Aloisi
 Barry A. Alverman
 American Accounts and Advisers, Inc.
 Ameriprise Financial Employee Gift
 Matching Program
 Patsy L. Amundson
 Leon W. Anders
 Barbara M. Anderson
 Beth W. Anderson

Constance J. Anderson
 Dwight M. Anderson
 James C. Anderson
 Linda A. Anderson
 Linda M. Anderson
 Lowrell R. Anderson
 Marcia A. Anderson
 Myron D. Anderson
 Norman M. Anderson
 Tina M. Anderson
 Cynthia Anderson-Scott
 Colleen M. Andrews
 John R. Andrews
 James M. Anglin
 Lauren Anthony
 Melissa Arfstrom
 Mark A. Arnesen
 Jane C. Arnt
 Ennis Arntson
 Martha A. Arouni
 Arthur Murray Dance Studios
 Jayme R. Artisensi
 Annapurna Arunachalam
 Yemareshet B. Asfaw
 Rajendra Auradkar
 Thomas J. Aurand
 Linda G. Aydt
 Mary A. Ayers
 Marjorie J. Baab
 Janis M. Babcock
 Judie F. Babcock
 Maria E. Babou
 Thomas C. Bagnoli
 Steven J. Bailey
 M. B. Balik
 Tricia Ball
 Paul G. Ballanger
 Jeanette D. Ballman
 Dolores E. Barkley
 Dennis P. Barrett
 John M. Bates
 Kenneth P. Batts
 Marvin E. Bauer
 Donna J. Baumann
 Bruce Beaubien
 Lavonne C. Beck
 Martha M. Becker
 Michael R. Behr
 James H. Beistle
 Elizabeth R. Bejarano
 Patricia S. Belian
 Paul R. Belting
 Robert L. Bement
 Scott Benson
 Margaret E. Bents
 Gwen D. Bernardy-Bauer
 Bruce L. Bernier
 Norman W. Berning

Christopher J. Bernish
 Berry Coffee Company
 James E. Bettendorf
 Cynthia T. Betz
 Jay Beyer-Kropuenske
 Iris Bierbrauer
 Virginia M. Bisanz
 John F. Bischoff
 Doris A. Bisciglia
 Irma L. Bjork
 Mary T. Blackford
 Julie A. Blake
 Thomas G. Bloom
 Daniel K. Bohn
 Edward J. Bohrer
 Suzette Bojanowski
 Michael J. Boland
 Meredith Bollig
 Diane Bonney
 Erin R. Borgersen
 Judith A. Bourland
 Rebecca L. Braden
 Beth A. Bredemus
 Michael A. Breen
 Gerald Breidel
 Darrell N. Breier
 Marit A. Brock
 James A. Brockberg
 Deborah A. Broucker
 Garry L. Brooks
 Dennis R. Brown
 Gaylerd E. Brown
 Lynn M. Browne
 Jacqueline R. Bruggeman
 Susan M. Brustman
 Juliet R. Bryan
 Barbara A. Bryant
 Paul Bryant
 Richard N. Buchman
 Lisa R. Bunting
 Becky J. Burdick
 Lawrence J. Burgart
 Burger Moe's
 Timothy S. Burke
 Lloanna L. Burman
 Dorothea J. Burns
 J. Donald Burns
 James M. Burton
 William A. Buth
 Butterfield's Buttercup Sweets, Inc.
 Marvin J. Cadwell
 Ann E. Caggiano
 Molly K. Calkins
 Camp Bar
 Suzanne L. Campagna
 Jane F. Campbell
 Michael Capistrant
 Capitol Dental Center P.L.C.

Eleanor E. Carbury
 Cynthia D. Cargill
 Wayne W. Carlson
 Daniel L. Carnicom
 Deborah G. Carr
 Leo J. Carroll
 Wallace G. Carson
 Robert A. Casper
 Daniel F. Cassellius
 Jeffrey K. Caswell
 Robert E. Cessna
 Chanhassen Dinner Theatres
 Linda M. Chapman
 Mathew Cherian
 Chicago Marriott Oak Brook
 Chicago Marriott O'Hare
 Dominic Chlebeck
 Ronald S. Chlebeck
 Yeen C. Chong
 April Christensen
 Linda M. Christensen-Rengel
 James S. Clapper
 Cathryn L. Clardy
 Amy M. Clark
 Chris P. Claude
 Patricia C. Clauson
 Edward J. Cleary
 Jay R. Clemens
 Paul W. Clements
 Timothy M. Clemmer
 Cloquet Country Club
 Cathy A. Clucas
 Linda R. Clute
 George F. Cobian
 Margaret P. Cochrane
 Gary B. Cohen
 Patricia A. Colburn
 Virginia M. Colby
 Cindy F. Cole
 Lawrence E. Collette
 Catherine S. Colletti
 Anthony Collins-Kwong
 COMPASS International Innovations,
 Inc.
 Pamela A. Conlin
 Tom Conlon
 Kathleen M. Conner
 Joseph C. Connolly
 Judith M. Coppersmith
 Peter J. Cordon
 Leon Q. Corpuz
 Cossetta's Italian Market & Pizzeria
 Patricia A. Costello
 Jeffrey D. Cotton
 Rollin H. Crawford
 Daniel Crear
 Daniel G. Croonquist
 Susan F. Cruse

David H. Cummings	Dorothy J. Ewald	Kenneth L. Graber	Robert A. Heesch	Allan D. Janski
Roger J. Dahlke	Dixie R. Ewing	Grand Casino Mille Lacs and	Rita J. Heintz	Jax Cafe
Richard C. Dahlstrom	Eyeboys Eyewear	Hinckley	Sarah B. Held	Jellycat, Inc.
Dak & Associates, LLC	Ellen M. Fahey	Joan Grant	Mark Heller	Jon Jepko
Dakota Electric Association	Kathleen K. Fair	Myron A. Grant	Robert K. Helm	Jet's Pizza
Jason A. Daniels	Bret D. Farrington	Joseph H. Gray	Jacob Z. Helms	Joseph T. Jilk
Milton W. Datta	Joan M. Felion	Joy E. Gray	Verlyn D. Hemmen	Edward P. Jirak
Thomas E. Davis	Jorge A. Ferreira	Patrick C. Gray	Mary T. Hendrickson	Wyn M. John
Thomas S. Deans	Gregory J. Ferrian	Janette V. Grazzini-Cook	Robert G. Hengelfelt	John's Tailors Company
Glenda G. Decapia	Fidelity Charitable Gift Fund	Great Waters Brewing Co.	Rhonda M. Heryla	Gerald T. Johnson
Angela J. Decker	FILLO Production Inc.	David J. Greavu	Allan A. Hietala	Jerome L. Johnson
Lloyd B. Dennis	Financial Planning Group, Inc	Gerald A. Gretch	Lynn Higgins	Joan I. Johnson
Wendy L. Dennis	Lambers B. Fisher	Kristen A. Griep	Randy J. Hildebrandt	Karen L. Johnson
Penny L. Destache	Mary E. Fisher	Roger B. Griffin	Stephen J. Hilton	Lyndsey M. Johnson
Catherine A. DeSutter	Dennis J. Flaherty	Margaret M. Grittner	JoAnn R. Hinnenthal	Marie E. Johnson
Details Salon	Arthur W. Flannigan	David W. Groenke	Eileen M. Hintze	Marshall E. Johnson
Detroit Marriott at the Renaissance	Jacqueline M. Fleming	Stanley A. Groff	Hussein K. Hirjiwalji	Sharee L. Johnson
Center	Gabriela Flores	Jeffrey J. Groskreutz	History Theatre	Shirley L. Johnson
Marian Deutschman	Richard R. Folkert	Bradley J. Gross	Margaret M. Hoarty	Theodore A. Johnson
Robert Devere	Allen E. Fongemie	Kent M. Grossbach	Catherine J. Hochhalter	Robert L. Johnston
Lois E. DeWitt	Margaret A. Ford	Gerald F. Gruber	David P. Hodgson	Ruby M. Johnston
Caroline Dietz	Carol Jo L. Forneris	Cindy L. Guhl	Judith A. Hoeffel	Janet K. Jones
Timothy M. Dietz	Lucille M. Foster	Barbara M. Gunderson	Matthew R. Hoffa	John W. Jones
Douglas H. Differt	Wanda A. Foster	Mary B. Gunderson	Phyllis A. Hohenwald	Patricia A. Jones
Harrison P. Dilworth	Jeanne C. Foussard	John G. Gustafson	Judy L. Hoke	Amy Jordan
Robert E. Dodd	Thomas J. Fox	Patricia H. Hagberg	Mary Jo Holly	Mary L. Jordan
Charles Doll	Elwin E. Fraley	Hairitage 'Hous	Dawn J. Holm	Mitch J. Jorgensen
Lawrence P. Donohue	Jennifer S. Frank	Joan G. Hallock	Bonnie K. Holub	David L. Jorve
John C. Dorsey	Ann Frankhanel	Henry H. Halvorson	David A. Homel	Joseph's Grill
Lawrence S. Dotte	Mark R. Freiberg	Mary E. Halvorson	Nanette M. Hoover	A. Eduardo Jurado Lopez
Allan C. Douglass	Konrad J. Friedemann	Richard L. Hammel	Hopkins Center for the Arts	Michael A. Kaess
William E. Dove	Jerome M. Friedmann	Sue Hammersmith	Catherine A. Hoppe	Wilbur M. Kahlstorf
Downtown Car Wash	Paul J. Froehle	Anne M. Handahl	Gary W. Horns	Edward L. Kalafat
George B. Droubie	Donald F. Frost	Thomas W. Handley	Jean M. Houghton	Siri L. Kalthoff
Duluth Pack	Randal W. Gackstetter	William A. Hanggi	Linda L. Houle	Sharon L. Kambeitz
David W. Durand	Eileen A. Gaddes	Jeanne Hanish	Heidi R. Hubbard	Charlene J. Kandt
Emily S. Eastwick	Robert E. Garber	James T. Hanks	Judith A. Hughes	Diane M. Kaphing
Jody Ebert	Ronald C. Gardenhire	Dorothy M. Hanson	Karen M. Hughes	Mark T. Kaschke
Brooks S. Edwards	Andrew L. Gardner	Marilyn R. Hanson	Raphael Hukai	Helen I. Kask
Nancy L. Edworthy	Kenneth D. Garelick	Sharon Hanson	Gary D. Hunt	Andrew P. Katz
Aaron Efron	Robert E. Gatti	James C. Hardman	Robert L. Hurley	Brenda Katz
Tanya C. Ehret	Susan Gatzert-Snyder	Barney W. Harris	Audrey A. Hutchins	David Katz
Kathryn V. Ekness	Alvin E. Geerdes	Mary K. Harrison	Nicola K. Hyser	Stuart Kaufman
Samy M. El-Halawani	Nicole C. Geffre	George C. Hart	Jean M. Ickstadt	Marlene C. Kayser
John W. Ellis	Karla J. Gehlen	Deanna Harter	Christine L. Igo	Constance M. Keefe-Smith
Herbert A. Elmstrom	Jeanne A. Gehrman	Beverly Y. Hartman	Ike's Food and Cocktail	Robert W. Keis
Tracy L. Elstad	Thomas Geistfeld	Haskell's Wine	Illusion Theater	Jasmine Z. Keller
Kristi N. Emerson	Mary F. Gillstrom	Bruce D. Haslerud	Nancy D. Ingham	Gerald L. Kelly
Barbara Engelmann	Toi Gilmore	Carl Hasselquist	Interactive Retirement Systems	Donna Kelsen
Naomi N. English	Patricia A. Gilpin	Lydia L. Hatterschide	William D. Isaacson	Joanne E. Kendall
Enjoy! Restaurant	Christopher R. Glasoe	Carol A. Haug	Kristi Iverson	Gary J. Ketch
James W. Eppel	Mary Alice B. Gleason	Judith L. Haukeness	Patricia A. Iverson	Elizabeth J. Keyes
Erbert and Gerberts	Mary Goering	Carol Hawkinson	Pearl A. Jackson	Terrance Khastgir
Anne M. Erickson	Paul F. Goering	Holly A. Hayes Berger	Lamont L. Jacobs	Murray Kieffer
Kari M. Erickson	Frederick J. Gooley	Suzanne E. Hayes	Tina M. Jacobson	Scott J. Kienitz
Joanne R. Espe-Lillo	Patricia I. Gordon-Rice	Patricia Hazzard	Teresa E. Jacobsz	Kyle B. Kiesel
James H. Esselman	Karen J. Gorz	Penny R. Heaberlin	Jake's City Grill	Lisa M. Kiesel
Evolution Salon	Joseph J. Goswitz	Charles W. Hedenstrom	Helen M. Jansen	Bonnie B. King

2011 United Hospital Donors

Joanne M. King	Gwen M. Lerner	James H. McCutchen	Penelope Moyers	Jolene J. Ormand
Margaret A. King	Carol L. Letendre	James R. McDonagh	Patrick J. Moynihan	Patricia A. Osen
Edward J. Kintop	Maxine H. Letourneau	Wendy M. McDonald	William J. Muggli	Darla S. Ostrand
Janie Kirschbaum	Kathryn A. Leveroos	William C. McDonald	Darwin M. Mulder	Karen J. Oswald
David B. Kispert	Robert E. Leverton	Darrel F. McGillis	Melissa J. Munsch	Sharon Overbaugh
Louise A. Klas	Tamera J. Lillemoe	Philip P. McGuire	Philip K. Munson	Ross N. Paitich
Cheryl M. Klenow	Obert T. Lillo	Joanne C. McLaughlin	Michael A. Murphy	Nancy J. Palda
Victor J. Klimoski	Linder's Garden Center	Mary B. McMillan	John S. Mutch	Panera Bread
David A. Klostreich	Dennis J. Lindquist	Carol F. McNamara	Anna C. Myer	Douglas J. Pariseau
Thomas R. Kluge	Carolyn S. Lingenfelter	Thomas M. McNamara	Kim I. Myers	Park Square Theatre
Kathryn Knight	Terry M. Lipelt	Gordon F. Meeker	Joanne L. Myhre	Melissa J. Parker
Dennis D. Knutson	Dorothy I. Lipschultz	Lee B. Mehrkens	Mystic Lake Casino Hotel	Nicolas Passell
Mary Ann Koch	Doris M. Listner	Carol C. Meldman	Patrice N. Nadeau	Paster Enterprises, LLC
Alan F. Kochevar	Lee T. Litman	Kelly A. Melius	Joseph Nasseff	Patagonia
Carolyn Koehler	Gloria K. Little	Matthew W. Mellen	Michael Nasseff	Patrick McGovern's Pub & Restaurant
Heather M. Kohnen-Norwex	Theresa L. Logajan	Mary A. Menard	Cynthia M. Nedved	Peapods Natural Toys
Lisa M. Kohner	Alan Logeais	Robert C. Mendenhall	Adam D. Nelson	Pearson Candy Company
Emil D. Koretzky	Bruce L. Lomker	Mary P. Mercado	Catherine M. Nelson	Mark Q. Pearson
Deborah Korthof-Stanton	Donna L. Long	Meritage	Dana L. Nelson	Wayne A. Pedersen
Robert J. Kosec	Kendelle J. Lopez Hall	Laura L. Messenger	Gerald L. Nelson	Benjamin Peltier
Mary S. Kowalski	Suzanne M. Loscheider	Jane E. Metcalf	Kathleen M. Nelson	Thomas P. Penne
Cheryl E. Koziol	Gwendalyn L. Lotzow	Leo J. Meyer	Mary J. Nelson	Penumbra Theatre Company
KQRS	Don Lucas	Richard L. Meyer	Patricia J. Nelson	Happy H. Peris
Rosemary Kranz	Jeffrey Lundeen	Rita J. Meyers	Frank Nemeth	Kathleen K. Perkins
Laurel A. Krause	Lorna C. Lusk	Aklilu L. Michael	William F. Neujahr	Jane M. Persoon
James R. Krawetz	Alan R. Luthi	Victoria M. Michaels	Michael W. Newman	Jane A. Perzyk
Eugene E. Krech	Gregory Lyon	Douglas R. Mickelson	Steve Newman	William M. Peters
William H. Krog	Lisa J. Lyons	Hilda E. Mickelson	Ardelle F. Nicoloff	Patricia A. Petersen
Mark L. Krueger	Pamela L. MacDonald	Laura A. Mickelson	Deborah J. Niemela	Wayne S. Petersen
KS95	John J. Mader	Alison J. Midden	Nilan Johnson Lewis PA	Alison M. Peterson
Patricia A. Kubash	Shane B. Madsen	Alice D. Mikel	Zygmunt Niwinski	Carole M. Peterson
Brian W. Kueppers	Dean A. Mahlke	Kaleen K. Mikulski	Melinda Nonnemacher	Donald N. Peterson
Trevor J. Kukowski	Eileen L. Makuch	Kathleen L. Milano	Susan M. Nordberg	Duane D. Peterson
Debra Kuper	Kelly S. Malmquist	Donald R. Miller	David R. Nordean	Holt A. Peterson
John A. Kurshoff	Leslie C. Malmquist	Gary P. Miller	Natalie D. Norderhus	Jeffrey D. Peterson
Erlene J. Lagerquist	Georgine M. Malone	Katherine A. Miller	Craig D. Norman	Kathleen M. Peterson
Sarah M. Lake	Jill N. Maltrud	Kathleen D. Miller	Donald E. Notvik	Marijo A. Peterson
Angela L. LaMotte	Mary Ann Mancini	Mary T. Milligan	Donna M. Novey	Terry D. Peterson
Sharon F. Lang	Thomas L. Mann	Lynne M. Mills	Nye's Polonaise Room	Josepha R. Petrus
Ann M. Langer	Edward N. Mansur	Minneapolis Marriott Southwest	Oak Glen Golf Course	Ina S. Pfefer
Florence V. LaPlante	Jo L. Marcotte	Minnesota Opera	Pauline G. O'Brien	Tracy L. Pfeifer
Mary B. Lardizabal	Jennifer A. Marker Johnson	Minnesota Vikings	Pamela J. O'Connell	Luke Pfothenauer
Greta L. Larsen	David D. Markert	Dominic J. Mitchell	Maureen M. O'Connor	Mildred L. Phelon
Paul T. Larsen	Kenneth M. Markwardt	Ila Mittal	Thomas L. Odland	Arouna Phommasouvanh
Norma L. Larson	Rosemary M. Marley	Charles A. Moe	Lynn M. O'Donnell	Christopher M. Pierce
Patricia LaShomb	George F. Marschall	John P. Moe	Glenn N. Oelerking	Gordon Pierpont
Darlene Lauridsen	Mary C. Marsden	Kristine A. Mohwinkel	Ann L. Oien	David C. Pikala
Gilbert G. Lautenshlager	Steven J. Martagon	James H. Moller	Harold A. Oien	Charlotte J. Pinc
Daniel G. Lavin	Kathleen M. Martine	Marjorie A. Moncrief	Carol H. O'Keefe	Richard L. Pinomaki
Edward J. Lawrence	Eugene A. Mascia	Darwin J. Monson	Old Log Theater	Cindy Pleau
Linda E. Lawrence	Ronald D. Maunu	Jonathan C. Moren	Robert J. Olsen	Myron M. Pocta
Margaret A. Lecy	Lawrence C. May	Carlos E. Moreno-Cabral	Debra J. Olson	Brian J. Pogainis
May Ka Leepalao	Donald P. Mayer	Kelly A. Morin	Faye D. Olson	Joe Pohl
Lee's Taxidermy	Roseann E. Mazierski	William Morrissey	Jewel M. Olson	Ernest Polichnia
Robert F. Lehner	Christopher C. McCain	Karoll M. Moses	Kenneth W. Olson	Stephen K. Porter
David Leighly	Carol A. McCaughy	Richard L. Moses	Wallace B. Olson	Alexander A. Portnov
Paula D. Lendobeja	Stanley R. McCormick	Kathleen A. Mountain	Rosemary L. Oolman	Barbara P. Posch-Branigan
Rita P. Lerman Erickson	Kevin McCradden	Saeid Movahedi-Lankarani	Organized Today	Pot O. Gold

Janine L. Potter	Saint Paul Police Department	Arthur L. Speck	Tom Conlon Photography	William H. Wearn
Patricia T. Powell	Ramasubbu Sairam	Georgi Speliopoulos	Tom Reid's Hockey Club Pit	Donald M. Weber
Leslie E. Prah	Pamela Sakkinen	Maureen M. Spence	Anca A. Toma	Sarah E. Weddell
Dennis O. Prawdzik	Andrew G. Sall	John H. Sperl	Lee A. Toman	Scott Weicht
James A. Prokop	Michael J. Salmen	Spitzley Enterprises, Inc.	Shirley D. Tomasetti	Sebastian M. Weigel
Marlys S. Proulx	Beatrice Samas	St. Croix Rod	Cindy Toombs	Barbara L. Weiland
Michael A. Pruszinske	Maren B. Sanderson	St. Paul Building & Construction	Charles R. Torman	Melvin P. Weiss
James W. Quaday	John Santos	Trades Council	Antoinette D. Townsend	Nicholas Weiss
Millicent M. Quast	Kay Sargent	Michael W. Stanley	Gerry Trainor	Raymond J. Welsh
Michael D. Quayle	Donna M. Sauer	Robert A. Stanley	Treasure Island Resort & Casino	Greg Wennes
Mary M. Quinn	JoAnn Sauro	Paul L. Stanton	Lora J. Trebesch	Nathaniel J. Wentler
Stephanie E. Radtke	Laurie A. Savino	Staples Advantage	Tria Restauraunt, Bar & Market	Susan J. Wenz
Gary A. Raines	Gregory T. Schaffer	Bruce C. Steadman	Trisko's Jewelry Sculptures Ltd	George A. West
Dean C. Ramsay	Rebecca M. Scharpe	Kathleen M. Stechman	William C. Trow	Marilyn J. Westermeyer
Gregory M. Rasmussen	John W. Schletty	Theresa A. Steeper	Michael Trucano	Susan E. Wheaton
Jamie L. Rasset	Carol A. Schoenthaler	Kathleen Stevenson	Michael J. Trump	James J. Wiberg
RBC Foundation-USA Employee Gift	Leroy A. Schommer	Margaret O. Stevenson	Scott E. Tverberg	David F. Wilke
Matching Program	Rosella A. Schones	Kevin T. Stieglbauer	Twin City Attorneys, PA	Stephen J. Willard
Robert W. Redding	Amy J. Schorn	Kenneth W. Stolper	Twintel, Inc.	Bill D. Williams
Donald L. Reeder	Suzanne S. Schradle	Phillip H. Stoltenberg	U.S. Bancorp Matching Gift Program	Williams-Sonoma - Mall of America
Jeremiah Reedy	Cheryl L. Schreiner	Warren E. Stone	Gordon T. Ueland	Troy M. Willis
Michael E. Regan	Roger A. Schuller	Paul E. Stotts	Matthew J. Uhrich	Phyllis L. Wilson
Marlin J. Reinardy	Karen E. Schultz	Daniel R. Stout	Mary C. Underwood	Wendy A. Wimmer
John J. Reinartz	Susan L. Schuster-Sieben	John G. Strickler	Thomas A. Urbanski	Marilyn K. Wirth
Patricia B. Reiox	Susan Schway	James C. Strom	Adane F. Usha	Wishing Well
Patricia A. Ricci	Darlene A. Scott	Michael P. Strom	Kimberly J. Utgaard	David L. Wittlief
Daniel J. Richardson	Lee E. Sedlund	Thomas C. Sundberg	Sharon L. Utgaard	Wayne C. Wittman
Patricia J. Richmond	Diane M. Seguin	Phil Sutherland	John J. Van Bogart	Jeffrey R. Wohlforth
Thomas A. Riebe	Judith L. Seibel	Edward E. Sveen	Dennis E. Van Roekel	Mark W. Wohlhuter
Linda H. Riley	Donald Seitz	Kris Swanson	Mai H. Vang	Woodbury Senior Living
Cyril P. Riopel	Anna Seydel	Roy E. Swanson	Mao Vang	Valerie Woods
Gail L. Risse	Scott D. Shaller	Kathleen M. Sweeney	Lorin J. Varney	Janice M. Woog
Kathleen M. Rivard	Jerald R. Shannon	Edward A. Swenson	Bruce S. Vatne	Paul D. Wornson
Manuel A. Rivera	Joan L. Shapiro	Valerie F. Swetland	Dennis J. Veiseth	Cory S. Wray
Dee Ann R. Roberts	Sarah L. Shapleymelting	John Swol	Jose Verdeja	Rochelle T. Wright
Rodgers Psychological Services, Inc.	Leroy E. Shea	Anil K. Tadavarthy	Ronald F. Vesel	Waseng Xiong
Richard W. Rodgers	Jack B. Shelton	Gary B. Taylor	Diane M. Vesey	Charles W. Young
Wesley E. Rogers	Chris J. Shinkle	Charles G. Terzian	Robert S. Voigt	Pamela E. Young
Margret C. Rohr	Goldie K. Siedow	The Dancing Fair	Michael Volkenant	Rhonda L. Zakheim
Daniel S. Rooney	Naveen N. Sikka	The Guthrie Theater	Gail Voth	Anca I. Zamfirescu
Gladis L. Rosales	Mika Simms	The Jungle Theater	Nicholas C. Voynovich	Mario J. Zarama
Luis Rosario	Thomas M. Sipkins	The Lexington Restaurant	Ronald L. Wagenknecht	Claudia A. Zellmer
Salvador M. Rosas	Thinesh Sivapatham	The Minnesota Orchestra	Leland D. Wagner	Christy I. Zender
Michael J. Roscher	Skin Rejuvenation Clinic, P.A.	The Oceanaire Seafood Room	Glenn M. Wahman	Wenbo Zhang
Allan B. Rossman	Alice Smith	The Sawdust Factory	Wendy L. Waite	Gerald E. Zierdt
Pamella J. Roth	Carolyn J. Smith	Roger C. Thede	Debbie A. Walczak	Patrick A. Zittel
Jon S. Rousu	Kathy J. Smith	Leon Theron	Ernest Walker	Jason A. Zotalis
Brynild C. Rowberg	Marilyn G. Smith	James F. Thomas	Lee Wall	Stephanie J. Zurek
Delaine C. Rud	Marise A. Smith	John E. Thomas	Mary E. Ware	
Joseph F. Rugnetta	Patti S. Smith	Amy E. Thompson	William G. Waterkamp	
Maxine M. Ruiz	Polly M. Smith	James W. Thomson	Virginia C. Waud	
Anne L. Rumsey	Steven R. Smith	David A. Thue		
Diane B. Rumsey	William K. Smith	Sharon J. Thuecks		
Dale Russ	Richard A. Smookler	Mercy N. Timothy		
Barbara S. Ryan	Kristy M. Solberg	Tinucci's Restaurant		
Megan Ryan	Linnea F. Solem	Beverly J. Titus		
Michael S. Sabo	Ralph E. Sonday	Mary Jane Tocko		
Gerald F. Sadowski	Dawn M. Sonnee	Geraldine J. Todd		

We apologize for any errors or omissions that may appear in this listing. Please contact the United Hospital Foundation at 651-241-8022 with questions or corrections.

PLANNED GIVING: Death and Taxes



Larry Gamst, the managing principal of DS&B Ltd., is a board member of the United Hospital Foundation.

“Nothing is certain but death and taxes.” A fatalistic proverb, in that only death leads to the avoidance of the burden of taxes. It was first uttered by Daniel Defoe in *The Political History of the Devil* in 1726, as “things as certain as death and taxes, can be more firmly believed.”

Benjamin Franklin stated the words we have usually heard in a letter in 1789 as, “In this world nothing can be said to be certain, except death and taxes.” In today’s political environment we know there are taxes, but we do not know how or when they will change. We also know that planned giving is often tied to tax programs for the advantages gained in having our favorite Uncle share in the pleasure of the gift.

With a presidential campaign and election on tap in 2012, taxes seem to be one of the key issues. The budget deficits and stalemates in Congress imply that change will be coming, but we do not know how soon or how much, or who will be affected most. Will this change benefit or harm the arena of medical research and medical breakthroughs? Will this change benefit or harm all forms of non-profit organizations?

In my last article I referred to planned giving as an issue of dollars and sense, not an issue of how much our favorite Uncle would share in the pleasure of the gift. Many organizations remind us regularly that the personal legacy we may want to create can be done with assets that have grown substantially. They also note that we can do so at a tax savings or that we can gain tax benefit from the gift.

When one is concerned about the change in tax laws, such as limiting the amounts donated or changing income tax rates for some, one tends to take a wait-and-see position before making a decision about a charitable deduction. In my view, the concern should first relate to how I create the legacy and how I go about achieving results as soon as possible.

The tax benefits that may come along with the decision are “gravy,” and they should be accepted as an enhancement. It is most important to start a program of planned giving as early in the year as possible and adjust as tax laws change. We are at a point where there is a critical need for monies to increase our knowledge and to find cures for a plethora of ailments. We can all be part of improving on what is evident today for generations to follow.

It’s amazing to note the improved movement of information in 60 years since the first commercial computer was produced in 1951. The investment in intellectual property has led to advancements in so many scientific and artistic fields; it should amaze all of us. Yet we accept these changes as normal and routine while barely give them any thought. We need to continue using more resources to be sure that future generations will accept enhancements as being ordinary and expected. Finding better solutions should be the main objective or goal of a plan for giving.

In closing, while I have worked in the tax planning arena for years, unfortunately all that is certain is death and taxes. We can’t change that, but we can work within the frame that is provided. We can create a great “work of art” through planned giving, and we should not waste any more time in starting on the creation. If there are tax benefits, we should avail ourselves of them, but we should not let them be the driving force or factor.

A quote from Voltaire might best summarize: “Every man is guilty of all the good he didn’t do.” If you have the ability, do your part to make certain that you are not one of the guilty. Let us all make a decision today and not wait for change that may never occur.

Summit Society Member News

Summit Society members are donors who contribute \$1,000 or more each year for the benefit of United Hospital. Throughout the years, these donors have generously supported the creation of ExerCare, Nasseff Heart Center, Nasseff Neuroscience Center, Peter J. King Emergency Care Center, Peter J. King Family Health Center and Jesse E. Edwards Registry, just to name a few. These benefactors remain the core of the committed community support for United. The current project is the Elaine S. Larson Surgical Center Campaign (see page 1).

Benefits of becoming a Summit Society member include: concierge services; lunch with Tom O'Connor, United president; invitation to the educational Meet the Experts sessions; permanent recognition on the Heritage Wall in the hospital lobby; complimentary one-month membership at Milton M. Hurvitz ExerCare Fitness Center; assistance with the Lipschultz Guest Apartments; and discounts for the women's heart assessment at Nasseff Heart Center and the United Hospital Gift Shop.

Meet the Experts Program

Meet the Experts is a wellness health benefit offered to Summit Society donors and their guests. The 2011 donor education series ended in December with a very interesting presentation by Luke Benedict, MD, of United Medical Specialties of St. Paul, on Type 2 diabetes. Dr. Benedict's presentation covered the definition of Type 2 diabetes, treatment, diabetes-related complications and care.

Diabetes is one of the most common health conditions affecting Americans today. We are proud to recognize United's excellence in this area; our diabetes care ranks in the top 1% in the nation. United Hospital's diabetes care management program offers a team approach in providing patients the best outcomes when managing their diabetes both in and out of the hospital.

**TO BECOME A SUMMIT SOCIETY
MEMBER, CONTACT CINDY EARLY
AT 651-241-8027.**

Learn About Named Funds and Their Importance

A named fund is a way to ensure that your gift provides revenue for your desired charitable organization or purpose. A gift for a named fund can either be designated for an endowment fund or a temporarily restricted fund. Named funds are funded by taxable donations. When establishing a named fund, we recommend careful thought. For example, the fund name could include your family name or name of a loved one whom you wish to memorialize.

Why Establish a Named Fund?

United Hospital is committed to meeting the challenges of changing technology, providing state-of-the-art facilities and improving the healing experience for our patients, families and employees. It is only with continued support that we can secure our future. With planning it is possible to create a lasting legacy with the establishment of a named fund. A fund can be used to educate staff or patients, provide new technology, advance research, support us in providing exceptional care — a true investment in United.

To learn more about a named fund, contact the United Hospital Foundation at 651-241-8022.

The Birth Center of United Hospital

The Birth Center of United Hospital is a regional center dedicated to excellence in health care for women and infants.

Why choose the Birth Center of United Hospital?

- The Birth Center is a designated Level III perinatal center with the staff and resources to care for low- and high-risk pregnancies and births.
- OB/Gyn physician on site 24 hours a day/7 days a week.
- Nurses provide care for you and your baby in the comfort of your room.
- Individualized family-centered care for you and your baby.
- A variety of programs and classes to ensure that your pregnancy is as healthy as possible.

Most women have uncomplicated pregnancies and births and healthy babies. However, women who choose to give birth at The Birth Center can take comfort in knowing that staff members are prepared to handle any complication that may arise.

Preparing to have a child is a special time, full of hopes and dreams, preparations and decisions. Please take a video tour of the Birth Center at unitedhospital.com, as well as enroll to receive The Parent Review. This free weekly electronic newsletter for expectant parents includes information, news and resources. For additional information, call 651-241-6290.



FUND SPOTLIGHT

Birth Center Fund

To support the Birth Center Fund, please contact the United Hospital Foundation at 651-241-8022.

Visit unitedhospital.com for more information on the Birth Center.

United Hospital Foundation Funds

BIRTH CENTER

This fund provides resources for programs and equipment for one of the state's busiest birth centers.

CAL CALMENSON PULMONARY & CARDIAC EDUCATION FUND

The fund provides for pulmonary and cardiac education for patients and staff at United Hospital.

CARDIOLOGY RESEARCH FUND

The vision is to be a leader in clinical cardiology and provide the highest level of quality research service. The fund helps expand the knowledge of current and developing therapies.

DIABETES FUND

A health care team works together to find the best way to manage diabetes. This fund provides support for diabetes programs and projects. United Hospital is Joint Commission certified for inpatient diabetes care program. Our program is in the top 1% in the nation.

JESSE E. EDWARDS ENDOWMENT FUND

This cataloged collection of nearly 24,366 human hearts and 88,000 photographic slides provides a unique learning and working opportunity for local, national and international physicians, which benefits every person with the potential for heart disease. The endowment fund keeps the registry here at United.

HEART UNITED FUND

The Nasseff Heart Center offers comprehensive care from diagnosis to rehabilitation.

ELAINE S. AND ROBERT E. LARSON ENDOWMENT

This fund supports the designation of a medical director position of the Stroke Intervention Center within the Nasseff Neuroscience Center, which already has the components for a stroke center of excellence in place, including experienced staff, interventional radiological treatments, rehabilitation services, screenings, prevention and risk-reduction programs.

LIPSCHULTZ GUEST APARTMENTS ENDOWMENT FUND

The apartments offer a place for families to stay when a loved one is hospitalized. This fund helps subsidize guests who can't afford to pay for the service.

MEDICAL EDUCATION AND RESEARCH ENDOWMENT FUND

This resource is funded entirely by physicians and provides grants for clinical research, educational opportunities and the purchase of ancillary equipment.

MILTON M. HURWITZ EXERCARE FITNESS CENTER FUND

The Milton M. Hurwitz ExerCare Fitness Center provides medically safe and effective exercise and education programs to patients, their families and the community.

NEUROSCIENCE UNITED FUND

The John Nasseff Neuroscience Institute offers comprehensive services, including a multi-disciplinary team for acute and long-term care, and serves as a research and education center to patients with neurologic disorders.

ELAINE S. LARSON SURGICAL CENTER CAMPAIGN

The campaign supports the renovation of the United Hospital operating rooms. Upgrades bring state-of-the-art technology and capabilities to continue providing exceptional care. To be completed in Fall 2013.

PETER J. KING EMERGENCY CARE CENTER AT UNITED HOSPITAL FUND

United's Emergency Department, one of the busiest in the Twin Cities, was expanded to continue to meet the needs of our community as we respond to life-threatening injuries and illness, as well as the possibilities of terrorist threats, large-scale natural disasters and worldwide epidemics. The renovated Emergency Department opened in the Spring of 2011.

ADDITIONAL FUNDS

Jim Adamski Complementary Therapy Fund
Behavioral Health Services Fund
Breastfeeding Resource Center
Cancer Care and Research Fund
Cardiovascular Health Improvement Fund
Center for Caring
Chapel/Pastoral Care/Spiritual Care Fund
Claussen Scholarship Endowment Fund
Community Partnership Fund
Dr. C. Richard Guiton Ethics Fund
Dr. Karon Pulmonary Disease Fund
Employee Fund (EFAC)
Equipment Fund
Faye Ann Johnson Memorial Education Fund
Free Care Endowment Fund
G. Kamman Tumor Conference Fund
General Fund
Heart/Lung Endowment Fund
John & Delores Holl Endowment Fund
Lawson Family Donor Advised Fund
Medicine Fund
Newman Breast Cancer Fund
Maureen Smith Nursing Education Fund
Olivia Birth Center Fund
Oncology Endowment Fund
Pain Center
Ragon Cardiac Fund
Rifkin Cardiac Fund
Rinke Cardiovascular Endowment Fund
Sam Singer Memorial Fund
Sharon K. Willbrandt Memorial Fund
Volunteer Fund

To make a donation to any United Hospital Foundation Fund, please call the United Hospital Foundation at 651-241-8022 or visit us online to learn more about planned giving at www.unitedhospital.com/unitedfoundation.

United Hospital Donor Tributes

United Hospital Foundation's Honoring Program offers a distinctive and meaningful way to remember, honor, pay tribute or recognize those important people in your life. By giving in remembrance, you offer a gift of lasting memory.

United Hospital's continued strength results in large measure from the support received from generous individuals like you. The financial commitment of our community members enables United Hospital Foundation to invest in important projects at United — supporting the best in quality health care for our patients while meeting the needs of our donors. The following are memorial/tribute gifts received from Sept. 13, 2011, through Dec. 31, 2011.

If you would like to honor, remember or celebrate someone or an event, please complete the enclosed honoring envelope and send it with your donation to the United Hospital Foundation.

In Memory of

Irene Bader

Margie and Steve Krause

Leah Benenson

Margie and Steve Krause

Leona Frances Cramlet

John Nasseff and Helene Houle

Edith Dow

Mary Bosscher

Rachel Cooper

Andrea Cowell

Thomas and Stephanie Forliti

Becky and Tim Grabow

Ann Kral

Cynthia and Peter Lecy

Josanne and Thomas McCarver

Wayne and Karen Newhouse

Andrew and Tera Peterson

Marlys Proulx

Marjorie Tushaus

William H. Eckland

Jeff H. Eckland

Ruth E. Finn

Karen and Bruce Gershman

Hazel Garner

Marjorie Edwards

Lois Graham

Dolores Sailor

Lawrence Hartman

Betty Adam

Elizabeth Hatfield

Joanne and Roger Cherrington

Conversation Club Members:

Maureen Jordan, Susan

Glennon, Kate Reno, Barb Green

and Carol Segal

Carolyn and Dale Dosser

Priscilla Farnham

Judith and Eugene Nelson

Barbara and Douglas Pappin

Bill and Patt Petersen

Frederick and Kay Tierney, Jr.

Hanne Wilmshurst

Gloria and Steven Worth

James T. Kane

Jean Kane

Pam Ketcham and the rest of

Family members

Rebecca and Keith Ketcham

Daniel King

David E. Feinberg

Kathleen Kirchen

Mike Walsh and Maureen

Kucera-Walsh

Lisa Lulich

John and Judy Fechter

Pat Moran

Mike Walsh and Maureen

Kucera-Walsh

Laura J. Nelson

Thomas and Florence Thomson

David Lee Olson

Employees of the Chapter 13

Trustee's Office

Alison and Seth Colton

Pamela and Scott Kroyer

Nancy and Allen Levine

Vicki Lofquist

Rhoda and Don Mains

Rosanne Nathanson

Roderick Riese

Carol Robertshaw

John and Geraldine Snee

Elaine and Stuart Steinman

Linda and Daniel Wagner

Ellen Wersan and Timothy Sandry

Madeline Muller Peterson

Dennis and Kathy Peterson

Eldon "Pokey" Pulkrabek

Linda Hamre and Glen Wheeler

Anne Scott and Family

Elaine Tuhy

Maynard and Delores Zebell

Dwaine and Deb Zebell

Jerry Reynolds

Ruby Johnston

Jerry and Marie Riopel

Raymond and Lorraine Houle

Nora Scanlan

Marjorie Edwards

Sandra J. Schmidt

John Nasseff and Helene Houle

Frank Schneider

Beverly Feipel

Wayne Schroer

Michelle Schroer

Zun-Chen "Betty" Shen

David E. Feinberg

John Shepherd

Marjorie Edwards

Joyce Darlene Sinn

Joe and Sandy Schaaf

Carol Sjoberg

William Sjoberg

David J. Sorgatz

Elaine S. Larson

Paula Jean Tankenoff

Karen and Bruce Gershman

Virginia A. Vatterott

Marjorie Edwards

In Commemoration of

Dr. Jesse Edwards

Duane and Jean Bojack

David Hilliard, Prairie Properties, L.P.

Dr. and Mrs. James E. Stevenson

Donald R. Jaworski

Margaret Jaworski

Maureen Smith

Jennifer and Jon Kerr

Med-Ed

Rissy Smith

Alice Smith

Marie M. and George B. Walen

Betty Jane Walen

Sharon K. Willbrant

Donna Kelsen

James and Leslie Studenski

In Celebration of

HAPPY BIRTHDAY

Dr. Stan and Sue Leonard

Marjorie Edwards

NEW GRANDDAUGHTER

Mr. and Mrs. Tom Moscoe

Karen and Bruce Gershman

Mr. and Mrs. Lenny Snyder

Karen and Bruce Gershman

THE OCCASION OF CHRISTMAS

Bob and Nancy Wittman

Mr. and Mrs. Wayne C. Wittman

David and Cheryl Wittman

Mr. and Mrs. Wayne C. Wittman

Jenna Wittman

Mr. and Mrs. Wayne C. Wittman

Tony Mondry

Mr. and Mrs. Wayne C. Wittman

WEDDING ANNIVERSARY

J. Donald and M. Cathy Donahue

Elaine S. Larson

Mr. and Mrs. Steven Engler

Karen and Bruce Gershman

In Gratitude to

Dr. Jesse Edwards, Mrs. Jesse Edwards, Dr. Brooks Edwards

Dr. and Mrs. Paul Gannon

In Honor of

Dr. James R. Flink

Charles S. Fodor

Louis B. and Ida Lee Hurvitz

Eric Sjostrom

UNITED HOSPITAL

David Byrd

Elaine S. Larson

Terri Dresen

Sally A. Thompson

Good Health Wishes

Mrs. Fern Badzin

Karen and Bruce Gershman

Dr. and Mrs. Paul Gannon

Marjorie Edwards

Suzanne Leonard

Marjorie Edwards

The Heritage Society

The Heritage Society is our way of acknowledging donors who make the Foundation part of their estate plan or who provide perpetual support of our hospital through the creation of an endowment fund. These generous individuals are shapers of the future, making their mark with gifts that will benefit generations to come. An estate gift is so much more than a donation. It is a charitable act that provides a steady stream of support that allows the Foundation to respond to changing needs — forever.

To become a member of the Heritage Society, all you need to do is inform us of the provision you have made for the Foundation in your will or trust. The amount can vary and does not have to be disclosed. You may remain anonymous if you wish.

For more information, please contact the United Hospital Foundation at 651-241-8022. Confidential consultation on charitable giving with Foundation staff or other experts is available.

We recognize and thank the following members of the Heritage Society:

Duke Adamski	James Flink, M.D. and Diane	Rose Hutterer	Joan Muhlenkord	Dolores M. Schram
Darcy Andahl	Uecker-Flink, R.N.	Mary Lou Jacobson	LeVonne Mulrooney	William C. Schram, Jr.
Gudfinna Angevine	Dan Foley, M.D.	Charlotte Janssen	Lorraine C. Murphy	Christine and Michael Seitz
Charles and Marjorie Avoles	Milton Frogner	Evelyn B. Johnson	Dean K. Murray	Drs. Richard and Barbara
Barbara and Dan Balik	Virda Frogner	David B. and Julie A. Jones	John Nasseff	Shank
Helen L. Bauer	Elsie Geiss	Ione N. Kadden	Peter L. Navtzeny	Ronald A. and Norma E.
Cynthia Bean	Stephen Gryzan, M.D. and	Margaret D. Kincaid	Scott Nelson and Roxanne	Signorelli
Maxine A. Becker	Thomas M. Reynen	Elsie J. Lane	Hart	Charles Signs
Eleanor Beikler	Richard J. Haag	Elaine S. and Robert E.	Winnifred Netherly	Freda Silver
Larry and Nancy Benton	Jerome M. and Marice L.	Larson	Sandy Neuman	Eleanor V. Stafstrom
John and Andrea Bien	Halper Family Foundation	Norma L. Larson	Mary Ann and Ed Newman	Florence and Donald Stanton
Rachel Hill Boeckmann	M. Lenore Hannon	The Lawson Family	Frederick M. Owens, Jr., M.D.	Elvera Stauffacher
William Bogenberger	Douglas H. and Marie E.	Roger R. Lenzmeier	and Lucy T. Owens	Phil Sutherland
Paul J. Bosman	Hanson	N. Logan Leven, M.D.	H. Johanne Platzer	James F. Sylvester
Elinor Brodie	Beda Harper	Richard Leven	Shirley J. Pond	Joan C. Thompson
Edwina and Raymond	Clara Louis Harris	Bill and Sybil Lipschultz	George Power, Jr.	Ruemah H. Thompson
Burrows	Nancy Ottis Harris	Mrs. Samuel (Ruth)	Florine J. Prusak	Joyce Johanne Tobiason
David W. Byrd	John G. and Alice L. Harrison	Lipschultz	Rosella E. Qualey	Robert and Roberta Topness
Mary D. Cannon	Marshall and Elizabeth	Jean and Gunnar Ljungkull	Russell and Dorothy Ragon	Mary L. Tyler
William J. Carthaus	Hatfield	Dr. Thomas and Katie Love	Paul and Irene Rifkin	Mr. and Mrs. Ralph Tyler
Robert H. Chandler	Marjorie Hathaway	Harvey Lubov	Karen A. Ringheim	Paul and Carolyn Verret
Dorothy Chappell	Monica and Harold Heitgen	Gertrude Maiden	Jack Ritt	Tim L. Vesperman
Bruce F. Church	Rebecca F. Hensel	Wyllene Pearson Marks	Clayton L. Robinson	Carol J. Wagner
Clara Claussen	Phillip W. Herzog	William H. Mason, III	Robert R. Robinson	Betty Jane Walen
Frieda Claussen	George S. Hill	Kay Mathes	Norma and Dick Roessler	Diane Weinfurtner
Stephanie S. Cook	Louis Fors Hill	Theresa T. McCarthy	John T. Rogers, M.D.	Patricia H. Whitacre
Pat and Jim Cooksey	Stan and Doris Hill	Dr. and Mrs. Robert Merrick	Louise and Thomas Rose	Leonard Wilkening
Lisa M. Damon	Edith B. Hodgson	Peter W. Michalowski	Norman Rose	Norb and Karen Winter
Patrick and Marie Dreschich	John and Dolores Holl	David R. Miller	Lillian M. Rumble	Jason Zotalis
Arthur G. Driscoll	Dr. Ken and Linda Holmen	Dr. Zondal and Esther Miller	Jerry Sansby	
Cindy and Bill Early	Joseph B. Hreha	Mark and Joan Mishek	James Scarpetta, Jr.	Eleven of our donors wish to
Mina Fergestad	Mary L. Huberty	Lucille Moeller	Craig and Leah Schmalz	remain anonymous.

United Hospital Foundation Staff

41

2011 REPORT TO THE COMMUNITY |



Back row: Jo Marcotte, Cindy Early, Duke Adamski, Janet Berg.
Front row: Jason Zotalis, David Byrd.

THE UNITED HOSPITAL FOUNDATION EXISTS TO ENHANCE THE HEALTH OF UNITED HOSPITAL PATIENTS AND THE WELLNESS OF THE COMMUNITY WE SERVE.

Duke Adamski

President

Janet Berg

Development Associate

David Byrd

Director of Development

Cindy Early

Major Gifts Manager

Jo Marcotte

Department Secretary

Jason Zotalis

Individual Gifts Officer

United Hospital Foundation Board of Directors

Duke Adamski**

President, United Hospital Foundation

Sid Applebaum*

Big Top Liquors

Ravi Balasubrahmanyam, MD**

Vice-Chief of Staff, United Hospital;
United Family Medicine

Alan Bank, MD

United Heart & Vascular Clinic

John Bien

Treasurer, Foundation Board;
United Hospital

Bob Chandler

Chandler and Brown, Ltd.

Vic Corbett, MD**

United Medical Specialties

Merry DeCourcy

Community Member

Song Lo Fawcett

Fawcett Law

Mary Gag, RN

United Hospital

Larry Gamst

DS&B, Ltd.

Karen Gershman

Community Member

David Herr

Maslon, Edelman, Borman & Brand, LLP

Louis Fors Hill*

Community Member

Tom Hodnefeld

HLB Tautges Redpath, Ltd.

Helene Houle

Community Member

Gerry Hughes

Community Member

Russell King

Secretary, Foundation Board;
King Capital Corporation

James Kowalski

Past Chair, Foundation Board;
Kowalski Companies

Norma L. Larson*

Community Member

Patrick Mazorol

Bethel University

Joseph Micallef*

Community Member

Peter Michalowski

Goodrich

Daniel Mott

Fredrikson & Byron

Terry Myhre

Globe Education Network

Tom O'Connor**

President, United Hospital

Jack Ritt

Chair, Foundation Board;
North Star Bank

Peter Robb

Mairs & Power

Nancy L. Rosenberg

Big Top Liquors

Wendy Rubin

Wendy Rubin, Ltd.

Kris Taylor

Ecolab, Inc.

Jon V. Thomas, MD**

Chief of Staff, United Hospital;
ENT Specialty Care of MN

Joan Thompson

Minnesota Wire

Paul Verret

Vice Chair, Foundation Board;
Community Member

Len Wilkening*

Community Member

Stan Williams, PhD

University of Minnesota

Bart Zibrowski

McGough Companies

* Emeritus ** Ex-Officio

United Hospital Foundation
333 North Smith Avenue
Saint Paul, MN 55102

NONPROFIT
ORGANIZATION
U.S. POSTAGE
PAID
TWIN CITIES MN
PERMIT 3121