

UNITED HOSPITAL A RENEWED COMMITMENT TO SERVICE

2008 REPORT TO THE COMMUNITY

United Hospital Foundation

celebrating
years

25

United Hospital
Foundation

HIGHLIGHTS

President's message: United Hospital's
commitment during tough economic times

A patient's story: life after a stroke

The future of emergency care:

Peter J. King Emergency

Care Center at United Hospital update

2009 Service to Humanity Gala honorees

Peter J. King Family Health Center
celebrates grand opening

2008 Financials

Peter J. King Family Health Center



UNITED HOSPITAL
FOUNDATION

United Hospital's commitment during tough economic times



Tomi Ryba, president, United Hospital

It's been a few months since I began my new role as President of United Hospital, and I continue to be amazed by all the philanthropic supporters who want to help our patients and the communities we serve. Your devotion and commitment to this fine institution is abundantly clear.

I chose to join United Hospital because I believe in its mission and I want to help improve the quality of life in our communities. For more than 150 years, United has served our communities well, with the highest quality medical care provided by an exceptional team of physicians, nurses and other health care professionals.

Last year, more than 200,000 people came to United for their health care needs. Of that total, more than 44,000 came through our Emergency Department, an area of the hospital that is 30 years old. If you drive by United, you can see the construction of our new Emergency Department for the 21st century.

This new Emergency Department is truly "The Front Door To The Community," and will ensure we treat patients quickly and efficiently. But, our campaign for the future of emergency care involves much more than new bricks and mortar. Critically important is the "behind-the-scenes" work being done to transform the care experience for our patients. We are focused on the patient experience and customer service. When patients arrive at United, we're not just taking care of them; we're also caring for their family.

Our goal is that this facility will be the standard for which all future emergency facilities will be modeled. This new customer service model includes technological advancements, enhanced efficiencies and emergency preparedness capabilities. We are committed to providing this in a new space that will reduce anxiety and foster patient and family healing.

This is an ambitious project, but one that is fundamental to the health and well-being of the east metro and beyond. It's no secret we face many challenges with the struggling economy and changes in the health care industry. As a result, philanthropy is increasingly vital to our mission of delivering exceptional care to the communities we serve. I am truly grateful for your ongoing support as we work to bring the latest advancements in medicine, improved services and streamlined delivery essential to providing our patients with the highest quality care they deserve.

I look forward to getting to know you, and finding effective ways to work together to enhance the health of our communities!

A handwritten signature in dark ink that reads "Tomi Ryba". The script is fluid and cursive.

Learn more about Tomi Ryba, United Hospital's new president, on page 9.

The future of emergency care: Peter J. King Emergency Care Center at United Hospital update

In 2008, more than 44,000 patients came to United Hospital through the Emergency Department and received excellent care from an extraordinary care team, despite working in an area of the hospital that was built in 1979 and last remodeled in 1992.

But that is all changing and April 2009 marked the one-year anniversary since United Hospital broke ground on its new state-of-the-art Peter J. King Emergency Care Center.

Building the future of emergency care involves much more than the physical construction that is well underway on campus. It is about a critical transformation of the patient care experience.

CARE NAVIGATION

As the largest specialty hospital in the east metro and western Wisconsin, United Hospital serves more than 200,000 people annually. In addition, United is a referral center for other area hospitals and clinics and also a receiving care center for adults and adolescents with serious mental illness. As the number of patients continues to increase, so does the diversity and complexity of challenges facing emergency care. More patients are without access to medical care or health insurance. Mental illness and health issues related to aging present special challenges in the Emergency Department.

“In respect to the more complex health issues we’re seeing and the financial times we are in, it is even more crucial care is focused on how patients can



Peter J. King Emergency Care Center at United Hospital.

better navigate and monitor the health care provided to them,” said Jay Westwater, MD, medical director, Emergency Department, United Hospital.

In winter 2008, the Guest Service Team added new staff to provide assistance specifically to patients and their families arriving in an emergent situation.

These patient liaisons provide patient transportation as well as help ensure questions and concerns are addressed in a timely manner. In addition, the Emergency Care Department staff continues work on enhancing customer service and patient experience.

CONSTRUCTION

Since breaking ground, the construction efforts have focused on completing the critical sitework, interior moves and new helipad needed before building.



Inside entrance area of Peter J. King Emergency Care Center at United Hospital.

THANK YOU

Thank you to each and every one of our donors, whose generosity will make it possible for United Hospital to provide the finest emergency medical care available. It is through your ongoing support that we will continue to provide our patients with the highest quality care.



WATCH THE CONSTRUCTION FROM YOUR COMPUTER!

You can watch construction of the Peter J. King Emergency Care Center live on www.unitedhospital.com.

On the Web site's main page, click on “Construction Cam” under Helpful Links.

The new faces on United Hospital's Senior Leadership Team



Bob Plaszczyk, vice president, Operations, United Hospital

Bob Plaszczyk assumed the role of vice president of Operations of United Hospital in November 2008 and while he is a newer face to United, he is no stranger to Allina.

Plaszczyk joined Allina more than eight years ago as a computer consultant and most recently was Chief Information Officer before coming to United. Along with his health care background, Plaszczyk also has nine years in the Air Force.

"I'm someone who thrives on change and a challenge, making United Hospital a great place for me to call home. It's apparent as I walk the halls of United, we are on the verge of something great. While we have barriers to work through, it's clear we have some of the best health care providers in Allina," said Plaszczyk.

Plaszczyk's main priorities involve projects key to United's long-term success and include the new Emergency Department, closing the financial gap and finding ways to grow our business during tough economic times.



Jeff Wicklander, RN, BSN, MSN, APRN, BC-NE, vice president, Patient Care, United Hospital

Jeff Wicklander became vice president of Patient Care at United Hospital in February 2009.

As United's Chief Nursing Officer, Wicklander oversees all patient care support departments such as Pharmacy, Respiratory Therapy, Spiritual Care, Social Work, Information Services, and is responsible for ensuring a comprehensive quality plan for patient care.

Prior to coming to United, Wicklander was Director of Nursing, ED, CDART, Ortho & Spine at Abbott Northwestern Hospital.

"I could not have been more excited or honored to join the very well-respected leadership team here at United," said Wicklander.

Wicklander received his Bachelor's of Science Nursing from Mankato State University and Master's of Science Nursing from the University of Minnesota. He is also board certified as an acute care nurse practitioner and nurse executive.

The Emergency Department Community Campaign Committee

The Emergency Department Community Campaign committee has the vital, but daunting, task to raise the funds necessary for the new Peter J. King Emergency Care Center. Leading its efforts are committee co-chairs Jack Ritt and Joan Thompson, both longtime advocates and supporters of United Hospital and the communities we serve.

JACK RITT

Jack Ritt, United Hospital Foundation board vice chair, has volunteered in support of United Hospital, its programs and services to the communities since 2001.

“As a banker, I deal with people’s financial well-being. At the hospital, I deal with their physical and emotional well-being. It’s quite rewarding for me to be involved in giving back to the community,” said Ritt.

Jack Ritt started his banking career when he began working part-time during the summers at Midway National Bank when just 14 years-old. After graduating from Georgetown University, he joined the bank full-time and served in various capacities until the sale of Midway National Bank. Today with a combined total of 52 years in banking, you can still find Ritt at North Star Bank, either at its Roseville or White Bear Lake location where he serves as Chairman and Chief Executive Officer. Ritt, United Hospital Foundation’s 2008 Trustee of the Year and 2006 Service to Humanity Gala honoree, is also active in several other local charitable endeavors.

JOAN THOMPSON

Joan Thompson became affiliated with United Hospital and served on the Board 2001-2003. She has also served on the United Hospital Foundation Board since 2004. Thompson has made a great impact

by serving as a United Hospital Foundation Board chair, Service to Humanity Gala Chair in 2003/2004 and as a co-chair in 2005. Over that time the Gala has grown into a premier event in Saint Paul, not to be missed.

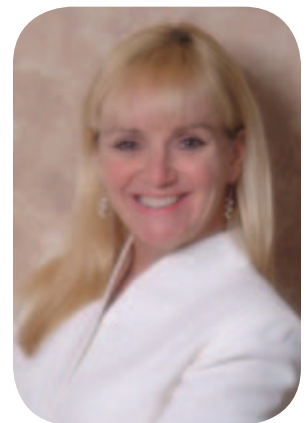
“It has been a pleasure to give back to Saint Paul through United Hospital,” says Thompson. “Programs and services United offers are very much needed in our community, and I’m proud to be a part of United’s future, serving those needs.”

Thompson grew up in a large, close-knit family in Saint Paul’s Highland Park which instilled a philosophy of compassion and encouraged giving back to their community. Part of that philosophy has been incorporated into Minnesota Wire, a family business founded in 1968 by Thompson’s father. As Executive Vice President & CFO, part of Thompson’s responsibilities includes managing the organization’s and family charitable giving fund. Each year the company donates a percent of their profits throughout the communities in which they do business including St. Paul, MN and Eau Claire, WI.

Thompson was named United Hospital Foundation’s 2006 Trustee of the Year and has also served on numerous local boards, including Allina Health Systems since 2007.



Jack Ritt, co-chair



Joan Thompson, co-chair

Emergency Department Community Campaign Committee

Sidney Applebaum
Applebaum
Companies

Phil Bifulk (Emeritus)

John E. Brandt
Murnane Brandt, P.A.

John Huss

Joseph Micallef
(Emeritus)

Bob Plaszcz
vice president,
Operations
United Hospital-
Administration

Jack Ritt
(Co-Chair)
North Star Bank

Joan Thompson
(Co-Chair)
Minnesota Wire

Steve Tredal, MD
United Hospital
Emergency
Department

Len Walsh

Jay Westwater, MD
United Hospital
Emergency
Department

Peter J. King Family Health Center's Grand Opening

Waiting for an appointment at United Family Medicine (UFM) at 545 West 7th Street could mean sitting next to well-dressed business executive or a homeless man who slept under a bridge the night before. The scene reflects the clinic's mission to provide excellent primary medical care to the entire community, regardless of the ability to pay.

And when UFM moves to the new Peter J. King Family Health Center at West 7th and Randolph, it will occupy a spacious, handsome building befitting its major role in the community.

"We're moving a great clinic to a great building," said Timothy Rumsey, MD, clinic staff member and life-long crusader for community clinics.

In June 2008, the Trustees of The Kresge Foundation approved a conditional grant of \$450,000 toward the construction of a new health center. This grant was made on a challenge basis to assist in raising the balance required to complete our campaign goal.

The Kresge Foundation felt the Center's plan will achieve our mission and strengthen our community. The Kresge Foundation also recognized the Center provides comprehensive, culturally-appropriate medical

services to the low-income and underserved residents, as well as stimulate community development and economic growth in our community.

UFM serves 12,000 patients, with 43,000 annual visits, and those numbers are expected to increase to 16,000 patients and 65,000 visits by 2014. UFM is an independent, non-profit community clinic classified as a federally qualified health center and offers a sliding fee discount to low-income patients and accepts Medicaid, Medicare and more than 400 insurance carriers. This enables the clinic to serve as a "medical home" for patients through all life transitions. That means patients "can stay at the clinic despite changing circumstances," said CEO Jeanne Bailey. "There's a constancy of care."

The medical home concept also means better coordination of each patient's care, wherever it's received, noted UFPHC Medical Director Jerry Montie, M.D.

"Our doctors follow patients to the hospital and back to the clinic again, which is unusual, but it's part of our vision for the medical home," he said. The idea is to replace episodic care delivered in "silos" with comprehensive, coordinated care and strong, ongoing patient-physician relationships.

One patient who has remained with the clinic through various stages of her life is Andrea Marboe, who also chairs the UFPHC Board of Directors.

"The clinic sees everyone, whether they're insured or uninsured, employed or unemployed, or whether they can go anywhere they want but choose to stay because of the strength of the service and their relationship with their physician," Marboe said.

The Peter J. King Family Health Center celebrates its Grand Opening on May 30, 2009.



United Family Practice's waiting area.

A Patient's Story: life after a stroke

Even with an achy head and upset stomach, Gladys Ritter didn't think much of the uneasy start to her day. Yet, while getting ready to leave for Pilates class, she suddenly dropped to the floor and her left arm went "loose". Then she knew it was something severe - it was a stroke.

That morning Ritter suffered a hemorrhagic stroke; the type of stroke that occurs when a blood vessel bursts inside the brain. Almost immediately she lost use of her left side, including arm and leg, and could not walk. She was able to get to the phone and call an ambulance. In the ambulance she requested to go to United Hospital, unknowing of its Nasseff Neuroscience Center of Excellence, Joint Commission accredited Stroke Center, and inpatient rehabilitation programs provided by the Sister Kenny Rehabilitation Institute.

"I was fortunate on so many accounts" said Ritter. "One being that I was able to get to the phone to call an ambulance and another that I chose to come to United. I didn't know about all the resources and expertise here, but people should know about it. The fact that I had a stroke doesn't make my experience stand out. A stroke can happen to anyone. My story is special not because of me, but because of the medical and rehabilitation professionals and resources I found all located here at United. When I got here, I couldn't even sit up, now I am walking." said Ritter.

Ritter arrived in United Hospital's Emergency Department. She did not need surgery, rather was transferred to the Intensive Care Unit (ICU). Ritter started receiving physical and occupational therapy at her bedside only one day after she was admitted to the ICU.

"Research has shown us early therapy intervention equals better outcomes. More and more, physical, occupational, and speech



The Bosu Ball is used in therapy for ankle stability and strength. It is just one of many gait and balance equipment pieces made available from funding through United Hospital Foundation.

therapy are treating patients post-stroke within days, if not hours, after their stroke," said Trevor Carlson, manager, Sister Kenny Rehabilitation Institute.

Ritter was eventually transferred to the hospital unit specifically for Sister Kenny patients. Sister Kenny's inpatient rehabilitation program is an intensive team-based program, with an emphasis on therapy.

Patients receive a daily rehab schedule that is customized to their individual needs, which may include speech, occupational and physical therapy, therapeutic recreation, and neuropsychological sessions. This comprehensive approach offers patients more independence, and an opportunity to restore their quality of life.

"Gladys' determination was an integral part of her rehab process and potential. She was open to trying multiple techniques to maximize her function, including balance

equipment recently purchased by the United Hospital Foundation. She also participated in a specific home program that addresses strength, flexibility and endurance and has surpassed expectations," said Christina Roling, physical therapist.

Since being discharged home, Ritter still receives therapy provided by Sister Kenny at United Hospital, but it is now on an outpatient basis where she continues to thrive. She recently traveled to Hawaii; a plane ride is a phenomenal feat considering when she first arrived at the hospital she was unable to even sit up.

Donor profile in giving: Michael Goff

Two heart attacks within just one week apart is what Michael (Mickey) Goff endured a little more than 10 years ago. Goff's first-hand experiences of dedication and sense of service, shown by staff members through his care, has prompted a generosity that helps ensure United Hospital leads the way in superior care for the communities we serve.

"They have a way of treating people. You're a little stressed when you come in and they are able to put you at ease and make you feel comfortable. It's a type of care you appreciate receiving and the staff doesn't feel like they are doing anything special, but they are," said Goff.

Goff, a life-long St. Paul resident, can also appreciate, on a professional level, the complexity of interacting with people during traumatic experiences. Goff has been in the insurance adjustment business, a field his grandfather Joseph Supornick helped establish, for more than 40 years. As an owner of D.J. Fretland & Associates, Inc., he routinely deals with companies or people who have lost major property or belongings due to fires, tornadoes or other disasters.

"In the insurance adjustment business we take over after major disasters and it can be a time of difficulty for people. In the hospital setting, it's a somewhat similar situation and my support is a way to say thank you because I appreciate their service based on both a professional and personal level."

Goff's support of United Hospital is visible throughout several services and facilities. He routinely works out at the Milton M. Hurwitz ExerCare Fitness Center and one day thought to himself why shouldn't ExerCare have just as nice equipment as any other fitness center.

His support of ExerCare helps allow the center to provide new equipment for its members



Mickey Goff

such as new treadmills, total body elliptical trainer, upright bikes and active motion trainers.

"Mickey's support and generosity to ExerCare, Cardiac Rehab and United Hospital make us a much more advanced facility. It allows us to stay up-to-date and maintain state-of-the-art equipment. Also, his support helps us provide exceptional care and customer service to our community. Without his support we would not be nearly as successful as we are," said Kris Coleman, BS, MBA, Operations Leader, Cardiac Rehab, ExerCare Fitness Center.

Celebrating 25 years

United Hospital Foundation celebrates its 25 year anniversary in 2009. Established in 1984, to help United Hospital meet the needs of patients, employees and members of the community, the Foundation formalized more than 150 years of philanthropy.

The United Hospital Foundation exists to enhance the health of United Hospital patients and wellness of the community it serves. Each year the Foundation works with donors to raise funds that help United Hospital and the community.

United Hospital Foundation partners with United Hospital to continue offering the latest and best in health care technology, training and facilities such as:

- Da Vinci S^{HD}™, Robotic Surgical System
- Nasseff Heart Center
- Peter J. King Emergency Care Center at United Hospital
- Peter J. King Family Health Center
- Lipschultz Guest Apartments
- Milton M. Hurwitz ExerCare Fitness Center
- Jesse Edwards Registry of Cardiovascular Disease
- East Metro Disease Initiative
- Partners for Violence Prevention
- Automated External Defibrillators
- iMRI
- Nasseff Neuroscience Center

thank you: Duke Adamski, United Hospital Foundation president notes the hospital continually sets new standards of care and pioneers new procedures. He is proud of the Foundation's role in those achievements and acknowledges none of it would be possible without the support of thousands of generous individuals.

Thank you to each and every one of our donors for your ongoing support. It is through your support that we will continue to offer the highest level of care available. The future of our community will depend on this long-lasting infrastructure.

Tomi Ryba becomes United Hospital president

Tomi Ryba joined United Hospital as its new president on February 17, 2009.

Prior to joining United Hospital, Ryba was the chief operating officer at the University of California San Francisco (UCSF) Medical Center. At UCSF Medical Center, Ryba was responsible for improving the quality, efficiency, and financial performance of inpatient and outpatient operations. She was also accountable for necessary infrastructure, capital equipment, and facilities planning. "Some of my own priorities are to make

sure our health care is of exceptional clinical quality, that it's easy to navigate and that it's all done with a priority on world-class service," said Tomi Ryba. "I'm also equally excited about working with the community leaders and thinking about what the community needs are and how we work as a community partner."

Ryba's extensive experience in academic medicine and the public sector also includes being president of St. Mary Medical Center in Long Beach, CA; chief operating officer of University

of Washington's Harborview Medical Center and chief executive officer of Riverside Regional Medical Center. She has been an active community leader involved in the Alternatives to Domestic Violence, Junior League and National Charity League organizations.

On a personal note, Ryba's move to Minnesota was a bit of a homecoming for her and her family. Since they have family members in Minnesota, North Dakota and Iowa, they already "knew and loved the area".

Service to Humanity Gala

The Service to Humanity Gala is St. Paul's premier event bringing more than 1,500 people together at the St. Paul RiverCentre every September.

This glamorous evening includes a signature martini reception, silent auction, gourmet dinner, live auction, car raffle, awards ceremony and dancing to music by the legendary music group, the Seville's. Since 2003, more than \$6,000,000 has been raised to benefit the Nasseff Neuroscience Center, Peter J. King Family Health Center and Peter J. King Emergency Care Center at United Hospital. The Gala is ranked sixth-out of 25 metro area fundraising events ranked by gross revenue.

HOW YOU CAN HELP WITH THE LIVE AND SILENT AUCTION

Every year more than 600 items are donated to the live and silent auction by individual donors, corporations and local businesses. If you are interested in donating or soliciting for

the silent auction, see the categories listing for examples of auction items. For delivery or drop-off please contact the Foundation at 651-241-8022.

- Live Auction
(luxury cruises, cars, european trips)
- Art or Theater
(tickets to the Ordway or MN Orchestra)
- Dining/Catering Events or Wine/Liquor
(restaurant gift certificates)
- Children's Items
(clothes, electric cars or other toys)
- Home Decor/Entertainment/Kitchen/Electronics
(cookware, creative theme baskets, misc.)
- Health, Beauty and Fitness
(salon/spa gift certificates or beauty baskets)
- Jewelry
(necklaces, earrings, bracelets)
- Lodging/Travel/Trips/Transportation
(donating timeshare or cabin for a week or hotel stays)
- Sporting/Outdoors
(sports memorabilia, sporting event tickets or outdoor/camping items)

Your auction donations will ensure a fun and successful event.

THE UNITED HOSPITAL FOUNDATION IS PROUD TO ANNOUNCE THE 2009 SERVICE TO HUMANITY HONOREES



Merry DeCourcy



Todd Hess, MD

The Service to Humanity Award is presented to individuals associated with United Hospital who have demonstrated selfless dedication and exemplary leadership in improving the health and welfare of Saint Paul residents and communities we serve.

Merry DeCourcy, this year's community honoree, is a board member of United Hospital Foundation, past co-chair of the Gala, past chair of the gala auction and a special friend of United Hospital Foundation.

Todd Hess, MD, this year's physician nominee, is the Medical Director of United Pain Center and an anesthesiologist specializing in pain management. Dr. Hess also serves as a Pain Medicine consultant to the MN Board of Medical Practice and MN Attorney General and is a frequent national lecturer on Pain Medicine.

2009 United Hospital Foundation Events

Philanthropy is critical to both maintaining and further developing United Hospital's leadership position in health care delivery in our community. To that end, the United Hospital Foundation helps sponsor and participate in numerous events to promote fundraising.

Event information is available by visiting www.unitedhospital.com/unitedfoundation or calling 651-241-8022.

Mark your calendar!

2009 United Hospital Foundation events:

- | | |
|----------------------|--|
| July 6-12: | 3M Senior PGA Championship
Tournament Players Club, Blaine |
| July 27: | United Hospital Golf Classic
White Bear Yacht Club, White Bear Lake |
| September 26: | Service to Humanity Gala
RiverCentre, Saint Paul |

United Hospital Golf Classic

Established 19 years ago, the United Hospital Golf Classic has a long tradition of being an exceptional amateur golf event, indeed one of the best.

The United Hospital Golf Classic, sponsored by McGough Companies, is set for July 27 at the White Bear Yacht Club. Participants receive tournament clothing, guest gift bag and will enjoy lunch, 18 holes of golf (the raw beauty of the course makes it one that

participants never tire of playing), course contests, hole in one-win a car from Sears Imported Autos, high-quality items raffle and award reception. Proceeds benefit the Peter J. King Emergency Care Center at United Hospital (see page 3).

Individual and sponsorship opportunities available – contact Cindy Early at 651-241-8027.



Service to Humanity Gala-25 year anniversary

Get ready for yet another fabulous Gala event on Saturday, Sept. 26 at the Saint Paul RiverCentre!

This year's Gala features a raffle for a Mercedes-Benz GLK 350 4MATIC from Sears Imported Autos (see page 12). Plenty of other wonderful items will be available in both the live and silent auctions, including trips, cruises, art, children's items, lodging, dining and sporting goods!

This year's Gala is co-chaired by Song Lo Fawcett, Esq., Fawcett Law, and Kris Taylor, Director, Community & Public Relations for Ecolab, Inc. Both are board members of United Hospital Foundation. The gala

auction is chaired by Julie Larson, Executive Director; Roseville Visitor Association.

Proceeds from the Gala will benefit the Peter J. King Emergency Care Center at United Hospital expansion effort (see page 3). Your sponsorship and silent or live auction donations will ensure another successful event.

For more information, please contact David Byrd, United Hospital Foundation, at 651-241-8025.



Win a Mercedes-Benz GLK 350 4MATIC

Service to Humanity Gala

celebrating
years
25
Service to Humanity
Gala



PRIZE

2010 Mercedes-Benz GLK 350 4MATIC, Estimated MSRP \$47,395 Silver exterior, black leather interior, Premium package, sunroof and wood trim, Multimedia package with rearview camera, voice recognition, Sport appearance package with 20" 7-spoke alloy wheels, 16/22 MPG.

No more than 1,500 tickets to be sold.

Proceeds to benefit the Peter J. King Emergency Care Center at United Hospital.

Drawing held Sept. 26, 2009, at the Service to Humanity Gala at the St. Paul RiverCentre.

GET YOUR TICKETS

Tickets: 1 for \$100 or 3 for \$250
Make check payable to United Hospital Foundation
Credit cards are not accepted.

Mail to: United Hospital Foundation
333 North Smith Avenue, Saint Paul, MN 55102

Call: 651-241-8022 for tickets or more information

Visit: www.unitedhospital.com/unitedfoundation

License No.: X-35475

The winning vehicle may be slightly different than the vehicle pictured.

To reserve your tickets, please complete the following:

Check one: ☐ 3 for \$250 ☐ 1 for \$100

____ Tickets (individual) x \$100= _____

____ Set (set of 3 tickets) x \$250= _____

Total= _____

Name _____

Address _____

City _____

State _____

Zip _____

Phone _____

E-mail _____

Sears
Imported Autos

www.searsimports.com



UNITED HOSPITAL
FOUNDATION

Meet the Board: Helene Houle and Jim Kowalski

Helene Houle, a long-time St. Paul entrepreneur and philanthropist, joined the United Hospital Foundation board in 2001 furthering an already deeply rooted dedication to the east metro community.

Houle, who grew up on a farm outside the metro area, moved to the east side of St. Paul with her sister when she was 17 years old. She paid her way through beauty school by working as a waitress. Upon graduation, she worked at salon in Highland Park and just one year later, Houle went into business for herself and opened her own salon. What followed was a more than 30-year career as a successful business owner and operator.

Houle became affiliated with United Hospital through work with the development of the John Nasseff Heart Hospital. Afterward she joined the United Hospital Foundation Board and has been heavily involved in the Service to Humanity Gala.

“I really have enjoyed everything that I have been involved with at United Hospital. But even more, it is very fulfilling knowing your efforts, no matter how simple they may seem, can really make a difference. I still remember at one of my first board meetings they presented some equipment the hospital was considering purchasing. There was another version that had slightly more capability and I asked why wouldn’t we purchase that piece instead. That spurred discussion and we ended up purchasing the equipment offering full capabilities,” said Houle.

Along with being a Board Member, Houle chaired the 2004 Service to Humanity’s silent auction and her efforts helped grow the auction into what it is today. Houle also co-chaired, with Merry DeCourcy, the 2006 Service to Humanity Gala; one of the most



Helene Houle

successful Galas in both terms of attendance and funds raised. Houle has been a Service to Humanity honoree and named United Hospital Foundation’s 2007 Trustee of the Year award for her longtime dedication and commitment.

In addition to her work with United Hospital, Houle has been involved in several other charitable organizations and causes. She has supported her elementary school, St. Anne’s in Wisconsin and has funded a girl’s dorm in Mexico. She was also invited by Governor Pawlenty to be a part of the Governor’s Residence Council Board, serves on the Schubert Club board of directors and is involved in many ways with Little Friends Orphanages.

Meet the Board: Helene Houle and Jim Kowalski continued

Jim Kowalski knows what it takes to run a successful service oriented business. And that's why he's so passionate about customer service in health care.

Since he began working at a Snyder Drug Store in 1964, which was later purchased by Red Owl Company, Kowalski has been building a legacy in the Twin Cities grocery landscape.

More than 40 years after his first grocery gig, Kowalski now co-owns, with his wife Mary Anne, eight Kowalski's Markets, a Cub Foods, a central bakery and transportation facility, and has minority ownership in three other Cub Foods stores.

While running a successful grocery business, Jim is also extremely involved in the community, including United Hospital. As President of the United Hospital Foundation Board, Jim has focused his time and energy on ensuring United's new Emergency Department will be more than state-of-the-art technology, it will include world-class customer service and care.

"Our goal is that everyone is seen immediately in the Emergency Department and our focus is on a new patient experience," said Jim. "This is an exciting and important time for United Hospital to become the leader and set the standard for how patients and families are cared for in an emergency."

Kowalski knows what type of service models work when running a successful business. His personal approach to business keeps him intricately involved in the daily workings of the markets.

On any given day you can find him meeting with local growers, overseeing the salmon harvest in Alaska for his stores, or chatting



Jim Kowalski, chairman, United Hospital Foundation, Board of Directors

with customers about what's important in their lives. If the day is beautiful though, look for Kowalski doing business on the golf course instead of the grocery aisle.

Stocked full of love: Dorothy Schadeegg's volunteer story

A baby born during the Christmas holiday is definitely the best of presents and 99 year-old volunteer Dorothy Schadeegg makes sure these special deliveries are welcomed with the full holiday spirit.

For the last 20 years, Schadeegg has sewn Christmas stockings for the babies born at United during the Christmas week.

Meeting her holiday deadline requires approximately 50 hours of sewing with an electrified Singer machine to 60-70 stockings during the fall.

Schadeegg is one of United's most dedicated volunteers and still comes weekly to volunteer at the hospital.



Dorothy Schadeegg sits with some of the 85 stockings she has sewn for babies who were born at United on Christmas week.

2008 health care recognitions

STROKE CENTER OF EXCELLENCE RECERTIFICATION

granted by the
Joint Commission

MINNESOTA HOSPITAL ASSOCIATION PATIENT SAFETY EXCELLENCE AWARDS

awards received in these areas:

- Safe Count
- Safe from Falls

BLUE DISTINCTION CENTER FOR CARDIAC CARE

granted by BlueCross BlueShield of
Minnesota



Jesse E. Edwards Registry update



Emily Duncanson, MD, joined the Jesse E. Edwards Cardiovascular Registry in Fall 2008.

The Cardiovascular Registry has been very busy carrying on the work of Dr. Jesse Edwards. The Registry continues to provide consultative services to cardiologists, cardiac surgeons and pathologists, provides educational opportunities in the field of cardiovascular disease and participates in research projects investigating these conditions.

Business at the Registry has increased dramatically because of the rising number of hearts sent for examination after the heart valves have been removed and processed for use during heart valve replacement surgery. To that end, Dr. Emily Duncanson was recently recruited from the New York City Office of the Chief Medical Examiner to help Drs. Shannon Mackey-Bojack and Susan Roe with this and all Registry-related work.

Dr. Duncanson is a native Minnesotan and graduated from the University of

Minnesota Medical School. She completed her residency in anatomic pathology at New York-Presbyterian/Weill Cornell Medical Center and forensic pathology, forensic neuropathology and cardiac pathology fellowship training at the New York City Office of the Chief Medical Examiner.

Dr. Duncanson was familiar with the Registry after completing multiple rotations there during her training, and was eager to return to Minnesota.

Through her work at the Registry, Dr. Duncanson hopes to contribute to the continued advancement of cardiovascular interventions, new knowledge about sudden cardiac death and to participate in the ongoing research to improve the technology of human valve grafts.

United Hospital Foundation approves grant for Guest Services in Emergency Department

The United Hospital Foundation Board of Directors unanimously approved a grant for funding the Guest Service team presence in the Emergency Department (ED).

The Guest Service team provides exceptional customer service in the Emergency Department by welcoming, rounding and escorting patients and guests. They identify and solve guest service issues by acting as a liaison between ED staff, patients and guests. This new project will truly distinguish our emergency care by reducing anxiety for our patients and their families.

"We can positively impact patient and guest satisfaction by providing waiting families with consistent and professional services while patients receive care in the Emergency Department."

-Pat Hanzal, Volunteer Services Manager, United Hospital

United Hospital's Emergency Department will be the best-in-class and best-in-practice in its design functionality and efficiency with a focus on patient experience and customer service.

Meet the Experts program for Summit Society members

Meet the Experts is a wellness health benefit offered to Summit Society donors and their guests. It includes health topics that are recommended by donors during the annual donor interest survey.

The 2008 donor education series ended in November with a very interesting presentation by Lee Toman, MD. His topic was Sepsis-A Ghost in the Room. Sepsis means infection and it is the leading cause of hospital mortality. The largest contributor in this category is pneumonia.

Sepsis is a widespread reaction in the body to some type of infection that leads to the clogging and leakage in the smallest blood vessels. It can result in shock and loss of blood supply to all major organs leading to organ failure and death.

Early recognition and treatment can reduce mortality by 35%, but diagnosing it is somewhat difficult and includes such factors as increased breathing, increased heart rate, high fever or low temperature and/or increased

white blood cell count. You can help yourself by reporting all your symptoms to the physician such as any known infections, fevers, chills, weakness, dizziness, lethargy, confusion, aching, headache, sore throat, cough, nausea, vomiting diarrhea, rash etc. Let your doctor decide what is important and don't miss telling them everything they need to know to treat you and avoid any septic illness.

This past February Todd Hess, MD, talked about chronic pain management which will be featured in the next issue of the newsletter.

The calendar for *Meet the Experts* in 2009 will include: a talk about Diabetes in May, a presentation about Emergency Medicine in August and an encore presentation about automated external defibrillators in November.

The Summit and Rogers Societies are composed of community members who support United Hospital with annual gifts of at least \$1,000 or \$500, respectively.

For more information, please contact Phil Sutherland, development officer, United Hospital Foundation at phil.sutherland@allina.com or 651-241-8026.

Alumni Club news

Membership enrollment letters were recently sent to current members and former United Hospital employees to join this great new service club. The mail is still coming in and it looks like a good number of former employees will be joining the fun again this year.

For example, club members enjoy educational lunch programs in conjunction with the Summit Society from time to time.

This club helps the foundation reach the financial needs of the hospital by working as volunteers at the Gala, United Hospital

Golf Classic Tournament and other employee events.

We want to thank Val Harshe for her work as the first president of the group. She played an important role making the creation of the club successful from the start. A date for election of a new president will be set soon.

Please contact the foundation office for more information about joining the United Hospital Alumni Club or to learn more about the events planned for 2009. Membership is still open to members of the United/Children's Employee Club of 2007, too.

Strategies for Giving

Consider this: someone's generosity permeates every facet of our lives. Certainly United Hospital Foundation's programs benefit from such acts of kindness.



Richard J. Olson

Charitable gifts help United Hospital Foundation meet its current goals and reach farther in the future. By giving wisely, you can achieve that same outcome, too.

Your gift can take multiple forms and can help you address a variety of personal financial goals. Do you want to make a significant gift during your lifetime, or would a gift as part of your estate work better? Do you have a particular asset that you are thinking of donating? Do you want to increase your retirement income, or is your primary goal estate preservation? Are you carrying excess life insurance or a large balance in your retirement plan?

Recently, United Hospital Foundation Board Member Peter Michalowski decided to make a gift to the United Hospital Foundation in his estate plan. Peter summed up the reason behind his estate gift in a few meaningful words, "United Hospital has a very special place in my heart, no pun intended." This quote is directly related to the preventative medical work Peter had done at United Hospital. In 2003, Peter underwent valve replacement surgery. During a routine physical it was determined Peter had a congenital birth defect. Had he not undergone valve replacement, the stress would have been too much on his heart and he probably would have suffered cardiac arrest. This procedure saved his life and has allowed his wife, Joan Hackel, and him to spend time at their homes in Woodbury and LaQuinta, where they enjoy a very active lifestyle.

The United Hospital Foundation staff is ready to work with you and your advisors to craft

the gift plan that satisfies you. Please contact Richard J. Olson at 612-262-6063 or e-mail at Richard.Olson@allina.com. Richard can advise you on:

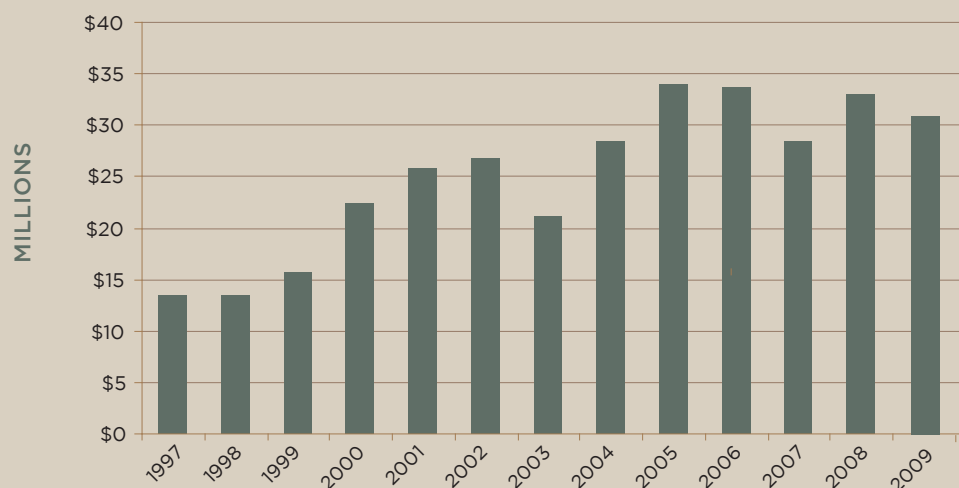
What gifting strategies will work best. Which options will help you reach your goals while best suiting your giving capabilities. How to weigh your options in deciding to make a gift: Should you give now, or give later? What assets to give? How can a gift pay you back? What are your choices in income gifts?

In addition, you will join a select group of people in the United Hospital Foundations' Heritage Society (see page 42). This group of donors has made the wonderful decision to make a planned gift to benefit United Hospital. A gifting decision that is based solely on your time line and what you decide will be your legacy at United Hospital.

2008

Financial Summary

Assets at Beginning of Year



It is important that every not-for-profit organization is in compliance with all of the regulatory agencies that are responsible for monitoring their activities.

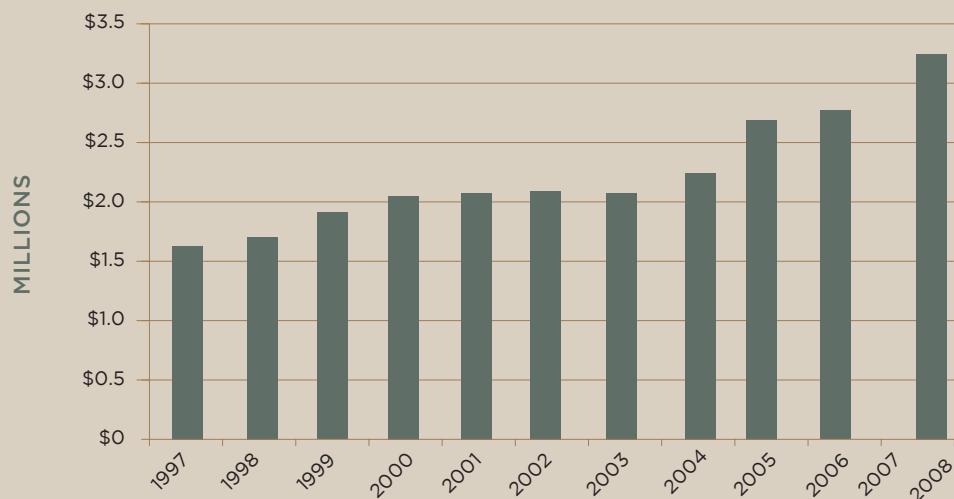
We are pleased to announce that we are 100 percent compliant.

In 2008, the United Hospital Foundation completed the following compliance audits.

- Federal IRS audit
- LarsonAllen, LLP audit
- Internal hospital audit

You can feel confident that our board of directors are excellent stewards of your donated money.

Annual Giving



2008

Financial Summary continued

Corporate Matching Gifts

We wish to thank the following companies and foundations that match individual contributions to United Hospital Foundation.

Please check with your human resource department to find out about your company's matching gift policy.

The Saint Paul Companies Inc.

American Express Foundation

US Bancorp Matching Gift Program

TCF National Bank

Agribank, FCB

Johnson & Johnson

Saint Jude Medical Inc.

IBM International Foundation

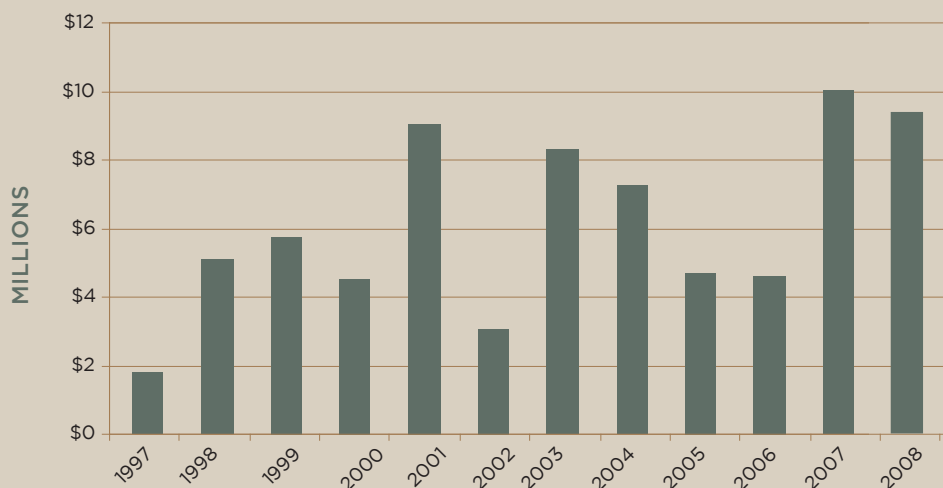
E-Funds Corporation

Computer Associates

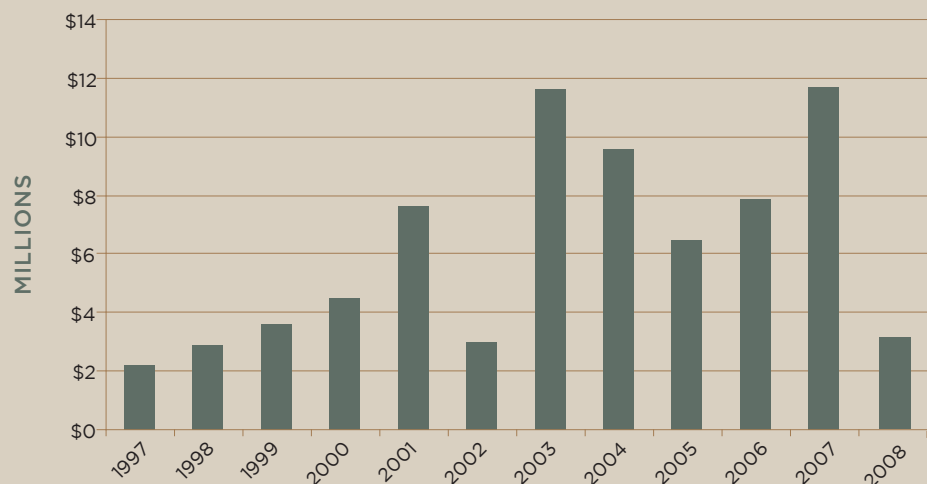
ING Foundation

GMAC-RFC

Total Contributions



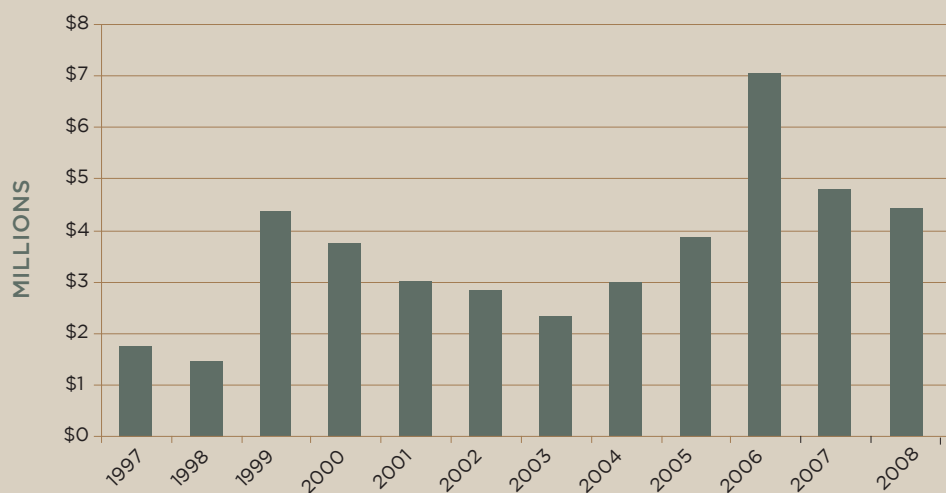
Total Income



2008

Financial Summary continued

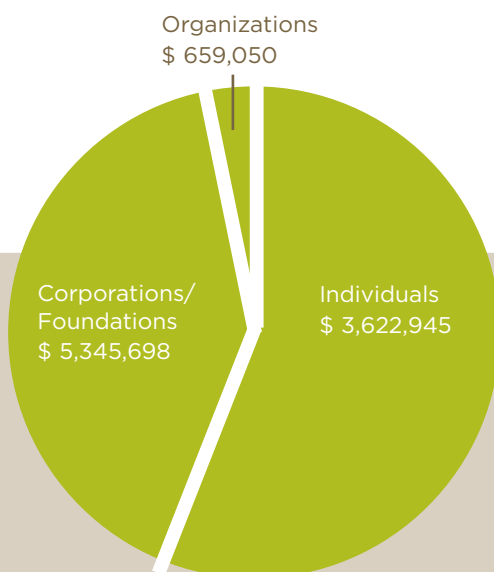
Grants and Allocations



Sources of 2008 Donations

Total Given: \$9,627,693
Number of Gifts: 14,655
Number of Donors: 12,015

This is unaudited
financial information.



2008

United Hospital Donors

The following pages pay tribute to all those who supported United Hospital through donations to the Foundation. The Diamond, Emerald, Sapphire, Platinum, Gold, Silver and Bronze categories reflect life-time cumulative donations to the Foundation. The remaining categories reflect cumulative gifts of \$100 and more to the Foundation between Jan. 1 and Dec. 31, 2008. Together in 2008, 12,015 donors gave \$9,627,693 to make a difference in the lives of patients and families we serve. It is with great appreciation that we recognize them.

Diamond - \$1,000,000+

3M Championship
3M Foundation, Inc.
Allina Foundation
The Bentson Foundation - Larry and Barbara Bentson
Arthur G. Driscoll Trust
Edwards Memorial Trust
John and Dolores Holl Estate
Hubbard Foundation
Peter J. King Family Foundation
Elaine S. Larson
McGough Construction Company, Inc. - McGough Foundation
John Nasseff and Helene A. Houle

Emerald - +\$500,000 +

3M Company
Allina Health System
F.R. Bigelow Foundation
City of St. Paul - Dept. of Planning and Economics
Ruth Lawson
The Lawson Family
John and Mary Ritt
The Saint Paul Foundation
Saint Paul Heart Clinic, P.A.
United Hospital Gift Shop
United Hospital Medical Staff

Sapphire - \$100,000 +

AGA Medical Corporation
Andersen Corporate Foundation
Hugh J. Andersen Foundation
Mr. and Mrs. Sidney Applebaum
Associated Anesthesiologists, P.A.
Mrs. Harvey O. Beek Estate
Carol A. Bierbrauer
Cardiac Surgical Associates, P.A.
Charlotte Janssen Interim Trust
Bruce F. Church Estate
East Metro Radiation Oncology Associates, PLLC
The Estate of Wyllene Pearson Marks
Mr. and Mrs. David R. Frauenshuh
Elsie Geiss Estate
Greater Twin Cities United Way
Hardenbergh Foundation
Mrs. Margaret Harmon
Clara Louise Harris Estate
Nancy Ottis Harris Estate
Marshall and Elizabeth Hatfield
HDR, Inc.
Elsie Hill
Louis F. Hill
Louis Hill, Jr.
Ruth and John Huss
Huss Foundation
Katherine B. Andersen Fund
Knutson Construction Services
Komen Breast Cancer Foundation
James G. Lindell

Mrs. Samuel (Ruth) Lipschultz
Mardag Foundation
The McKnight Foundation
MEDICO Life ProAm Golf Tournament
The Medtronic Foundation
John and Karen Meslow
Metris Companies, Inc.
Minnesota Department of Children, Families and Learning
Minnesota State Department of Health
The John M. & Susan Morrison Family Foundation
Mrs. Virginia L. Mullaney and Mr. Frank C. Mullaney
Lorraine C. Murphy
Nasseff Mechanical Contractors, Inc.
Northwest Area Foundation
Mr. and Mrs. John G. Ordway, Jr.
Margaret M. Ordway
Otto Bremer Foundation
Our365 Share More
Lewis and Annie F. Paper Foundation
Partners for Violence Prevention
PGA Golf Course Properties
Carl and Eloise Pohlad Family Foundation
Shirley Pond Estate
Ramsey County Warrant
Paul and Irene Rifkin
Clayton L. Robinson
The Rodman Foundation

Carol E. Andersen and William H. Rubenstein
Saint Jude Medical, Inc.
Saint Paul Radiology, P.A.
Ann J. Fee Appert Shiely
Gertrude R. Shiely
St. Paul Heart Clinic, P.A.
St. Paul/Ramsey County Children's Initiative
State of MN, Department of Finance
Ms. Elvera Stauffacher
Travelers Foundation
United HealthCare Corporation

Platinum - \$50,000 +

Duke Adamski
Dr. and Mrs. Kit V. Arom
ATS Medical, Inc.
Barbara and Dan Balik
Boston Scientific Corporation
Mr. and Mrs. Robert H. Bratnober
Elinor Brodie
John Brodie
The Bush Foundation
Cal and Bev Calvin Calmenson
Robert Chandler, Jr.
Claude M. Anderson Electric Co., Inc.
Community Employment Partnership
Community Shares of Minnesota
Merry and Michael DeCourcy
Doherty Rumble & Butler, P.A.

2008 United Hospital Donors

Mr. and Mrs. Carl B. Drake, Sr.
Charlotte Drake
The Driscoll Foundation
Dr. and Mrs. Jesse E. Edwards
Employees of Ecolab
Mr. and Mrs. Richard A. Engen
Falls & Nyhusmoen
Construction, Inc.
Mina Fergestad
Michael Goff
John B. Goodman
Grotto Foundation Inc.
John G. and Alice L. Harrison
HealthEast
HealthPartners
Todd M. Hess, M.D.
Stan and Doris Hill
The HRK Foundation
Mr. and Mrs. Robert E. Hunstad
Ideacom Mid-America, Inc.
Jasc Software, Inc.
Jay and Rose Phillips Family
Foundation
Craig and Patricia Jilk
Mr. and Mrs. Lynn W. Johnson
Nasser Kazeminy
Dr. Jerone and Penny Kennedy
Knight Foundation
Kraus-Anderson Construction Co
Richard Leven Trust
Bill and Sybil Lipschultz
Mrs. Jean R. Ljungkull
Harvey Lubov
Minnesota Center for Crime
Victims & Services
Merrick Community Services
Minneapolis Cardiology Associates
Minnesota Epilepsy Group, PA
Minnesota Medical Foundation
Minnesota Wire
Mrs. John Miller Musser
Mr. and Mrs. Arthur J. Nasseff
Mickey Nasseff
NewMech Companies, Inc.
Olmsted County
Dwight D. Opperman Foundation
Frank E. & Seba B. Payne
Foundation
Peoples Electric Company
George Power, Jr. Estate
Prom Management Group, Inc.

RBC Wealth Management
Darwin R. and Geri J. Reedy
Paul and Irene Rifkin
Ritt Family Foundation
Sears Imported Autos Inc.
Summit Orthopedics, LTD.
Sun Orchard
The Elena Melius Foundation
Mr. and Mrs. Edward R. Titcomb, Jr.
Robert D. and Roberta R. Topness
United Hospital Administration
United Hospital Auxiliary
Wells Fargo Bank Minnesota, N.A.
Wozniak Family Foundation
Xcel Energy, Inc.

Gold - \$25,000

3M - Medical Surgical & Skin
Health Divisions
Charles F. Alexander, III, M.D.
Sarah J. Andersen
Associated Bank
Aventis Pharmaceuticals
Martin and Ramona Barrett
Baxter Healthcare Corporation
Drs. Margaret M. and
J. Randolph Behars
Berwald Roofing Company, Inc
Big Top Liquor Store
Rachel Hill Boechmann
Martin and Esther Capp Foundation
The Cargill Foundation
Jeffery Carlson
Mr. and Mrs. Hollis E. Cavner, Jr.
Coldwell Banker Burnet Realty
Deluxe Corporation Foundation
Olivia Dodge
Mary E. Dunn, M.D. and Gregory F.
Cotterell, M.D.
Curtis E. and Debra D. Enestvedt
Debra D. Enestvedt
Kathryn Farniok, M.D. and Erik
Engelbretson
David E. Feinberg
Felhaber, Larson, Fenlon & Vogt
First National Bank of Hudson
James Flink, M.D. and Diane Uecker-
Flink, R.N.
Frauenshuh Companies
Garelick Family Foundation
Bruce, Karen, and Charlie Gershman
Goodin Company
Sherrie and Gregory A.
Granrud, M.D.
Mary Livingston Griggs and Mary
Griggs Burke Foundation
Gross-Given Manufacturing
Company
Richard B. Guthrie, M.D.
Sarah J. Andersen and
Christopher Hayner
Anna M. Heilmaier
Charitable Foundation
Dr. Ken and Linda Holmen
Roy Hope, M.D.
Hospital Pathology Associates, PA
Mary L. Huberty
Dr. and Mrs. Milton Hurwitz
Ideacom Mid-America, Inc.
Intuitive Surgical, Inc.
Marc S. and Judy Isaacs
Dr. and Mrs. Kenneth L. Jue
Mrs. James E. Kelley
Margaret H. Kelley
Russell S. King
Norma L. Larson
Lawson Software
Mr. and Mrs. Charles L. Leavitt, Jr.
Helen Leavitt
R. C. Lilly Foundation
Lockridge Grindal Nauen P.L.L.P.
The Harvey Lubov Charitable
Lead Trust
Gertrude Maiden
George G. Mairs Family Fund
The Thomas G. Mairs and Marjorie
P. Mairs Fund
Maslon, Edelman, Borman & Brand
Teresa and Bob McMahon
Medtronic, Inc.
Gary Melius
Metropolitan Medical
Center Foundation
Michaud, Cooley,
Erickson & Associates
Zondal & Esther Miller 1996
Charitable Remainder Unitrust
Minnesota Mutual Foundation
Mark and Joan Mishek
Lucille Moeller
LeVonne Mulrooney
Dean K. Murray
Art and Susan Nasseff
Mary Ann and Ed Newman
Northern Lights League

Northwest Airlines Inc.
Northwestern Bell
Gene and Bonnie Nugent
Douglas Olson, M.D.
Fane W. and Corie A. Opperman
Vance and Darin Opperman
Opus Properties LLC
John G. Ordway
Frederick M. Owens, Jr., M.D. and
Lucy T. Owens
Richard R. Pettingill
Piper Jaffray, Inc.
The Potish Family
Rosella Qualey
Ramsey County Human Services
Resources for Child Caring
Robins, Kaplan, Miller & Ciresi,
L.L.P.
Saint Paul Lung Clinic, P.A.
John P. and Linda Schroepfer
Drs. Richard D. and
Barbara W. Shank
Cy and Vi Sheehy
The Shepard Family Foundation
Mr. and Mrs. Arthur Shuster
Mr. and Mrs. Sam Singer
Mrs. Vernon D. E. Smith
St. Paul Radiology Foundation of the
Saint Paul Foundation
Dr. and Mrs. P. Thienprasit
Thomson Reuters
Dr. and Mrs. Victor H. Tschida
Thomas and Dawn Walrath
West Seventh Community
Center, Inc.
Patricia Whitacre
Cornelius W. Wiens
Elizabeth A. Wiens
Mr. and Mrs. Teddy Wong

Silver - \$10,000

Abbott Laboratories
Paul M. Abbott
Dr. and Ms. Stuart W. Adler, M.D.
Adolfson & Peterson Construction
Alaska Tree Tops Fishing Lodge
American National Bank & Trust
America's PPO/HealthEZ
Andersen Consulting
Lee R. Anderson Family Charitable
Foundation
Mary Anne Anderson

Nancy J. Anderson	Drs. Rene P. duCret and Susan Roe	Dr. and Mrs. Douglas B. Ketcham	Peter W. Michalowski
Gerald and Virginia Armstrong	Dr. and Mrs. David N. Dunbar	Key Investment, Inc.	Midcontinent Media, Inc.
Charles and Marjorie Avoles	Eagle Elevator Corporation	Lianne M. King	Victoria M. and George E. Miller, M.D.
Dr. and Mrs. Kenneth W. Baran	Mr. and Mrs. G. W. Egermayer, Jr.	Cheryl Kirchner	Gladys & Rudolph Miller Foundation
Linda and Robert Barrows	Dr. Blake and Mary Jo Elmquist	Mark J. Kleinschmidt	Dr. and Mrs. Zondal R. Miller
Estate of Helen Bauer	ExerCare Fitness Center	Mr. and Mrs. Hess Kline	Minnesota Gastroenterology, P.A.
Peter R. Bauer	Leo F. Feeney	Dr. and Mrs. Joseph J. Klugman	Minnesota Life Insurance Company
Jonathan T. Berget, M.D.	Peter E. Fehr, M.D.	Dr. and Mrs. Thomas A. Koelz	Minnesota Oncology Hematology, P.A.
George S. Bergh	Dr. Dan and Lyn Foley	Patrick T. Koller, M.D. and Tammy A. Chiesa, M.D.	Minnesota Sports and Entertainment
Eugene R. Berwald	Clarence Frame	Robert J. Kosec	Minnesota Twins Baseball Club
John and Andrea Bien	Benjamin Fuller, M.D.	James S. and Mary A. Kowalski	MN Coalition Against Sexual Assault
Phillip J. Bifulk	Gastroenterology Consultants, P.A.	Kowalski's Woodbury Market, Inc.	Dan and Tammy Mott
Mrs. Alexandra O. Bjorklund	Genentech, Inc.	Virginia A. Kraus	Joseph Murray, Jr.
Boston Scientific	Gillette Children's Specialty Healthcare	Gary R. Kravitz, M.D. and Anna E. Schorer, M.D.	The Myers Foundation, Inc.
Briggs and Morgan	GlaxoSmithKline	Robert Larson	Katherine B. Nason
Richard Brody, M.D. and Margaret Flynn	The Arthur and Constance Goodman Family Foundation	Darren Lawson	William K. Natale
Mr. and Mrs. Steve C. Bryant	Mr. and Mrs. Stanley B. Goodman	Le Jeune Investment, Inc.	National Speaking of Women's Health Foundation
Luella Buetow	Greenhaven Printing	Mr. and Mrs. Robert Leech	Dr. and Mrs. Demetre M. Nicoloff
Edwina and Raymond Burrows	Mr. and Mrs. Pierson Sandy Grieve	Mr. and Mrs. Larry Lehmkuhl	Mr. and Mrs. Roger F. Noreen
BWBR Architects	Mr. and Mrs. Reynolds Guyer	Roger R. Lenzmeier	North Star Bank
Jerome G. Byrnes	Elias and Grace Haddad	Dr. and Mrs. Leonard H. Levitan	Hoyt W. Nye, M.D.
Mr. and Mrs. Ben B. Calmenson	Dr. and Mrs. James W. Haight	Dr. and Mrs. F. B. Lewis	S. Rhiannon O'Connor
Mary D. Cannon	Dr. Dennis and Joyce Halbe	Dr. and Mrs. Charles Lick	Douglas Olson, M.D.
Centocor	Jerome M. and Marice L. Halper Family Foundation	Mrs. Drake Lightner	The Dwight Opperman Foundation
Central Parking System	Mrs. Marice L. Halper and Mr. Robert Rubenstein	David M. Lilly	Opus Corporation
Church of St. Anne	Bruce E. Hanson	Mr. and Mrs. Albert Lindeke, Jr.	Mrs. Richard Ordway
The Cities' 97 FM	Pat and Al Hanzal	Dr. and Mrs. Robert E. Lindell	Owens & Minor
City of Saint Paul	Jennifer Harrington, M.D.	Linen Effects, Inc.	PCL Construction Services
Clara Claussen	The Harris Foundation	Erma G. Lipschultz	Penn State University
Frieda Claussen	Robert Haugan	Thomas F. Luse	Mr. and Mrs. Anthony L. Penque
Dr. Charles Cliffe and Mrs. Elizabeth Cliffe	Dr. and Mrs. Charles W. Hauser	Lyndale Garden Center	Deniz A. Perese, M.D.
Tony, Kathy, Kimberly and Andrea Clinch	Priscilla A. Hedberg, M.D.	Michael Madison, M.D.	Mary C. Petracek
Commonwealth Electric of Minnesota, Inc.	Helen Sperry Lea Foundation	Dr. and Mrs. Jeffrey E. Magnuson	Mr. and Mrs. William M. Podas
Stephanie Cook	David F. Herr	Mairs and Power, Inc.	Mr. Richard C. Radman
Dr. Victor A. and Brenda Corbett	Hill-Rom	George A. Mairs, III	William S. Reiling
Bert Cross	Hobbit Travel	Mr. and Mrs. Edward N. Mansur, Jr.	Georgiana S. Reny
Daly, Corbett, Ogden, Abid & Olive	Mr. and Mrs. A. D. Hulings	Dr. and Mrs. John B. Marta	Mary Rice
Mrs. Edwin M. Davis	Patricia M. Hunstad	Dr. and Mrs. Reid A. Martinson	Margaret Rivers Fund
George Dejmek	David D. Jaeger, M.D.	Mr. and Mrs. Hillard M. Marver	Robert D. Roettger
Deloitte and Touche	Charlotte and Martin Janssen	Theresa T. McCarthy Trust Estate	Ruth and Norman Rose
Neil M. Derechin, M.D.	Dr. and Mrs. Randall K. Johnson	Thomas and Mary McKeown	Rosenquist Construction, Inc.
Dr. and Mrs. Mark T. Destache	Dr. and Mrs. Thomas E. Johnson	McNeely Foundation	Mr. and Mrs. Kennon V. Rothchild
Kathleen DiGiomo	Thomas H. and Kristen E. Johnson	Dr. and Mrs. Eric A. Melum, M.D.	Dr. and Mrs. David A. Rothenberger
Mr. and Mrs. Thomas A. Dosland	David B. Jones, Jr. and Julie A. Jones	Merck & Company, Inc.	John J. Rowan
Downtowner Woodfire Grille	James R. Jordan	Dr. Robert and Mrs. Charlotte T.L. Merrick	Steven M. and Wendy H. Rubin
Harry Drake	Ione N. Kadden	Metropolitan Urologic Specialists, P.A.	Dr. and Mrs. Timothy J. Rumsey
Mr. and Mrs. W. John Driscoll	Joseph L. Kapla, M.D.	Rita M. Meyer	Dr. and Mrs. Peter K. Rusterholz

2008 United Hospital Donors

Mrs. Alan Rusterholz
Saint Paul Infectious Disease Associates
T. Jay Salmen
The James Scarpetta Family
Leonard D. Schloff, M.D.
Julianne Scott
Chris and Mike Seitz
Michael J. Seitz
Arthur Shuster
Siemens Building Technologies, Inc.
Freda Silver
Maurice & Mitzi Spiegel Fund
St. Paul Midway Lions Club Foundation, Inc.
St. Paul Police Foundation
Jim and Leslie Studenski
Tapemark Company, Inc.
Tenet Healthcare Foundation
George and Elise Tesar
Dr. and Mrs. P. Thienprasit
Barbara A. Thomas
Joan Thompson
Victoria Tigwell
Dr. Scott W. and Patricia S. Tongen
The Tozer Foundation
Treasure Island Resort and Casino
Mary Tyler
U.S. Bank - St. Paul
United Hospital Alumni Club
United Medical Specialties
United Neurosurgery Associates
United Properties
University of Minnesota
University of Minnesota - Department of Radiology
Upper Midwest Perinatal Assoc. Ltd.
Stuart B. Utgaard
Pierce J. Vatterott, M.D.
Paul and Carolyn Verret
Hadley Verwest, Jr.
The Victor Foundation
Thomas J. VonRueden, M.D.
Mr. and Mrs. David M. Wark
Dr. and Mrs. Frederick P. Washburn
Mrs. Diane Weinfurter
Dr. Russell C. Welch and Brenda Andrewson
Wells Fargo Foundation
Christopher J. Wendell, M.D.
Rosemary K. West

West Suburban Pathology Consultants, P.A.
Joseph J. Westwater, M.D. and Virginia A. Kraus
Mr. and Mrs. F. T. Weyerhaeuser
Thomas A. Wiberg, M.D.
Mr. Leonard H. Wilkening
Lloyd Willbrandt
Ned W. Windmiller
Norb and Karen Winter
Dr. and Mrs. Bernard J. Worth
Max E. Zarling, M.D.
Bronze - \$5,000 +
Academy Insulation, Inc.
David A. Adolfson
Tacoumba Aiken
AirTran Airways
Mr. and Mrs. Andrews Allen
Allina Medical Transportation Services
American Security Corporation
American State Bank
AMGEN
Dr. and Mrs. David C. Anderson
John and Beret Anderson
Dr. and Mrs. Ross E. Anderson
Arlene Applebaum
Applebaum Companies, Inc.
Mr. and Mrs. Stuart Applebaum
Associated Obstetricians & Gynecologists, P.A.
Augsburg College
Austad's The Golfers' Store
Axel Newman Family Foundation
Terrence L. and Jeanne M. Bailey
Dr. and Mrs. Walter L. Bailey
Alan J. Bank, M.D.
William Barrows, M.D.
Bassford Remele
J. Randolph Beahrs
Mr. and Mrs. Anthony Bechik
Hamon T. Becken
Maxine A. Becker
Anita M. Berg
Steven C. Bergeson
Andy F. Bessette
Blue Cross Blue Shield of Minnesota
Mr. and Mrs. Norlin G. Boyum
Lucy Brown
Jimmie L. Browning

Dr. and Mrs. Martin G. Bruhl
Building Bond Income-UHF
Mr. and Mrs. Ralph W. Burnet
Patrick Butler
Kenneth Caldwell, M.D.
Chapel Collection Fund
Dr. Elliot Chesler and Dr. Rosalind Chesler
Children's Hospitals & Clinics
Rita Clemens-Turner
Patricia A. and Jim Cooksey
Michael J. and Dalloul Coury
A.L. Crump Family Foundation
Currentech
Dain Rauscher Corporation
Dakota County Board of Commissioners
Dakota County Financial Services
Peter Daly, M.D.
David Hurd Painting
Mimi K Davidson
Mr. and Mrs. Robert J. Davidson
Bonnie Davis
Dayton Hudson Corporation
Angelica D. Della Grazia-Volpi
Dr. and Mrs. William Derechin
Dennis Desender
District Energy St. Paul, Inc.
Mr. and Mrs. Ralph D. Ebbott
Ecolab Foundation
Ecolab Inc.
Electric Resource Contractors
Larry Elliott, M.D.
Julia Endres-Spray
E. E. Engelbert, Jr.
EPIC Systems Corporation
Equity Services of St. Paul, Inc.
Lynn P. Ettestad
Leo F. Feeney
Sandy Feldblum
Dr. and Mrs. Davitt A. Felder
Mr. and Mrs. David R. Fesler
Mr. and Mrs. Litton E. S. Field, Sr.
Dorothy S. Fobes
Connie J. Foote
Richard T. Foreman
Roger Foussard
Evelyn Fredrickson
Fredrikson & Byron, P.A.
The Freeman Family
Milton Frogner

Mr. and Mrs. Robert W. Fulton
Harry and Jeanne Gallaher
Mr. and Mrs. Herbert R. Galloway
The B.C. Gamble & P.W. Skogmo Foundation
Paul G. Gannon
Michael D. Garr, M.D.
Mary Gavin
Dr. and Mrs. Robert W. Geist
General Mills Foundation
Anne German
Heidi S. Gilbert
Mr. and Mrs. Howard D. Gilbert
Mr. and Mrs. Frank N. Graham, Sr.
Lisa Gray
Greater Minnesota Cadillac Dealers
Warren and Sharon Green
Greenhaven Marketing Corporation
Richard S. Gregory, M.D.
Griggs-Cooper Co., Inc.
Guidant Foundation, Inc.
Mr. and Mrs. William M. Gydesen
Haag Family Foundation
Richard A. and Diane Haight
Doug and Marie Hanson
Valorie K. Harshe
Health Management Systems
Heart Leaflet Technologies, Inc.
Lisa Helland
Mary T. Hendrickson
Joan Herman
Jim Heuer
James Hilgert
Merle D. Hillman, M.D.
Homespections, Inc.
Raymond Houle
William Houlton, M.D.
Dr. Craig and Jean D. Humphries
Louis and Ida Lee Hurvitz
Hurwitz, Lerner, Butwinick, Wangsness & Nelson
Brec A. Huseby
Rose Hutterer
J.B. Hudson Jeweler
JBL Companies
Johnson & Johnson
Mr. D. Ward Johnson, Sr.
The H.S. Kaplan Family Fund of the Minneapolis Foundation
Everett H. Karon, M.D.
Pamela Ketcham

Miriam Y. Kim, M.D.
 Dr. and Mrs. David B. Kispert
 The Klas Family Foundation
 Robert C. Klas
 Robert C. Knutson
 James J. Kohler
 Dr. and Mrs. Brian M. Krasnow
 Paul Kraus
 Jacqueline M. Krech
 Brian LaCroix
 Laurie M. Lafontaine
 Elizabeth A. Lake and Phillip J. Trobaugh, Esq.
 Gerald L. L'Allier
 John Lambros, Jr.
 Langer Real Estate Services
 Daniel L. Larson
 Larson, Allen, Weishair and Co., LLP
 Carol A. Leffingwell
 Lindell Charitable Trust
 Allen Lorenz
 Susan L. Loushin
 Dr. and Mrs. Richard P. Lynch
 M.A. Mortenson Company
 Paulette Groshens
 The Malcolm M. Pearson Estate
 James Marino
 Susan J. Markham
 Marriott Corporation
 Marriott Corporation - HealthCare
 Adrian Marsden
 Jeanette Maruska
 Master Framers Incorporated
 Mr. and Mrs. Edward O. McBride
 McCarthy-Bjorklund Foundation
 Mr. and Mrs. Ron McCloud
 Arlie Alford McCoy
 Miriam K. McCreary, M.D.
 McKesson HBOC, Inc.
 Medtronic - Spinal and Biologics
 Pamela M. Melius
 Mellon Global Securities Services
 Michael Mercer, M.D.
 Christopher R. Merz
 Metropolitan OB-GYN, P.A.
 Mr. and Mrs. Joseph S. Micallef
 Millennium Neurosurgery, P.A.
 David Miller
 David R. Miller
 Patricia S. Miller

Minnesota Friends of the Orphans
 Minnesota Hockey Venture Group
 Minnesota Wild
 Moore Business Forms
 Gerald L. Moriarty
 Morrison Management Specialists
 William Morrissey
 Gerald and Carol Mulcahy
 Sally A. Mullen
 Mr. and Mrs. Joe Nasseff
 Lisa M. Nasseff
 Dr. and Mrs. Peter Nasseff, M.D.
 Steve Nasseff
 National Independent Brokers, Inc.
 Mr. and Mrs. Brock D. Nelson
 Dr. Scott and Jerilynn Nelson
 Neurological Associates of St. Paul, P.A.
 Patricia Newton
 Nimis-Newman
 Noel Foundation
 Northern X-Ray Company
 William F. Northrup, III, M.D.
 Anne and Kirby Ogden
 Susan Shuman Okie
 Susan H. Olson
 Mr. and Mrs. Stephen A. Osborn
 Palanisami & Associates, Inc.
 Lewis Paper
 Ellen M. Parks
 Mr. and Mrs. Kenneth H. Paulus
 Patricia E. Penovich, M.D.
 Drs. Kevin A. and Allison Peterson
 Pittway Corporation Charitable Foundation
 Pope Architects
 Dr. James M. and Mrs. Constance N. Pries
 Susan K. and Giuseppe Puppin
 PureChoice, Inc.
 R.W.M., Inc.
 William B. Randall
 Mr. and Mrs. Rodney P. Rangen
 James W. Reagan
 Rosemarie Reger-Rumsey
 Patricia Reiox
 Mr. and Mrs. Philip Thomas Resha
 Mr. and Mrs. Robert B. and Kathleen C. Ridder
 Karen A. Ringheim
 Riverview Hospital Auxiliary

Peter Robb
 Joseph L. Rose
 Thomas J. Rose, M.D.
 Robert Rubenstein
 Burton B. and Berneen R. Rudolph
 The Saint Paul Hotel
 Saint Paul Pioneer Press
 Anthony Sanneh
 Jerry Sansby
 Joseph J. Schaaf
 Mr. and Mrs. Paul K. Schilling
 Jerome J. Schorr
 Cheryl L. Schreiner
 Richard Schreiner
 Thomas S. Schroeder
 The Schubert Club, Inc.
 Bruce Scott
 Harry I. Shapiro
 Joan Shapiro
 Rosalind Shapiro
 Moe and Nazi Sharif
 J.L. Shiely Company
 Ronald A. and Norma Signorelli
 Marie Slawik
 Smiley, Glotter, Associates, Inc.
 Mrs. Elmer H. Smith
 Soderberg Inc.
 David and Judith Sonstegard
 Kimberli Sorbel
 Jac Sperling
 M. L. Spiegel
 Sportsman's Warehouse
 St. Paul Linoleum & Carpet Company
 The Standard Register Company
 Star Tribune
 Randolph C. Steer, M.D.
 Larry Stern, M.D.
 Debra Stevens
 Arthur and Margaret Stone
 Jennifer Strangis
 Stuart Companies
 Susan M. Tabor
 TAP Pharmaceutical Products
 Jean Teigland and Russ Felkey
 The Minneapolis Foundation
 Ruemah H. Thompson
 Charlene Tieso
 Robin Tieva, Jr.
 Ben Tilsner

William L. Tilton
 Timco Construction, Inc.
 Dr. and Mrs. Jack L. Titus
 Timothy R. Toonen
 Mr. and Mrs. Gary Tournier
 Dr. and Mrs. Steven Tredal
 Mr. and Mrs. James L. Trucker
 Kathleen Tuenge
 Cynthia S. Tunnichliff
 U.S. Bancorp Matching Gift Program
 Uptown Dermatology and SkinSpa
 Thomas W. Votel, M.D.
 W.L. Hall Co.
 Stephen R. Wagner, M.D. and Teri L. Wagner
 Janet A. and Donald C. Wegmiller
 Mimi Weinberger
 The Western Group
 Wildside Caterers
 James R. Wingate
 Wipfli, LLP
 Dr. and Mrs. W. Douglas Wong
 WorkflowOne
 Mr. and Mrs. Michael D. Wurm
 Xerox Corporation
 Dr. and Mrs. Paul T. Yellin, M.D.
 Barbara Youngblood

Summit Society - \$1,000 +

3M Company
 3M Foundation, Inc.
 Duke Adamski
 Advent Lutheran Church
 AGA Medical Corporation
 Aiden Robert Roth Memorial Trust
 AirTran Airways
 All Systems Installation
 Allina Health System
 Allina Medical Clinic - Administration
 Mr. and Mrs. Jack R. Ambler
 American Brain Tumor Association
 America's PPO/HealthEZ
 Mrs. Nancy J. Anderson
 Dr. and Mrs. Nathan P. Anderson
 Mr. Gerald L. Montie and Mrs. Mary E. Androff
 Mr. and Mrs. Anoush Ansari
 Apple Valley Medical Center
 Applebaum Companies, Inc.
 Mr. and Mrs. Sidney Applebaum

2008 United Hospital Donors

Associated Anesthesiologists, P.A.	Amie Hill	Greater Twin Cities United Way	Dr. Jerone and Penny Kennedy
Mr. and Mrs. Charles W. Avoles	City of Saint Paul	Greenhaven Printing	Dr. and Mrs. Douglas B. Ketcham
AWAD Eye Care, LLC	Claude M. Anderson Electric Co., Inc.	Grey Goose	Ms. Joan E. Kidd
Omar Awad, M.D.	Ms. Janet A. Coenen	Dr. Jeffrey Groshens and Mrs. Paulette Groshens	Mr. and Mrs. Tom Kigin
Mr. and Mrs. Terrence L. Bailey	Como Park Zoo	Guidant Foundation, Inc.	King Capital Corporation
Barbara and Dan Balik	Continental Diamond	Mrs. and Mr. Margo A. Halm	Mr. and Mrs. Russell S. King
Dr. and Mrs. Kenneth W. Baran	Stephanie Cook	Mr. Daryl K. Hanzal	Peter J. King
Mr. and Mrs. Robert L. Barrows	Mrs. Judith M. Coppersmith	Patricia and Al Hanzal	The Klas Family Foundation
William Barrows, M.D.	Dr. and Mrs. Victor A. Corbett	Hardenbergh Foundation	Mr. and Mrs. Robert C. Klas, Sr.
Bassford Remele	Bonnie Davis	Marshall and Elizabeth Hatfield	Cheryl M. Klenow, M.D.
Mr. Edward C. Bather	Davis Real Estate Services Group, LLC	HDR, Inc.	Knutson Construction Services
Drs. J. Randolph and Margaret M. Beahrs	Judge and Mrs. Michael T. DeCourcy	HealthEast Foundation	Mr. and Mrs. Robert J. Kosec
Mr. and Mrs. Hamon T. Becken	Mr. Dennis Desender	Mr. and Mrs. Richard E. Heichert	Mr. and Mrs. James S. Kowalski
Mrs. Harvey O. Beek	Mr. and Mrs. Vincent J. DiGiorno	Helen Sperry Lea Foundation	Kowalski's Woodbury Market, Inc.
Bennett's Chop and Rail House	District Energy St. Paul, Inc.	Ms. Lisa Helland	Mr. Paul Kraus
Larry and Barbara Bentson	Domain Property Management	Mr. Brandon Her	Mrs. Virginia A. Kraus
Ms. Anita M. Berg	Mr. and Mrs. J. Donald Donahue	HermanMiller for HealthCare	Mr. Michael V. Labolt
Ms. Pamela J. Berg	Downtowner Woodfire Grille	Mr. and Mrs. David F. Herr	Brian LaCroix
Mr. and Mrs. Steven C. Bergeson	Drs. Rene P. duCret and Susan J. Roe	Todd M. Hess, M.D.	Mr. and Mrs. Daniel M. Lafontaine
Berwald Roofing Company, Inc	Eagle Elevator Corporation	Mr. and Mrs. Jeff Hilger	John Lambros, Jr.
John and Andrea Bien	Ecolab Inc.	Ms. Amie Hill	Lancer Auto Care
Carol A. Bierbrauer	Dr. and Mrs. Jesse E. Edwards	Mr. and Mrs. Louis F. Hill	Langer Real Estate Services
Big Top Liquor Store	Edwards Memorial Trust	Dr. and Mrs. Merle D. Hillman	Elaine Larson
Mrs. Alexandra O. Bjorklund	Ms. Susan Engeleiten	Hobbit Travel	LarsonAllen, LLP
Mr. and Mrs. Garrett E. Black	Mr. and Mrs. Richard A. Engen	Mr. and Mrs. Jeffrey A. Hoelscher	Cecily Lawson
Mr. and Mrs. Rich Borncamp	Eric J. English, M.D.	Mr. and Mrs. John D. Hogle	Le Jeune Investment, Inc.
Boston Scientific Corporation	EPIC Systems Corporation	Homespections, Inc	Dr. and Mrs. Charles J. Lick
Briggs and Morgan	Ms. Lynn P. Ettestad	Roy Hope, M.D.	James G. Lindell
Dr. and Mrs. Michael H. Broderdorf	Falls & Nyhusmoen Construction, Inc.	Mr. Jonathon L. Nygren and Mrs. Anna Homing-Nygren	Linen Effects, Inc.
Lucy Brown	Mrs. Ann M. Fankhanel	Hospital Pathology Associates, PA	Bill and Sybil Lipschultz
Mr. Dan Bruggeman	Mr. and Mrs. Gerald J. Farlee, Jr.	Helene A. Houle	Mrs. Jean R. Ljungkull
Mr. and Mrs. Steve C. Bryant	Mrs. Renee Farlee	Ms. Linda Houle	Lockridge Grindal Nauen P.L.L.P.
Sandy Buckman, M.D.	Dr. Kathryn E. Farniok and Mr. Erik Englebreton	Mr. and Mrs. Richard Huberty	Mr. and Mrs. Patrick Lofton
Mr. Gregory P. Bulinski	David E. Feinberg	Mr. and Mrs. Robert E. Hunstad	Mr. Martin Lorenz-Meyer
Buon Giorno Italia	Felhaber, Larson, Fenlon & Vogt	Dr. and Mrs. Milton Hurwitz	Mr. and Mrs. Terrance Loushin
David W. Byrd	Fitness Together	Ruth and John Huss	Christy Mader
Mr. and Mrs. Calvin Calmenson	Dr. and Mrs. Patrick J. Flynn	Huss Foundation	Michael Madison, M.D.
Candyland, Inc.	Dr. Dan and Lyn Foley	Mr. Jeff S. Hyer	Mairs and Power, Inc.
Martin and Esther Capp Foundation	Mrs. Connie J. Foote	Dr. and Mrs. James T. Hynes	Mall of America
Mr. Paul D. Rehovsky and Ms. Ariel L. Carls	Fredrikson & Byron, P.A.	Ideacom Mid-America, Inc.	Mr. and Mrs. John C. Marboe
Dr. and Mrs. John B. Carter	Mr. and Mrs. Robert W. Fulton	Mr. William Imholte	Mr. Adrian D. Marsden and Mrs. Susan J. Markham
Central Parking System	Mr. and Mrs. Eric Funderburk	Imris Inc.	Marriott International
Robert Chandler, Jr.	Mr. and Mrs. Jacob Gannon	Austin Indritz, M.D.	Adrian Marsden
Dr. Diane M. Chappuis and Mr. Michael C. Chappuis	Bruce, Karen, and Charlie Gershman	Marc S. and Judy Isaacs	Jeanette Maruska
Chicago Marriott Downtown	Michael Goff	J.B. Hudson Jeweler	Maslon, Edelman, Borman & Brand
Children's Hospitals & Clinics	Goodin Company	Donald Johanns	Mr. and Mrs. Darin M. Mather
Mr. James W. Christiansen	Ms. Lisa Gray	Mr. Todd Johnson	McCarthy-Bjorklund Foundation
Mr. Darrin R. Ciaschini and Ms.		Dr. and Mrs. Kenneth L. Jue	Mr. Thomas P. McDonough
		Katherine B. Andersen Fund	McGough Construction Company, Inc.

McGough Foundation	Ouellette Foundation	Ms. Rhonda Schoeberl	Thomson Reuters	Wipfli, LLP
Ann M. McLaughlin	Our365 Share More	Mr. and Mrs. Jerome J. Schorr	Mr. William L. Tilton	Mr. and Mrs. Teddy Wong
McNeely Foundation	Palanisami & Associates, Inc.	Mrs. Cheryl L. Schreiner	Timco Construction, Inc.	WorkflowOne
Medica Foundation	Partners for Violence Prevention	Richard Schreiner	Dr. and Mrs. Jack L. Titus	Mr. and Mrs. Michael D. Wurm
Mr. and Mrs. John W. Medjanyk	Mr. and Mrs. Kenneth H. Paulus	Mr. and Mrs. John P. Schroepfer	Dr. and Mrs. Scott W. Tongen	Mr. and Mrs. David W. York
Medtronic - Spinal and Biologics	Mr. and Mrs. Anthony L. Penque	Schullers Tavern	Timothy R. Toonen, M.D.	Ms. Debra Young
The Medtronic Foundation	Peoples Electric Company	Julianne Scott	Travelers Foundation	Barbara Youngblood
Medtronic, Inc.	Peter J King Family Foundation	Sears Imported Autos Inc.	Treasure Island Resort and Casino	Dr. and Mrs. Wylie H. Zhu
Meghan Doll Photo	Pittsburgh Penguins	Mr. and Mrs. Michael J. Seitz	Dr. and Mrs. Steven M. Tredal	Ms. Kathleen M. Ziegler
Mr. Christopher R. Merz	Mr. and Mrs. Robert J. Plaszcz	Select Comfort	Kathleen Tuenge	John T Rodgers Society - \$500 +
Metropolitan Urologic Specialists, P.A.	Carl and Eloise Pohlada Family Foundation	Shamrock's Irish Nook	Mary Lynn Tyler	
Mr. and Mrs. Peter W. Michalowski	Pope Architects	Dr. Richard D. and Mrs. Barbara W. Shank	U.S. Bank - St. Paul	4Charity Foundation, Inc.
Michaud, Cooley, Erickson & Associates	Ms. Lori Porth	Mr. and Mrs. Moe Sharif	United Family Practice Health Center	Paul M. Abbott
Zondal & Esther Miller 1996 Charitable Remainder Unitrust	Prom Management Group, Inc.	The Shepard Family Foundation of the Saint Paul Foundation	United Hospital Administration	Ms. Elizabeth Adamski
Mr. David R. Miller	Mr. and Mrs. Giuseppe Puppini	Ann J. Fee Appert Shiely	United Hospital Behavioral Health Services	Ms. Julie Albinson
Mr. and Mrs. Michael Miller	Ramsey County Warrant	Siemens Building Technologies, Inc.	United Hospital Gift Shop	Mr. David A. Albright
Minnesota Gastroenterology, P.A.	RBC Wealth Management	Mr. and Mrs. Ronald A. Signorelli	United Hospital Medical Staff	Mr. and Mrs. Franklin W. Altomose, III
Minnesota Oncology Hematology, P.A.	Dr. and Mrs. Timothy J. Rumsey	Freda Silver	United Properties	American Center for Philanthropy
Minnesota Surgical Associates	Mr. and Mrs. John G. Reiling	Dr. and Mrs. Ranjit Singh	United Way	Mr. and Mrs. Donald R. Anderson
Minnesota Twins Baseball Club	Mr. and Mrs. Bill Reiling	Sodexo	Uptown Dermatology and SkinSpa	Ms. Georgiann Anderson
Minnesota Wire	Ms. Rozann M. Reyerson	Kimberli Sorbel	Mr. and Mrs. Stuart B. Utgaard	Judy Anderson
MN Coalition Against Sexual Assault	Dr. and Mrs. Martin E. Richards	Ms. Peggy Speaker	Mr. and Mrs. Paul A. Verret	Mr. and Mrs. Donald R. Anderson
Joseph Murray, Jr.	Ritt Family Foundation	Mr. Darren L. Spencer	Via	Mr. and Mrs. Gregory R. Anklam
John Nasseff	Mr. Jack A. and Mrs. Mary E. Ritt	Mr. and Mrs. Edson W. Spencer, Jr.	The Victor Foundation	Mr. Gordon J. Apple and Ms. Susan A. Thornton
Mickey Nasseff	Mr. and Mrs. James A. Ritz	Sportsman's Warehouse	Mr. and Mrs. Duane C. Vik	Mr. and Mrs. Daniel A. Arbach
Nasseff Mechanical Contractors, Inc.	Peter Robb	St. Paul Heart Clinic, P.A.	Dr. Thomas W. and Mrs. Audrey M. Votel	Mr. Mikehal J. Aschittino
Mr. and Mrs. Mark Nestegard	Robins, Kaplan, Miller & Ciresi, L.L.P.	St. Paul Radiology Foundation of the Saint Paul Foundation	Margaret A. Wallen-Friedman, M.D.	Ms. Laurie A. Backes
Neurological Associates of St. Paul, P.A.	The Rodman Foundation	Mr. and Mrs. Peter J. Stanton	Mr. and Mrs. Thomas J. Walrath	Mr. and Mrs. Walter L. Bailey
Ms. Patricia Newton	Mr. Craig M. Roen	State of Minnesota	Dr. and Mrs. Frederick P. Washburn	Mr. and Mrs. Martin Barrett
North Star Bank	Mr. and Mrs. James Roland	Dr. and Mrs. Phillip H. Stoltenberg	Mimi Weinberger	Mr. Scott Bennetts
Northwest Airlines Inc.	Patricia Rosbrow, Ph.D.	Ms. Jennifer Strangis	Wells Fargo Bank Minnesota, N.A.	Barbara Bentley
Mr. and Mrs. Daniel E. Nugent	Mr. and Mrs. Steven M. Rubin	Mr. and Mrs. James Studenski	Wendy & Steve Rubin Family Fund of the Saint Paul Foundation	The Bentson Foundation
The Oceanaire Seafood Room	Dr. Timothy J. Rumsey and Mrs. Rosemarie Reger-Rumsey	Summit Orthopedics, LTD.	Dr. and Mrs. Gilbert Wessel	Mr. and Mrs. Douglas J. Bisser
Mr. and Mrs. Jeffrey H. Olson	The Saint Paul Foundation	Sun Orchard	Dr. Joseph J. Westwater and Mrs. Virginia A. Kraus	Mr. Curtis Bois
Fane W. and Corie A. Opperman	Saint Paul Lung Clinic, P.A.	Phil Sutherland and Sandy McCaul	Dr. and Mrs. James J. Wiberg	Mr. and Mrs. David L. Boll
Opulent Vodka	Saint Paul Radiology, P.A.	Ms. Kristina J. Taylor	Dr. and Mrs. Cornelius W. Wiens	Sandra Braun
Otto Bremer Foundation	Mr. T. Jay Salmen	Charles Terzian, M.D.	Wildside Caterers	Kristoffer Breien, M.D.
	Mr. and Mrs. Joseph J. Schaaf, Jr.	The Elena Melius Foundation	Mr. Lloyd Willbrandt	Mr. Jack Brodt
		Barbara A. Thomas		Rick Brody and Margaret Flynn
				Mr. Robert E. Marshall and Ms. Lorelee J. Broer-Marshall
				Mr. Jimmie L. Browning

2008 United Hospital Donors

David K. Bucher, M.D.	Mr. David J. Glass	Mr. Todd Markuson	Process Displays	Mr. Duane H. Turner
Ms. Linda G. Burton	Paul Goering, M.D.	Marriott Harbor Beach	Ms. Janine M. Quitter	Mr. Tim Vesperman
Mr. and Mrs. Ben B. Calmenson	Golden Fig Fine Foods	Mr. Robert E. Marshall	Radiance Medspa	Viad Corp
Christine Carlin	Mr. and Mrs. Jeremy C. Grandstrand	Mr. Thomas M. Matenaer	Barbara Ramsdell	Betty Jane Walen
Mr. Matthew R. Carlson	Richard S. Gregory, M.D.	Mr. David E. Matteson	Mr. Gregory Rasmussen	Dr. David M. Wark and \
Ms. Sarah P. Carlson	Gretsch Incentives	Ms. Kathryn J. May	Ms. Evelyn L. Reisner	Mrs. Mary Ann Barrows Wark
Ms. Juleen M. Carroll	Karen Gustafson	Mr. and Mrs. Patrick A. Mazorol	Mr. and Mrs. John J. Ressler	Lisa Waytulonis
Challenger Corporation	Michele Hansen	Mr. Michael McAnder	Mr. Daniel J. Richardson	Mr. and Mrs. John P. Weiland
Chicago Marriott Suites O'Hare	Ms. Rebecca Hansen	James McGlade	Ron Burg Fine Portraits	Mr. Robert C. Welle
Mr. and Mrs. Scott Conway	Donald Harper	Ms. Sara G. McGrane	Dr. and Mrs. John F. Rotilie	Mr. and Mrs. Louis C. Wendling
Mr. and Mrs. Jay Cowles	Shelly Harvey	Mrs. Audrey C. Mears	Mr. and Mrs. Michael J. Russo	Mr. Michael T. West and Dr. Kathleen M. West
Mr. and Mrs. Albert E. Dabruzzi	Mr. Henry R. Heitman	Susan Meents	The Saint Paul Hotel	Ms. Janet M. Whittingham
Lisa Damon	Bradley A. Helms, M.D.	Mercedes Benz Club of America - Twin Cities	Saint Paul Infectious Disease Associates	Mr. Gregory L. Wilmes and Mrs. Magdalena J. O'Reilly
Dr. and Mrs. Mark T. Destache	Mr. and Mrs. David F. Herr	Mr. Jerry Metzger	Mr. and Mrs. Ronald S. Sapieszko	Wanda Wilson
Mr. William F. Diers	Robert Hewitt	Mr. Jerry W. Metzger	Deb Sapp	Gary E. Wood
Mr. and Mrs. William R. Dircks	Hilton Minneapolis	Mr. Joseph Michaels	Ms. Cheryl L. Saxby	
Disney Worldwide Services, Inc.	Mr. and Mrs. Dennis A. Homel	Mr. Eldon C. Miller	Sonia Schaeffer	
Mr. and Mrs. Lyle C. Doerr	Mr. and Mrs. Ron Inman	Minnesota Public Radio	Ms. Kristina Scheid	Charles T. Miller Society - \$250 +
Dr. and Mrs. Thomas M. Dresen	Mr. Michael K. Johnson	Minnesota Sports and Entertainment	Mr. James J. Schiltgen	A.J. Forliti Photography
Drugwise Drug Testing Service	Mr. Gregory A. Kvam and Mrs. Patricia R. Johnson	Minnesota Valley Country Club	Mary Schiltgen	Mr. and Mrs. Yousef Abumayaleh
Ms. Rebecca Edberg	Jon Oulman Gallery and Salon	Mark Mishek	Mr. and Mrs. Daniel G. Schmidtke	Admiral D's
Eden Roc Renaissance	Barbara Jones	Mr. Ragnvald Mjanger	Mr. and Mrs. Thomas S. Schroeder	Adolfson & Peterson Construction
Mr. and Mrs. Patrick Emerson	Mrs. Joan M. Jungkunz	Mohawk Moving & Storage Co.	Mr. Paul B. Schultz	Mr. and Mrs. David A. Adolfson
Curtis E. and Debra D. Enestvedt	Ms. Sonia Kashuk	Drs. Gerald L. Moriarty and Patricia E. Penovich	Mrs. Linda R. Sershon	Advanced Skin Care
Mr. and Mrs. Barry J. Engeldorf	Mr. and Mrs. Roger D. Keapproth	Mr. and Mrs. William Morrissey	Slumberland Furniture	Mr. and Mrs. Richard J. Anderson
ExerCare Fitness Center	Pamela Ketcham	Dan and Tammy Mott	Solo Vino	Mr. and Mrs. Dale K. Anderson
Joseph Fassler	Mr. and Mrs. Paul J. Klein	Mr. and Mrs. Gerald R. Mulcahy	Mr. and Mrs. Paul M. Spilseth	Mr. and Mrs. Donald W. Anderson
Ms. Kimberly K. Faust	Mr. and Mrs. Charles D. Knudtson	Mr. and Mrs. David L. Nelson	St. Paul Linoleum & Carpet Company	Mr. and Mrs. Dwight M. Anderson
Mr. and Mrs. Mark Fawcett	Dr. and Mrs. Stephen J. Kolar	Mary Ann and Ed Newman	Mr. and Mrs. Kenneth R. Stangenes	Mr. and Mrs. Edward C. Anderson
Mr. and Mrs. Steven R. Ficks	Mr. Roger D. Keapproth and Mrs. Barbara L. Korsell	Mr. and Mrs. Gregory J. Noon	Starkey Hearing Foundation	Mr. Marvin R. Anderson
Mr. and Mrs. Raymond M. Finlayson	Mr. Thomas Lais	Ms. Joette Nuyen	Dr. and Mrs. James E. Stevenson	Mary Anne Anderson
Ms. Amy Fischer	Patricia Lalley	Dale Olson, D.D.S.	Mary Stieger	Ms. Patricia A. Anderson
Mr. and Mrs. Darren T. Forbes	Mr. and Mrs. David P. Langer	Mr. and Mrs. Gregory J. Olson	Ms. Linda Stowman	Mr. Edward C. Anderson
Ms. Stephanie R. Forbes	Mr. Gregg E. Lauderdale and Mrs. Lisa M. Damon	Ms. Diane O'Neill	Kristi Sullivan	Dean Arneson
Carol Jo Forneris	Ms. Bernice Law	Mr. and Mrs. Ronald E. Palmen	Mr. and Mrs. William A. Sullivan, III	Mr. and Mrs. Vincent M. Arrigoni
Ms. Cindi Foster	Lexus of Maplewood	Mr. and Mrs. Philip J. Paquette	Ms. Nina Thai	Mr. and Mrs. Drew D. Baldrige
Harold Fotsch	Raymond Lorenz	Mr. and Mrs. Marc Paradise	The Westin Edina Galleria Hotel	Ms. Cheryl Bangasser
Mr. and Mrs. Garrett Ganske	Sharon Lorenz	Ms. Patricia R. Passon	Mr. Curt N. Theriault	Alan J. Bank, M.D.
Dr. N. L. Gault	Lubdubb Uniforms	Dr. Gerald F. Peterson and Mrs. Sara J. Olson	Ms. Melba A. Thompson	Mr. and Mrs. Bryan L. Barnhart
Mr. Philip M. Gelatt	Ms. Elizabeth A. Lutton	Julianne Peterson	Robin Tieva, Jr.	
Dr. and Mrs. John W. Gfrerer	Mr. and Mrs. Thomas C. Lyman	Mr. Benjamin R. Pries	Mr. and Mrs. Jim Trucker	
	Mr. and Mrs. Joseph C. Madigan		Dr. and Mrs. Michael J. Trump	
	James Marino			

Mr. and Mrs. Gary C. Beckwith, Jr.	Ms. Vicki J. Call	Mr. and Mrs. Patrick J. Donovan	Dr. and Mrs. James W. Haight	Mr. and Mrs. George S. Jezierski
Mr. and Mrs. Ronald R. Belschner	Capitol Dental Center P.L.C.	Mr. and Mrs. Michael Downes	Ms. Mary E. Halvorson	Mr. Edward P. Jirak
Kristen Bentley	Capitol Embroidery Group, Inc.	Mr. and Mrs. David E. Drake	Dr. and Mrs. David D. Hamlar	Mr. David W. Johnson
Ms. Mary L. Berg	Capitol Neurology, P.A.	DS & B, LTD	Mr. and Mrs. Thomas W. Hannasch	Mr. and Mrs. Dennis B. Johnson
Christopher Bernish	Ms. Jane C. Carlson	Mr. William Dukek	Ms. Donna Hanson	Mr. and Mrs. James O. Johnson
Mr. and Mrs. Alton T. Berskow	Mr. and Mrs. Jeffrey L. Carlson	Mr. and Mrs. John Dunlop	Mr. and Mrs. Perry R. Hanson	Mr. and Mrs. Todd Johnson
Mr. and Mrs. William E. Berwald	Mrs. Pauline M. Carlson	Mr. and Mrs. Thomas W. Dziak	Mr. Peter A. Pahapill and Mrs. Rita Harmandayan	Mrs. Linda A. Johnson
Mr. and Mrs. Eugene R. Berwald	Mrs. Renate K. Carlson	Dr. and Mrs. Paul A. Ekberg	Mr. and Mrs. James A. Hasling	Margaret Johnson
Mr. Andy F. Bessette and Mrs. Cheryl Noel-Bessette	Glenda Cartney	Betty English	Mr. and Mrs. James A. Hasling	Mr. and Mrs. Kristopher Johnson
Best Western Kelly Inn - Plymouth	Mr. and Mrs. Brian G. Carufel	Ms. Naomi N. English	Ms. Heather L. Haubenschild	Ms. Vickie M. Johnson
Best Western Kelly Inn - Saint Paul	Gloria Chadima	Mr. Jeffrey A. Schackor and Ms. Mary A. Eret	Ms. Susan L. Haugen	Ms. Jean C. Jovan
Bio Cleaning Specialists/ Assured Decontamination Services	Mr. and Mrs. Jay P. Chadima	Lawrence Erickson, M.D.	Mr. and Mrs. William D. Headrick	Mr. Romulo V. Kabatay
Mr. and Mrs. Ronald R. Blake	Chambers Hotel - Minneapolis	Mr. and Mrs. Jason A. Evers	Dr. and Mrs. Charles W. Hedenstrom	Mr. Naseem N. Kahlil
Mr. Bradley Blanchard	Chandler and Brown, LTD	Mr. John C. Fair	Mrs. Katherine L. Heller-Ostroot	Gary Kaminsky
Mr. and Mrs. Don J. Blatz	Mr. Michael C. and Dr. Diane M. Chappuis	Mr. Donald W. Fairbanks	Mrs. Mary T. Hendrickson	Mr. and Mrs. William L. Kaphing, Jr.
Mrs. Shari S. Blindt	Mr. and Mrs. Mark Chlebeck	Ms. Barbara J. Farley	Mr. and Mrs. Mark Hennen	Mr. and Mrs. Bill Kaphing
Mr. and Mrs. Thomas Blindt	Choo Choo Bob's Train Store	Ms. Mary E. Feist	Mr. Drew M. Hensel	Mr. and Mrs. Andrew Kasid
Mr. Thomas A. Boche	Ms. Margaret H. Chutich	Ms. Jennifer L. Fenton	Mr. and Mrs. Rodney M. Heuer	Mrs. Andrea J. Kaufman
Mr. Edwin Bogonko	Mr. and Mrs. Butch Cireasi	Ms. Maria T. Ficks	HGA Architects & Engineers	Mr. Daniel J. Kedrowski and Mrs. Georgia J. Debels-Kedrowski
Mr. and Mrs. Timothy K. Bollig	Clam Corp	Fidelity Charitable Gift Fund	Merle Hilliard, M.D.	Mr. and Mrs. Robert W. Keis
Mr. and Mrs. George H. Boomer	Cleveland Airport Marriott	Mr. and Mrs. Peter J. Fiore	Mr. Lawrence Himebaugh	Mr. Patrick Keogan
Michael Borkan	Cheryl Cloutier	Mrs. Judith M. Fitterer	Mr. and Mrs. Dennis Hjort	Ms. Jennifer L. King
Carolyn Borow Moore	CMD & Associates Executive Search	Flaherty's Arden Bowl, Inc.	Mr. Ronald E. Hodges	Mr. and Mrs. Peter E. Kirchert
Mr. John J. Boulger	Mr. and Mrs. Timothy Cokeley	James Flink, M.D. and Diane Uecker-Flink, R.N.	Mr. and Mrs. Thomas D. Holets	Annette Klein
Mr. and Mrs. John E. Brandt	Cookie Lee Jewelry	Margaret Flynn	Jodi Hoof	Mr. and Mrs. Daniel S. Knudsen
Mr. Timothy J. Braun	Gary Copland, M.D.	James Foley, M.D.	Mr. and Mrs. Raymond Houle	Mrs. and Mr. Mary Knudsen
Mr. and Mrs. Brian Brekke	Mr. and Mrs. Lawrence Coss	Mr. Aaron Forbort	Mr. and Mrs. Christopher P. Hughes	Mr. Dennis M. Kolasa
Mr. Larry A. Brey	Ms. Connie J. Courtade	Kathryn Forcier	Mr. Robert L. Hurley	Mr. and Mrs. Robert M. Krasne
Ms. Heather Britt	Kenneth Cross, M.D.	Mr. Christopher G. Foss	Mr. David Husom and Mrs. Ann Marie Rose	Sandra Krogstad
Mr. and Mrs. Michael D. Brocker	Mr. Raymond P. Dalpiaz	Ms. Mary Fouche-Dill	Intereum	Charlotte Labathe
Mr. and Mrs. John V. Brodt	Mr. Douglas A. Danner	Mrs. Lisa M. Frantz	In-Vision Grand Ave	Lakeshore Players Theatre
Mr. Brian Brothers	Mr. Karl Dedenbach and Dr. Marie C. Leisz	Mr. Stephen Froelich	Irie Delights Personal Chef Service	Mr. and Mrs. Gerald L. L'Allier
Mr. and Mrs. David Brown	Mr. and Mrs. Mark T. Demma	Ms. Minda M. Garcia	Mr. James Jacobson and Mrs. Andrea J. Kaufman	Mr. and Mrs. Frank J. Lang
Mr. and Mrs. Jeff Buelt	Mrs. Sheryl A. Dentinger	Ms. Celeste Gatz	Michele Jacques	Jill Lang
Mr. Ron Burg	Ms. Jody Determan	Mrs. Martha R. Gaydos	Jill Janvrin	Mrs. Mary J. Langer
Mr. Fritz L. Burgess	Mr. and Mrs. Kevin W. DeVore	Mrs. Nancy R. Godfrey	Jellycat, Inc.	Norma L. Larson
Burke & Thomas, PLLP	Mr. Richard K. Diedrich	Mr. Britton A. Goetze, Jr.		Dr. and Mrs. Jeffrey P. Lassig
Mr. and Mrs. Paul G. Busch	Mr. and Mrs. Thomas R. Diffley	Mr. and Mrs. Bill Goodell		Laurel Lee Jewelry, Inc.
Mr. and Mrs. Ronald Butchko	Mr. Josh Dirlam	Ms. Karen J. Gorz		Mr. and Mrs. Howard G. Lee
Samara Calderon	Mr. and Mrs. John D. DiSanto	Mr. and Mrs. Harold J. Granger		David and Lenore Lemke
	Anne Dombrock	Mr. and Mrs. Bill Grant		Leo A. Daly
		Mrs. Jacqueline D. Grove		Mrs. Kathryn Leveroos
		Ms. Sarah J. Gustafson		Mr. and Mrs. James W. Lewis
		Ms. Ruth H. Haag		
		HAF Architects		

2008 United Hospital Donors

Lincolnshire Resort Marriott	Southwest	Ms. Melissa J. Parker	Patricia A. and John B. Ryan	Mr. Daniel R. Anderson and Ms. Lori Jean Swanson
Mr. and Mrs. Mark Lindblad	Minnesota Life Insurance Company	Pazzaluna	Mr. and Mrs. J. Anders Rydaker	Ms. Patricia M. Sweeney
Ms. Carolyn Lingenfelter	Mr. Tom Moehn	Alison Peterson, M.D.	Mr. and Mrs. Michael J. Salmen	Edward Szachowicz, M.D.
Mr. Paul J. Linstroth	Theresa Moen	Kathleen M. Peterson	Mr. Jerry A. Samargia	Ms. Susan M. Tabor
Mr. David H. Liss	Mr. and Mrs. Frank Moga	Drs. Kevin A. and Alison M. Peterson	Mr. and Mrs. Robert C. Samec	Ms. Molly R. Taylor
Mr. Tony J. Lopesio	Mr. and Mrs. Carl A. Mohn	Ms. Kirsten L. Peterson	Drs. Karl J. Sandin and Laura Montgomery	Ten Thousand Villages
Ms. Elizabeth Lorenz-Meyer	Mr. Bradley C. Moore and Mrs. Carolyn J. Borow Moore	Mr. and Mrs. Lane Peterson	Mrs. Kay Sargent	Mr. and Mrs. David Thao
Mr. and Mrs. Richard T. Loscheider	Mr. and Mrs. Lonny A. Moore	Robert Peterson	Mr. Jeffrey A. Schackor and Ms. Mary A. Eret	The Bank of New York Mellon
Vicki Lunz	James Moore	Mrs. Cynthia K. Petty	Debra Scherer	Mr. and Mrs. James A. Thole
David Lynch-Salamon, M.D.	Mr. and Mrs. Larry M. Morgan	Mr. David Pfuhl	Mr. Jeffrey J. Scherer	Mr. and Mrs. James J. Thomas
Mrs. Sheila A. Lynchsalamon	Mr. Atom S. Mortice	Mrs. Jamie L. Pfuhl	Mr. Stanley W. Schimke	Thomas Liquors and Fine Wines
M & M Financial Company	Mr. Darren Moseley	Mr. and Mrs. John L. Phillippi	Mr. and Mrs. Paul P. Schnell	Mr. and Mrs. William B. Thompson
Mr. and Mrs. Dennis J. Maas	Dr. and Mrs. Paul F. Mulcahy	Mr. and Mrs. Steven M. Phillips	Mrs. Suzanne S. Schradle	Mr. David C. Tjosvold
Ms. Julie Madison	Dina Huddleston Muller	Mr. Charles A. Greenberg and Mrs. Lauri A. Pierce-Greenberg	Mr. and Mrs. Thomas S. Schroeder	Stephen Tkachuck
Mr. Shane Madsen	James A. Mullin	Drs. Gordon and Mary Ella Pierpont	The Schubert Club, Inc.	Mr. James P. Tomczak
Mr. and Mrs. Daniel J. Malecha	Mrs. Kristin Mullin	Mr. Brian J. Pietsch	Securian Foundation	Toronto Marriott
Mr. Gregory D. Malik	Mr. Michael A. Murphy	Mr. and Mrs. James C. Platten, Jr.	Mr. and Mrs. George Serey	Mr. and Mrs. Eric C. Tostrud
Marathon Petroleum Company, LLC	Tawnee Nasseff	Mr. and Mrs. Charles N. Nauen	Ms. Renate M. Sharp	Mr. Richard C. Townsend
Marina del Rey Marriott	Mr. and Mrs. Charles N. Nauen	Mr. and Mrs. Brian Brekke	Mr. and Mrs. Ross G. Sheire	Trophy Encounters
Marriott West, Minneapolis	Dr. and Mrs. Duane F. Nelson	Mr. Thomas Powers	Mrs. Trudy J. Sheire	Dr. and Mrs. Victor H. Tschida
Marriott's Mountain Shadows Resort	Mr. Jim Nichols	Mr. and Mrs. Terry Pratt	Chris Shinkle	Ms. Rodden H. Turner
Ms. Mary C. Marsden	Nicholson Family Foundation	Prime General Contractors, LLC	Dr. and Mrs. Rocklin A. Shir	Ms. Diane M. Tyler
Mr. and Mrs. Robert J. Martineau	Mr. and Mrs. Charles H. Nielsen	Mr. Andrew Pugh	Ms. Nicole Sickmann	Vancouver Marriott Pinnacle
Mr. Richard A. Matthews	Mr. Roger H. Nielsen	Pure Fishing	Danielle Sicora	Mr. Lam Q. Duong and Mrs. Quyen Vo
Robert Mattlin, Jr.	Jeanne Nierowicz	Mrs. and Mr. Cindy A. Quehl	Ms. Constance Y. Skillingstad	Bobbi Vogt
Mau's Corner, Inc.	Ms. Amy J. Niess	Mr. Ben Rachel	Mr. and Mrs. Jeffrey A. Slagerman	Mr. and Mrs. Richard A. Vohs
Mr. and Mrs. Donald P. Mayer	North Oaks Golf Club	Mr. and Mrs. Paul A. Radosevich	Mr. Jeffrey Smith	Mr. Bryant F. Vujongyia
Mrs. Christine M. Mazanec	Ms. Lisa M. Norton	Mr. Tim L. Ramsey	Maureen Smith	W Minneapolis Foshay
Ms. Mary Mc Lean	Mr. and Mrs. David J. Notch	Rabbi Bernard and Laeh Raskas	Mr. Steven L. Smith	James Wagner
Ms. Kathi S. McGaffigan	Mr. Don Notvik	Roger Rasmussen	Ms. Irene A. Smuda	Mr. Timothy J. Walker
Mr. and Mrs. Thomas J. McGough, Jr.	Ann O'Boyle	Ms. Mary K. Ratzlaff	Coralee Solin	Constance Walsh
Mrs. Mary M. Mclean	Mr. Harlan M. Cavert and Mrs. Linda C. Odegard	Mr. John K. Reding	Mr. Paul F. Spencer	Mr. Joe Webster
Mrs. Rachel L. McNamara	Odwalla	Mrs. Beverly J. Reiman	Mr. Brian E. and Dr. Kristine K. Spiewak	Mr. Scott Weicht
Mr. Gary Melius	Mr. and Mrs. J. Kirby Ogden	Renaissance Chicago Hotel	Spitzley Enterprises, Inc.	The Weidt Group
Laura Messenger	Oh Those Guys, LLC	Rickie Ressler	Ms. Lara L. Sprinkle	Ms. Jodi Welch
Mr. and Mrs. Terrence Mestnik	Mr. Derek J. Olson	Mr. Steven J. Ritt	St. Bernards School	Mr. Stephen G. Wenzel
Metro Dance Center, LLC	Mr. and Mrs. Glen O. Olson	Frank Ritter, M.D.	Mr. and Mrs. Andrew J. Staebell	Ms. Suzanne Werner
Mr. and Mrs. Sean S. Meyer	Ms. Dolly L. Opel	Ms. Julie A. Roberts	Ms. Sara E. Sternberger	Mr. Brady P. West
Mr. John A. Mickelson	Mr. and Mrs. Dale Oskey	Mr. and Mrs. Mark Robertson	Mr. and Mrs. Brian J. Strand	Dr. Penny A. Wheeler and Ms. Margaret H. Chutich
Beverly Miller	Mr. Jay S. Overbaugh	Mr. Greg Robinson	Jamie Strand	Mrs. Faith Whitcraft
Mr. Clement H. Miller	Overland Park Marriott	Mr. and Mrs. Mike Ryan	Mr. David M. Sullivan	Mr. Leonard H. Wilkening
Mr. Gregory S. Miller	Mr. David Palmer		Mr. and Mrs. Michael D. Sullivan, Jr.	Mr. and Mrs. James J. Wilking
Lynne Mills	Mr. John F. Palmer			Mr. Matthew T. Willette
Minneapolis Marriott				

Wine Styles
 Peter B. Wold, M.D.
 Dr. and Mrs. Peter B. Wold
 Jennifer Wolf
 Mr. and Mrs. Stephen G. Wolters
 Mr. Jerry E. Womack
 Mr. and Mrs. Bradley S. Wood
 Mr. Larry L. Woodbury
 Mr. and Mrs. Doug Woog
 Mr. and Mrs. Doug Woog
 World Cycling Productions
 Kathleen Wuorinen
 Jerry and Marcia Yanz
 Joann Yohn
 Mr. Stephen L. Yohn
 Mr. John Zellmer
 Mr. and Mrs. Paul E. Zenner
 Mr. and Mrs. Bart L. Zibrowski
 Gerald Zierdt, Jr.
 Mr. and Mrs. Edward H. Zieroth

1855 Club - \$100 +

Ms. Marie K. Aarthun
 Mr. and Mrs. Peter J. Abell
 Ms. Barbara M. Abrass
 Mr. and Mrs. Peter J. Abts
 Mrs. Mary G. Adams
 Mary Adkins
 Mr. and Mrs. Roger S. Adkins
 Mr. John W. Adler
 Mr. and Mrs. Alfred Aeppli
 Mr. and Mrs. David W. Akey
 Drs. Thomas L. and Irene H. Alberg
 Mr. Timothy J. Grady and Mrs. Catherine M. Allan
 Audrey Allen
 Mr. and Mrs. Russell L. Allen
 Allstar Plumbing
 Mr. and Mrs. Gene F. Almquist
 Barry Alverman
 Ms. Caroline A. Amplatz
 Roger Amundson
 Mr. Leon W. Anders
 Mrs. Angela Anderson
 Mrs. Barbara W. Anderson

Mrs. Cheryl J. Anderson
 Mr. and Mrs. Christopher M. Anderson
 Mr. and Mrs. Gerald L. Anderson
 Mr. and Mrs. John W. Anderson
 Mr. and Mrs. Christopher M. Anderson
 Mr. Kent A. Anderson
 Ms. Kristin B. Anderson
 Mr. Laurence A. Anderson
 Mr. Larry E. Anderson
 Mr. and Mrs. George G. Anderson
 Ms. and Mr. Michele A. Anderson
 Ruben Anderson
 Mr. and Mrs. John W. Anderson
 Mr. and Mrs. Sterling J. Anderson
 Ms. Tina M. Anderson
 Sharon Andert
 Mr. and Mrs. Raymond W. Angerman
 Mr. Mark S. Anthonson
 Beverly Aplikowski
 Applied Images
 Mr. William M. and Dr. Karin I. Armstrong
 Mark Arnesen, M.D.
 Mr. Ennis Arntson
 Dr. and Mrs. Frederick D. Army
 The Arthur and Constance Goodman Family Foundation
 Mr. David M. Ascher
 Ms. Deebra D. Aslyn
 Ms. Lori R. Athias
 Attorneys' Liability Assurance Society, Inc.
 Ms. Linda Auchter
 Dr. and Mrs. Lynn L. Ault
 AVA
 Mr. and Mrs. Jeffrey C. Ayers
 Mrs. Marjorie J. Baab
 Mr. and Mrs. David F. Babcock
 Mr. and Mrs. Andrew M. Baese
 Audrey Baird
 Bartlett Baker, Jr.
 Mr. and Mrs. William D. Baker

Mrs. and Mr. Lee P. Baker
 Mr. Yazdan Bakhsh and Mrs. Bassem Alsabbagh
 Mr. Martin O. Bakko
 Jerry Baldwin, M.D.
 Mrs. Catherine S. Ballman
 Mr. and Mrs. Dale R. Ballman
 Bar Napoletano
 Mr. and Mrs. Theodore S. Baran
 Mr. and Mrs. David G. Baratti
 Mr. Robert A. Barbosa
 Mrs. Margo Barnes
 Mr. and Mrs. Michael G. Barthel
 Joseph Barthel
 Mrs. Nancy L. Bartkiewicz
 Mr. Alan R. Luthi and Mrs. Constance K. Bartl-Luthi
 Mr. and Mrs. Gary A. Bataglia
 Mr. John M. Bates
 Mr. and Mrs. Howard C. Bates
 Dr. and Mrs. Kenneth P. Batts
 Mr. and Mrs. Marvin E. Bauer
 Mary Baumbach
 Drs. Margaret M. and J. Randolph Beahrs
 Bearpath Golf & Country Club
 Mr. and Mrs. Bruce Beaubien
 Mrs. LaVonne Beck
 Mr. and Mrs. Daniel Beeson
 Mr. James H. Beistle
 Mr. and Mrs. John Belian
 Mr. and Mrs. Richard E. Belin
 Mr. and Mrs. Brian G. Belisle
 Ms. Marcia L. Bell
 Belle Amie Spa
 Mr. and Mrs. James S. Beloff
 Mr. and Mrs. James S. Beloff
 Mr. and Mrs. Robert M. Benjamin
 Ernest Bennett, Jr.
 Mr. and Mrs. Mark A. Benton
 Mr. and Mrs. Stephen R. Bergerson

Mr. and Mrs. Bradley L. Bergie
 Mr. and Mrs. Arthur R. Berry
 Best Western - White Bear
 Mr. James E. Bettendorf
 Mrs. Debra A. Bettes
 Ms. Cynthia T. Betz
 Mrs. Eileen B. Biernat
 Mr. and Mrs. Lawrence W. Bjorgan
 Mr. and Mrs. Thomas R. Bleakly
 Lynne Blomquist
 Bloomingdales - MOA
 Mr. and Mrs. Graydon R. Boeck
 Mr. and Mrs. Daniel K. Bohn
 Mr. and Mrs. Duane C. Bojack
 Mr. and Mrs. Michael J. Boland
 Mr. and Mrs. Timothy K. Bollig
 Bonfe's Auto Service & Body Repair
 David Bonham, M.D.
 Books Are Fun, LTD
 Mr. and Mrs. Dana Boomgarden
 Ms. Pamela J. Borich
 Mr. and Mrs. Todd S. Borndale
 Mr. and Mrs. David Borrett
 Mr. Jake E. Bowar
 Mr. and Mrs. Timothy A. Bradbury
 Mrs. Rebecca L. Braden
 Mr. Thomas A. Bramwell and Mrs. Karen L. Bramwell Volkman
 Mr. and Mrs. Don E. Branch
 Ms. Stacey C. Braschler
 Shelley Braton
 Mr. and Mrs. James G. Bravatto
 Mr. and Mrs. Gerald Breidel
 Mr. and Mrs. Timothy J. Brengman
 Mr. Dean R. Brenner and Mrs. Robin L. Shaffert
 Mr. and Mrs. George D. Brier
 Mrs. Gloria Brodie
 Mr. and Mrs. James D. Broome

Mrs. Betty N. Brost
 Mr. Bradley Brown
 Mr. and Mrs. Gerald R. Brown
 Mr. and Mrs. Scott Brown
 Mr. Murray R. Brown and Mrs. Mary J. Funn
 Susan Brown
 Ms. Bonnie L. Brubakken
 Mr. and Mrs. W. Joseph Bruckner
 Mr. and Mrs. Lawrence J. Bryk
 Mr. Ellen B. Buchanan
 Mr. and Mrs. Roy L. Buchholz
 Mrs. Elizabeth E. Buchholz
 Mr. and Mrs. Myron C. Bull
 Ms. Becky J. Burdick
 Dr. and Mrs. Lawrence J. Burgart
 Ann Burgeson
 Mr. Timothy S. Burke
 Mr. and Mrs. Gregory A. Bury
 Mrs. Susan M. Cadwell
 Ms. Theresa M. Cain
 Jane Campbell
 Mr. and Mrs. Joseph F. Campion
 Mrs. Ruth A. Campion
 Mr. and Mrs. Joseph G. Capecci
 Dr. and Mrs. Terrance D. Capistrant
 Ms. Celine Carlson
 Carlson Chiropractic Clinic
 Major and Mrs. Dayton C. Carlson
 Ms. Hatti Marie Carlson
 Mrs. Nancy A. Carlson
 Mr. and Mrs. Robert H. Carlson
 Mr. and Mrs. Wayne W. Carlson
 Mr. Daniel L. Carnicom
 Mr. and Mrs. Joseph P. Carroll
 Mr. and Mrs. Tom Carroll
 Mr. and Mrs. Russell B. Carter
 Mr. and Mrs. Timothy O. Carvelli
 Mr. and Mrs. Daniel J. Casey
 Mrs. Sandra Cashman-Palmer

2008 United Hospital Donors

Mr. and Mrs. Robert A. Casper, Jr.	Mr. and Mrs. Bradley C. Conner	Mr. and Mrs. Bob Devere	Mrs. Kathryn V. Ekness	Mr. and Mrs. Henry K. Flathmann
Daniel Cassellius	Mr. Jay F. Cook	Dr. and Mrs. Leslie K. Diaz	Mr. and Mrs. Robert L. Ekstrand	Mrs. Lori A. Fleischhacker
Mr. and Mrs. Jeffrey K. Caswell	Robyn Cook	Ms. Deborah J. Dickman	Mr. and Mrs. Alexander W. Elder	Flint Hills Resources
Mr. and Mrs. Christopher Causey	Cookies by Design	Mr. and Mrs. Timothy M. Dietz	Mr. Richard F. Elliott	Dr. and Mrs. Thomas P. Flynn
Mr. and Mrs. Robert N. Chaffin	Ms. Olga L. Cooper	Mr. Michael R. Dietzman	Mr. and Mrs. Robert J. Ellis	Ms. Mary P. Foarde and Mr. Frederick Fink
Mr. and Mrs. Robert N. Chaffin	Mrs. Judith M. Coppersmith	Mrs. Patricia M. Dillinger	Mr. and Mrs. Herbert A. Elmstrom	Mr. and Mrs. Charles Fodor
Ms. Katie E. Chalmstrom	Mr. and Mrs. Peter J. Cordon	Harrison P. Dilworth, IV, M.D.	Ms. Linda Engberg	Mr. and Mrs. Charles E. Foley
Ms. Mary Kaye H. Champ	Mr. and Mrs. Joseph M. Cortner	Mr. Michael DiMucci	Mr. and Mrs. Robert E. Engel	Mr. and Mrs. Richard R. Folkerth
Mr. and Mrs. Christopher R. Chard	Cossetta's Italian Market & Pizzeria	Mrs. Helen A. Dingle	Mr. and Mrs. John T. Engman, III	Mr. and Mrs. David C. Ford
Mr. and Mrs. Jeffrey S. Charn	Mr. and Mrs. Peter E. Cote	Clark Dobbs	Mr. and Mrs. James W. Eppel, Jr.	Ms. Anita Forrest
Yzhar Charuzi, M.D.	Ms. Evelyn R. Cotter	Robert Dodd	Mrs. Anne M. Erickson	Mr. and Mrs. Claude B. Forshier
Yap-Yee Ching	Mr. and Mrs. Jerome M. Cotton	Dan Dodds, Jr.	Mr. and Mrs. David A. Erickson	Mr. and Mrs. Gordon C. Foss
Mr. Ranganath Chitturi	Country Inn and Suites - St. Cloud	Mr. and Mrs. Michael T. Dolan	Mr. and Mrs. James H. Esselman	Mr. and Mr. John A. Foster
Mr. and Mrs. Dominic Chlebeck	Mr. Donald H. Courteau	Mr. and Mrs. Lynn A. Donkersgoed	Mr. and Mrs. Robert J. Etten	Mr. William L. Foussard
April Christensen	Courtyard by Marriott	Mr. and Mrs. Paul G. Donlin	Mr. and Mrs. Francis M. Evans	Mr. and Mrs. Gary F. Fox
Mr. Ross L. Christensen	Mr. and Mrs. Ronald Cowley	Mr. Daniel J. Donnelly	Mrs. Pamela Evans	Mr. and Mrs. John W. Fox
Ms. Lisa Christopher	Mr. and Mrs. Daniel Crear	Ms. Jennifer C. Dorris	Evolution Salon	Mrs. Virginia Ruth Fram
Ms. Maria C. Christu	Mrs. Leona T. Criegio	Mr. and Mrs. Larry S. Dotte	Ms. Dorothy J. Ewald	Ms. Elaine M. Francis
Mr. and Mrs. David J. Chuhel	Crown Plaza Hotel	Mr. and Mrs. Timothy Dove	Eyebobs	Mr. and Mrs. Ronald P. Franzen
Mr. and Mrs. James S. Clapper	Mrs. Melissa B. Cullen	Michael Doyle	Dr. and Mrs. Vijay R. Eyunni	Mr. Daniel E. Freier
Dr. and Mrs. Ronald T. Clappier	Patricia Cullen	Ms. Bernice Dozie	Katherine Fandrey	Mr. and Mrs. William T. Friederichs
Cathryn Clardy	Susan Culp	Mr. Mark G. Drayna	Julianne Fanum	Mr. David C. Friedman
Ms. Kathleen E. Cleary	Rita Cunningham	Patrick and Marie Dreschich	James Faricy	Mr. and Mrs. Jerry M. Friedmann
Mr. and Mrs. Keith L. Clement	Bernard Curti	Mr. and Mrs. John G. Dribaum	Mr. Timothy J. Faricy	Mr. Arden J. Fritz
Mr. Roger L. Click	Dacotah Ridge Golf Club	Kathleen Dripps	Mr. Gergory V. Trende and Mrs. Jody L. Fearing-Trende	Mrs. Barbara A. Fritz
Clos Pegase Winery	Mr. Roger J. Dahlke	Patricia Dubberke	Mrs. Jeanne J. Felder	Mrs. Melissa T. Fritz
Mr. and Mrs. Del L. Clough	Debra Dahlstrom	Mr. and Mrs. Chester W. Duck	Joan Felion	Mr. and Mrs. Jeffrey B. Fuge
Mr. and Mrs. David Coates	Dakota Eye Care	Mr. Steven F. Due	Mr. Dennis C. Felling	Mr. and Mrs. Eric Funderburk
Margaret Cochrane, M.D.	Mr. and Mrs. Michael O. Dalager	Richard Dugan	Ms. Karen D. Ferrara	Mr. and Mrs. Richard J. Gabriel
Ms. Cindy F. Cole	Irene Dalbotten	Ms. Susan Dunn	Mr. and Mrs. Joseph A. Ferrazzo	Constance Gade
Kristine Coleman	Amber Daly	Mr. Lam Q. Duong and Mrs. Quyen Vo	Jorge A. Ferreiro, M.D.	Mr. and Mrs. Gerald F. Gallagher
Mr. and Mrs. Lawrence Collette	Mr. and Mrs. Paul Damon	Michael Dustin	Robert Field	Pamela Gallagher
Mr. and Mrs. Richard T. Colvin	The Dancing Fair	Mr. Shawn M. Dwyer	Filtration Systems, Inc.	Mary Gallagher-Pearson
Mr. Thomas P. Commerford	Mr. John D. Darst	Mr. John M. East	Mr. and Mrs. Joseph M. Finley	Mr. and Mrs. Harry Gallaher
Mr. and Mrs. Daniel P. Commers	Mr. Joe Daszkiewicz	Dr. and Mrs. Timothy J. Ebner	Mr. and Mrs. James J. Fischer	Mr. and Mrs. Mark S. Galloway
Community Shares of Minnesota	Milton W. Datta, M.D.	Gretchen Eckes	Annette Fisher	Mrs. Sheri A. Galloway
Mr. Alan Conard	Mr. and Mrs. Donald E. Davidson	Aaron Efron	Ms. Mary Fisher	Mr. and Mrs. Mark J. Gamache
Mrs. Pamela A. Conlin	Ms. Elizabeth Davidson	Mr. Robert D. Eibert	Mr. Dennis J. Flaherty	Mr. Robert E. Garber, Jr.
Mr. Tom Conlon	Toni De Rosier	Mr. and Ms. Terry G. Eichman	Flame	Mrs. Martha S. Garrett
	Mr. and Mrs. Thomas S. Deans	Mr. Charlie Eiler	Mr. Arthur W. Flannigan	Robert Gatti
	Deer Run Golf Club	Mr. Randy C. Einerwold	Mr. and Mrs. Mark T. Flaten	
	Mr. and Mrs. V. Richard DeLong	Mr. David Einynek		
	Ms. Roxann C. Denne			
	Marian Deutschman			

Mr. and Mrs. Ronald E. Gavin	Joseph Griesgraber, Jr.	Mr. and Mrs. James L. Hartmann	Mrs. Judy L. Hoke	Mrs. Dorothy A. Johnson
GE Foundation	Mr. and Mrs. Russell E. Griffin	Lucella Hartwell	Mr. and Mrs. Gregory G. Hollenkamp	Ms. Helen D. Johnson
Mrs. Fenot E. Gebrekidan	Griffin Gate Marriott	Michelle Hartwig	Mr. Thomas P. Holmes	Ms. Judith Johnson
Mr. and Mrs. Alvin E. Geerdes	Mr. and Mrs. Roger B. Griffin	Ms. Margaret M. Hasbrouck	Dr. and Mrs. Arlen R. Holter	Mrs. Laura A. Johnson
Mr. and Mrs. Mark A. Gehl	Roger Griffin	Mr. and Mrs. Carl Hasselquist, Jr.	Mr. and Mrs. Colin C. Hooker	Mrs. Marion L. Johnson
Mr. and Mrs. Brian E. Gehlen	Mr. and Mrs. H. Theodore Grindal	Mrs. Jill M. Hasslinger	Mr. John F. Hoops	Ms. Marsha E. Johnson
Mr. and Mrs. Bill Gengler	Mr. and Mrs. Donald A. Grindstaff	Mr. and Mrs. Donald R. Haukeness	Mr. Thomas D. Hope	Patricia Johnson
Ms. Heather R. Gensen	Mr. Stan Groff	Mrs. and Mr. Debra Hawn	Mr. Stephen L. Hopkins	Mr. Paul L. Johnson
Ms. Cynthia K. Gerlach	Mr. and Mrs. Steven G. Groves	Mrs. Susan M. Hayes	Gael Horner	Ms. Sandra L. Johnson
Lisa Gersema	Mrs. Sara J. Gruber	Ms. Bonnie E. Haynes	JoAnn Horrisberger	Mr. and Mrs. Terry K. Johnson
Richard Gieske	Ms. Ellen M. Gruening	Ms. Patricia Hazzard	Mr. John J. Horvei	Mr. Thomas C. Johnson
Mrs. Carol J. Gilbert	Mr. and Mrs. Steven A. Grufman	Mrs. Penny R. Heaberlin	Mr. and Mrs. George J. Hosch	and Ms. Jennifer L. Syltie Johnson
Mr. and Mrs. Edward G. Gillstrom	Mr. and Mrs. George Gubash	Mr. James V. Hedin and Ms. Edwilda M. Debruyne	Wendi Houle	Thomas H. and Kristen E. Johnson
Toi Gilmore	Lachandra Gums	Deborah Heimerl	Mr. and Mrs. Dennis P. Houlton	Ruby Johnston
Mr. Matthew E. Gilson and Mrs. Barbara B. Schulman	Barbara Gunderson	Mr. Duane B. Held	Mr. and Mrs. Jeffrey A. Hrustich	Dr. and Mrs. John W. Jones
Mr. and Mrs. Thomas M. Gisch	Mr. and Mrs. Robert J. Gunderson	Mr. and Mrs. Brian A. Helmken, Jr.	Barbara Hubbard	Mr. and Mrs. James R. Jordan
Ms. Barbara Gittes	Ms. Sarah Gustafson	Ms. Annalea H. Helms	Mr. and Mrs. Robert W. Hubbard	Mr. and Mrs. Paul R. Jordan
Ms. Paula Glieder	The Guthrie Theater	Verlyn D. Hemmen	Ms. Judith A. Hughes	Ms. Mary L. Jordan
Frances S. Go, M.D.	Mr. and Mrs. Eric M. Gydesen	Mary Hennen	Mr. Michael Hughes	Mrs. Theresa M. Joseph
Mr. Timothy Gobely	Mr. David Hackler	Hennepin Faculty Associates	Mr. Ernest A. Huland	Mr. and Mrs. Michael A. Kaess
Mr. and Mrs. James Goddard	Mrs. Joni E. Hagebock	Mr. and Mrs. Robert A. Henning	Mr. John Humphrey	Mr. Gary M. Kahler
Dr. and Mrs. Barry R. Godes	Hair Professionals	Mr. and Mrs. Phillip D. Herbert	Mr. and Ms. Dennis A. Hunchar	Mr. and Mrs. Bradley W. Kahley
Dr. and Mrs. Timothy C. Goertzen	Ms. Glory A. Hallgren	Mr. and Mrs. Eldon D. Herum	Mrs. Sandy Hunter	Saed Kakish
Ms. Cynthia L. Goff	Mr. and Mrs. Edward F. Hally	Mr. and Mrs. Fred J. Herwers	Mr. and Mrs. Paul I. Hyland	Mrs. Sharon Kambeitzlumphrey
Mr. and Mrs. Neal M. Goiffon	Mr. Clayton D. Halunen	Mr. John L. Heyn	Dr. and Mrs. Craig L. Hyser	Debra Kammerer
Rachel Golias	Gale Halvorson	Marijo Hickok	Mr. Richard Ieien	Ms. Kathryn Kamrowski
Mrs. Maria R. Gomez	Mr. and Mrs. Scott R. Hamman	Ms. Lynn N. Higgins	Illusion Theater	Mr. and Mrs. James R. Kandels
Ramon Gomez	Mr. and Mrs. Richard L. Hammel	The Hilton Minneapolis South	Cheryl Indehar	Charlene Kandt
Dr. and Mrs. William M. Goodall	Hampton Inn - Eden Prairie	Mr. and Mrs. Stephen J. Hilton	Mr. and Mrs. Harold Iverson	Mrs. Jean C. Kane
Mr. and Mrs. Stanley B. Goodman	Mr. Lance A. Handy	Mr. and Mrs. Robert L. Hinton	Mr. and Mrs. Dennis W. Jabs	Mr. and Mrs. Thomas P. Kane
Dr. and Mrs. Joseph J. Goswitz	Mr. and Mrs. Michael J. Hangege	Mr. and Mrs. Donald W. Hinze	Ms. Pearl A. Jackson	Mr. and Mrs. Reuben Kaplan, Jr.
Mrs. Paula M. Graff	Mr. William A. Hanggi	Mr. and Mrs. Gerard W. Hirschhorn	Ms. Ruth Jacobowitz	Dr. and Mrs. Don Kapps
Ms. Mary L. Grahek	Mr. Charles Hansen	History Theatre	Barbara I. Jacobs, R.N.	Mr. and Mrs. Brent A. Karkula
Grand Casino Mille Lacs & Grand Casino Hinckley	Ms. Dorothy M. Hanson	Ms. Catherine J. Hochhalter	Mr. and Mrs. Allen V. Jacobs	William Karkula, Jr.
The Grand Hand Gallery	JoAnn Hardegger	Mr. and Mrs. Michael J. Hochstetler	Mrs. Margaret M. Jaworski	Mr. and Mrs. Charles Katz
Mr. and Mrs. Patrick C. Gray	Mr. James C. Hardman	Mr. David P. Hodgson and Mrs. Janeice A. Delisle	Jax Cafe	Mr. and Mrs. Stuart Kaufman
David Greavu	Chief John M. Harrington	Mr. and Mrs. Walter W. Hodgson	Mr. and Mrs. Gregory G. Jeffrey	Mrs. Constance M. Keefe-Smith
Mr. Frank C. Green	Ms. Kelly L. Harris	Mr. and Mrs. David Hoeffel	Mr. and Mrs. Jeff Jelinek	Mr. Jeffrey J. Keeler
Mrs. Janet M. Green	Mr. and Mrs. Chester J. Harrison, Jr.	Mr. and Mrs. Allen Hohenwald	Mrs. Merlee S. Jensen	Mr. and Mrs. James A. Keller
Mr. and Mrs. Randall Greenly	Mr. and Mrs. Jim Fitzgerald		Joe's Sporting Goods	Mrs. Amy E. Kelly
Mr. and Mrs. Jonas Grice	Mr. and Mrs. Lawrence Hartman		Ms. Betty Lou Johnson	Mr. and Mrs. Gerald L. Kelly
			Mr. and Mrs. Curtis W. Johnson	Mr. Carlos A. Villalpando and Mrs. Norah J. Kelly

2008 United Hospital Donors

Mr. and Mrs. Steven J. Kelly Donna Kelsen	Mr. Trevor J. Kukowski Mr. Martin Kummer	Mr. and Mrs. Timothy R. Levi	Mr. and Mrs. Thomas F. Madison	Mr. and Mrs. Brian S. McCool
Mr. James W. Kenney	Kathleen Kuntz	Mr. and Mrs. Stephen E. Lieberman	Ms. Laura Mager	Dr. and Mrs. Stanley R. McCormick
Mr. Eli S. Sagor and Mrs. Amy Kerber-Sagor	Mr. and Mrs. Gary F. Kupferschmidt, Jr.	Mr. and Mrs. Scott Lifson	Mr. and Mrs. John Maguire	James McCoy
Mr. and Mrs. Roger J. Kessler	Mr. Byron Kuss	Mr. and Mrs. Jeffrey R. Lillehei	Mrs. Arlene R. Mahoney	Mr. Edison McDaniels
Mr. William K. Keuhn	Florence La Plante	Mr. and Dr. Kent O. Lillemoe	Ms. Patricia M. Maietta	Mr. James R. McDonagh
Ms. Angela Kiefer	Mrs. Ruth F. Lackner	Neil Lillie	Ms. Susan M. Mairs	Mrs. Wendy M. McDonald
Ms. Danielle Kile	Dr. and Mrs. James W. LaFave	Mr. and Mrs. Jesse K. Lilligren	Ms. Jenna L. Majewski	William C. McDonald, M.D.
Mr. Edward J. Kintop	Lake Elmo Inn	Mr. Ojars Linde	Mrs. Barbara Malamen	Mr. and Mrs. William J. McDonald
Mrs. Kandi E. Klamm	Doug and Brenda Lamb	Ms. Brenda L. Lindner	Cheryl Malm	Ronald McFall
Ms. Rosemary Klatt	Mr. and Mrs. Frank V. Landeen, Jr.	Dennis Lindquist	Mr. Leslie C. Malmquist	Mr. Kenneth C. McGinley
Mr. and Mrs. Bob Kleba	Dr. and Mrs. Miles I. Lane	Mr. and Mrs. J. Nicholas Linsmayer	Mrs. Mary Ann Mancini	Mr. and Mrs. Philip P. McGuire
Ms. Jeannie Klein	Mr. Steven Lange	Mr. Terry M. Lipelt	Mr. and Mrs. Terrence J. Manke	Mr. and Mrs. Thomas D. McGurk
Mr. and Mrs. Robert D. Klepperich	Mr. and Mrs. Paul T. Larsen	Erma G. Lipschultz	Manny's Steakhouse	Mr. Christopher J. McIver
Mr. and Mrs. Thomas R. Kluge	Carol Larson, M.D.	Ms. Jane Ljungkull	Mr. and Mrs. Edward N. Mansur, Jr.	Mr. and Mrs. Charles E. McJilton
Mr. and Mrs. Henry S. Knoll, Jr.	Mr. and Mrs. Gary R. Larson	Mr. Maximilian G. Locher and Mrs. Nancy A. Murphy	Mrs. Jo L. Marcotte	Mr. and Mrs. Timothy McKee
Mr. and Mrs. Gary S. Koecheler	Mrs. Marjorie K. Larson	Mr. and Mrs. Richard A. Lockridge	Ms. Elizabeth Marks	Mr. and Mrs. Donald L. McKoskey
Ms. Carolyn Koehler	Mrs. Julie M. Larson	The Lodge at Giants Ridge	Rosemary Marley	Ms. Gloria F. Mcleod
Mr. James T. Koehler	Dr. Gerald L. Konkol and Ms. Christine V. Lassa	Mr. Don Martin and Ms. Lisa A. Loeding	Marriott - The Cornhusker	Mary McMillan
Scott Koester	Ms. Helen C. Lattary	Mrs. Eunice H. Logan	Mr. and Mrs. Richard C. Marshall	Mr. James McNamara
Ms. Paula J. Kolbet	Mrs. Cassandra L. Lavalie	Ms. Marguerite Long	Mr. Jeffrey Martinka and Mrs. Tessa Coons	Sally McNamara
Gerald Konkol, M.D.	Mr. and Mrs. Daniel G. Lavin	Patricia Long	Ms. Julene R. Maruska	Mr. and Mrs. Thomas M. McNamara
Dr. and Mrs. Emil D. Koretzky	Mr. and Mrs. Robert G. Lawrence, III	Mr. and Mrs. Cory A. Long	Corinne Mase	Ms. Linda McWilliams
Mr. and Mrs. H. Lauson Kostka	Ron Lawrence	Mr. Thomas G. Lorentzen	Mary Jane Maser	Mr. and Mrs. Chander Mehta
Barbara Kovarik	Ruby Lawrence	Mr. and Mrs. Louis E. Losinski	Mr. Don M. Mason	Ms. Mary Jane Melnick
Mr. and Mrs. Jared A. Kovarik	Ms. Julie A. Layer	Edward Lotterman	Mr. and Mrs. Thomas L. Mason	Mr. and Mrs. Alan J. Melnychuk
Mrs. Stephanie L. Kovarik	Mrs. Christine M. Lee	Mr. and Mrs. Michael E. Lowe	Robert Matejcek	Mr. and Mrs. Edward C. Mendrzycki
Ms. Debra L. Kowalski	Mr. and Mrs. James A. Lee, Jr.	Mr. and Mrs. Henry L. Lozano	Mr. and Mrs. Joseph Y. Matsumoto	Mr. and Mrs. J John Mercado
Mr. Michael J. Kramer	Mr. Olaf L. Lee	Mrs. Lori E. Lucke	Mrs. Jennifer B. Mattson	Janet Merimonti
Laurel Krause, M.D.	Ms. Mary J. LeGrand	Mr. Charles H. Ludwig	Mr. and Mrs. John R. Maule	Meritage Restaurant
Mr. and Mrs. Daniel M. Krause	Steven Leguil	Mr. Michael E. Luger	Mr. James E. and Dr. Vicki L. Mayer	Mr. and Mrs. Thomas J. Mero
Mr. and Mrs. Steve I. Krause	Mr. and Mrs. Matt Lehmann	Mr. and Mrs. John H. Lund	Mr. and Mrs. Robert F. Mayer	Robert Merrill
Mrs. Carrie L. Krawetz	Mrs. Pamela Lehmann	Mr. and Mrs. Daniel M. Lundblad	Vicki Mayer	Mr. and Mrs. Wilfred R. Merton
Eugene Krech	Mr. and Mrs. Lee Leidal	Mr. and Mrs. Alan R. Luthi	Mr. Eric McBrayer	Ms. Laura L. Messenger
Mr. Matthew T. Mikulski and Mrs. Kaleen Kregel-Mikulski	Ms. Paula D. Lendobeja	Mrs. Lori E. Lucke	Mr. Eric A. and Dr. Wendy M.N. McCabe	Ms. Judith T. Messner
Ms. Katherine A. Kriha	Mr. and Mrs. Steven E. Lentsch	Mr. and Mrs. Harold S. Lyman	Mr. and Mrs. James M. McCaffrey	Ms. Jane E. Metcalf
Mr. James T. Krizak and Mrs. Christina R. Palme-Krizak	Dr. and Mrs. Stanley A. Leonard	Ms. Lisa L. Lyons	Christopher McCain	Mr. Christopher Meyer
Mr. and Mrs. Randall J. Kroll	Mr. and Mrs. David P. Leonidas	David Maas, Jr.	Mrs. Mabel D. McCain	Mrs. Cynthia A. Meyer
Mr. and Mrs. William T. Krongard	Cynthia Leshner	Ms. Shannon Mackey Bojack	Mr. and Mrs. Peter A. McCarron	Mrs. Dorothy J. Meyer
Mrs. Nancy C. Kruse	Mr. and Mrs. Vernon E. Letendre	Mr. Mark Mackmiller	Mr. and Mrs. Richard D. McCartan	Victoria Michaels
Mr. and Mrs. James D. Kuhn	Mrs. Maxine A. Letourneau	Lori Madden, R.N.	Mr. Richard D. McCartan	Hilda Mickelson
	Ms. Susan I. Letourneau	Ms. Stacy M. Mader		Microsoft Giving Campaign
		Mrs. Stephanie R. Madhok		

Mr. and Mrs. Patrick E. Midden	Mr. and Mrs. Alrid L. Mueller	Eileen Nikolas	Our Team Advantage, Inc.	Mr. and Mrs. Richard L. Pinomaki
Mr. Aaron Milbank and Mrs. Amelia L. Burgess	Mr. Greg J. Mulally	Mr. Steven P. Nipp	Mr. and Mrs. David S. Overman	Mr. Gerald D. Pint
Mildred Miller	Mr. and Mrs. Bruce Mulligan	Mr. Patrick Nolan	Drs. John W. Overton and Ann C. Lowry	Mrs. Patricia A. Pitera
Mrs. Leslie A. Millikan	LeVonne Mulrooney	Nozette Foundation	Mrs. Marilyn S. Page	Werner Pitzen
Mr. Larry W. Milliren	Mr. and Mrs. Paul C. Munkholm	Mr. and Mrs. Dennis L. Nyhus	Nancy Palda	Mr. and Mrs. Thomas J. Podgorski
Sandra Milton	Mr. and Mrs. John S. Mutch	Oak Park Hair Designers, LLC	Ms. Nancy L. Palma	Mr. and Mrs. Warren L. Podratz
Mr. Henri G. and Dr. Susan E. Minette	Ms. Joanne L. Myhre	Mr. and Mrs. Kevin A. Oak	Mr. Vincent J. Palodichuk	Theresa Pollnow
Mr. and Mrs. Malachy A. Mingo	Mystic Lake Casino & Hotel	Mr. and Mrs. Douglas S. Oakes	Mr. and Mrs. Tony Paquette	Mrs. Hedera L. Porter
Minneapolis Marriott City Center	Mrs. Rachel J. Nagengast	Mr. Thomas Obiadazie	Ms. Lisa L. Paredes	Porterhouse Steak and Seafood
The Minnesota Orchestral Association	Mr. and Mrs. Ralph V. Nardini, Jr.	Richard O'Connor	Park Square Theatre	Mrs. and Mr. Barbara P. Poschbranigan
Minnesota Thunder	Dyann Nasseff	Mr. and Mrs. Thomas D. O'Connor	Mr. and Mrs. Vincent D. Parker	Mr. and Mrs. Marc A. Post
Mr. Michael P. Miranowski	Mrs. Geraldine M. Nasseff	Mr. and Mrs. Harvey J. Oestreich	Phyllis Parr	Mr. Donald G. Posthumus
Mission American Kitchen & Bar	Mr. Rudy Nassif	Harold Oien, Jr.	Patricia Parrish	Mr. and Mrs. Douglas A. Powell
Mrs. Karen A. Mitka	Ms. Sharon Neal	Mrs. Carol H. O'Keefe	Mr. Clarence Purfeerst and Mrs. Janet G. Paulsen	Linda Powers
Mrs. Laura K. Mitricska	Mr. and Mrs. Daniel J. Nechville	Thomas Okner, M.D.	Mr. and Mrs. Gary L. Paulson	Mrs. Julianne H. Prager
MN Best Enterprise Inc.	Ms. Cynthia M. Nedved	Mr. and Mrs. Miti A. Olariu-Tau	Lee Paulson	Mr. and Mrs. Stephen Prager
Mr. and Mrs. Roger D. Moberg	Averial E. Nelson, Jr., M.D.	Ms. Paulette J. Olsen	Peapods Natural Toys	Leslie Prael
Mr. John P. Moe	Mrs. Catherine M. Nelson	Mr. and Mrs. Robert J. Olsen	Madge Pederson	Mr. Dennis O. Prawdzik
Mr. and Mrs. William P. Moeller, Jr.	Mr. and Mrs. David P. Nelson	Mr. and Mrs. A. Richard Olson	Peju Province Winery	Mr. and Mrs. Dennis J. Prchal
Mr. and Mrs. William R. Mogren	Mr. and Mrs. Darryl A. Nelson	Mrs. Christine M. Olson	Mr. Tony A. Pelzel	Bette Rae Preus
Edward Molamphy	Mr. and Mrs. David P. Nelson	Dr. and Mrs. David A. Olson	Mr. and Mrs. Kip E. Pendleton	Mr. and Mrs. Scott D. Pribula
Mrs. Eleanor A. Mommsen	Mrs. Shari Nelson	Mr. and Mrs. David S. Olson	Penumbra Theatre Company	Ms. Pamela Pridgen
Mr. and Mrs. Gordon V. Mommsen	Mr. and Mrs. Gregg B. Nelson	Karen Olson	Mr. and Mrs. Robert A. Pereson	Patricia Prokosch
Mr. and Mrs. James M. Mondry	Mr. and Mrs. Kenneth J. Nelson	Mr. and Mrs. Kenneth O. Olson	Mr. and Mrs. Arturo Perez	Mr. Clarence Purfeerst and Mrs. Janet G. Paulsen
Ms. Tonya R. Montesinos	Mr. and Mrs. Kerry S. Nelson	Mr. and Mrs. Lester R. Olson	Judith Perrault	Mr. and Mrs. Raymond J. Quast
Deborah Montgomery	Mr. and Mrs. Kerry S. Nelson	Mr. and Mrs. Robert D. Olson	Mrs. Lisa C. Pesigan	Mr. and Mrs. Michael D. Quayle
Mr. and Mrs. Joel A. Montpetit	Marcia Nelson	Mrs. and Mr. Suzanne V. Olson	Drs. John W. and Lois C. Peters	Mr. and Mrs. Bill S. Quinn, Jr.
Judith Montpetit	Mr. Morgan K. Nelson	Mr. and Mrs. Wallace B. Olson	Ms. Carole M. Peterson	Mr. and Mrs. James J. Racek
Mr. and Mrs. James E. Moore	Mr. and Mrs. Kerry S. Nelson	Mr. Wallace B. Olson	Donald Peterson	Susan Rainey
Mr. and Mrs. Michael T. Moore	Mr. Richard J. Nelson	Judith Olstad	Mr. and Mrs. Jeff D. Peterson	Nancy Ramsey
Ms. Shirley K. Moore	Mr. Merritt C. Nequette	Ms. Cynthia J. Omann	Mrs. Joanne P. Peterson	Rapala
Jonathan C. Moren, D.D.S.	Mrs. Vicki K. Neumann	Mrs. Rosemary L. Oolman	Peterson Milla Hooks, Inc.	Mr. and Mrs. Greg Rasmussen
Mr. and Mrs. Charles W. Morgan	New Richmond Golf Club	Mr. and Mrs. Daniel Opare-Addo	Mr. Robert E. Peterson	Mr. and Mrs. Gary L. Rasmussen
Mr. John Moriarty	Jennifer Newlun	Mrs. Yasmin A. Orandi	Mr. and Mrs. Russell L. Peterson	Mr. and Mrs. James T. Rauscher
Christina Moss	Esther Newman	Mr. and Mrs. Jerome M. Organ	Mr. and Mrs. Arthur E. Pew, III	Dr. and Mrs. Harold G. Ravits
Mr. James F. Mossman	Thu Thuy Nguyen	Mr. and Mrs. Thomas W. Orr	Mr. John R. Pfeifer	Mr. David B. Redmond
Ms. Molly Motzer	Mr. and Mrs. Ford J. Nicholson	Mr. and Mrs. John Ostendorf	Ms. Tracy Piefer	Ms. Katrina R. Reed
Saeid Movahedi-Lankarani, M.D.	Mr. and Mrs. Kevin C. Nicol	Mr. Gary Osterbauer	Mr. and Mrs. Phillip A. Phelon	Mr. Donald L. Reeder and Mrs. Mary M. Speranza-Reeder
Mr. and Mrs. Christopher C. Mudgett	Mrs. Ardelle F. Nicoloff	Ms. Arlene A. Osterman	The Photographers Guild	
	Mr. and Mrs. Gerald F. Niehaus	Ms. Barbara A. Ostroski	Natalie Pieper	
	Mr. Thomas J. Nikolai, Jr.	Mr. and Mrs. Thomas L. Otto	Alice Piegras	
			Mrs. Bianka H. Pineda	

2008 United Hospital Donors

Mr. Jeremiah Reedy	Mr. and Mrs. Jeff Rountree	Mr. and Mrs. Keith A. Schuler	Mr. and Mrs. James S. Simpson	Mr. and Mrs. David R. Stecher
Mr. and Mrs. Joseph W. Regenscheid	Mrs. Melinda A. Rountree	Mr. and Mrs. David W. Schultz	Mr. and Mrs. Thomas Skare	Mrs. Sylvia J. Stecher
Ms. Susan Rehberger	Mr. Jon S. Rousu	Mrs. Hazel E. Schulze	Mr. Alan Skjefte	Mrs. Kathleen M. Stechmann
Mr. and Mrs. Jeffrey S. Reid	Brynhild Rowberg	Mr. Nicolas Passell and Mrs. Caryn Schulz-Passell	Mr. Thomas A. Skoien	Theresa Steeper, M.D.
Mr. Michael D. Reif and Ms. Emily Byrne	Mr. and Mrs. David A. Ruch	Mr. and Mrs. Peter F. Schuna	Mr. and Mrs. Mark J. Slagle	Mrs. Adrienne E. Stegmeir
Mr. and Mrs. Emil F. Reiher, Jr.	Mr. and Mrs. Lyle D. Rust	Mr. and Mrs. George F. Schuneman	Mrs. Linda Slattengren	Ms. Erin Steiner
John Reinartz, M.D.	Mr. and Mrs. Vernon W. Ruttan	Mr. and Mrs. James R. Schute	Mr. and Mrs. David S. Sloan	Mr. and Mrs. James G. Steinwand
Mr. and Mrs. Brian E. Renstrom	Mr. and Mrs. Ronald M. Ryan	Ms. Mary Schwartzbauer	Mr. Glenn Smith	Jane Stenholm
Mr. and Mrs. David Rettner	Mr. and Mrs. Perry M. Rynders	Mr. and Mrs. Thomas B. Schway	Mr. and Mrs. Gregory M. Smith	Mr. and Mrs. David C. Stenseth
Anne Reusch-Delaney	Ms. Patricia L. Saari	Mr. and Mrs. David J. Schwietz	Mr. and Mrs. Greg Smith	Mr. John Stieger
reVamp! Salon	Mr. and Mrs. Gerald F. Sadowski	Mr. and Mrs. Daniel L. Scott	Mr. and Mrs. Richard E. Smith	Dr. and Mrs. Kevin T. Stieglbauer
Mr. Thomas M. Reynen	Mr. and Mrs. Dennis E. Sager	Mr. and Mrs. Richard W. Scott	Mr. and Mrs. William K. Smith	Elizabeth Stockton
Mr. and Mrs. Ben B. Richards	Pamela Sakkinen, M.D.	Mr. and Mrs. Joseph W. Searles	Mr. and Mrs. William P. Snoke	Mr. and Mrs. David A. Stofferahn
Nancy Richey	Mr. Leland J. Salisbury	Ms. Janice C. Seefert	Solera	Elizabeth Stofferahn
Mr. Thomas A. Riebe	Mr. and Mrs. Mark Salisbury	Mr. Martin A. Segal	Solimar Wellness Spa	Mr. and Mrs. Urban T. Stolpman
Paul and Irene Rifkin	Ms. Teresa Salvati	Mr. and Mrs. Donald Seitz	Mr. and Mrs. Ralph E. Sunday	Mr. Warren E. Stone
Mr. Randy A. Smith and Dr. Linda H. Riley	Mrs. Donna B. Samelian	Mr. and Mrs. Loren L. Selvig	Mr. and Mrs. Michael J. Sorenson	Mr. Daniel R. Stout
Mr. and Mrs. Ronald A. Ringsven	Mary Samoszuk	Mr. Dennis J. Semerad	Virginia Soto	Mr. and Mrs. Ronald J. Strachan
Mr. and Mrs. Ben S. Rinkey	Mr. Steven Sancho	Mr. and Mrs. Dennis L. Senneseth	Spartan Promotional Group, Inc.	Ms. Charlane M. Strand
Mr. and Mrs. Drake J. Rippelmeyer	Mr. and Mrs. Gerald M. Sande	Ms. Juliet B. Seropian	Dr. and Mrs. Michael Spence	Ms. Constance M. Strand
Mr. John A. Ritt	Roxanne Sander	Ms. Mary Severson	Mr. John H. Sperl, Jr.	Erika Strege
Mr. and Mrs. Robert M. Ritter	Mr. Alan G. Sandkamp	Abdolreza Shafei	Mr. Daniel J. Spiegel and Mrs. Marilyn Jax	Dr. and Mrs. John G. Strickler, Jr.
Kathleen Rivard	Beatrice Santos	Ms. Jane B. Shanard	Kathleen Spilman	Dr. and Mrs. James C. Strom
Mr. and Mrs. Manuel A. Rivera	JoAnn Sauro	Mr. Rajiv Sharma	Laurie M. Squillace	Mr. and Mrs. Gary J. Strong
Mr. and Mrs. Robert Y. Roberge	Ms. Laurie A. Savino	Mr. and Mrs. Ian G. Shaw	Mr. and Mrs. James A. Squires	Suburban Floor Covering
Mr. and Mrs. Duane C. Roberts	Mr. and Mrs. Robert D. Schaefer, Jr.	Mr. Richard Sheffler	Mr. and Mrs. John Squires	Joan Sundsmo
Mr. James P. Rodgers	Mrs. Michele G. Scheid	Jack B. Shelton, M.D.	St. Agnes Catholic School	Mr. and Mrs. Daniel L. Sundsmo
Mr. Richard W. Rodgers	Mr. and Mrs. Richard L. Scheid	Drs. Robert and Barbara Sherman	St. Paul Chamber Orchestra	Mrs. Cynthia M. Surrisi
Mr. and Mrs. Myron L. Rogers	Mr. Frank Schiefelbein	Mrs. Sarah L. Shields	St. Paul City Ballet	Mr. and Mrs. Andres Sustic
Anita Romani	Mr. and Mrs. James M. Schiltgen	Kathy Shimada	St. Paul Fire Department	Mr. and Mrs. Michael R. Sutton
Mr. Luis Rosario	John Schletty	Mr. Walter J. Shiner	St. Paul Harley Davidson	Sherrell Svec
Mr. Pablo Rosario	Rebecca Schletz	Mr. Bruce A. Shirley	St. Paul Police Department	Ms. Elizabeth M. Svendsen
The Rose Ensemble	Mrs. Carol Schlomka	Mr. and Mrs. David Shore	Mrs. and Mr. Audrey M. St. Peter	Mr. John A. Shabatura and Mrs. JoAnn Svensson-Shabatura
Mr. and Mrs. Michael L. Rose	Kathleen Schmit	Ms. Elaine Shriver	Mr. and Mrs. Bernard V. St. Peter	Mr. and Mrs. Norvin L. Swager
Mrs. and Mr. Patricia Rose	Mr. Steven Schmoeckel	Mrs. Erin A. Siddiqui	Mr. Anthony P. Stael	Mrs. Arlene M. Swain
Mrs. and Mr. Deborah D. Rosenthal	Mrs. Kathleen R. Schoenbeck	Dr. and Mrs. Steven W. Siegel	Mr. and Mrs. Wyatt K. Stahl	Mr. and Mrs. Thomas H. Swain
Mr. and Mrs. James E. Rosenthal	Mr. Leroy A. Schommer	Ms. Darlene Silvernagel	Mr. Michael Stamos	Ms. Kris Swanson
Mrs. Virginia V. Ross	Mr. and Mrs. Brian W. Schousek	Silvernagel Ltd.	Dr. and Mrs. Michael W. Stanley	Mr. Loren Swanson
Mr. and Mrs. Allan B. Rossman	Linda Schroepfer	Mr. Kamal H. Simon	Dr. and Mrs. Jacques P. Stassart	Mr. and Mrs. Peter D. Swanson
	Ms. Melissa T. Schuh	Mr. and Mrs. Michael L. Simon		
	Mr. and Mrs. Robert F. Schule	Mr. and Mrs. Floyd L. Simonson		

Mr. and Mrs. Patrick M. Sweeney	Mr. and Mrs. Dean G. Trampe	Mr. and Mrs. Barry B. Wallin	Mr. Thomas R. Wilhelmy
Ms. Sonya Sweeney	Vickie Tremper	Mrs. Jan M. Wallin	Mr. and Mrs. Richard A. Wilhoit, Jr.
Mr. and Mrs. Norman P. Sweeny	Mr. Warren C. Triplett	Ms. Marilyn Walrath	Mr. and Mrs. Gerald P. Wilkins
Mr. Edward A. Swenson	William Trow	Mr. Daniel P. Walsh	Stephen Willard
Gregory Swenson, D.D.S.	Mr. and Mrs. Michael Trucano	Walsh Design Group	Mr. and Mrs. Seth F. Williams
Jeanette Swenson	Mr. and Mrs. David E. Tucci	Harry Walsh	William Williams
Mrs. Martha L. Swenson	Ms. Leah Tuccitto	Mr. and Mrs. Steve Walsh	Ms. Judy Wilson
Mr. and Mrs. Robert E. Swenson	Mrs. Barbara Tuchtenhagen	Leonard Walsh	Mr. and Mrs. Donald S. Winger
Mr. and Mrs. John Swol	Mr. and Mrs. Dale S. Tucker	Ms. Carolyn L. Walters	Mr. Brad Wings
Anil K. Tadavarthy, M.D.	Mr. Bruce M. Tuckner	Ms. Mary Beth Wanzek	Marilyn Wirth
Mr. James E. Tako	Mr. and Mrs. William P. Turcotte	Mary Ware	Ms. Mary A. Witcik
Tamarack Consulting, Inc.	Mrs. and Mr. Judith M. Turk	Mrs. Karen A. Warrings	Mr. and Mrs. Wayne C. Wittman
Ms. Deola Tappe	Annette Turner	Mr. and Mrs. Bradley Wasilk	Mr. and Mrs. Robert J. Wittman
Mr. and Mrs. Charles A. Tarino	Mr. and Mrs. Charles E. Turning	Mr. and Mrs. Thomas Wason	Mr. and Mrs. Wayne C. Wittman
Dr. Joseph H. Tashjian and Mrs. Kay Savik	Mrs. Kathleen J. Turunen	Mr. and Mrs. Herbert W. Wassermann	Mr. and Mrs. Lynn E. Wogen
Ms. Janice Taylor	Twin Cities Airport Marriott Courtyard	Mr. and Mrs. William G. Waterkamp	Mr. and Mrs. Peter Wolf
Ms. Tina Teague	Twin City Attorneys, PA	Mr. and Mrs. Steven J. Waters	Kathryn Wolff
Ms. Ann Tegan	Mr. and Ms. Gordon T. Ueland	Mr. and Mrs. Stephen J. Watry	Mr. and Mrs. Terry L. Womack
Mr. and Mrs. James R. Telschow	Mr. Matthew Uhrich	Ms. Linda J. Watson	Mr. and Mrs. Donald F. Wood
Ms. Nancy Terrett	Mr. and Mrs. Stuart B. Utgaard	Mr. and Mrs. Adam M. Waud	Mr. Wayne A. Woodford
The Sawdust Factory	Mr. and Mrs. Jovito Valbuena	Ms. Anna M. Way	Christine Woodward
The Freier Family Foundation, Inc.	Uma S Valeti, M.D.	Mr. Donald M. Weber	Xcel Energy - Newport, MN
Ms. Jill Thole	Mr. and Mrs. Dennis E. Van Roekel	Mr. and Mrs. Eldon J. Weber	Mr. Kasey D. Yahnke
Ms. Kathleen M. Thomas	Dr. and Mrs. Robert A. Van Tassel	Sarah Weddell	Mrs. Kerry R. Yanez
Mr. Richard Thompson	Mr. and Mrs. Donald Varey	Mr. Jason Wehlage	Mrs. Phyllis C. Yanz
Mr. and Mrs. Ralph O. Thrane	Mrs. Michelle G. Vassarharrell	Ms. Elaine M. Weichman	Mrs. Martha M. Yonker
Mr. David A. Thue	Mr. and Mrs. James A. Vaughan, Jr.	Ms. Barbara Weiland	Mr. James A. Young and Mrs. Coriahna M. Rude-Young
Sharon Thuecks	Mr. and Mrs. George L. Vennemann	Mr. and Mrs. Robert J. Weisenburger	Ms. Joan C. Young
Ms. Teresa M. Tierney	Victory Fitness, LLC	John Welckle	Pamela Young
Ms. Patricia K. Tillman	John Villa	Mr. and Mrs. James N. Wells	Mr. Duane L. Zabinski
Tinucci's Restaurant	Dr. and Mrs. Zeev A. Vlodaver	Ms. Barbara Weiland	Mrs. Karen E. Zalewski
Mr. Edward D. Lotterman and Ms. Victoria E. Tirrel	Mrs. Ruth Ann Vohs	Mr. and Mrs. Raymond J. Welsh	Mr. Jesse K. Lilligren and Mrs. Sandra L. Zapata-Lilligren
Ms. Sharon L. Tix	Helmer Voigt	Mrs. Debra L. Wenlund-Glaser	Mr. Mario J. Zarama
Ms. Joy A Tkachuck	Mr. and Mrs. Robert S. Voigt	Mr. and Mrs. Greg Wennes	Mr. and Mrs. Mark Zauhar
TK's Coffee	Mr. Michael Volkenant	Robert W. Werling, M.D.	Mr. Richard E. Zeuli
Mr. and Mrs. John F. Tocko	Mr. and Mrs. E. T. Volkmeier	Mrs. Kathryn A. Westman	Mrs. Patricia K. Ziaja
Mr. and Mrs. Phillip J. Toconita, Jr.	Mr. and Mrs. Nicholas C. Voynovich	What's New In Gifts	Mr. and Mrs. Gerald E. Zierdt
Mrs. Geraldine Todd	Mr. Jason Wagner	Susan Wheaton, M.D.	Mr. and Mrs. Jeffrey A. Zimmerman
Mr. and Mrs. Henry S. Todd	Mrs. Mary A. Wahl	Ms. Katura L. Whistler	Denise Zinger
Ms. Brianna Tongen	Mr. Ernest Walker	Mr. John C. Whitaker	Stephanie Zurek
Mr. and Mrs. Charles R. Torman		White Bear Locksmith, Inc.	
Trade Secrets		Mr. and Mrs. Stuart T. White	
		Ms. Sheila K. White	
		Mr. David J. Wickersham	
		The Wilds Golf Club	

We apologize for any errors or omissions that may appear in this listing. Please contact the United Hospital Foundation at 651-241-8022 with questions or corrections.

United Hospital Foundation's Honoring program offers a distinctive and meaningful way to remember, honor, pay tribute or recognize those important people in your life. By giving in remembrance, you offer a gift of lasting memory.

United Hospital's continued strength results in large measure from the support received from generous individuals like you. The financial commitment of our community members enables United Hospital Foundation to invest in important projects at United – supporting the best in quality health care for our patients while meeting the needs of our donors. The following are memorial/tribute gifts received from October 1, 2008 through February 28, 2009.

In memory of

Audrey Allen

Mr. and Mrs. Gerald R. Mulcahy

Howard Applebaum

Karen and Bruce Gershman

Sam Bankhalter

Mr. and Mrs. Steven I. Krause

Zollie Baratz

Mr. and Mrs. Steven I. Krause
Susan and Paul Yellin

Myrtle Bierbrauer

Mr. and Mrs. Richard J. Durgin

Reuben Birnberg

Mrs. Marjorie Edwards

George Tom Blue, Jr.

Dick Sawyer and Stacy Sargent

Harry Brittan

Mr. and Mrs. Luigi Andretta
Mr. and Mrs. Richard Beeson
Mr. and Mrs. Brian Belisle
Mr. and Mrs. John Comfort
Mr. and Mrs. Sam Pitera
Mr. and Mrs. Robert Samec
Ms. Sandy Shomion

Gilbert Brown

Mrs. Marjorie Edwards

Richard F. "Dick" Cairl

Mr. Wallace B. Olson

John Casey

Mr. and Mrs. Daniel J. Casey

Art Christensen

Mrs. Nancy Godfrey

Dennis Christophersen

Ms. Diane J. Lindstrom

Beverly M. Cohen

Karen and Bruce Gershman

Richard (Dick) Cork

Mr. and Mrs. Robert L. Mitchell
Mr. and Mrs. Gerald L. Nelson

Jean Deering

Ms. Norma L. Larson
Mr. Robert V. Shannon

Dr. William Derechin

Mr. and Mrs. Carl Birnberg

Joy DiMucci

United E.D. Leadership Team

Dr. Jesse Edwards

Mr. and Mrs. William A. Sullivan, III

Diane Farrell

Ms. Janet A. Cierzan

Dr. William R. Glenny, Jr.

Hospital Pathology Assoc., PA
Mr. and Mrs. Gerald R. Mulcahy

Josephine Glewwe

Mr. David Coates

Mayme (Mae) D. Gruening

Ms. Ellen Gruening
Ms. Lenora A. Gruening
Ms. Maurine E. Gruening
Ms. Diane L. Mahler
Mr. and Mrs. Gerald G. Nordin

Al Harmon

Mr. Paul Rifkin

Dr. Dan Hill

Mrs. Marjorie Edwards & Family

Dominic David Holm

Mr. and Mrs. James R. Kandels

Katherine Horvath

Barry and Jan Godes

Elsie L. Johnson

Ms. Stephanie Goodman

Robert F. Johnson

Mrs. Marion R. Johnson

James T. Kane

Mrs. Jean C. Kane

John Kassekert

Mr. and Mrs. John Squires

Raymond Kenow

Ms. Rebecca Kenow

Anna Kisch

Ms. JoAnne M. Kisch

Rande Laiderman

Karen and Bruce Gershman
Mr. and Mrs. Steven Krause

Marion Levine

Karen and Bruce Gershman

James Liberko

Mrs. Betty Adam

Bill Lidgerding

Mr. David E. Feinberg

Pat Lowenberg

Mr. Paul Rifkin

Babe Marvy

Mr. and Mrs. Barry Godes

John J. McCarron

Mr. and Mrs. David W. York



Birdie Molde

Mr. and Mrs. Eric Gydesen

Judy Naegeli

Mr. and Mrs. Gerald R. Mulcahy

Madeline Muller Peterson

Mr. and Mrs. Dennis Peterson

Lawrence (Larry) G. Reuter

Ms. Michele Boston
Ms. Lisa Vandevoorde

Lois Rose

Karen and Bruce Gershman

Aiden Robert Roth

Mrs. Jolene A. Roth

Ethie Rutzick

Mr. and Mrs. Shale H. Gollop
Mr. and Mrs. Steven I. Krause

Loretta Schaefer

Mr. and Mrs. Joseph Schaaaf

Donald Serres

Mrs. Mary R. McAlpine

Dr. Roy Shorter

Mrs. Marjorie Edwards & Family



Connie Singer
Karen and Bruce Gershman

Harold Skunes
Mr. and Mrs. Gerald L. Nelson

Margaret Tharaldson
Ms. Janet A. Cierzan

LaVaune Thiemert
Ms. Janet L. Wilson

Norbert E. Venne
Mrs. Anne Venne

Vincent M. Venne
Mrs. Anne Venne

Joseph J. Westwater
Mr. and Mrs. Charles Avoles

Sharon K. Willbrandt
Mr. and Mrs. James Studenski

Walter P. Youngblood
Mrs. Barbara Youngblood

Sharon Zoellner

In honor of anniversary

Mr. and Mrs. Stuart Applebaum
Karen and Bruce Gershman

Mr. and Mrs. Ronald Harris
Karen and Bruce Gershman

In honor of care

Dr. Mark Palmer
Mrs. Debra C. Waddell

Dr. Domingo Perez
Mrs. Debra C. Waddell

Dr. Omar Sanan
Mrs. Debra C. Waddell

In honor of granddaughters

Steve and Wendy Rubin
Mr. and Mrs. Marc E. Rosenberg

In honor of marriage

Susan and Mike Mercer
Ms. Carol Loforte

In honor of Olivia's family

Tony Mondry
Joan and Wayne Wittman

David and Cheryl Wittman Family
Joan and Wayne Wittman

Grant Wittman
Joan and Wayne Wittman

Luke Wittman
Joan and Wayne Wittman

In honor of

Terri Dresen
Mrs. Mary Pat McGinnis

John Nasseff and Helene Houle
Steven, Nick & Tawnee Nasseff

Gerry Hughes
Mr. and Mrs. Steve A. Carples

Jerone and Penny Kennedy
Mr. and Mrs. Walter Bailey

In celebration of 100th birthday

Mrs. Berniece Swanson
Mr. David E. Feinberg

In celebration of 90th birthday

Dr. Milton Hurwitz
Mr. Larry Bentson

In celebration of birthday

Karen and Seth Chlebeck
Mr. and Mrs. Michael J. Boland

Marshall R. Hatfield
Mrs. Elizabeth Hatfield

Peter J. King
Minnesota Wire

Sue Leonard
Mrs. Marjorie Edwards

Leo Mogol
Barry and Jan Godes

John Nasseff
Minnesota Wire

David Schwartzman
Karen and Bruce Gershman

Get well wishes

Lisa Berman
Mr. and Mrs. Michael B. Malinoff

Joy Munro
Barry and Jan Godes

Wendy Rubin
Karen and Bruce Gershman

Jim Scarpetta
Paul "Butch" Rifkin

Thank you

Kamie Lomax
Mr. and Mrs. John Santos

To make a gift, fill out the enclosed honoring envelope and return with your donation to the United Hospital Foundation. Thank you.

United Hospital Foundation Funds

BHS FUND

This fund helps support the Geriatric Psychiatry unit, in addition to the other behavioral health service units.

BIRTH CENTER

This fund provides resources for programs and equipment for one of the state's busiest birth centers.

CAL CALMENSON PULMONARY & CARDIAC EDUCATION FUND

The fund provides for pulmonary and cardiac education for patients and staff at United Hospital.

JESSE E. EDWARDS ENDOWMENT FUND

This cataloged collection of nearly 21,000 human hearts and 85,000 photographic slides provides a unique learning and working opportunity for local, national and international physicians, which benefits every person with the potential for heart disease. The endowment fund keeps the registry here at United.

HEART UNITED FUND

Cardiac specialty hospital located in United Hospital, centralizing all cardiac services in one location.

ELAINE S. AND ROBERT E. LARSON ENDOWMENT

This fund supports the designation of a medical director position of the Stroke Intervention Center within the Nasseff Neuroscience

Institute which already has the components for a stroke center of excellence in place which includes experienced staff, interventional radiological treatments, rehabilitation services, screenings, prevention and risk-reduction programs.

LIPSCHULTZ GUEST APARTMENTS ENDOWMENT FUND

The apartments offer a place for families to stay when a loved one is hospitalized.

This fund helps subsidize guests who can't afford to pay for the service.

MEDICAL EDUCATION AND RESEARCH ENDOWMENT FUND

This resource is funded entirely by physicians and provides grants for clinical research, educational opportunities and the purchase of ancillary equipment.

MEDICINE FUND

This fund helps support the Medicine Service units and is used for equipment, patient resources and staff education.

MILTON M. HURWITZ EXERCARE FITNESS CENTER FUND

The Milton M. Hurwitz ExerCare Fitness Center provides medically safe and effective exercise and education programs to patients, their families and the community.

NEUROSCIENCE UNITED FUND

The John Nasseff Neuroscience Institute offers comprehensive services, including a multidisciplinary team for acute and long-term care, and serves as a research and education center to patients with neurological disorders.

PARTNERS FOR VIOLENCE PREVENTION

Partners for Violence Prevention works in the West 7th neighborhood of Saint Paul to prevent violence, reduce the incidence and impact of violence and improve the community and health care provider's response to violence.

PETER J. KING EMERGENCY CARE CENTER AT UNITED HOSPITAL FUND

United's Emergency Department, one of the busiest in the Twin Cities, is being expanded to continue to meet the needs of our community as we respond to life-threatening injuries and illness, as well as the possibilities of terrorist threats, large-scale natural disasters and worldwide epidemics.

PETER J. KING FAMILY HEALTH CENTER FUND

Starting with support serving patients of all ages and focus on providing increased access to those without adequate insurance or the uninsured.

ADDITIONAL FUNDS

Jim Adamski Complementary Therapy Fund

Breastfeeding Resource Center
Cancer Care and Research Fund

Cardiology Research Fund

Cardiovascular Health Improvement Fund

Center for Caring

Chapel/Pastoral Care/
Spiritual Care Fund

Claussen Scholarship
Endowment Fund

Community Partnership Fund

Diabetes Fund

Dr. C. Richard Guiton
Ethics Fund

Dr. Karon Pulmonary
Disease Fund

East Metro Disease Initiative
Employee Fund (EFAC)

Equipment Fund

Faye Ann Johnson Memorial
Education Fund

Free Care Endowment Fund

G. Kamman Tumor
Conference Fund

General Fund

Heart/Lung Endowment Fund

John & Delores Holl
Endowment Fund

Lawson Family Donor
Advised Fund

Newman Breast Cancer Fund

Nursing Education
Endowment Fund

Olivia Birth Center Fund

Oncology Endowment Fund

Pain Center Fund

Ragon Cardiac Fund

Rifkin Cardiac Fund

Rinkey Cardiovascular
Endowment Fund

Sam Singer Memorial Fund

Sharon K. Willbrandt
Memorial Fund

Volunteer Fund

To make a donation to any United Hospital Fund, please call the United Hospital Foundation at 651-241-8022 or visit us online to learn more about planned giving at www.unitedhospital/unitedfoundation.

The Heritage Society

The Heritage Society is our way of acknowledging donors who make the Foundation part of their estate plan or who provide perpetual support of our hospital through the creation of an endowment fund. These generous individuals are shapers of the future, making their mark with gifts that will benefit generations to come. An estate gift is so much more than a donation. It is a charitable act that provides a steady stream of support that allows the Foundation to respond to changing needs – forever.

To become a member of the Heritage Society, all you need to do is inform us of the provision you have made for the Foundation in your will or trust. The amount can vary and does not have to be disclosed. You may remain anonymous if you wish.

For more information, please contact Richard Olson, Director of Gift Planning, by phone at 612-262-6063, or via e-mail at Richard.Olson@Allina.com. Confidential consultation on charitable giving with Foundation staff or other experts is available.

We recognize and thank the following members of the Heritage Society:

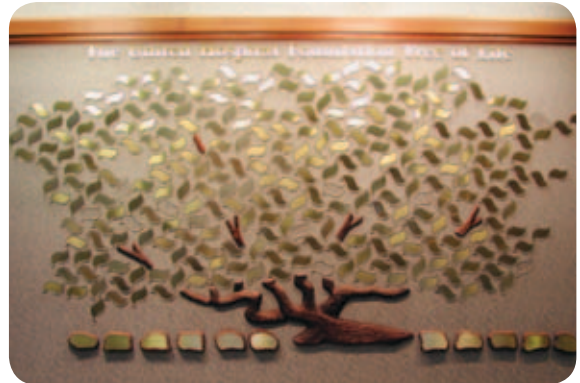
The United Hospital Foundation has been addressing the charitable needs of the Saint Paul community for many years. We have become a trusted partner for generations of families, and the Heritage Society honors many generous donors.

If your name is not listed here and you have included the United Hospital Foundation in your estate plans, please notify the Foundation, allowing us to recognize the generosity of your personal commitment.

Duke Adamski	Dan Foley, M.D.	Evelyn B. Johnson	Dean K. Murray
Darcy Andahl	Milton Frogner	David B. and Julie A. Jones	John Nasseff
Gudfinna Angevine	Virda Frogner	Ione N. Kadden	Peter L. Navtzeny
Charles and Marjorie Avoles	Elsie Geiss	Elsie J. Lane	Scott Nelson and Roxanne Hart
Barbara and Dan Balik	Steven Gryzan, M.D. and Thomas M. Reynen	Elaine S. and Robert E. Larson	Winnifred Netherly
Helen L. Bauer	Richard J. Haag	Norma L. Larson	Sandy Neuman
Cynthia Bean	Jerome M. and Marice L. Halper Family Foundation	The Lawson Family	Mary Ann and Ed Newman
Maxine A. Becker	M. Lenore Hannon	Roger R. Lenzmeier	Frederick M. Owens, Jr., M.D. and Lucy T. Owens
Eleanor Beikler	Douglas H. and Marie E. Hanson	N. Logan Leven, M.D.	H. Johanne Platzer
Larry and Nancy Bentson	Beda Harper	Richard Leven	Shirley J. Pond
John and Andrea Bien	Clara Louis Harris	Bill and Sybil Lipschultz	George Power, Jr.
Rachel Hill Boeckmann	Nancy Ottis Harris	Mrs. Samuel (Ruth) Lipschultz	Florine J. Prusak
Paul J. Bosman	John G. and Alice L. Harrison	Jean and Gunnar Ljungkull	Rosella E. Qualey
Elinor Brodie	Marshall and Elizabeth Hatfield	Dr. Thomas and Katie Love	Russell and Dorothy Ragon
Edwina and Raymond Burrows	Marjorie Hathaway	Harvey Lubov	Paul and Irene Rifkin
David W. Byrd	Monica and Harold Heitgen	Gertrude Maiden	Karen A. Ringheim
Mary D. Cannon	Rebecca F. Hensel	Wyllene Pearson Marks	Jack Ritt
William J. Carthaus	Phillip W. Herzog	William H. Mason, III	Clayton L. Robinson
Robert H. Chandler	George S. Hill	Kay Mathes	Robert R. Robinson
Dorothy Chappell	Louis Fors Hill	Theresa T. McCarthy	Mr. and Mrs. Dick Roessler
Bruce F. Church	Stan and Doris Hill	Dr. and Mrs. Robert Merrick	John T. Rogers, M.D.
Clara Claussen	Edith B. Hodgson	Peter Michalowski	Norman Rose
Frieda Claussen	John and Dolores Holl	David and Patricia Miller	Lillian M. Rumble
Stephanie S. Cook	Dr. Ken and Linda Holmen	Dr. Zondal and Esther Miller	Jerry Sansby
Pat and Jim Cooksey	Louise D. & Rosemary L. Huberty	Mark and Joan Mishek	James Scarpetta, Jr.
Lisa M. Damon	Rose Hutterer	Lucille Moeller	Craig and Leah Schmalz
Patrick and Marie Dresch	Mary Lou Jacobson	Joan Muhlenkord	Dolores M. Schram
Arthur G. Driscoll	Charlotte Janssen	LeVonne Mulrooney	William C. Schram, Jr.
Cindy and Bill Early		Lorraine C. Murphy	Christine and Michael Seitz
Mina Fergestad			
James Flink, M.D. and Diane Uecker-Flink, R.N.			

The Heritage Society continued

Drs. Richard and Barbara Shank	Joan C. Thompson	Diane Weinfurter
Ronald A. and Norma E. Signorelli	Ruemah H. Thompson	Patricia H. Whitacre
Charles Signs	Joyce Johanne Tobiason	Leonard Wilkening
Freda Silver	Robert and Roberta Topness	Norb and Karen Winter
Florence and Donald Stanton	Mary L. Tyler	Ten of our donors would like to remain anonymous
Elvera Stauffacher	Mr. and Mrs. Ralph Tyler	
Phil Sutherland	Paul and Carolyn Verret	
James F. Sylvester	Tim L. Vesperman	
	Carol J. Wagner	



The Heritage Society's "Tree of Life"

United Hospital Foundation Staff



Back row
Jo Marcotte
Department Secretary

Cindy Early
Special Events Officer

Phil Sutherland
Development Officer

Janet Olariu-Tau
Development Associate

Front row
Duke Adamski
President

David Byrd
Director of Development

The United Hospital Foundation exists to enhance the health of United Hospital patients and the wellness of the community we serve.

333 North Smith Avenue
Saint Paul, MN 55102
www.unitedhospital.com/
unitedfoundation



Nonprofit
Organization
U.S. Postage
PAID
St. Paul, MN
Permit 3121

United Hospital Foundation Board of Directors

Duke Adamski,** President,
United Hospital Foundation

Sid Applebaum,* Big Top Liquors

Alan Bank, MD, St. Paul Heart Clinic

John Bien, Treasurer, Foundation Board
United Hospital

Bob Chandler, Chandler & Brown, Ltd.

Vic Corbett, MD,** United Medical
Specialties

Merry DeCourcy, Community Member

Song Lo Fawcett, Fawcett Law

Mary Gag, RN, United Hospital

Larry Gamst, Divine, Scherzer &
Brody, Ltd.

John Harrington, Saint Paul Chief of Police

David Herr, Maslon Edelman
Borman & Brand, LLP

Louis Fors Hill,* Rockwood Capital
Management, Inc.

Helene Houle, Community Member

Gerry Hughes, Healthland

Milton Hurwitz, MD,* Community
Member

Douglas Ketcham, MD, St. Paul Radiology

Russell King, King Capital Corporation

Anders Knutzen, MD,** Vice Chief of
Staff, United Hospital; St. Paul Radiology

James Kowalski, Chair, Foundation Board
Kowalski Companies

Norma L. Larson,* Community Member

Patrick Mazorol, Securian Trust Company

Joseph Micallef,* Community Member

Peter Michalowski, Goodrich

Daniel Mott, Fredrikson & Byron

Jack Ritt, Vice Chair, Foundation Board
North Star Bank

Peter Robb, Mairs & Power

Nancy L. Rosenberg, Big Top Liquors

Wendy Rubin, Wendy Rubin Ltd.

Kris Taylor, Ecolab, Inc.

Joan Thompson, Past Chair, Foundation
Board; Minnesota Wire

Paul Verret, Secretary, Foundation Board
Community Member

Jay Westwater, MD, JD,** Chief of Staff,
United Hospital

Len Wilkening,* Community Member

Stan Williams, PhD, University of
Minnesota

* Emeritus

** Ex-Officio