

ABBOTT NORTHWESTERN'S NEUROSCIENCE INSTITUTE

Epilepsy program by the numbers



990
total patients
cared for in 2017



2 advanced
practice providers

Advanced
surgical options
available



1 psychologist



24 hour intensive
care and
emergency
coverage



12
epilepsy
neurologists

Level 4

Accredited
epilepsy center



12 beds in
neuroscience
critical care unit

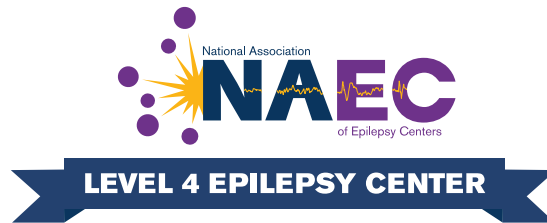


46
beds in
neuroscience unit

Award-winning epilepsy care



Ranked #1 hospital in the Twin Cities and #2 in Minnesota for Neurology & Neurosurgery



Accredited level 4 epilepsy center to provide the highest level of complex epilepsy care



Designated a Magnet Hospital for quality patient care and nursing excellence

- Epilepsy care provided in partnership with Minnesota Epilepsy Group and Noran Neurological Clinic
- Leading research in epilepsy care
- Extensive inpatient education and support
- Extensive post-discharge support