

CLIMATE ACTION PLAN

Path to Net Zero Emissions by 2050

2023



MESSAGE FROM OUR PRESIDENT AND CEO



As one of the region's largest health care providers, taking care of our environment is critical to ensure good health for our patients, our employees and our community.

Allina Health's sustainability program is one important way that we support the flourishing of the people we serve by minimizing the impact of our physical footprint. Our pledge to join the Health Care Climate Challenge and set the ambitious goals of 50% reduction in greenhouse gas emissions by 2030 and net zero emissions by 2050 strengthens our commitment to protect our communities.

At Allina Health, environmental sustainability refers to our overall approach and to a collection of initiatives occurring across the system and at individual business units. We have committed to Leadership in Energy and Environmental Design (LEED) certification for major new construction projects. At the site level, we have made strong progress in greening operating rooms, reducing waste and implementing energy efficiency measures.

Environmental sustainability is core to health care and a priority for our workforce. Our employee efforts have been recognized by Practice Greenhealth, with multiple sites receiving Environmental Excellence Awards. I am honored to lead an organization committed to reducing our impact on the planet so that we can better care for our patients, employees and community long into the future.

A handwritten signature in black ink that reads "Lisa Shannon".

Lisa Shannon, president and chief executive officer
she / her / hers



Executive Summary

In alignment with the World Health Organization¹ and over 200 medical journals², we recognize climate change is one of the greatest public health threats of the 21st century. The health care sector is a major economic and moral force around the globe, and we have the potential to play a leadership role in addressing climate change in our communities, throughout our country and around the world.

In April 2022 Allina Health committed support for climate action by signing the [Health Care Climate Challenge](#). As signatories, we solidify our commitment to patients and the future of the communities we serve by pledging to reduce our greenhouse gas emissions, becoming more resilient to the impacts of climate change and engaging with staff and our community to promote climate education and encourage action. In alignment with these three focus areas, our Climate Action Plan outlines the steps we will take to fulfill our pledge.



Greenhouse gas reduction

We pledge to reduce our carbon footprint, and to measure and report on our progress. We have chosen a baseline year of 2019 and adopted ambitious guidelines:

- **Goals** – Reduce our greenhouse gas emissions 50% by 2030 and reach net zero emissions by 2050.
- **Scopes** – Include all scope 1, 2 and 3 emissions sources.
- **Initiatives** – Reduce emissions-producing activities, increase energy efficiency and renewable energy, and as a last resort purchase offsets.



Resilience

We pledge to prepare for the impacts of climate change by becoming more resilient to increasing incidents of extreme weather and the shifting patterns of disease. Rising temperatures can create many conditions that affect how disease is transmitted. Floods and severe rain increase the spread of bacteria and mold, intensifying respiratory diseases and weakening immune systems. Global warming leads to more frequent and widespread vector-borne illnesses such as Lyme disease from ticks and West Nile Virus from mosquitoes.

- **Initiatives** – Work with relevant internal partners to incorporate climate resilience into policies and procedures currently in place.



Engagement

We pledge to educate our staff and communities on the challenges and solutions related to climate and the connection to the health of our patients and communities. In addition, we pledge to encourage public policy, economic development and investment strategies that support our climate commitments.

- **Initiatives** – Work within established communication channels and partner with relevant internal staff to identify initiatives that align with Allina Health's education, policy, economic development and investment efforts. Continue to foster and expand partnerships with external stakeholders.

This plan sets Allina Health on a leadership path for climate action in the health care sector. The strategic framework provides a roadmap to develop and implement topic-specific targets and initiatives, as well as the means to measure our progress.

¹ "Climate change and health," World Health Organization, dated October 30, 2021, [Climate change and health \(who.int\)](#).

² "Climate Change Is The Greatest Threat To Public Health," National Public Radio, dated September 7, 2021, [Medical Journals Say Climate, Not COVID-19, Is Top Public Health Threat: NPR](#)

Allina Health has a 140-year history of caring for the communities we serve



For us, climate care sits alongside patient care, and is one important way that we support the flourishing of the people we serve. This is exemplified by our Whole Person Care model which recognizes that all factors impacting health are connected—mind, body, spirit and community.

There is little doubt that climate change is one of the greatest public health threats of the 21st century and taking care of our community is one of our greatest opportunities.

Because the health care sector is a major economic and moral force around the globe, we have the potential to play a leadership role in addressing climate change in our communities, throughout our country and around the world.

Our commitment to put our patients first and to drive collaborative efforts to help solve our community's environmental health challenges by reducing our emissions and becoming more resilient enables our hospitals and health care facilities to contribute to both health and climate solutions.

According to the 2018 Special Report on Global Warming³ by the Intergovernmental Panel on Climate Change (IPCC), "limiting global warming to 1.5°C would reduce challenging impacts on ecosystems, human health and well-being." To meet that target, "global net human-caused emissions of carbon dioxide (CO₂) would need to fall by about 45% by 2030, reaching 'net zero' around 2050."

Government bodies and organizations worldwide have rallied around these recommendations and calls for pledges to reduce emissions 50% by 2030 and to reach net zero by 2050 are now common. As climate change continues to undermine health in the United States and around the globe⁴ calls to action have increased in the health care sector.

To signify our support for climate action, Allina Health signed onto the [Health Care Climate Challenge](#), a global commitment to implement sustainability actions and changes within health care operations to decrease our environmental footprint and reduce the collective impact of health systems.

The Health Care Climate Challenge has over 300 participants, representing the interests of more than 28,000 hospitals and health care centers in 43 countries.

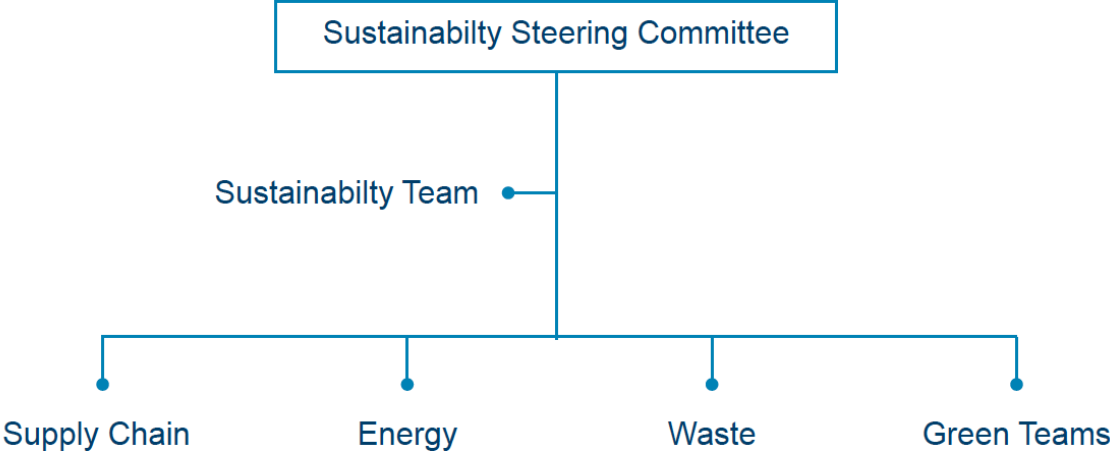
The Health Care Climate Challenge sets the framework for our Allina Health Climate Action Plan:

- 1 GREENHOUSE GAS REDUCTION** – Reducing our carbon footprint and fostering low-carbon health care.
- 2 RESILIENCE** – Preparing for the impacts of extreme weather and the shifting burden of disease.
- 3 ENGAGEMENT** – Educating staff and the public while promoting policies to protect public health from climate change.

³ "Summary for Policymakers of IPCC Special Report on Global Warming," Intergovernmental Panel on Climate Change (IPCC), dated October 8, 2018, [Summary for Policymakers of IPCC Special Report on Global Warming of 1.5°C approved by governments — IPCC](#)

⁴ "The 2022 Global Report of the Lancet Countdown," Lancet Countdown: Tracking Progress on Health and Climate Change, dated July 12, 2022, [2022 Report - Lancet Countdown](#)

Allina Health created a comprehensive sustainability program in 2020 which now consists of three staff, as well as an intern. It sits under the operations business unit and has strong support up to and including the Senior Vice President of Operations. In addition, staff in supply chain are dedicated to diversity and sustainability. An Environmental Sustainability Steering Committee was established in 2021 to help guide and support the efforts of the program. The committee consists of leaders from across the system, including representatives from: Supply Chain, Community Benefit and Engagement, Facilities and Diversity, Equity, Inclusion & Belonging.



About Allina Health

Allina Health is dedicated to the prevention and treatment of illness and enhancing the greater health of individuals, families and communities throughout Minnesota and western Wisconsin. A not-for-profit health care system, Allina Health cares for patients from beginning to end-of-life through its 90+ clinics, 12 hospital campuses, 15 retail pharmacies, specialty care centers and specialty medical services that provide home care, senior transitions, hospice care, and emergency medical transportation services. Learn more at allinahealth.org.

