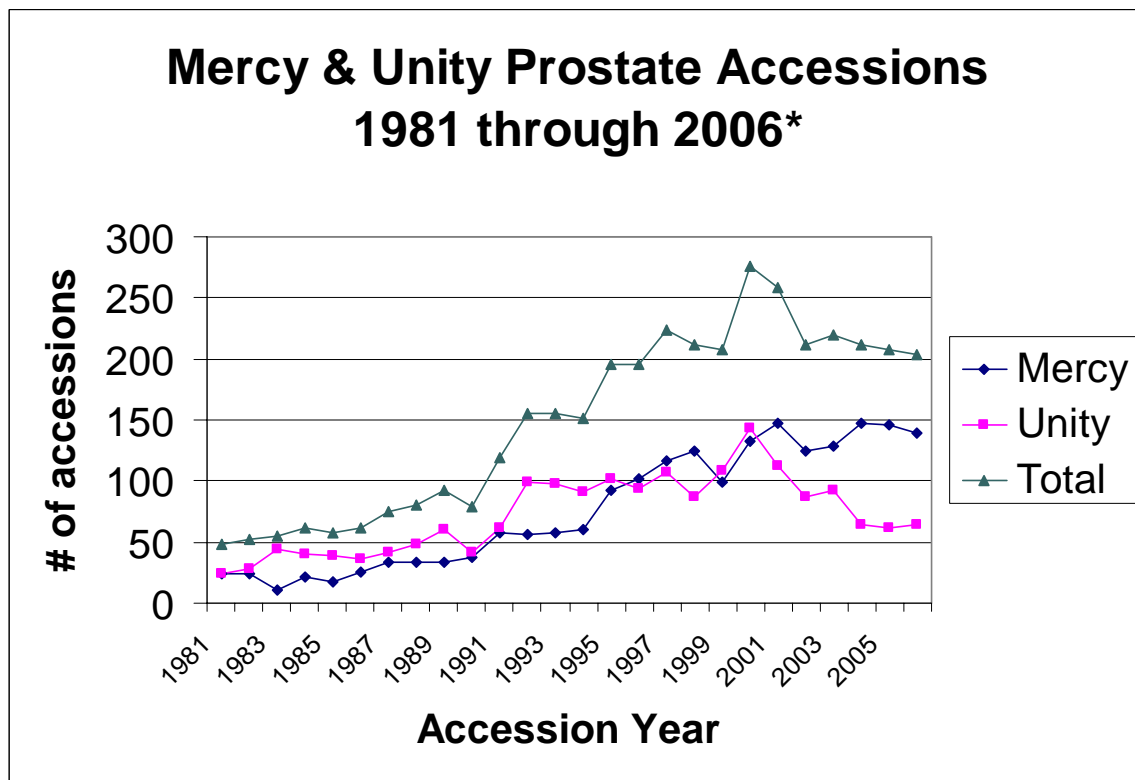


Prostate Cancer Site Analysis and Update
 By
 Stephen Mann, MD, Medical Director
 Mercy and Unity Hospitals Oncology Program
 Presented at the May 22, 2007 Cancer Committee Meeting

Prostate Cancer Volumes

Figure 1 below shows prostate cancers diagnosed and/or treated since 1981 at Mercy and Unity Hospitals. Since 2000, our total accessions have dropped by 26%. Nationally, total prostate cancer diagnoses have increased by 11% since 2001.

Figure 1



The decline in our prostate cancer cases is fully accounted for by the drop at Unity Hospital. There has been a parallel decline in Stage 2 diagnoses and radical prostatectomies at Unity (See Figures 2A and 2B).

Figure 2A

STAGE 2 PROSTATE CANCER VOLUME
2000 TO 2006

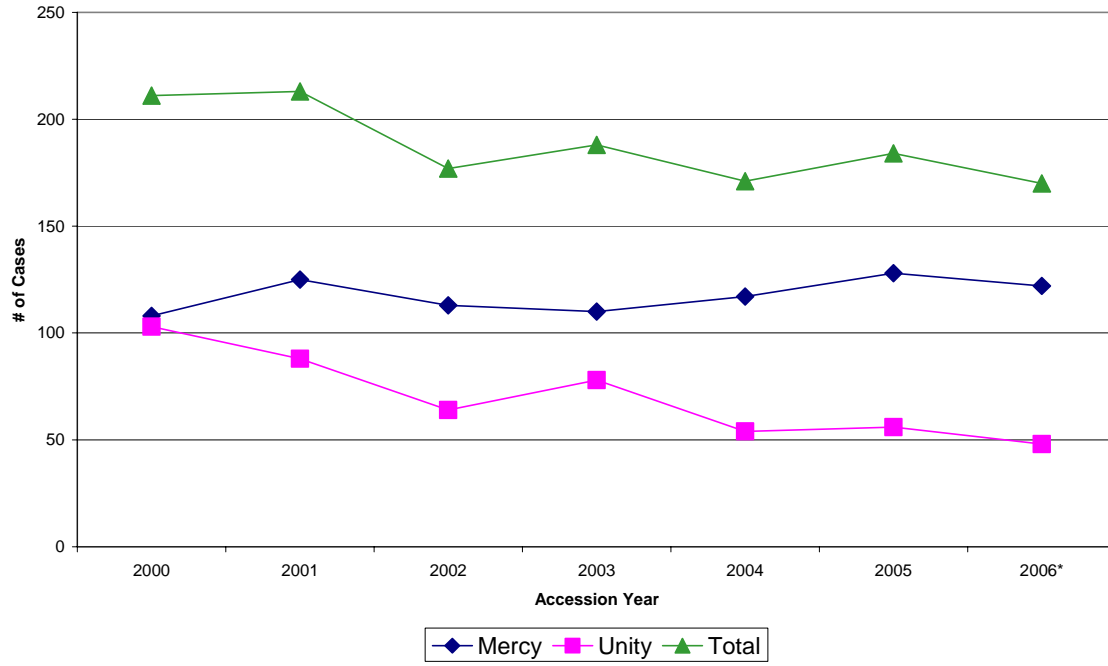
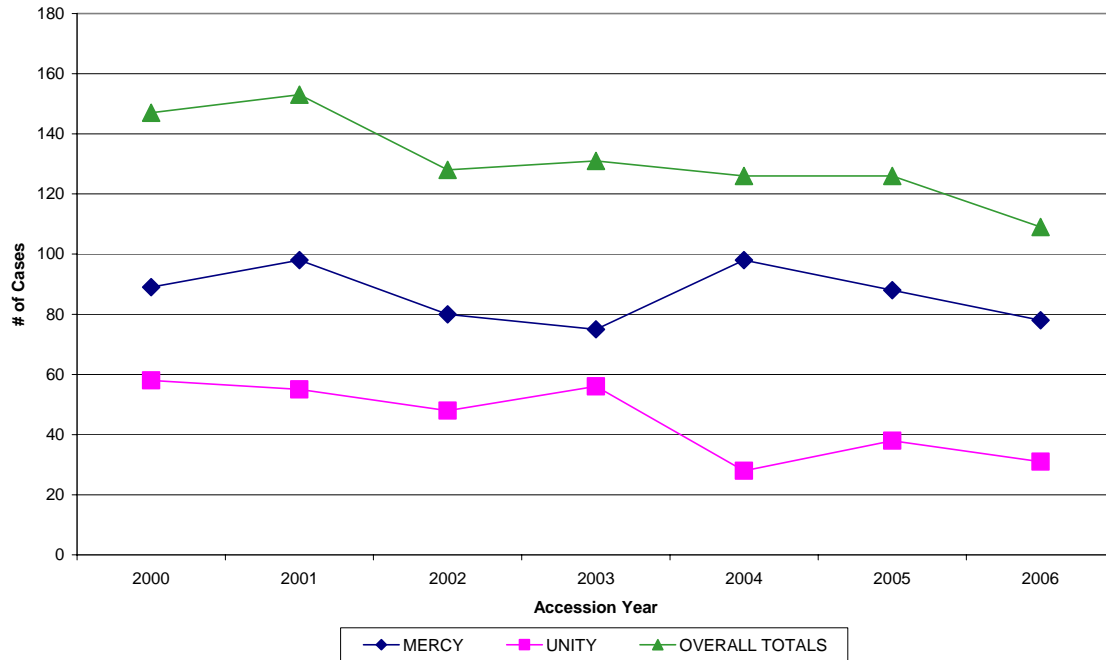


Figure 2B

Prostatectomy Volume 2000 to 2006



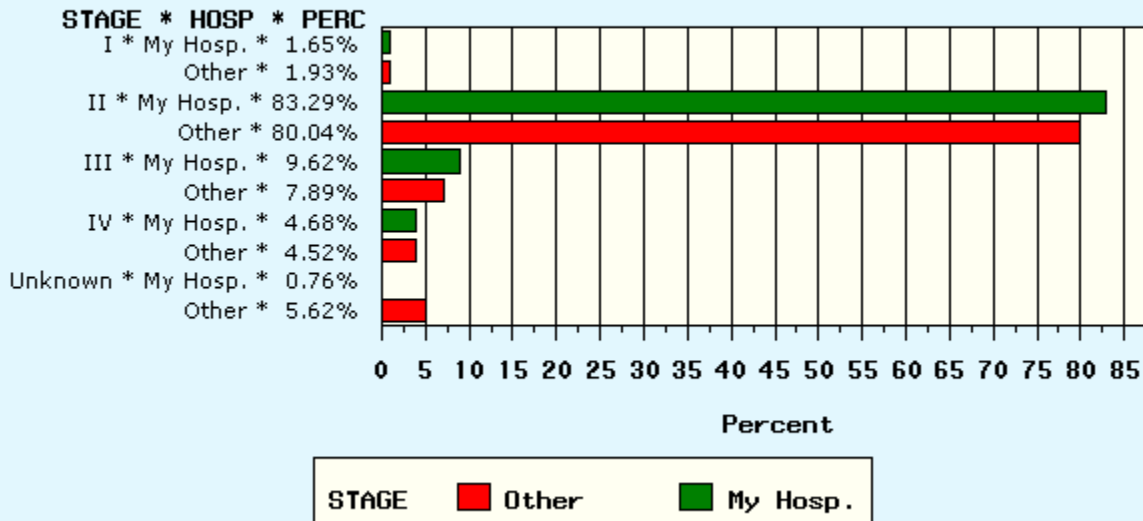
Prostate Cancer AJCC Stage at Diagnosis

Figure 3 shows a comparison of stage at diagnosis for prostate cancer at Mercy and Unity compared with national results. The stage distributions are similar in the two groups. Note the striking preponderance of Stage 2 disease. This pattern has resulted from the widespread use of PSA screening since the 1990's and the current AJCC staging rules, which limit Stage 1 cases to incidental findings in TURP specimens.

Figure 3

STAGE of Prostate Cancer Diagnosed 2000 to 2004

All Reported Cases - HOSP. TYPE: Comprehensive Community Cancer Program
 Unity Hospital, Fridley, MN vs Hospitals in All States - Data From 520 Hospitals



Source: NCDB, CoC, ACoS.

Benchmark Reports, v8.0 - April 17, 2005

STAGE of Prostate Cancer Diagnosed 2000 to 2004

All Reported Cases - HOSP. TYPE: Comprehensive Community Cancer Program
 Unity Hospital, Fridley, MN vs Hospitals in All States - Data From 520 Hospitals

STAGE	N (cases)		% (percent)	
	Sum		Sum	
	Reported by		Reported by	
	Other	My Hosp.	Other	My Hosp.
I	5,359	13	1.93	1.65
II	222,136	658	80.04	83.29
III	21,904	76	7.89	9.62
IV	12,553	37	4.52	4.68
Unknown	15,594	6	5.62	0.76
Total	277,546	790	100.00	100.00

Source: NCDB, Commission on Cancer, ACoS. Benchmark Reports, v8.0

Prostate Cancer Outcomes

Figure 4 shows 5-year survival by AJCC stage at Mercy and Unity compared with national results. For all stages, the Mercy and Unity survivals compare favorably with the national counterparts.

Two years ago, we presented data from 1995 to 1999 which showed inferior survival in our stage 4 patients compared to national outcomes. In response, we recommended that all stage 4 patients consult with medical oncology. In general, newly diagnosed Stage 4 patients should be offered anti-androgen therapy.

Figure 4

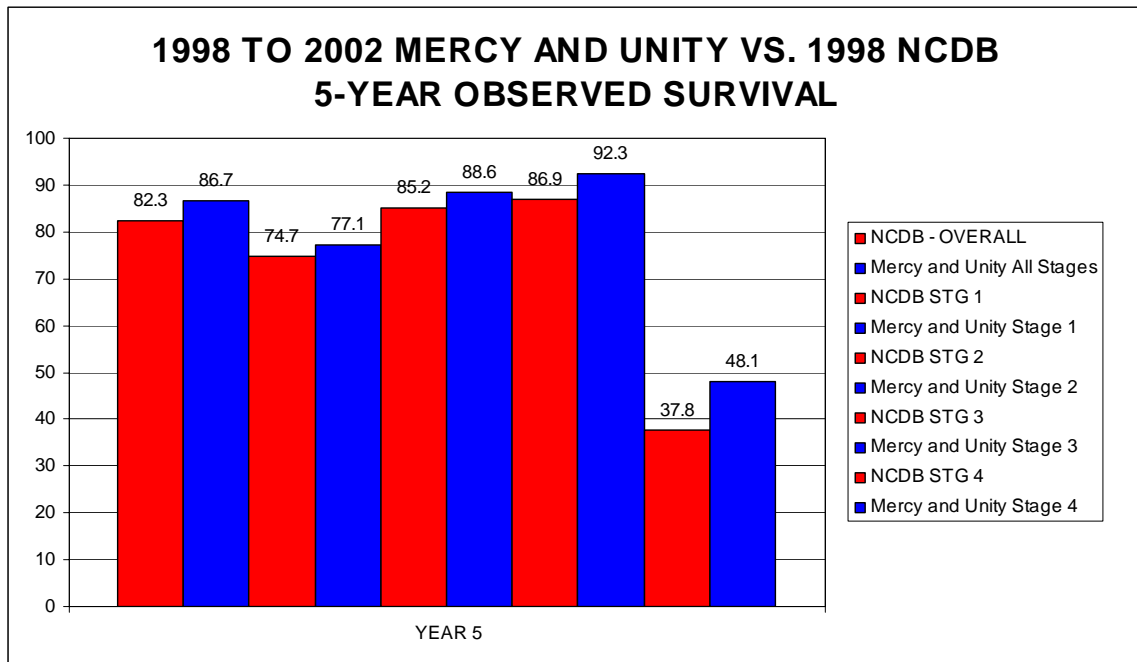
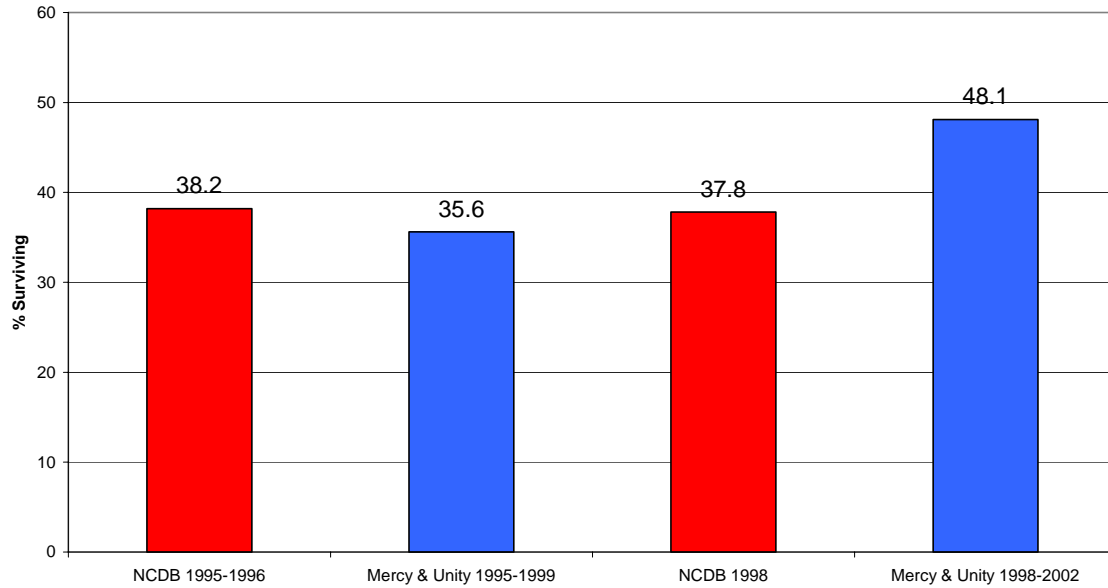


Figure 5 shows the improvement in 5-year survival of Stage 4 patients at Mercy and Unity. As mentioned above, 5-year survivals of our Stage 4 patients currently exceed the national average.

Figure 5

PROSTATE CANCER STAGE 4
5-YEAR OBSERVED SURVIVAL
(Documentation of improvement)



Summary and Recommendations

- Survival outcomes for Mercy and Unity prostate cancer patients are superior to national averages at all stages of disease at diagnosis.
- Our volumes have dropped significantly at Unity hospital since 2000, primarily because other centers with advanced operative technology are being chosen for prostatectomy. These centers offer robotic surgery, a minimally invasive procedure, which results in shorter hospital stays and decreased morbidity.