



AT A GLANCE

Allina Hospitals & Clinics believes people's most valuable asset is their good health. Our family of hospitals, clinics and other care services are dedicated to meeting the lifelong health care needs of communities throughout Minnesota and western Wisconsin. Allina offers a full range of primary and specialty care services including technically advanced inpatient and outpatient care, 24-hour emergency care, medical transportation, pharmacy, and home and community services.

Our nearly 24,000 employees, 5,000 associated and employed physicians and 2,500 volunteers share a common mission – to deliver exceptional health care and support services to the people in our communities – putting the patient first in everything we do. Allina provides a complete continuum of care – from disease prevention to innovative diagnostic and treatment services for complex medical conditions.

One patient. One record. Allina utilizes one of the most comprehensive electronic medical record (EMR) systems in the nation. Allina is transforming health care with the EMR by providing patients with seamless, coordinated and more informed care and improved patient safety. **MyChart**, an Internet tool, enables patients to securely access portions of their medical records, get lab results, schedule appointments online and more. Allina is the first Minnesota health care organization to earn the Davies Award, the industry's preeminent award for health information technology.

Allina is a not-for-profit organization that cares about improving the health of the communities we serve not only in medical settings, but wherever people live, learn and work. **Heart Safe Communities**, which places automated external defibrillators in public places to prevent death from sudden cardiac arrest, and our childhood obesity prevention initiative are just two examples of Allina's work to benefit its communities.

ALLINA HOSPITALS & CLINICS SYSTEM OFFICE

2925 Chicago Avenue
Minneapolis, Minnesota 55407
612-262-5000

Mailing Address:
P.O. Box 43,
Minneapolis, MN
55440-0043

Web address: allina.com

Our Mission

We serve our communities by providing exceptional care, as we prevent illness, restore health and provide comfort to all who entrust us with their care.



Allina Medical Clinic

Allina Medical Clinic is a multi-specialty medical group providing primary and specialty care to people in 32 communities in Minnesota and western Wisconsin. More than 600 health care practitioners focus on the complete health care needs of their patients, helping them to identify health risks and manage chronic illness. The American Diabetes Association has recognized Allina Medical Clinic for its diabetes patient education program.

Aspen Medical Group

Aspen Medical Group joined Allina in 2008 and has more than 30 years of experience serving patients across the Twin Cities in 10 different locations. More than 150 experienced, board certified providers offer primary care and more than 20 areas of specialty care for patients ranging from infants to seniors. Aspen Medical Group is committed to utilizing best practice guidelines and continued research to achieve the best clinical outcomes for its patients.

Quello Clinic

Quello Clinic, which joined Allina in mid-2008, has provided award winning family medicine to south suburban communities for more than 60 years. Each family practice provider focuses on the patient as a whole person and on how the patient's own health is interrelated with the health of family members. Quello has 33 providers with clinic locations in Burnsville, Chanhassen, Edina, Lakeville and Savage; and it also offers urgent care at its Burnsville, Edina and Lakeville locations.

Abbott Northwestern Hospital

Located in south Minneapolis, Abbott Northwestern Hospital is the Twin Cities' largest not-for-profit hospital. Abbott Northwestern is known around the region and across the United States for its centers of excellence: cancer care through the Virginia Piper Cancer Institute™; cardiovascular services in partnership with the Minneapolis Heart Institute®; the Spine Institute; Neuroscience Institute; Orthopaedic Institute; perinatology, obstetrics and gynecology through WomenCare® and physical rehabilitation through Sister Kenny® Rehabilitation Institute.

Buffalo Hospital

Located in the western metropolitan community of Buffalo, Buffalo Hospital is recognized as one of the nation's 100 Top Hospitals® according to Thomson Reuters. Buffalo Hospital provides high quality, personal care in private rooms and services are continuously being added and enhanced. The hospital provides many specialty services including the Birth Center, Cardiac Center, Emergency Services, Sleep Center, Phillips Eye Institute and Sister Kenny Rehabilitation Institute.

Cambridge Medical Center

Located in the community of Cambridge, Cambridge Medical Center is a regional health care facility providing comprehensive health care services to residents of Isanti County. The medical center is comprised of a large multi-specialty clinic and a hospital on one large campus. Dedicated to meeting the needs of its patients, Cambridge Medical Center provides an atmosphere that promotes healing and comfort.

Patient Care Facilities

| | |
|----|-----------------------------|
| 11 | Hospitals |
| 42 | Allina Medical Clinic sites |
| 12 | Aspen Medical Group sites |
| 5 | Quello Clinic sites |
| 23 | Hospital-based clinics |
| 15 | Community pharmacy sites |
| 3 | Ambulatory care centers |

2011 Key Figures

| | |
|-----------|--|
| 24,161 | Employees |
| 1,797 | Staffed beds |
| 105,057 | Inpatient hospital admissions |
| 1,233,348 | Hospital outpatient admissions |
| 35,373 | Inpatient surgical procedures |
| 57,175 | Outpatient surgical procedures |
| 285,421 | Emergency care visits |
| 14,089 | Births |
| 3,856,278 | Total clinic visits [AMC & hospital-based] |
| 109,411 | Home care visits |
| 103,879 | Hospice visits |
| 858,269 | Pharmacy prescriptions filled |
| 9,211,330 | Lab tests performed |
| 188,252 | Oxygen/medical equipment orders |
| 54,610 | Ambulance transports |

2011 Annual Net Operating Revenue

\$3.2 billion

Mercy Hospital

Located in Coon Rapids, Mercy Hospital offers nationally recognized clinical excellence and compassionate health care services to north metro communities. Among the services providing cutting-edge care are Heart & Vascular Center, Women's Heart Center, Cancer Center, Women's & Children's Services, Emergency Services, Mental Health Services and a wide range of health education and support groups. Mercy also serves the community through Elk Ridge Health, a surgery center and clinic in Elk River.

New Ulm Medical Center

Located in south central Minnesota, New Ulm Medical Center (NUMC) consists of a hospital and clinic that serves the region in and around Brown County. NUMC offers an extensive range of health care options, including family practice, internal medicine, general surgery, pediatrics, orthopedics, obstetrics and gynecology, radiology, emergency medicine, psychiatry, podiatry, mental health and substance abuse, home care and hospice. As a fully involved member of its community, NUMC continually fosters an atmosphere of well being outside its four walls through a variety of community-focused initiatives.

Allina Physician Referral and Allina Class Registration are available at 612-262-3333 (or 1-800-877-7878 outside the Twin Cities metro area). You may also find this information online at allina.com.

Owatonna Hospital

Located south of the Twin Cities metropolitan area, Owatonna Hospital provides comprehensive care to patients in and around Steele County. Owatonna Hospital has helped to make a positive difference in the lives of its patients and the community for more than 110 years. The new 38-bed replacement hospital opened in October 2009, which features international best practices in contemporary hospital design. The hospital offers a full range of inpatient, outpatient and emergency care services.

Phillips Eye Institute

Located in Minneapolis, Phillips Eye Institute is the third largest specialty eye hospital in the U.S., specializing in the diagnosis, treatment and care of eye disorders and diseases. Phillips Eye Institute draws patients from a five-state region with an extensive array of services, ranging from diagnostic tests and vision rehabilitation to laser eye treatments and specialized eye surgery.

St. Francis Regional Medical Center

Located in Shakopee, St. Francis Regional Medical Center serves the people of the Twin Cities south metro area with the unique blend of a therapeutic environment combined with the latest technology and treatment. St. Francis provides a wide array of patient care services, including The Family Birth Place, Breast Center, Cancer Center, pediatric care, rehabilitation and sports medicine, as well as a range of health education and support groups. St. Francis is jointly owned by Allina Hospitals & Clinics, Benedictine Health System and Park Nicollet Health Services.

River Falls Area Hospital

Located in western Wisconsin, River Falls Area Hospital is part of a shared medical campus that provides easy access to hospital services as well as primary care and specialty clinics, a long-term care facility and a wellness and fitness center. River Falls Area Hospital provides high quality patient focused care at their Rivers Cancer Center, Birth Center and Sleep Center. River Falls Area Hospital provides patients a full range of inpatient, outpatient and emergency services including surgical, cardiovascular and rehabilitation services.

United Hospital

Located in downtown St. Paul, United Hospital is the largest hospital in the Twin Cities east metro area. United has a reputation for excellence in patient care and state-of-the-art facilities, with innovative programs such as cardiovascular services (including Nasseff Heart Center, Women's Heart Center and Vascular Center); Nasseff Neuroscience Center; and psychiatry, women's health, surgical, rehabilitation and emergency services.

Unity Hospital

Located in Fridley, Unity Hospital provides a full range of health care services to the north metro area, including a renowned Bariatric [surgical weight loss] Center. Other services include a Cancer Center, Women's & Children's Services, Emergency Services and Mental Health Services including geriatric mental health and addiction treatment. Unity also offers a complete array of health education and support groups to patients and the community.

Allina Community Pharmacies

Allina Community Pharmacies, with 15 locations, provide fast, efficient service to patients. New, refill or transfer prescriptions may be ordered online through allina.com/pharmacy for home delivery via U.S. mail. Pharmacists can answer prescription questions in person or over the phone. Pharmacy team members have special expertise in many acute and chronic medication needs, including organ transplant, diabetes, infertility, pediatrics, oncology and management of multiple medications.

Allina Home & Community Services

Care management: Focused on continuity of care, registered nurse care managers coordinate care over time for high-risk patients with one or more complex illnesses.

Care navigation help desk: One call to 651-635-9173 or 1-800-261-0879 puts patients, families and providers in touch with a care navigator 24 hours a day, seven days a week. Care navigation registered nurses and social workers assess the callers' needs and provide information and options.

Home care, hospice, palliative care: Home care provides a wide range of professional at home services. Hospice is for anyone with a life-limiting illness whose life expectancy is less than six months. Palliative care is for those with a chronic or advanced illness.

Home oxygen & medical equipment: Professional staff provides oxygen, respiratory, rehabilitation and mobility equipment, specialty beds and other equipment and supplies for home use.

SeniorCare Transitions: Geriatric nurse practitioners and geriatric physicians provide primary care at more than 40 senior campuses.

Allina Medical Transportation

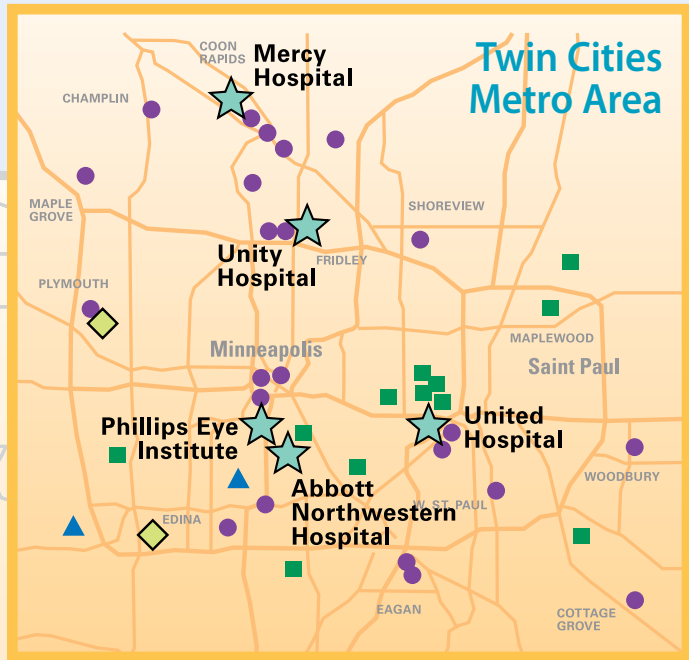
A leader and innovator in pre-hospital emergency medical services, Allina Medical Transportation (AMT) is devoted to providing skilled and compassionate advanced life support, basic life support and scheduled transport in more than 75 Minnesota communities. More than 370 paramedics, emergency medical technicians and dispatchers work together to provide service to an area of approximately 1,000 square miles, reaching more than 750,000 people.

Sister Kenny Rehabilitation Institute

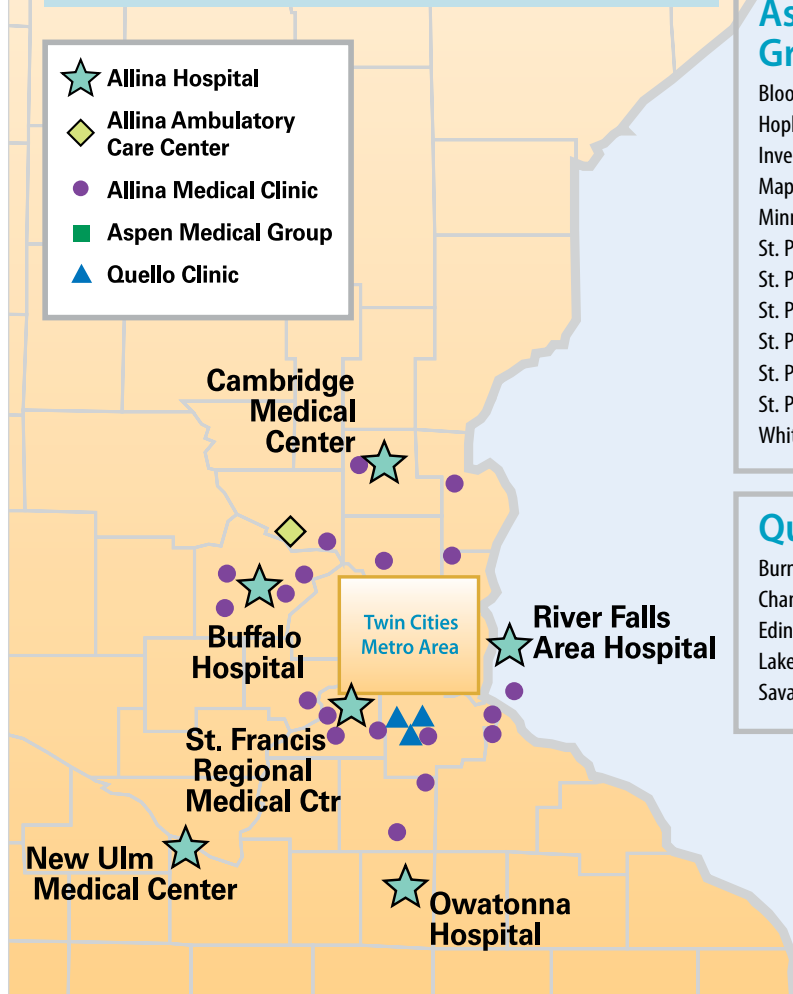
Sister Kenny Rehabilitation Institute, a national leader in rehabilitation, provides care at Abbott Northwestern, United, Mercy, Unity, Buffalo, Cambridge, New Ulm and Owatonna hospitals. Outpatient care is offered at Sister Kenny Sports & Physical Therapy Centers throughout the metro. Sister Kenny treats more than 70,000 patients each year following an injury or illness such as stroke and cancer, spinal cord and brain injuries, as well as orthopedic and sports-related injuries.

Our Values:
*stewardship, trust,
compassion, integrity, respect*

Allina Hospitals & Clinics



- Allina Hospital
- Allina Ambulatory Care Center
- Allina Medical Clinic
- Aspen Medical Group
- Quello Clinic



Allina Hospitals

- Abbott Northwestern Hospital, Minneapolis
- Buffalo Hospital
- Cambridge Medical Center
- Mercy Hospital, Coon Rapids
- New Ulm Medical Center
- Owatonna Hospital
- Phillips Eye Institute, Minneapolis
- River Falls Area Hospital, Wisconsin
- St. Francis Regional Medical Center, Shakopee (jointly owned with Essentia Community Hospitals and Clinics and Park Nicollet Health Services)
- United Hospital, St. Paul
- Unity Hospital, Fridley

Allina Ambulatory Care Centers

- Abbott Northwestern's Center for Outpatient Care, Edina
- Elk Ridge Health, Elk River
- WestHealth Campus, Plymouth (jointly owned with North Memorial Health Care)

Allina Medical Clinic Sites

- Annandale
- Blaine
- Brooklyn Park
- Buffalo
- Cambridge
- Champlin
- Chaska: Crossroads
- Cokato
- Coon Rapids
- Coon Rapids: Midwest Surgery
- Coon Rapids: Women's Health
- Cottage Grove
- Eagan
- Eagan: Parkview OB/GYN

- Edina
- Elk River
- Faribault
- Farmington
- Forest Lake
- Fridley: Bariatric Surgical Specialties
- Fridley: OB/GYN Specialists
- Hastings: First Street
- Hastings: Nininger Road
- Maple Grove
- Minneapolis: Isles
- Minneapolis: Nicollet Mall
- Minneapolis: The Doctors Uptown
- North Branch
- Northfield
- Plymouth: WestHealth Campus
- Prescott
- Prior Lake: Crossroads
- Ramsey
- Richfield: Woodlake
- St. Michael
- St. Paul: Parkview OB/GYN
- St. Paul: United Medical Specialties St. Paul

Aspen Medical Group Sites

- Bloomington
- Hopkins
- Inver Grove Heights
- Maplewood
- Minneapolis: East Lake Street
- St. Paul: Bandana Square Clinic
- St. Paul: Behavioral Health/Atrium
- St. Paul: Digestive Health Center
- St. Paul: Highland Park
- St. Paul: Musculoskeletal Center
- St. Paul: Sleep Center
- White Bear Lake

Quello Clinic Sites

- Burnsville
- Chanhassen
- Edina
- Lakeville
- Savage

- Shakopee
- Shakopee: Crossroads – Dean Lakes
- Shoreview
- West St. Paul
- Woodbury

